



# Alumni Ambassador

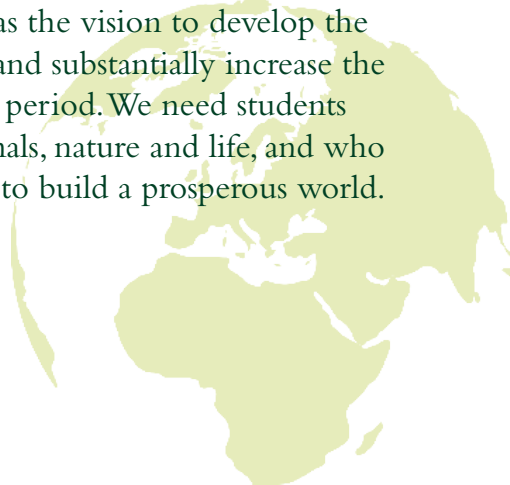
HANDBOOK

# The world needs more SLU students

At SLU, we nourish critical thinking, openness and objectivity, and we produce world-class research. We also give our students the opportunity to make a difference in society. Our knowledge and perspectives are of fundamental importance for sustainable development at all levels.

Close to a billion people worldwide are at risk of starvation and climate change is progressing rapidly. The globally growing population and the extensive use of natural resources are problems for all of us. At SLU, we want to contribute to solving these problems and our commitment to global development issues is considerable.

Students with a degree from SLU are well equipped to face the challenges of today and of the future, locally and globally, and society needs them. SLU, therefore, has the vision to develop the range of degree programmes offered and substantially increase the number of students within a ten-year period. We need students who ask the big questions about animals, nature and life, and who give us the answers we need in order to build a prosperous world.



# What sets SLU apart?

*Key factors to emphasise when speaking  
with prospective students*

## **We are a world-class international university**

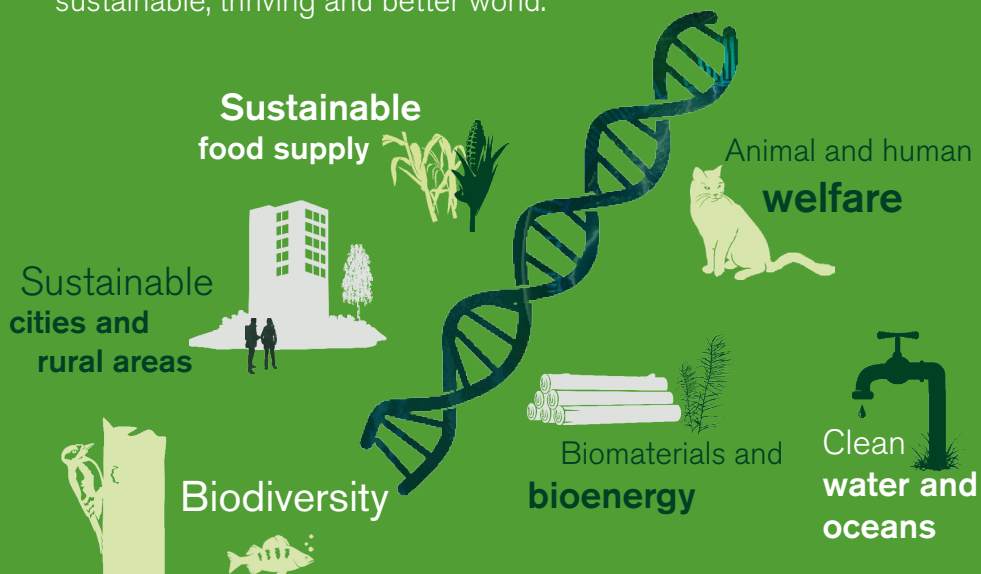
We conduct world-class research in several different areas.

## **We take on fundamental issues that affect all of us**

We focus on the very foundations of our existence: clean water, a living landscape, sustainable food production, high standards of animal welfare, sustainable cities and raw materials that can replace fossil fuels and materials.

## **We make the world a better place**

Our knowledge creates the right conditions for a sustainable, thriving and better world.



## TOP OF THE CROPS

In the **2020 QS World University Rankings**, we are ranked 3rd best university in the world in the fields of agriculture and forestry.

### Center for World University Ranking (CWUR)

Rank by subject 2019:

- 1. forestry
- 5. soil science
- 7. biodiversity
- 7. veterinary sciences

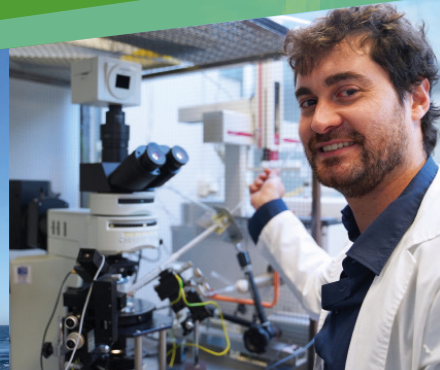
In **Times Higher Education (THE) 2019**, we are ranked as the 36th best young university in the world.

SLU runs the leading environmental monitoring and assessment programmes in Europe, and is world leading in forest inventory methods.

*SLU is one of Sweden's most research-intensive universities, and is responsible for almost one third of all biological research in Sweden.*



*Svea is one of the world's most modern research vessels.*



### Advanced research infrastructure

SLU has an extensive infrastructure available, ranging from field research facilities for animal and plant research to advanced laboratory equipment, biobanks and databases for environmental data. We also coordinate the two national research infrastructures Swedish Lifewatch and Swedish Infrastructure for Ecosystem Science. Last but not least, we run the modern University Animal Hospital with a number of specialists in veterinary medicine.

# Recruitment resources

---



## PROSPECTUS

The international prospectus presents the degree programmes at SLU and describes life as a student here. You can view the prospectus online or order the printed version free of charge.

## DRESS THE PART

We are happy to send you a t-shirt, a lapel pin, or a key chain with SLU's logo.



## PRESENTATIONS

Access the ready-to-use PowerPoint presentation about SLU online, which comes with a script, or download our template to make a custom presentation.







## FILMS

---

Show and tell, by sharing one of the many films about SLU.

We have a variety of informative and inspiring films perfect for sharing on social media, at a fair or in your presentation.

## UNIBUDDY

---

A platform where prospective students can chat with international student ambassadors about their studies and life as a student in Sweden, giving them information from a personal perspective.



## POSTERS

---

Spread the word by putting up posters in universities, libraries or other public spaces where posters are permitted.

We provide customised posters for pre-departure events or fairs.

Find more information and access the resources at  
**[www.slu.se/alumni-ambassadors](http://www.slu.se/alumni-ambassadors)**

# Ways to contribute

- Visit a university or college
- Participate at a pre-departure event
- Represent SLU at a study fair
- Spread the word & share your story



*We are grateful for any and all ways you can contribute to SLU! Let us know if you like to get involved, so we can provide you with support and resources.*

*Contact us at [slualumn@slu.se](mailto:slualumn@slu.se)*

## **VISIT A UNIVERSITY OR COLLEGE**

Are you connected to a university or college with degree programmes on a Bachelor's level that align with Master's programmes at SLU? Take the opportunity to share your SLU experience with prospective students at that university! This is especially good if SLU already has an exchange agreement with that university. Get in touch with us, and we'll provide you with the necessary resources.

## **PRE-DEPARTURE EVENTS**

Pre-departure events held by Swedish embassies are intended to help international students already accepted to degree programmes at Swedish universities, to prepare themselves for living and studying in Sweden.

This is also a great way to help make students more enthusiastic about SLU and increases the chances they will accept their offer of admission.

Less than half of the admitted students actually end up enrolling. Many students receive offers of admission from a number of universities, so it's important to keep promoting SLU until the final decision is made.

Pre-departure events are generally hosted in April and May. The full calendar with more information is available at **[www.studyinsweden.se](http://www.studyinsweden.se)**.

No pre-departure events hosted in your country? Feel free to reach out to the Swedish embassy, as foreign missions can receive funding from the Swedish Institute to host pre-departure events.

## **REPRESENT SLU AT A STUDY FAIR**

All over the world, bigger cities will host a study fair for students who wish to study abroad. SLU usually visits about five of these per year.



# Spread the word

An easy way to get involved is to become a digital ambassador for SLU. Help us spread the word about SLU by sharing your own experience! Follow SLU on social media, and help us reach new audiences by sharing posts, videos and news from SLU. You never know who you might reach.

 @slu.sweden

 linkedin.com/school/slu

 facebook.com/SwedishUniversityOfAgriculturalSciences

## A DAY IN THE LIFE OF AN SLU ALUMNUS

Show current and future students where an SLU education can take you by sharing a snapshot from your work on LinkedIn. Tag your post with @SLU - Swedish University of Agricultural Sciences that has more than 30,000 followers!



# Do

- Be friendly, professional, positive and enthusiastic!
- Check the SLU website regularly to stay up to date.
- Use this handbook, the prospectus and the SLU alumni ambassador website as a resource for answering questions.
- Encourage students to fill in the contact form.
- Contact the SLU alumni staff before attending any recruiting event so that we can provide better support.
- Recognise that it's ok to say, "I don't know." If you don't know the answer to a student's question, offer to get an answer and follow up with the student, or direct them to the appropriate contact listed on the back of this handbook.

# Don't

- Comment on a student's chance of being admitted. Decision-making is the domain of the professional admissions staff and involves many different and complex criteria.
- Make financial aid or scholarship evaluations.
- Answer questions about which you are uncertain. Instead, offer to get an answer and follow-up with the student.
- Make comparisons between institutions, as this does not reflect well on SLU. Speak of SLU's positive opportunities rather than emphasizing on your perceptions of another institution's negative features.

# Frequently Asked Questions

---

## Do I meet the entry requirements?

For admission to Master's programmes and courses, applicants must have been awarded a Bachelor's degree from an internationally recognised university.

Each programme and course has more specific entry requirements that you must also fulfill. See more on the programme pages at [www.slu.se/education](http://www.slu.se/education).

## What about the English language requirements?

You are required to have a good knowledge of written and spoken English.

You can demonstrate that you meet the English language requirements through certain upper secondary (high school) studies, certain university studies, or an internationally approved English test, such as TOEFL or IELTS.

## How do I apply?

You apply to all programmes and courses through the website

[www.universityadmissions.se](http://www.universityadmissions.se), which is a national online application system.

This means that you can apply for several programmes and/or courses at different universities in one application.

## Are there any scholarships?

SLU offers a limited number of scholarships. All students who apply for an SLU Master's programme as their top priority by the 15 January deadline will receive information about how to apply for a full tuition waiver scholarship.

International students in Sweden can also apply for scholarships through the Swedish Institute, which offers over 500 scholarships every year to students and researchers from all over the world. Students can find a comprehensive list of all available scholarships at [www.studyinsweden.se](http://www.studyinsweden.se).

## Do I need to pay a tuition fee?

Tuition fees for non-EU, non-EEA and non-Swiss students vary depending on the programme and course. At SLU, the majority of programmes cost between SEK 85,000 and 260,000 per academic year. Information regarding tuition fee amounts, including the mandatory amount of the first instalment and for the entire course or programme, can be found at [www.slu.se/education](http://www.slu.se/education).

## Where can I live?

SLU will also guarantee all fee-paying students accommodation for the duration of their stay. These students will be provided with a fully furnished dormitory room, which can be located on campus or in the surrounding area. All other students, including non-fee-paying Master's students, are responsible for organising accommodation on their own.

## **Do I need a visa?**

If you are a citizen of a country outside the European Union (EU), European Economic Area (EEA) and Switzerland, you must apply for a visa to study in Sweden. This includes both exchange students and fee-paying students. Visas are organised through the Swedish Migration Agency (Migrationsverket).

If you are a citizen of an EU or EEA country, or Switzerland, you do not need to apply for a visa to study in Sweden. However, you will be required to apply for a residence permit within three months of your arrival in Sweden. This does not include Nordic citizens. Residence permits are also organised through the Swedish Migration Agency.

## **Can I do a free-standing course at SLU?**

If you are interested in studying, but don't want to commit to an entire programme, EU/EEA/Swiss citizens have the option of applying for free-standing courses. Enrolling in a free-standing course will allow you more flexibility in your studies. You can pursue your professional or personal interests and see whether university studies suit your particular needs before committing to entering a degree programme. It may also allow you to study at more than one university simultaneously. In some cases, credits from free-standing courses can be put together towards a degree as well. At SLU, you can find some free-standing courses within most of the university's subject areas, some at Bachelor's level, but most at Master's level.

## **I want to go on an exchange to SLU. Is that possible?**

SLU runs a large number of exchange programmes in cooperation with many leading universities around the world, and receives around 400 exchange students each year.

If you are interested in attending SLU as an exchange student, you are first advised to contact the International Office at your home university. To be admitted as an exchange student, your home university must have a current exchange agreement with SLU. You must also meet the prerequisites of the courses you plan to enrol in at SLU, and meet our English language requirements.

## **Is there a way to connect with current students to ask questions?**

You can connect with a student through Unibuddy. All SLU buddies are current students at one of our Master's programmes. Go to [www.slu.se/unibuddy](http://www.slu.se/unibuddy) to get more information about the buddies, where they come from, spoken languages, their interests and hobbies and which programme they are in. They can answer questions regarding their own programme, the application process and student life, all based on their personal experience. Also, take the opportunity to read their blogs to gain an insight into their lives as students in Sweden and at SLU. There are also several possibilities on Instagram and Facebook: #studysustainably #greenstudies #mastersofnature

**See a comprehensive list of questions and full answers at**  
**[www.slu.se/alumni-ambassadors](http://www.slu.se/alumni-ambassadors)**

# • SLU AT A GLANCE

SLU, the Swedish University of Agricultural Sciences, was founded in 1977 by merging the Agricultural, Forestry and Veterinary Colleges, the School for Forest Management and the Skara Veterinary Institute.

**4000** STUDENTS

**530** PHD STUDENTS

**200** PROFESSORS

**1600** TEACHERS  
AND RESEARCHERS

**3000** FULL-TIME  
EQUIVALENT STAFF

SLU aims  
to be a  
**climate  
neutral**  
university  
by 2027







# EDUCATION

---

SLU offers the following programmes in English:

## **MASTER**

### **Forest sciences**

- Euroforester
- Forest Ecology and Sustainable Management
- Management of Fish and Wildlife Populations
- Plant Biology for Sustainable Production

### **Natural resources and agricultural sciences**

- Agricultural Economics and Management
- Agricultural Food and Environmental Policy Analysis
- EnvEuro
- Environmental Communication and Management
- Environmental Economics and Management
- Landscape Architecture for Sustainable Urbanisation
- Plant Biology for Sustainable Production
- Rural Development and Natural Resource Management
- Soil, Water and Environment
- Sustainable Development
- Sustainable Food Systems

### **Veterinary medicine and animal sciences**

- Animal Science

### **Landscape architecture, horticulture and crop production science**

- Agroecology
- Food and Landscape
- Horticultural Science
- Landscape Architecture
- Landscape Architecture for Sustainable Urbanisation
- Outdoor Environments for Health and Wellbeing

## **BACHELOR**

### **Forest sciences**

- Forest and Landscape

# Admission timeline

(Non-EU/EEA students)



OCTOBER-NOVEMBER  
EDUCATION FAIRS  
& WEBINARS



OCTOBER  
Online application service opens



JANUARY  
Application  
deadline

FEBRUARY  
Application fee & supporting  
documentation deadline



APRIL  
Admission notification  
Apply for a residence permit with  
Swedish Migration Agency  
(Migrationsverket)

A prospective student from  
your country may contact  
you during this period

APRIL - MAY  
PRE-DEPARTURE EVENTS



SEPTEMBER  
Autumn semester starts

See the specific dates, current fairs and pre-departure events at [www.slu.se/alumni-ambassadors](http://www.slu.se/alumni-ambassadors)

# Get in touch

## Student Recruitment

[study@slu.se](mailto:study@slu.se)

## Admissions Office

*Application and admission to programmes or courses at SLU, tuition fees, etc.*

[admissions@slu.se](mailto:admissions@slu.se)

## Study and Career guidance

*Which education suits you? How to reach your future goals?*

*Courses and programmes offered, your study environment, career after graduation, etc.*

[studyguidance@slu.se](mailto:studyguidance@slu.se)

## Study with disabilities

[ability@slu.se](mailto:ability@slu.se)

## Go on exchange

[mobility@slu.se](mailto:mobility@slu.se)

## SLU Alumni

[slualumn@slu.se](mailto:slualumn@slu.se)