

Information on forests - sound and comprehensive

Potential MS contributions to a forest information system for the EU

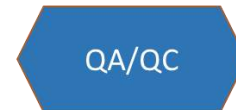
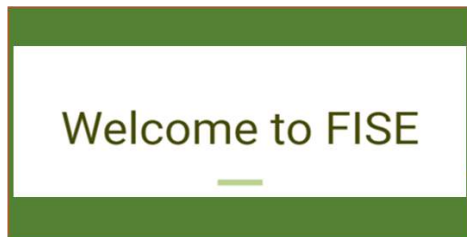
Klemens Schadauer – ENFIN Chair
BFW - Department of Forest Inventory
Austria

Workshop towards harmonised forest
monitoring and reporting for the EU

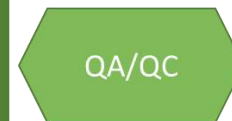
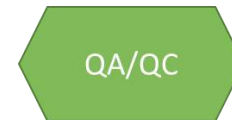
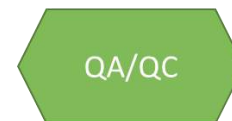
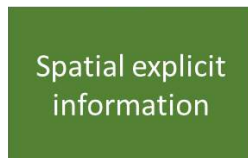
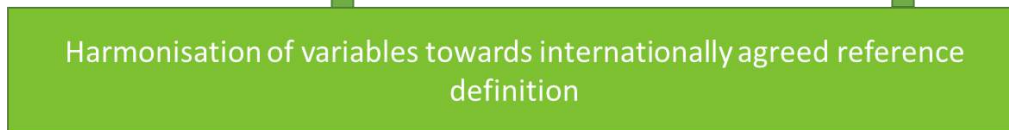
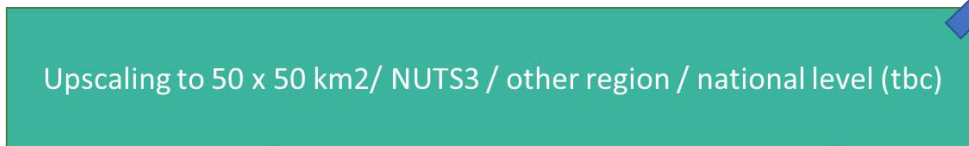
Uppsala 1–2 Feb 2023

Information System proposed by EEA

EUROPEAN LEVEL



MEMBER COUNTRIES



NFIs in Europe - ENFIN

European National Forest Inventory Network (ENFIN). The members supply forest data and information at national and sub-national levels for up to 100 years.



Strong Expertise

NFIs within EU

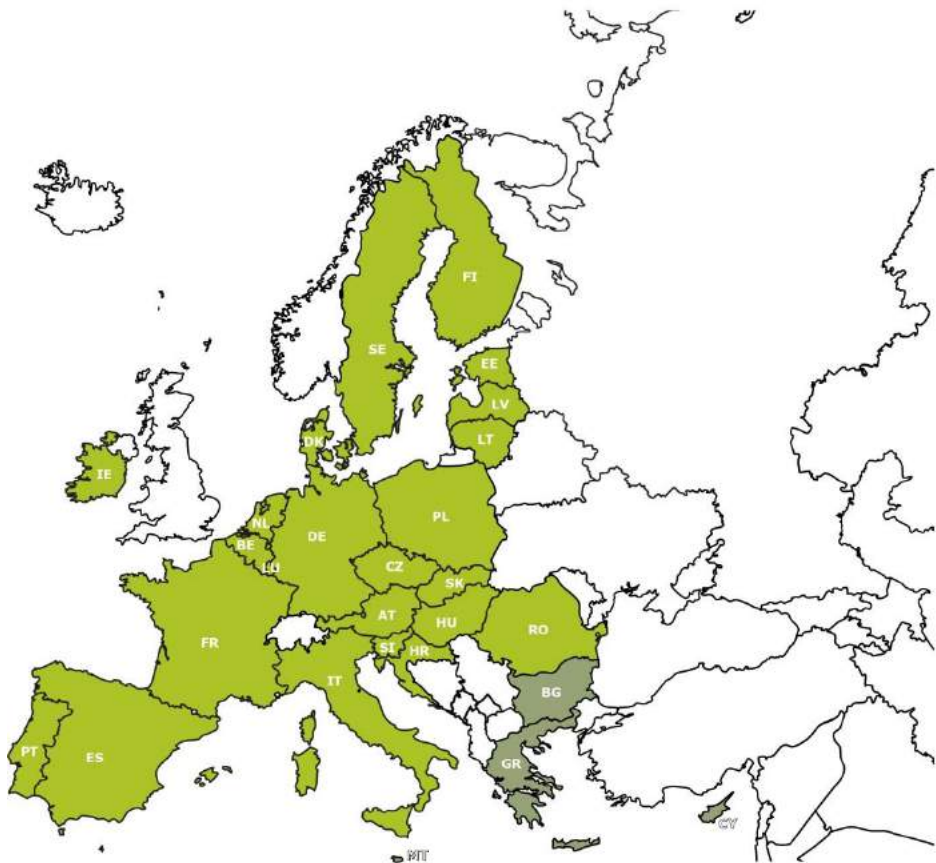
Covering 95% of the EU forest area
Covering 97% of the EU growing stock

Established
sample based NFIs



NFIs within EU

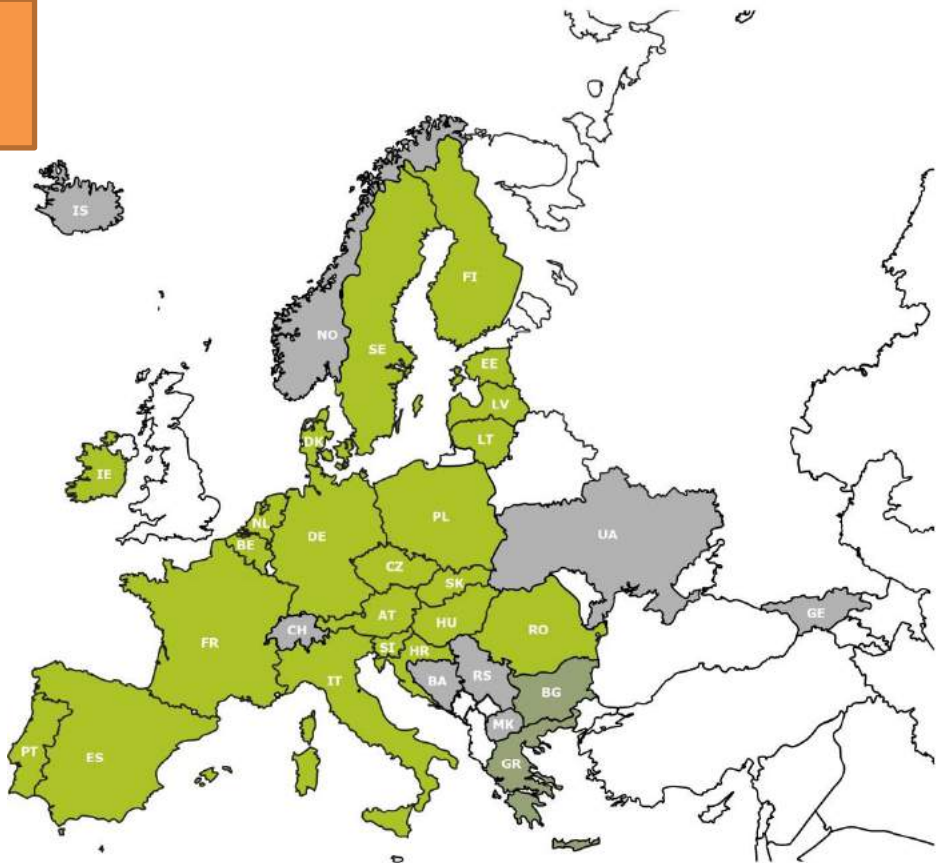
- Established sample based NFIs
- Other forest information



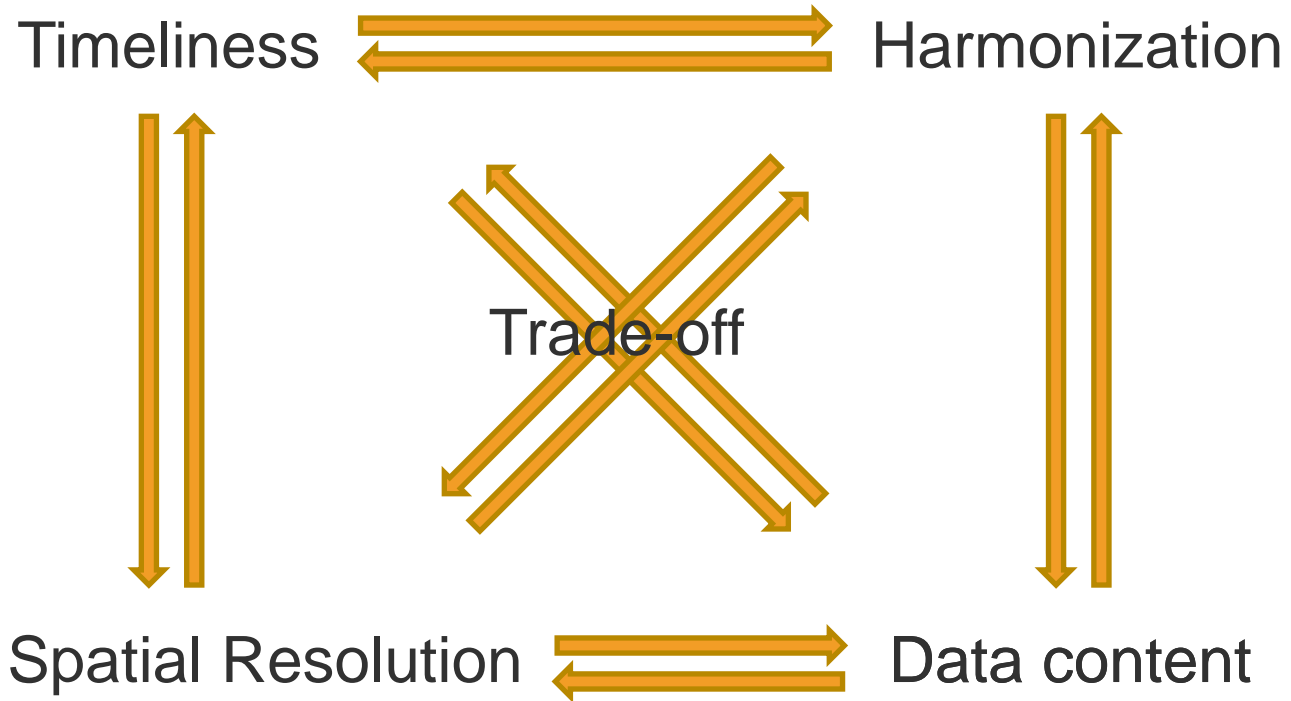
NFIs in Europe - ENFIN

Brings together 31
European countries

- Established sample based NFIs
- Other forest information
- Additional ENFIN Members



What is relevant for a European system?



Possible ways of working

Timeliness



Harmonization



Definitions
Tree level
Plot level
Cluster level
...
Result level
...
Information level

Trade-off

Possible ways of working

Timeliness



Harmonization



Right Balance

Harmonization status

Work done

- Forest Area with Forest Available for Wood Supply:
SCs with JRC <https://doi.org/10.1016/j.forpol.2019.102032>
- Above Ground Biomass:
SCs with JRC: reports, publication about mapping
DOI: [10.2760/311876](https://doi.org/10.2760/311876)
- Growing stock and Stem Volume:
H2020-Diablo: <https://doi.org/10.1016/j.foreco.2021.119868>,
doi.org/10.1007/s13595-019-0800-8
- Increment:
SCs with JRC: reports, publication just starting

Harmonization is often more timely than Standardization

Harmonization status

Next one could be

➤ Harvest

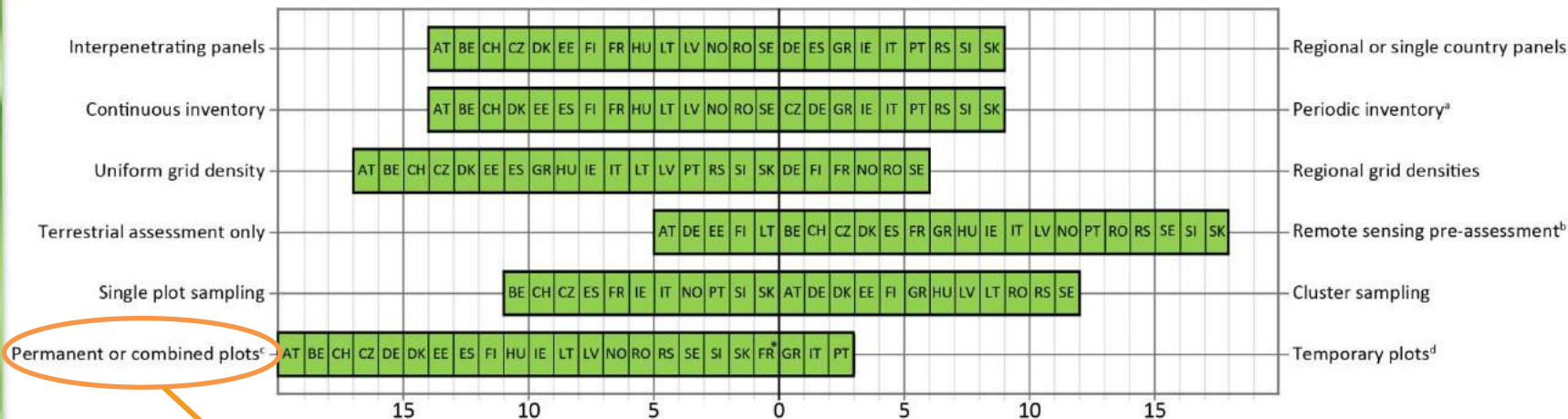


Harmonization status

Next one could be

➤ Harvest

Study on the Sampling Design



➤ Needed for sound and sample based estimates of harvests

➤ 89% of the Forest Area

➤ 93% of Growing Stock

Gschwanter et al. 2022:

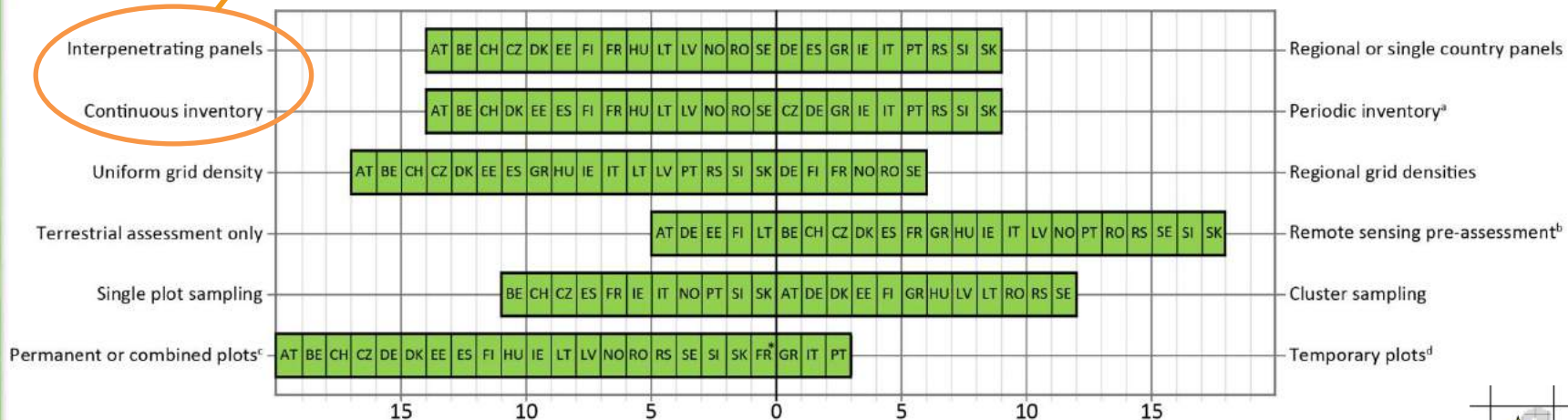
<https://doi.org/10.1016/j.foreco.2021.119868>

Possible ways of towards Timeliness

- Annual estimates for a set of indicators based on statistical design of the sample plots

Needed for annual estimates

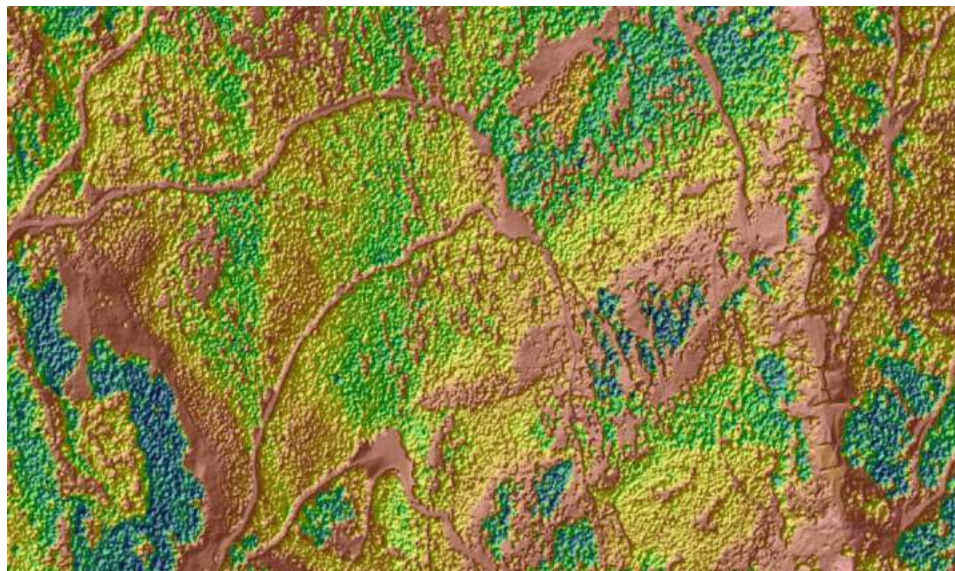
- 65% of the forest area
- 66% of the growing stock



Possible ways of towards Timeliness

- Improved timeliness for reporting a set of indicators based on updating field plots with remote sensing and/or growth models

Time 1

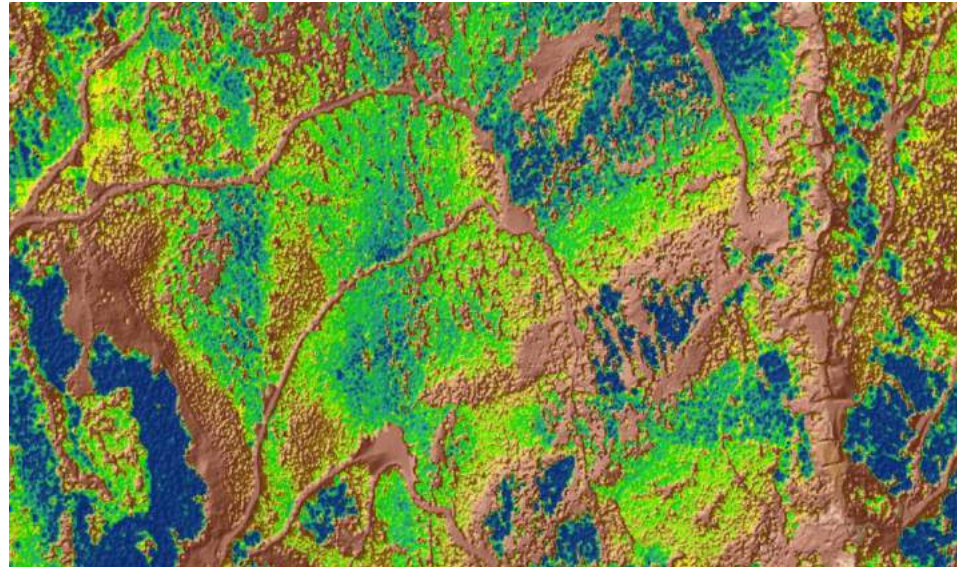
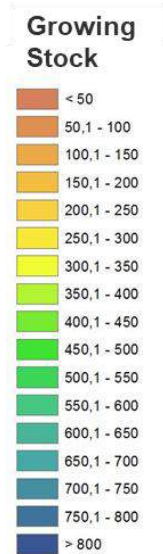


QA/QC

Possible ways of towards Timeliness

- Improved timeliness for reporting a set of indicators based on updating field plots with remote sensing and/or growth models

Time 2



QA/QC

National Sentinel 2 application

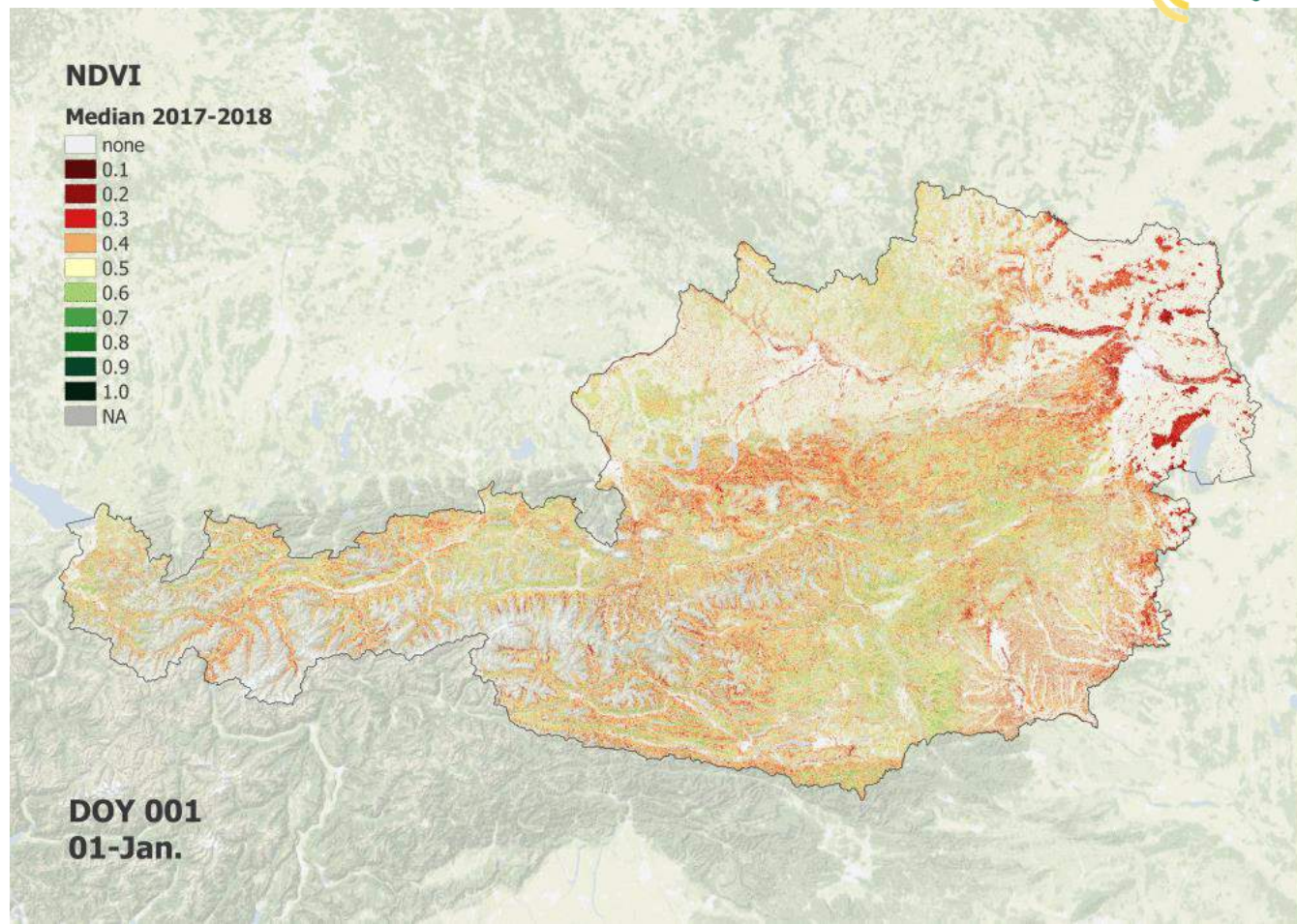


Phenology
Model

Used for:

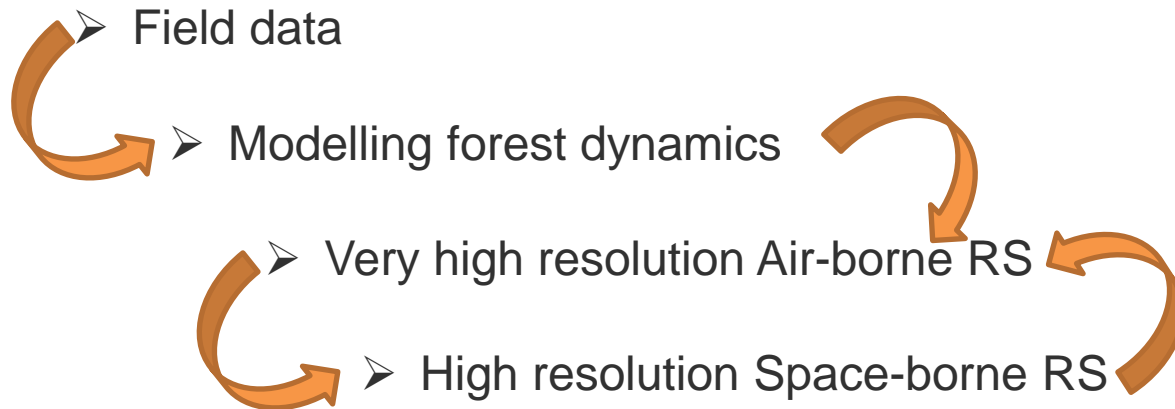
Harvest and
Disturbance
mapping

QA/QC

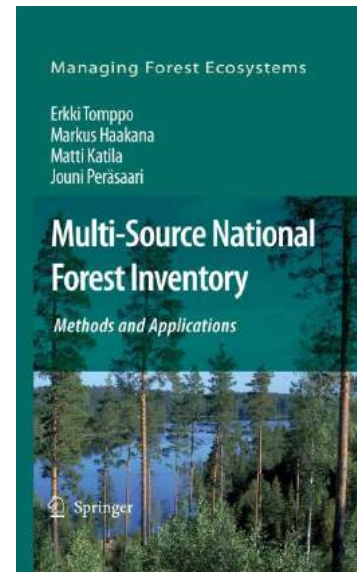


Towards integration

Countries are developing integrated systems

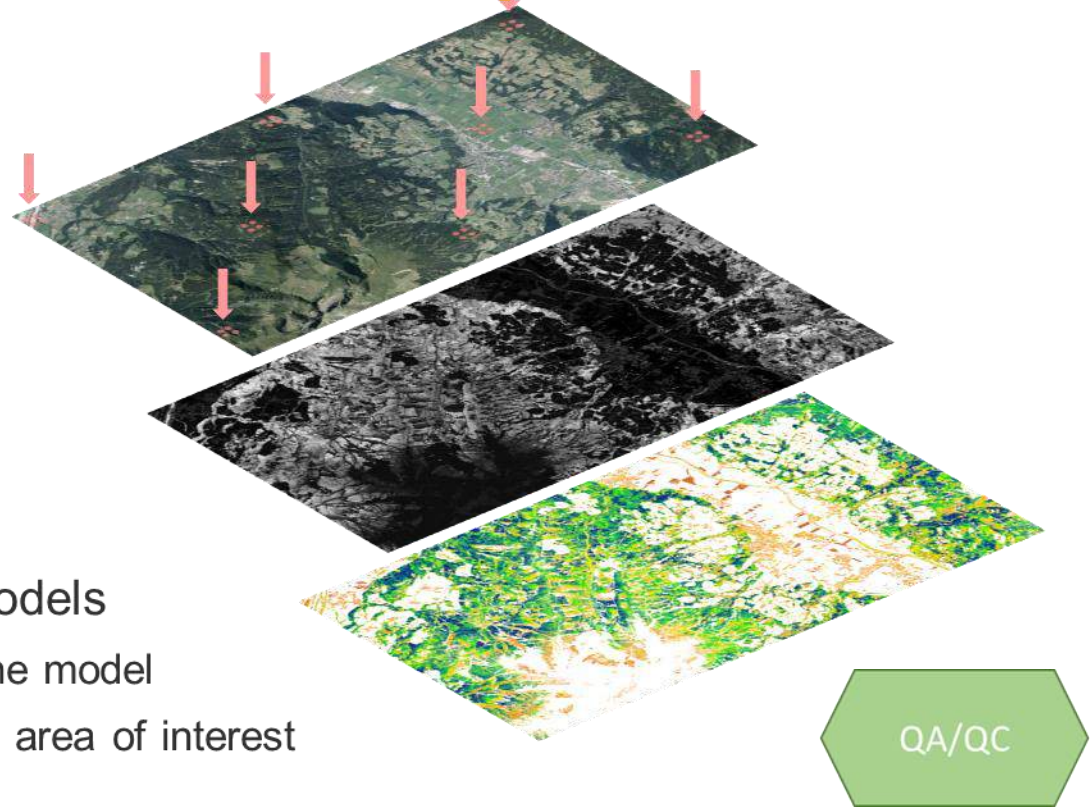


Tomppo et al. (2008):



Towards integration in Europe

- Field plots
- Remote sensing
- Combining with models
 - Application of the model
 - Estimate for the area of interest
 - Mapping



Pathfinder

e-Forest

n-Fiesta

Recent development for NFI field sampling

Terrestrial Laser

- deep-learning based single tree segmentation,
- measure their properties (DBH, tree species, height, crown/branch properties,...)

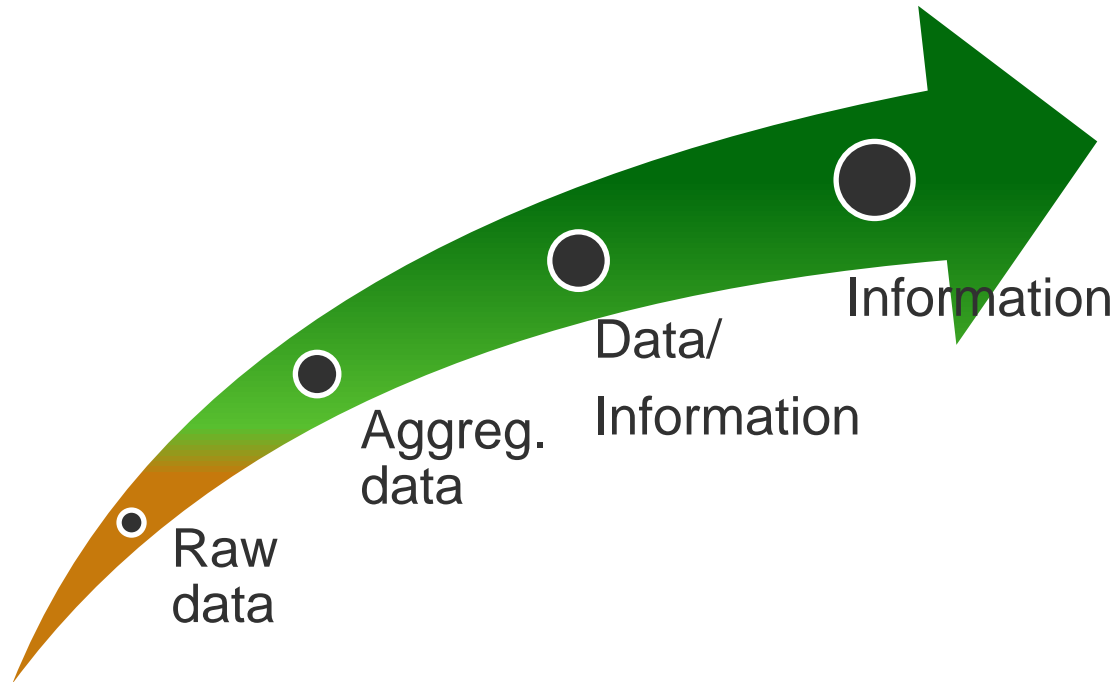


Pathfinder



Reorganising the Network

- ENFIN is working on formalizing and strengthening its structures including the establishment of a permanent ENFIN office in order to enhance the provision of forest monitoring information



Summarize

NFIs are no data delivering machines

- Backbone of the forest statistical information system
- Use the NFI expertise for:
 - Statistical estimation
 - Integration of field and remote sensed data
 - Harmonization
 - Capacity building to fill gaps on the European map

Summarize

Member States

European Commission



Finding the balance

Summarize

Member States



European Commission



Mutual Trust



European National Forest Inventory Network

Thank you very much!

Information on forests - sound and comprehensive

For more information please visit **ENFIN.info**



National Forest Inventories (NFIs) represent comprehensive, reliable, large-scale monitoring systems. ENFIN serves as a European network to promote NFIs, harmonise forest information and support decision makers in a broad range of forest related policies.

The overall objectives of ENFIN are to

- provide a platform for the harmonisation of forest inventory information at European scale
- optimise synergies between NFIs and promote new knowledge and enhanced methods
- support forest policies with harmonised forest information and adapt data collection to new emerging policy needs.