



BIOGEOMON 2026 Field Excursion Information Sheet

Peatland **Bus 1 A and B** – Guiding Schedule

Departure: 08:30 from Central Station, Umeå

Return: 16:50 to Central Station, Umeå

Practical Information

- Please arrive at the departure point at least 10 minutes early and register with volunteers
- Wear waterproof footwear and weather-appropriate clothing.
- Bring water, sunscreen, and insect repellent.
- Lunch will be provided.
- Mobile coverage may be limited at some field sites.
- Please stay with your assigned group throughout the excursion.
- Volunteers should be ready at their station at least 5 minutes before arrival.

Bus No	Start	End	Location/Activity	Notes
Bus1A	08:30	09:40	Bus to Degerö	
Bus1A	09:45	10:00	Fika	
Bus1A	10:00	10:10	Flakastugan/History of Kulbäcksliden försökspark	Mats B Nilsson
Bus1A	10:25	10:35	Degerö hut/Intro to Degerö mire research	Mats B Nilsson
Bus1A	10:40	10:48	SITES Spectral monitoring	Eric Larmanou
Bus1A	10:50	10:58	ICOS ecosystem station	Per Marklund
Bus1A	11:00	11:08	Autochambers	Antonia Hartmann
Bus1A	11:10	11:18	Kulbäcksliden Research Infrastructure (KRI)	Koffi Dodji Noumonvi
Bus1A	11:20	11:28	Long-term fertilization experiment	Pernilla Löfvenius
Bus1A	11:30	11:38	Frost manipulation experiment	Pernilla Löfvenius
Bus1A	12:00	12:55	Lunch at Flakastugan	
Bus1A	13:00	13:40	Bus to Trollberget	
Bus1A	13:45	13:55	Intro to Trollberget Experimental Area (TEA)	Elisabet Andersson
Bus1A	14:10	14:18	Transect 3/Methylmercury	Karin Eklöf
Bus1A	14:20	14:28	Transect 4/Spatial GHG fluxes (chambers)	Alexander Pinkwart
Bus1A	14:30	14:38	Platform/Ecosystem-scale GHG fluxes (EC)	Järvi Järveoja
Bus1A	14:40	14:48	EC tower instrumentation	Joshua Ratcliffe
Bus1A	14:50	14:58	Transect 2/Biodiversity	Pierre Tichit
Bus1A	15:00	15:08	Weir R2/Hydrology and water quality	Virginia Mosquera
Bus1A	15:25	15:45	Fika	
Bus1A	15:45	16:50	Bus to Umeå	



Bus No	Start	End	Location/Activity	Notes
Bus1B	08:30	09:40	Bus to Degerö	
Bus1B	09:45	10:00	Fika	
Bus1B	10:00	10:10	Flakastugan/History of Kulbäcksliden försökspark	Mats B Nilsson
Bus1B	10:25	10:35	Degerö hut/Intro to Degerö mire research	Mats B Nilsson
Bus1B	10:40	10:48	Long-term fertilization experiment	Pernilla Löfvenius
Bus1B	10:50	10:58	Frost manipulation experiment	Pernilla Löfvenius
Bus1B	11:00	11:08	SITES Spectral monitoring	Eric Larmanou
Bus1B	11:10	11:18	ICOS ecosystem station	Per Marklund
Bus1B	11:20	11:28	Autochambers	Antonia Hartmann
Bus1B	11:30	11:38	Kulbäcksliden Research Infrastructure (KRI)	Koffi Dodji Noumonvi
Bus1B	12:00	12:55	Lunch at Flakastugan	
Bus1B	13:00	13:40	Bus to Trollberget	
Bus1B	13:45	13:55	Intro to Trollberget Experimental Area (TEA)	Elisabet Andersson
Bus1B	14:10	14:18	Weir R2/Hydrology and water quality	Virginia Mosquera
Bus1B	14:20	14:28	Transect 2/Biodiversity	Pierre Tichit
Bus1B	14:30	14:38	Transect 3/Methylmercury	Karin Eklöf
Bus1B	14:40	14:48	Transect 4/Spatial GHG fluxes (chambers)	Alexander Pinkwart
Bus1B	14:50	14:58	Platform/Ecosystem-scale GHG fluxes (EC)	Järvi Järveoja
Bus1B	15:00	15:08	EC tower instrumentation	Joshua Ratcliffe
Bus1B	15:25	15:45	Fika	
Bus1B	15:45	16:50	Bus to Umeå	

Group Organization

- Each bus carries approximately **50 participants**.
- Participants will be divided into colour coded groups:
 - **Group A** (25 participants) (Volunteer Guide **Grzegorz Gorczynski**)
 - **Group B** (25 participants) (Volunteer Guide **Thea Norstedt**)
- Each group will be guided by a volunteer throughout the excursion who will assign your colour when you register before entering the bus
- Please remain with your assigned group during the day to reduce clustering at field sites.



Peatland excursion

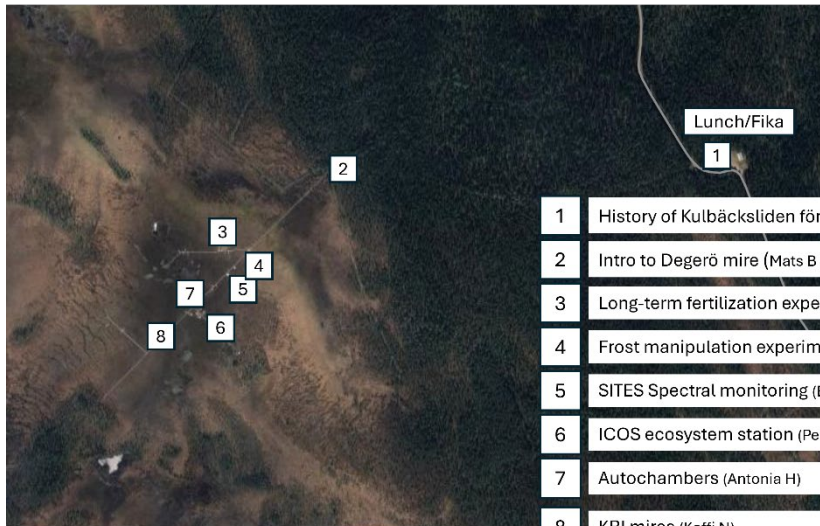
Degerö (64.184467, 19.578420)

[See detailed schedule for more info](#)

Järvi Järveoja: +46(0)72 454 4860

Bus1
Arrives
9.40

Bus2
Arrives
12.15



- 1 Lunch/Fika
- 1 History of Kulbäcksliden försökspark (Mats B Nilsson)
- 2 Intro to Degerö mire (Mats B Nilsson)
- 3 Long-term fertilization experiment (Pernilla L)
- 4 Frost manipulation experiment (Pernilla L)
- 5 SITES Spectral monitoring (Eric L)
- 6 ICOS ecosystem station (Per M)
- 7 Autochambers (Antonia H)
- 8 KRI mires (Koffi N)

Peatland excursion

Trollberget (64.178445, 19.855247)

[See detailed schedule for more info](#)

Järvi Järveoja: +46(0)72 454 4860

Bus2
Arrives
9.30

Bus1
Arrives
13.40



- 1 Fika
- 1 Intro to TEA (Elisabet A)
- 2 Weir R2/Hydrology & water quality (Virginia M)
- 3 Transect 2/Biodiversity (Pierre T)
- 4 Transect 3/Methylmercury (Karin E)
- 5 Transect 4/Spatial GHG fluxes (chambers) (Alexander P)
- 6 Platform/Ecosystem-scale GHG fluxes (EC) (Järvi J)
- 7 EC tower instrumentation (Joshua R)



Contacts

Role	Contact
Excursion coordination	[Järvi Järveoja +46724544860]
Bus coordination	[Maria Nordstrom +46907868217, +46702087626]
Emergency contact	[Måns +46705906388]

For more information contact biogeomon2026@slu.se

