




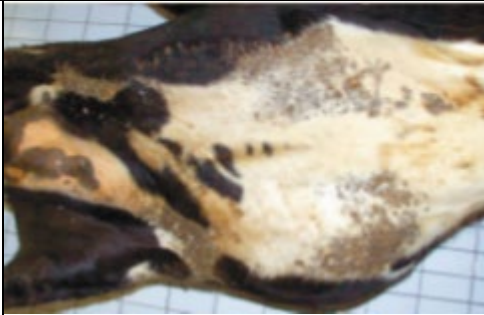






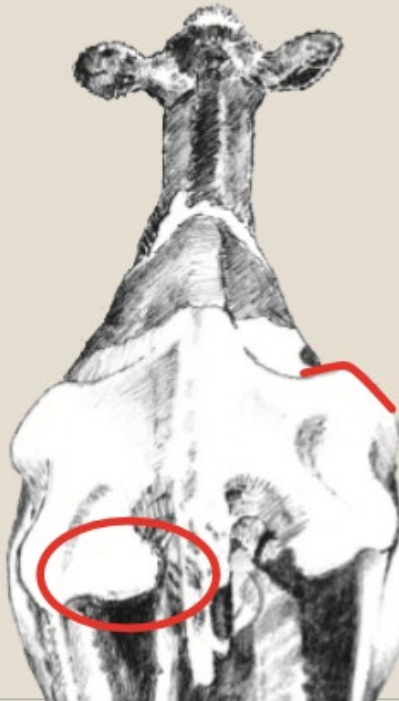
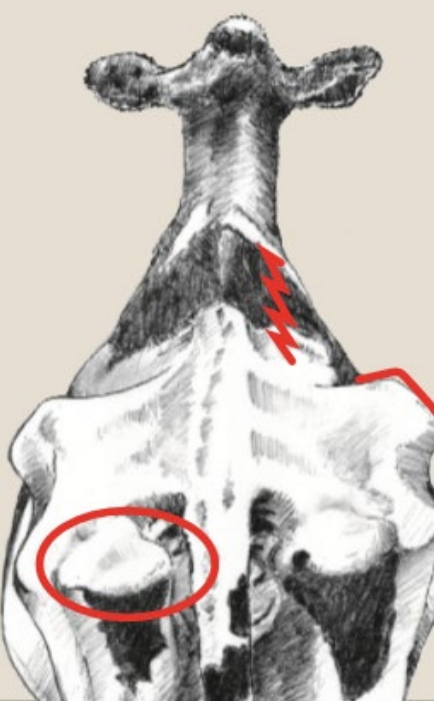
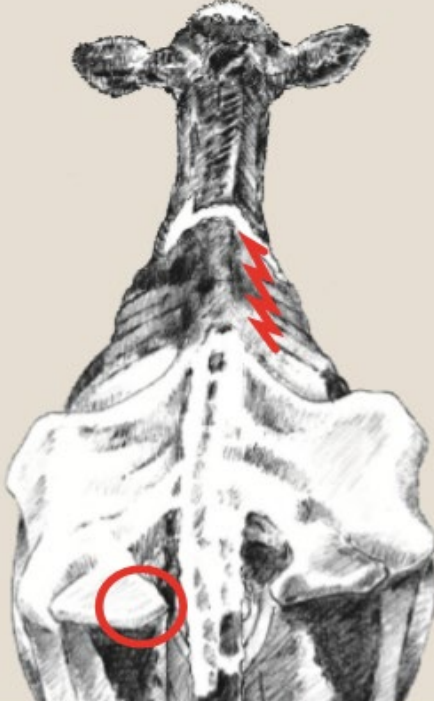


Cattle

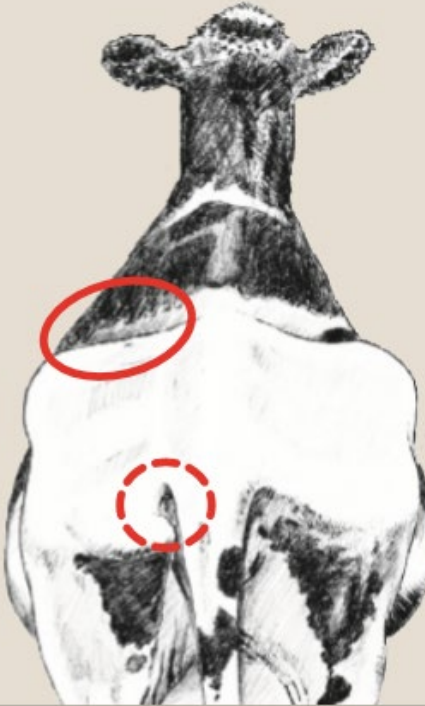
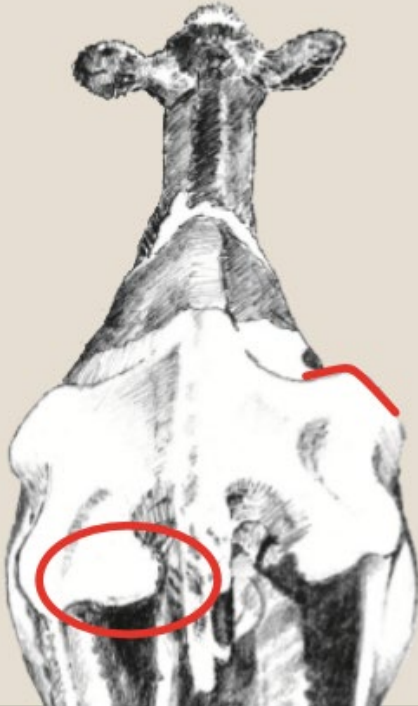
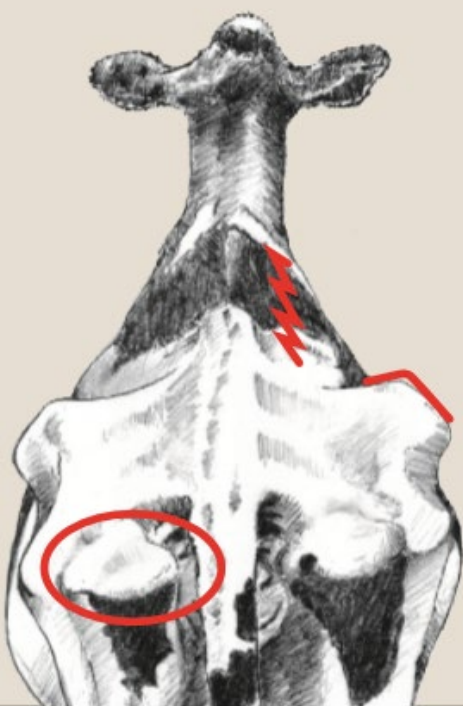
Cleanliness

Clean	Minor		
No dirt or only minor fresh or dried superficial dirt that can be brushed away	An area of superficial or fresh dirtiness larger than the palm of a hand, that can be brushed away or removed easily	An area of dirtiness larger than a forearm, with plaque or layers in contact with the skin that are smaller than the palm of a hand. No or minor (smaller than the palm of a hand) redness in the skin. No skin erosion.	An area of dirtiness as layers or plaques in contact with the skin to at least forearm long in any dimension. Plaques cannot be removed without pain. Redness of skin that is larger than the palm of a hand. Skin erosion under dirt of all sizes.
			
			
			

Body condition score BCS

Dairy cattle	Acceptable	Needing attention	
	Hooks angular. More prominent padding on pins.	Pins and hooks angular. Fat pad slightly palpable on point of pins.	No fat pad on pins. Visible corrugations halfway between tip and spine of short rib.
			

Modified 5-point body
condition scoring system
from Elanco animal health
©2009

Beef cattle			
	Sacral ligament visible. Tailhead ligament barely visible.	Hooks angular. More prominent padding on pins.	Pins and hooks angular. Fat pad slightly palpable on point of pins.
			

Modified 5-point body
condition scoring system
from Elanco animal health
©2009

Lameness

Standing

1 Acceptable

Stands and walks normally with a straight back. Makes long confident strides.



Walking

2 Acceptable

Stands with flat back, but arches when walks. Gait is slightly abnormal.



3 Needing attention

Stands and walks with an arched back and short strides with one or more legs.

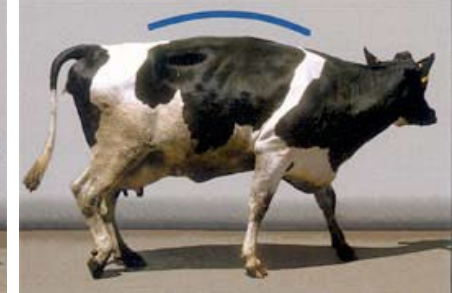
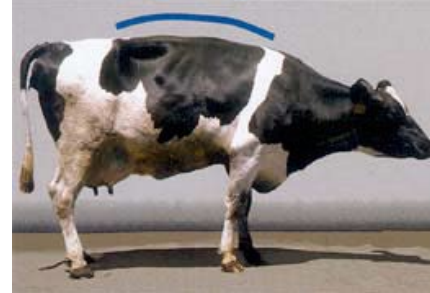


Standing

4 Unacceptable

Arched back standing and walking.

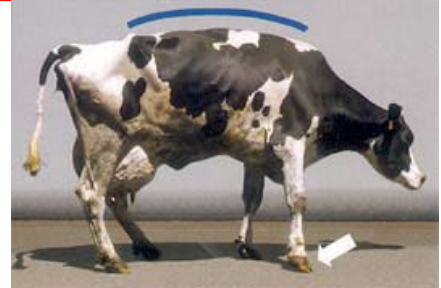
Favoring one or more limbs but can still bear some weight on them.



5 Unacceptable




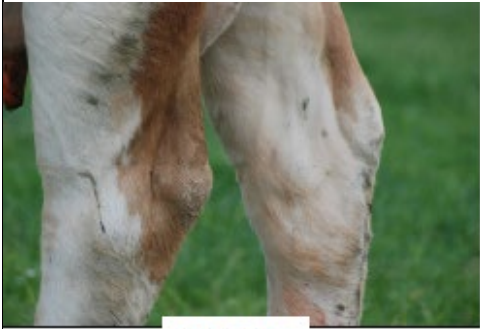

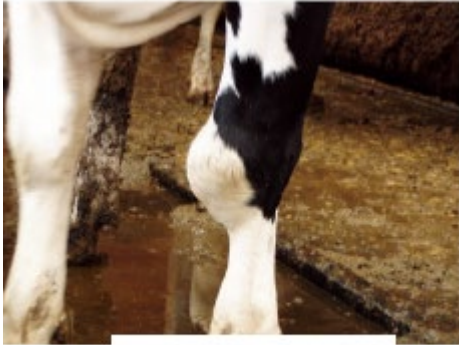
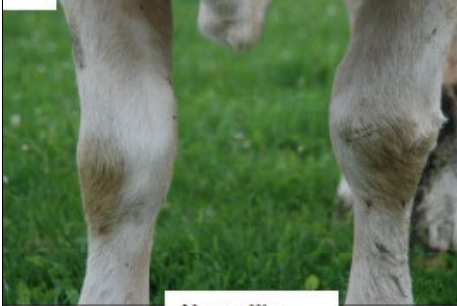


Pronounced arching of back.

Reluctant to move, with almost complete weight transfer off the affected limb.



This scoring system is developed by Zinpro Corporation based on Spencher, D.J.; Hostetler, D.E.; Kaneene, J.B. 1997. Theriogenology 47: 1178-1187

Lesions and injuries

Acceptable	Needing attention	Not acceptable
No lesions and/or swelling in any part of the body	Mild lesions and or swellings in any part of the body. <ul style="list-style-type: none"> • Small reddish lesions/hairless patches, not infected • Swelling in hocks or knees less than about 8 cm in diameter, not infected 	Severe lesions and/or swellings in any part of the body. <ul style="list-style-type: none"> • Reddish lesions (damaged skin in form of the scab or wound), infected • Swellings in hocks or knees greater than about 8 cm in diameter or bleeding/infected
 <p>No hairless patch © Winckler BOKU</p>	 <p>Hairless patch (tarsal joint) © Brinkmann BOKU</p>	 <p>Lesion (tarsal joint) © Brinkmann BOKU</p>
 <p>No lesion © Winckler BOKU</p>	 <p>Hairless patch (carpel joint) © Brinkmann BOKU</p>	 <p>Swelling (carpel joint) © Brinkmann BOKU</p>
 <p>No swelling © Winckler BOKU</p>	 <p>Severe lesion</p>	 <p>Severe lesion</p>
<p>https://grandin.com/dairy.cow.photo.charts.ht</p>		
		Photo: Birgitta Staaf Larsson

The photos taken in BOKU are from the WQ assessment protocol for cattle