

# SLU's responsibilities as an official statistical authority

The Swedish University of Agricultural Sciences (SLU) is responsible for supplying statistics about the status and change in Sweden's forests.

There is a distinction in Sweden between official statistics and other public statistics. Official statistics are statistics that are produced according to the statistical act and ordinance and published as required by official regulations.

The Official Statistics Act states that official statistics are statistics for public information, planning and research purposes in specified areas produced by appointed public authorities in accordance with the provisions issued by the Government.

Official statistics shall be objective and made available, free of charge, to the public. Further, they are to be produced and published in a manner that protects the privacy of individuals. All authorities responsible for official statistics should each year provide an updated description for every product for which they are responsible.

## CONTACT THE SWEDISH NATIONAL FOREST INVENTORY

Per Nilsson (Head of analysis)  
090-786 8472  
per.nilsson@slu.se

Web address  
[www.slu.se/nfi](http://www.slu.se/nfi)  
[www.slu.se](http://www.slu.se)

Postal address  
SLU, Swedish National Forest Inventory  
901 83 Umeå, Sweden



Photo: N Cory, SLU



Swedish National  
**Forest Inventory**

Photo cover: O Borin, SLU

# Forest status and change



# The Swedish National Forest Inventory supplies official statistics about status and change in Sweden's forests.

Official statistics differ from other statistics in that they are produced in accordance with the official statistics act. Official statistics are freely available for public information, planning and research purposes. Furthermore, official statistics are objective and quality controlled in accordance with the guidelines and criteria specified by the Council for Official Statistics. Statistics bearing the official statistics logo are guaranteed to be both objective and trustworthy.

## RESPONSIBILITY

The Swedish University of Agricultural Sciences (SLU) as an authority responsible for official statistics is required to document, quality control and make available free of charge the statistics for which they are entrusted with responsibility.



Photo: Å Brunh, SLU

The official statistics supplied by SLU are freely available in electronic form via SLU's homepage and in the form of published volumes available through public and university

libraries and also via Statistics Sweden's own publication library. SLU determines the scope of the statistics unless specific parliamentary decisions state otherwise.

## PRODUCTION

The official statistics regarding status and change of Sweden's forests are produced by the Swedish National Forest Inventory based at the Department of Forest Resources, SLU in Umeå. The statistics describe both current status and changes in Sweden's forests. The statistics are used, for example, as a basis for forestry, energy and environmental policy in Sweden.

The Swedish National Forest Inventory has supplied statistics of this kind since 1923. The statistics are based on an annual national inventory of all land types. The data collected is refined to give up-to-date and quality controlled statistics. The methods used, both measurements and statistical design, are well documented in scientific literature.

Data collection is undertaken through a random sample inventory with both permanent and temporary sample plots. New temporary sample plots are laid out each year whereas permanent sample plots are revisited every fifth year. Every year circa 12 000

sample plots are studied, approximately half of these are for productive forest land.

## SERVICES

SLU, via the Swedish National Forest Inventory, provides the following statistical products:

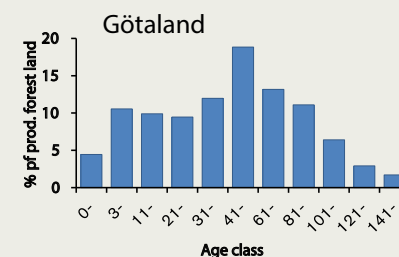
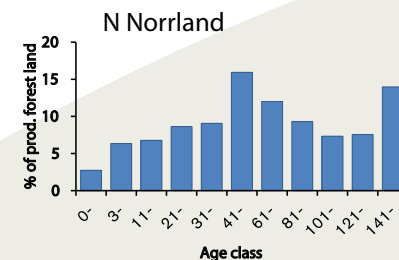
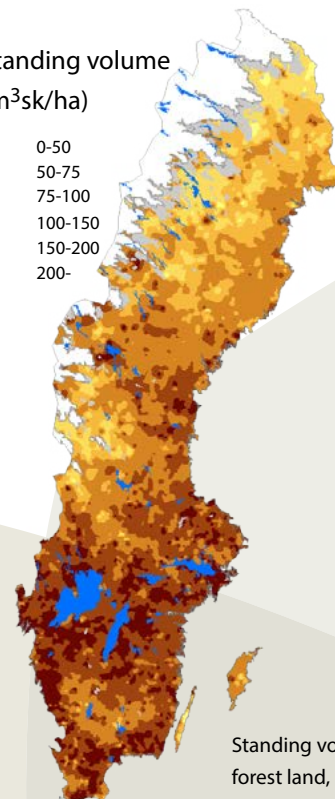
- Area conditions
- Standing volume and tree biomass
- Annual volume increment
- Vegetation and site conditions
- Forest damage

These statistics are published annually in the Skogsdata series. This publication is available both electronically and in printed form via the Swedish National Forest Inventory's home page:

[www.slu.se/nfi](http://www.slu.se/nfi)

Standing volume  
(m<sup>3</sup>sk/ha)

0-50  
50-75  
75-100  
100-150  
150-200  
200-



Standing volume and age distribution for productive forest land, 2010-2014. Source: The Swedish National Forest Inventory. Official Statistics of Sweden



Photo: O Borin (1-3) & N Cory (4), SLU