



SCIENCE AND EDUCATION
FOR SUSTAINABLE LIFE

SLU + Swedish Environmental Objectives
=
Environmental Assessment +SDG

Kevin Bishop, vicerektor



SCIENCE AND
EDUCATION **FOR**
SUSTAINABLE
LIFE



For a thriving world



Solving real problems

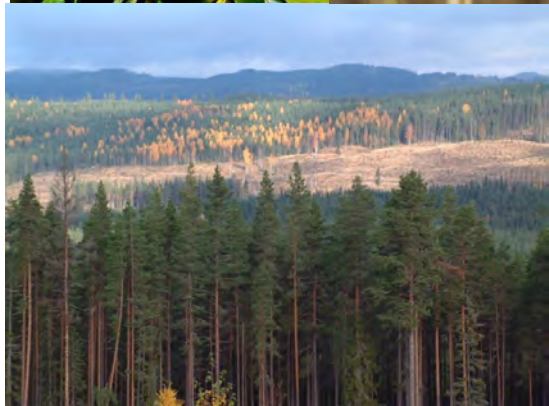


Putting science to the test

Mission statement:

SLU develops the understanding and sustainable use and management of biological natural resources.

This is achieved by research, education and environmental monitoring and assessment, in collaboration with the surrounding community.



Vision: SLU is a world class university in life sciences and environmental sciences.

Rankinglista	Rank baseras på	SLU:s placering
Times Higher Education 2016-2017	Samverkan, publicering, citeringar, lärartäthet, internationalisering	Universities <50 yrs: 26 Small universities: 9 (<5000 students)
QS ranking 2017	Baserad på "academic reputation, employer reputation, citations per paper, h-index"	Agriculture & Forestry: 4
Center for World University Rankings 2017	Bibliometri	Forestry: 1 Soil Science: 5 Biodiversity Conserv: 7 Veterinary Sciences: 7

SLU in the Swedish University Landscape

Environmental
Assessment



Environmental Assessment seeks a balance between use and protection



Environmental Assessment provides decision support for a sustainable future

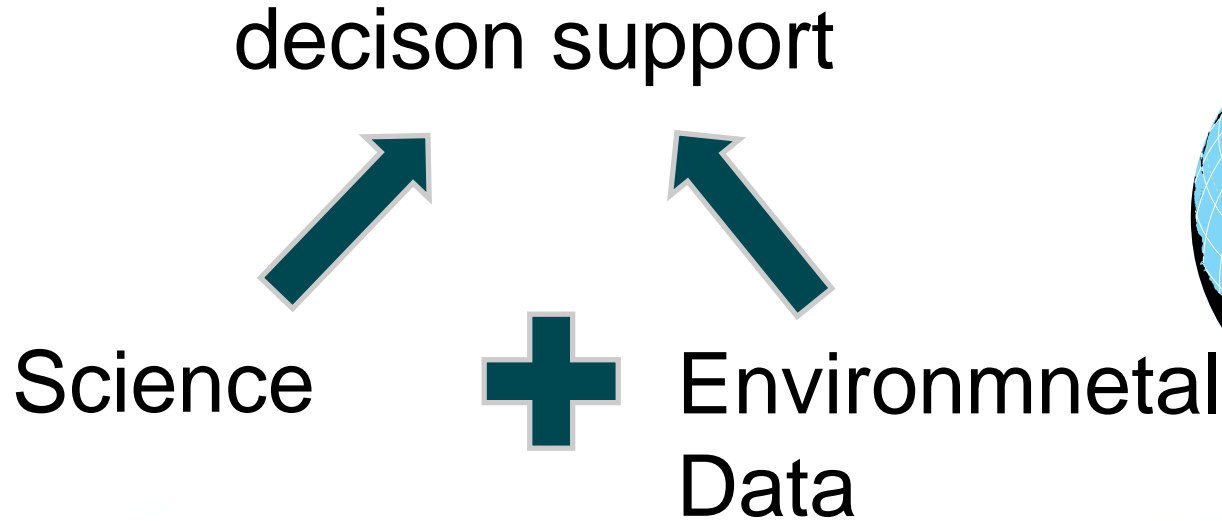


Illustration: Fredrik Saarkoppel

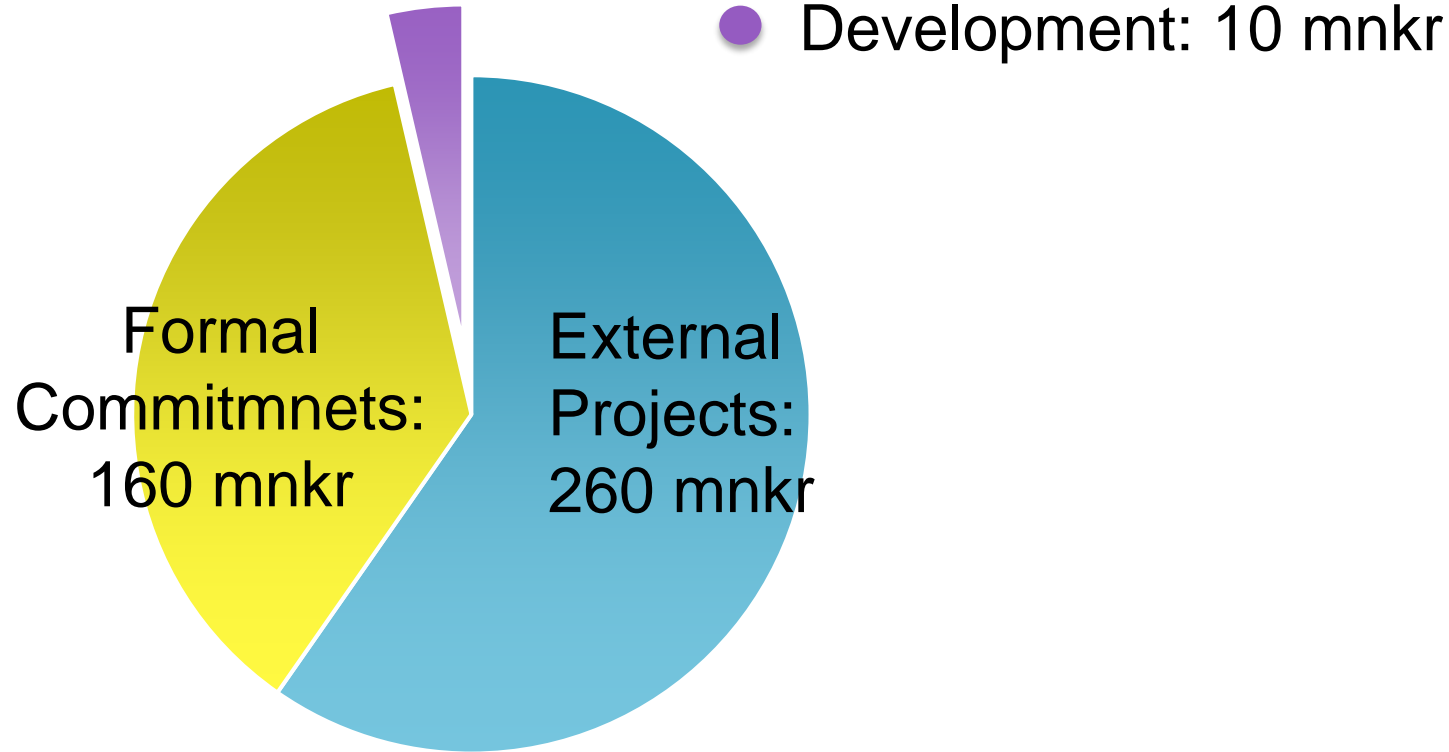
Agenda 2030



An artistic interpretation of SLU's environmental monitoring and assessment. This emphasizes how expeditiously SLU's experts must work to deliver timely decision support concerning sustainable management of natural resources.

Reproduced with the kind permission of the artist, Erik Walfridsson

Budget - 12% of SLU:s total



Where are we?



Where have we been?



Where do we want to go?



What is Environmental Assessment to you?

5 minute
bee-hive



Aquatic Resources

- Fishery policies
- International reporting



Bild: Skipsteknisk AS



Forest Data

- Sweden's official statistics
- biobaserad ekonomi



1:8 500 000

www.slu.se/skogskarta

ArtDatabanken ensures that knowledge
benefits nature conservation!

Ptilium crista-castrensis
Photo: Torbjörn Östman

www.artportalen.se

A Swedish Species Observation System



NYTT

Kom igång!

Lär dig hur du använder Artportalen

Öppna vår guide

Fåglarna lyfter Artportalen

Nu har fåglarna flyttat in och fört med sig en hel del förbättringar. Startsidan innehåller numera både en karta med den senaste statistiken och en lättanvänd Kom igång-guide för den nye användaren. Vi önskar alla fågelrapportörer välkomna!

258 Bilder

Dagens bilder

Grundprinciper

- Dina fynd visas öppet
- Känsliga arter skyddas
- Du ansvarar själv för kvaliteten
- Utvalda fynd kvalitetsgranskas
- Säker och långsiktig datalagring

Läs mer

Nyheter

2016-03-16
Nya arter, namnändringar & buggrättningar

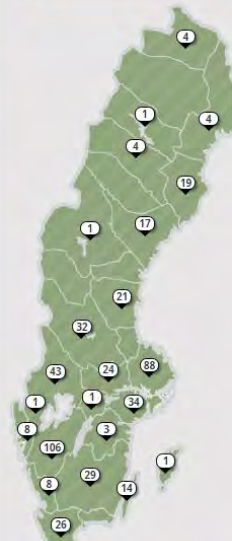
2016-02-07
Artportalen data görs tillgängligt för allmänhet och skogsägare via Skogsstyrelsen

2016-02-02
Ny release

Dagens fynd

IDAG/IGÅR: Idag 489 Fynd, 137 Arter

ARTGRUPP: Alla



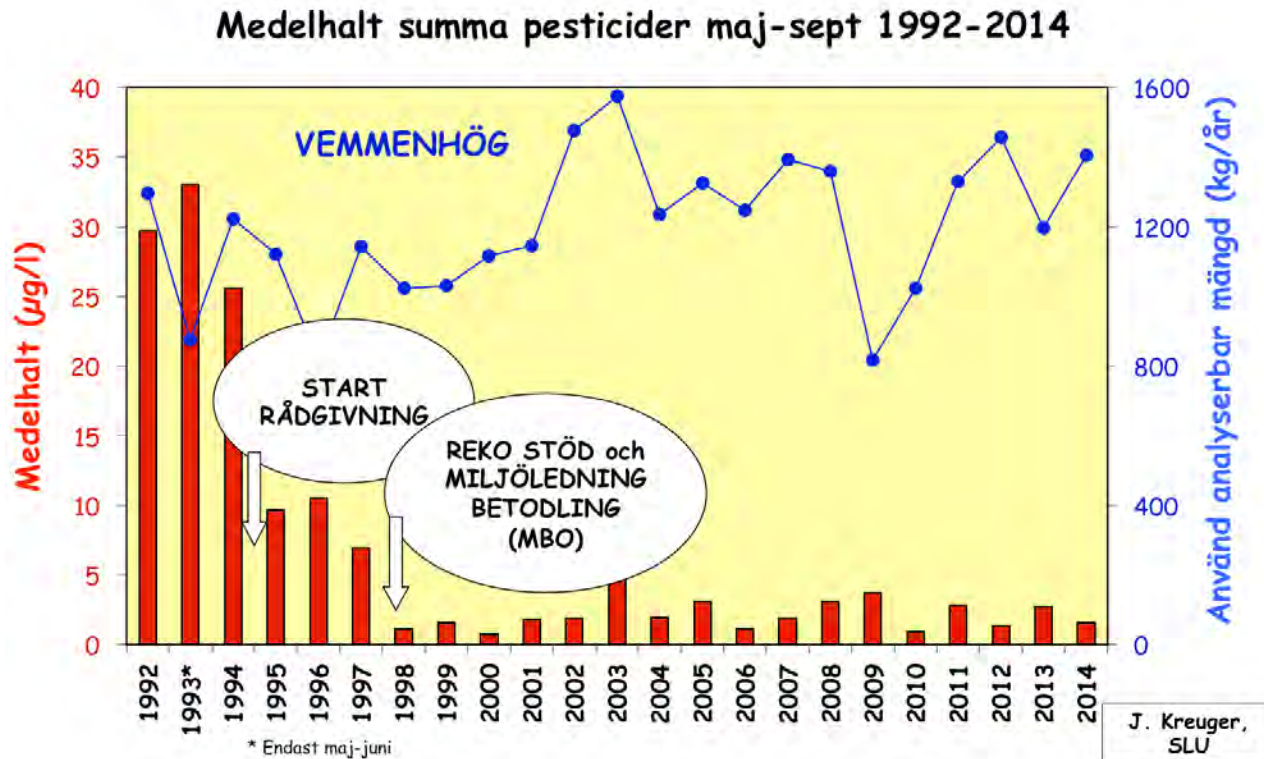
TOTALT 51 427 428 2016: 788 693

ArtDatabanken

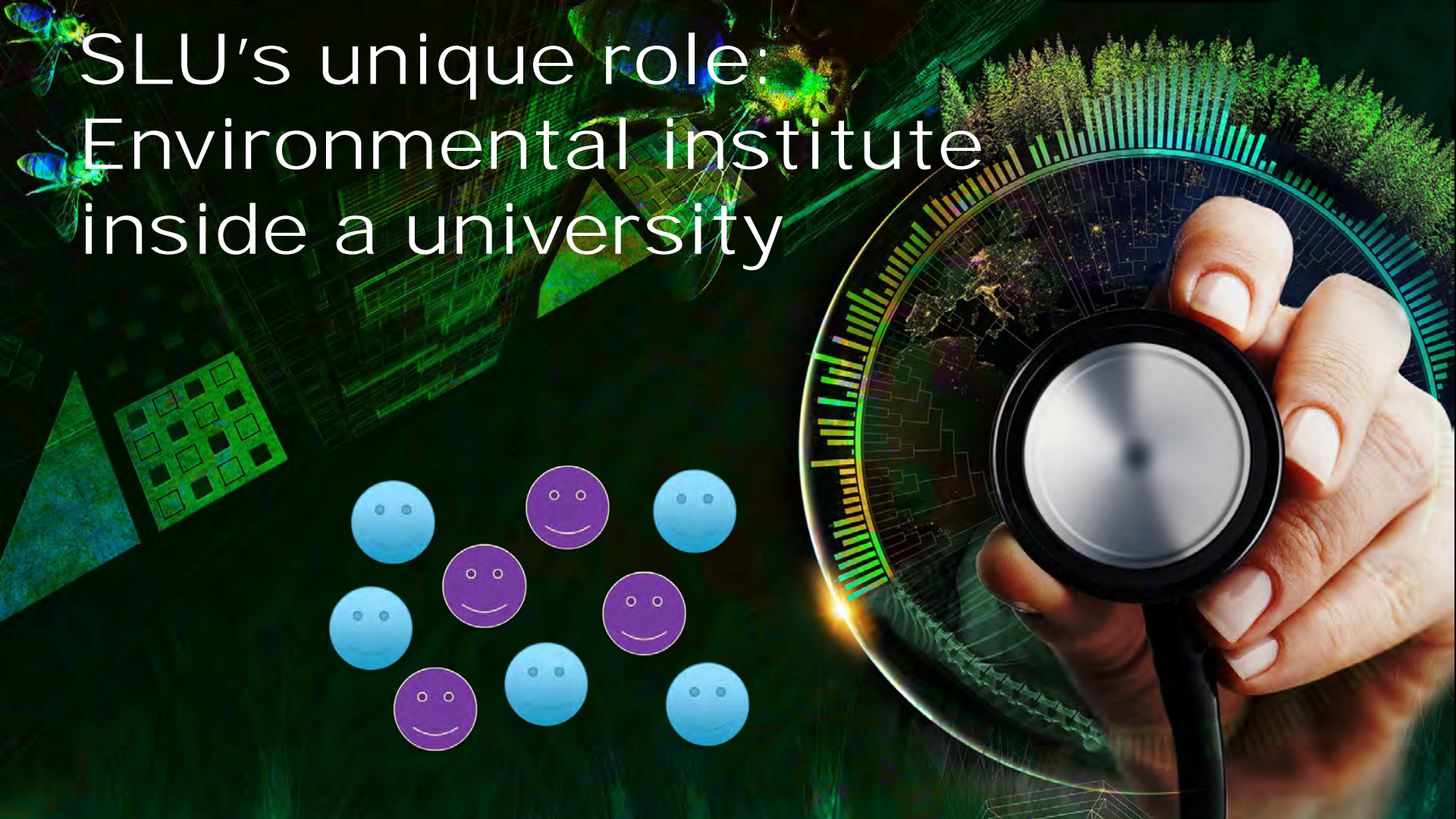
Reducing Pesticide Pollution



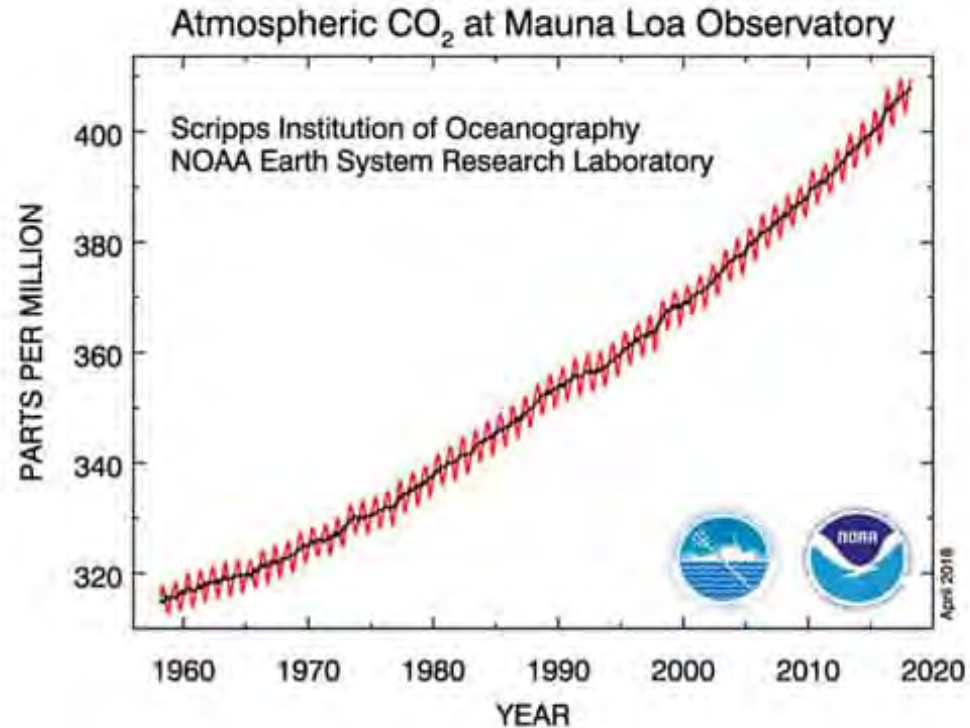
90% reduction of pesticide use!



SLU's unique role:
Environmental institute
inside a university



Environment Measurement: Second Class Science?



Environment Measurement: Second Class Science?

FIELD STATIONS AND DATA
open for researchers

Use our field stations

Covering subarctic mire, boreal mire, pine and forest, marine environment and agricultural land. Three sites have high masts (102-150m) for atmospheric studies above forests.

Access all ICOS data

Our stations are staffed to provide homogenous, continuous, high quality data to the scientific community. Data from all ICOS stations, in Sweden and elsewhere, is open access.

www.icos-sweden.se

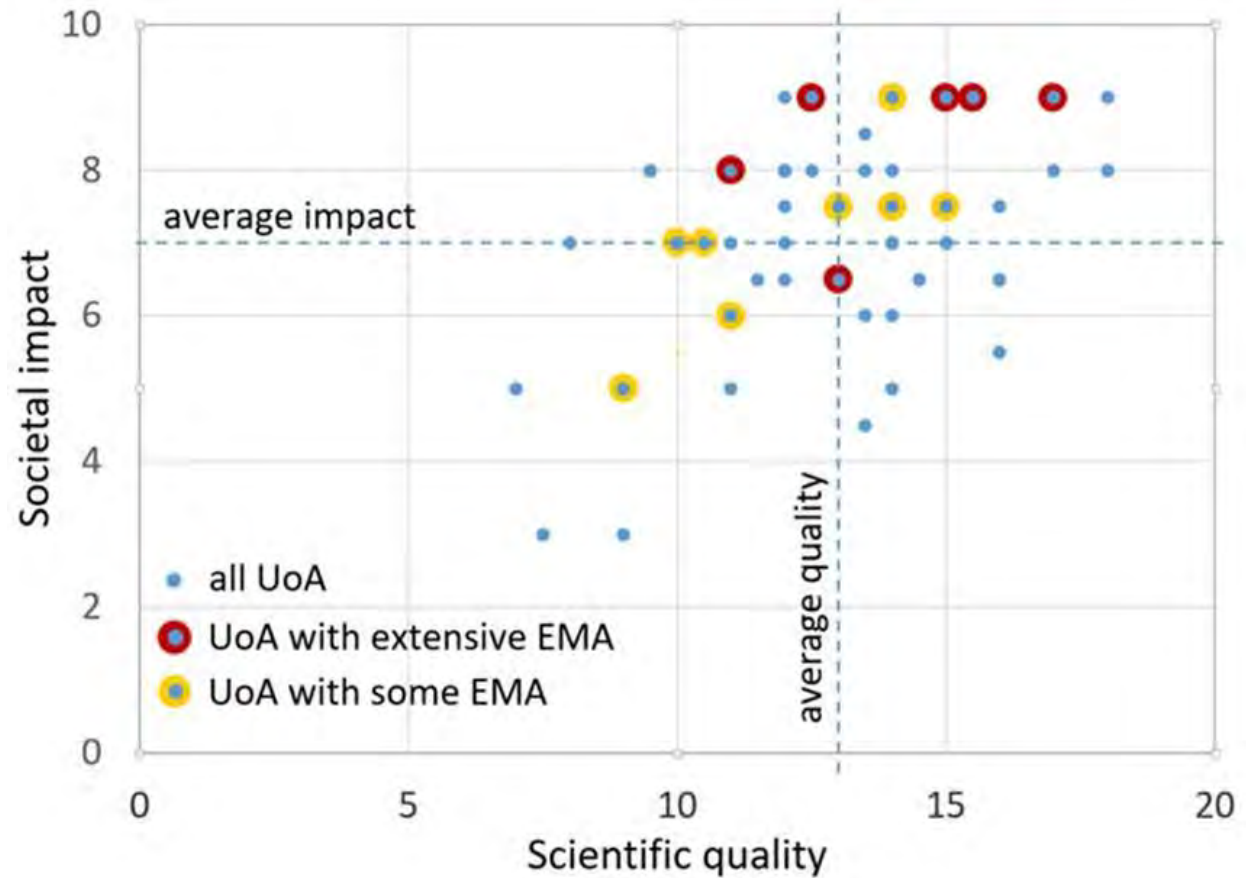
ICOS


National
Network
Sweden



Is EMA
working
for SLUs
research?

Ask KON!



Programs around Environmental Goals:

- Skog
- Jordbrukslandskap
- Sjöar och vattendrag
- Kust och hav
- Bebyggd miljö
- Klimat
- Biologisk mångfald
- Övergödning
- Försurning
- Giftfri miljö

Bringing government
agencies in contact
with researchers



FOMA-Faculty Matrix:

Balancing Production and Environment

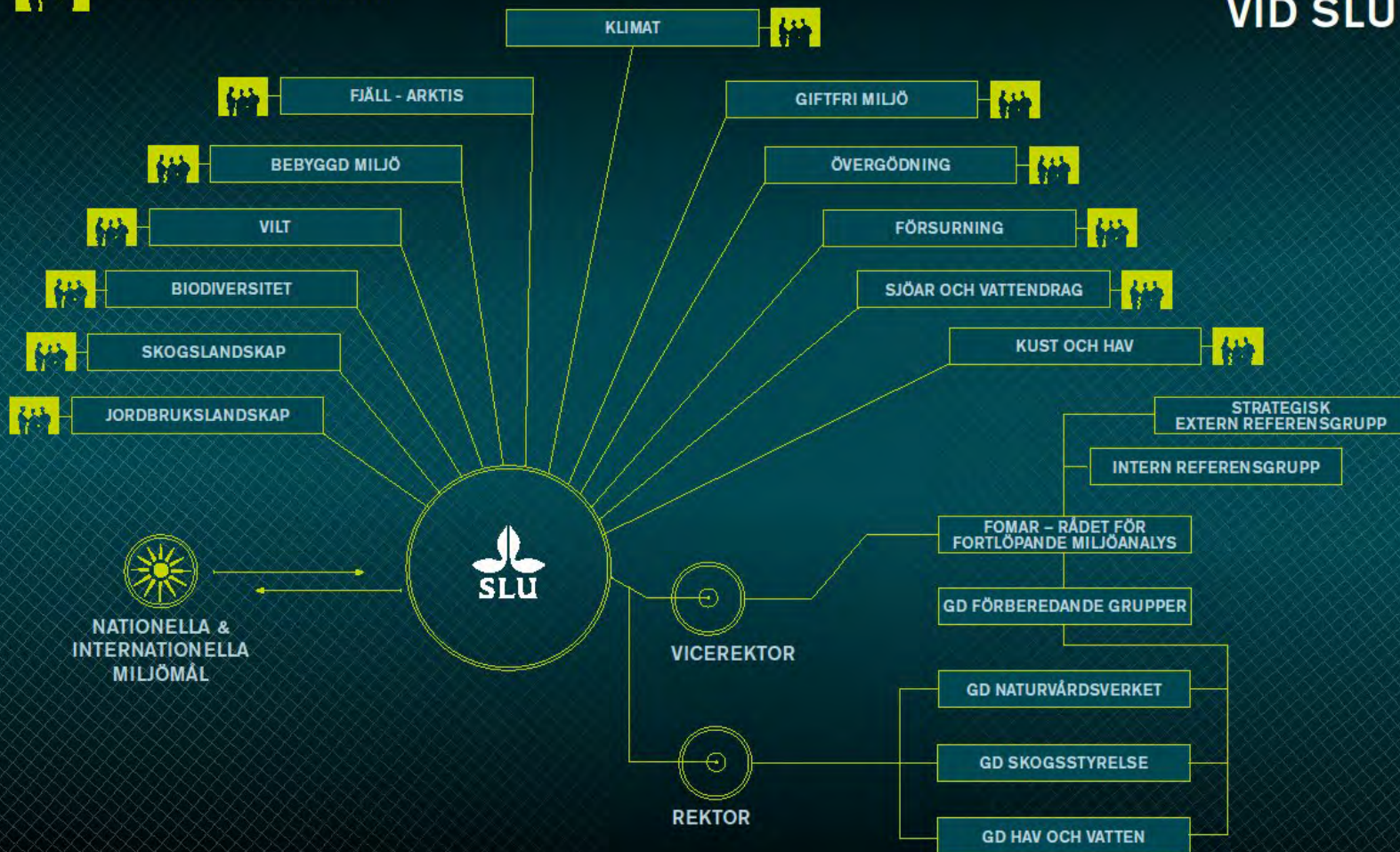
Environmental Monitoring & Assessment Programs

Faculties

	Skog	Jordbruks- landskap	Sjöar och vattendrag	Kust och hav	Bebyggd miljö	Klimat	Biologisk mångfald	Över- gödning	Försurning	Giftfri miljö
Skogsvetenskap										
Naturresurser och jordbruksvetenskap										
Veterinärmedicin och husdjursvetenskap										
Landskapsarkitektur trädgårds- och växt- produktionsvetenskap										



= PROGRAMREFERENSGRUPP



Challenge!

from Swedish Environmental Goals
to Agenda 2030 Sustainable Development Goals (SDG)



The Swedish Environmental Goals



The guiding light for
Swedish Environmental Monitoring
and Assessment

And SLU too!



Evidence-based navigation of SDG synergies and conflicts:

Renewing Environmental Monitoring and Assessment
for a more effective role in Agenda 2030

Forest Bioeconomy – (more cutting!)
Ethiopia, Chile and Sweden

Will more forests help water and food security?



**From <5% to 60% Forest Cover in a decade:
Too good to be true?
– Fast growing trees on good farmland**



Thanks
from
SLU!



SCIENCE AND
EDUCATION **FOR**
SUSTAINABLE
LIFE