

GUIDED BY LIGHT

The proposal visualized



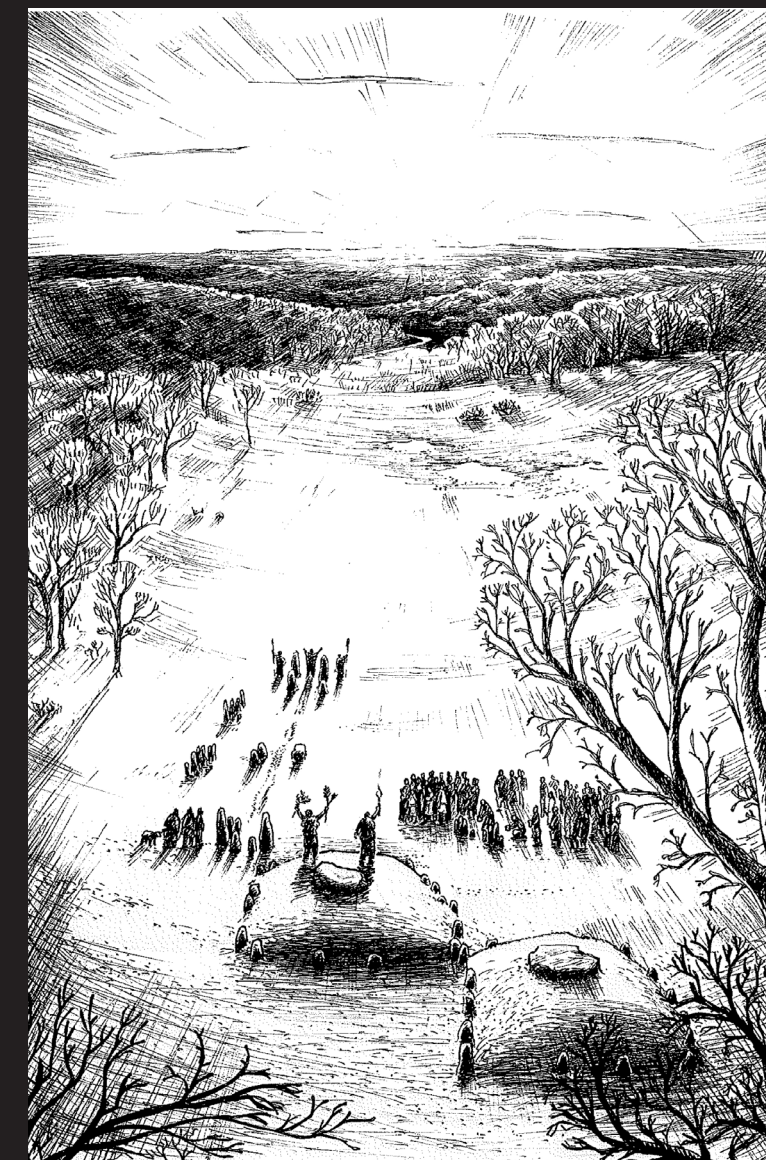
Collage: photo taken by Anna Broström, illustration done by Hanna Åberg

Concept

We have been thinking about the procession roads former purpose. It was used to get to the dolmens where people came to reach out to their ancestors. Their ancestors represented a greater knowledge and guidance, something to put their faith in.

Today religion has another meaning, a lot of people put their faith in science instead. Using science to guide our steps.

We want to emphasise the procession road, the movement in the name of something greater. We've put a portal at the beginning/end of the road as a statement of change, but also as a statement of similarity (the human need to put her faith in something). Today the end of the procession road, where the dolmens were, is going to be an entrance to the science village; capture the essence of the now and the then.

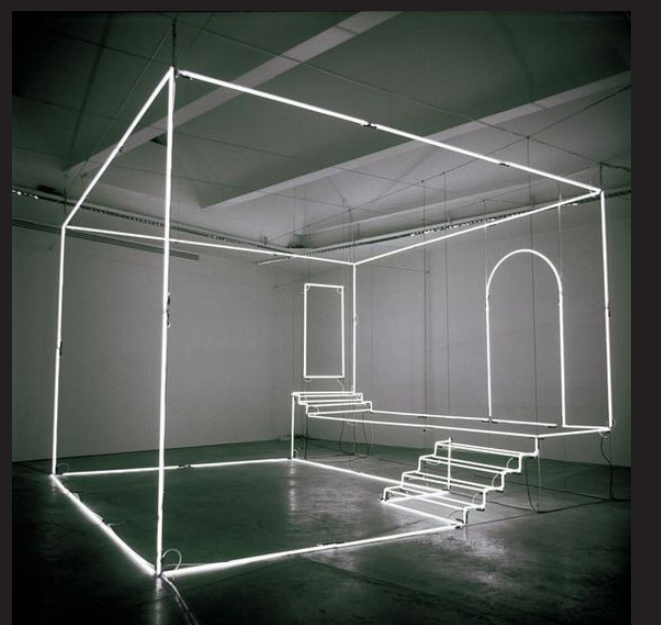


Reconstruction sketching: Richard Holmgren

Material, form, function

This proposal proceeds from the knowledge about where the procession road were, how the dolmens and how the road was formed. We have chosen only to visualize the contours of the dolmens and the stones along the road. The choose to only visualize the contours is based on respect to the history; we can never know exactly how the road looked like.

The material we have used is glass fibre. The glass fibre gives the proposal a modern expression. It is also one way to be honest to the history; now can never be then. Trying to reconstruct the processions road in a authentic way is going to include lies. The knowledge does not make an authentic proposal possible. We also believe the contrast the material shows between now and then, make the visitors think of the timeline of this place. The timeline including similarities and differences between people today and people 400 generations back in time.

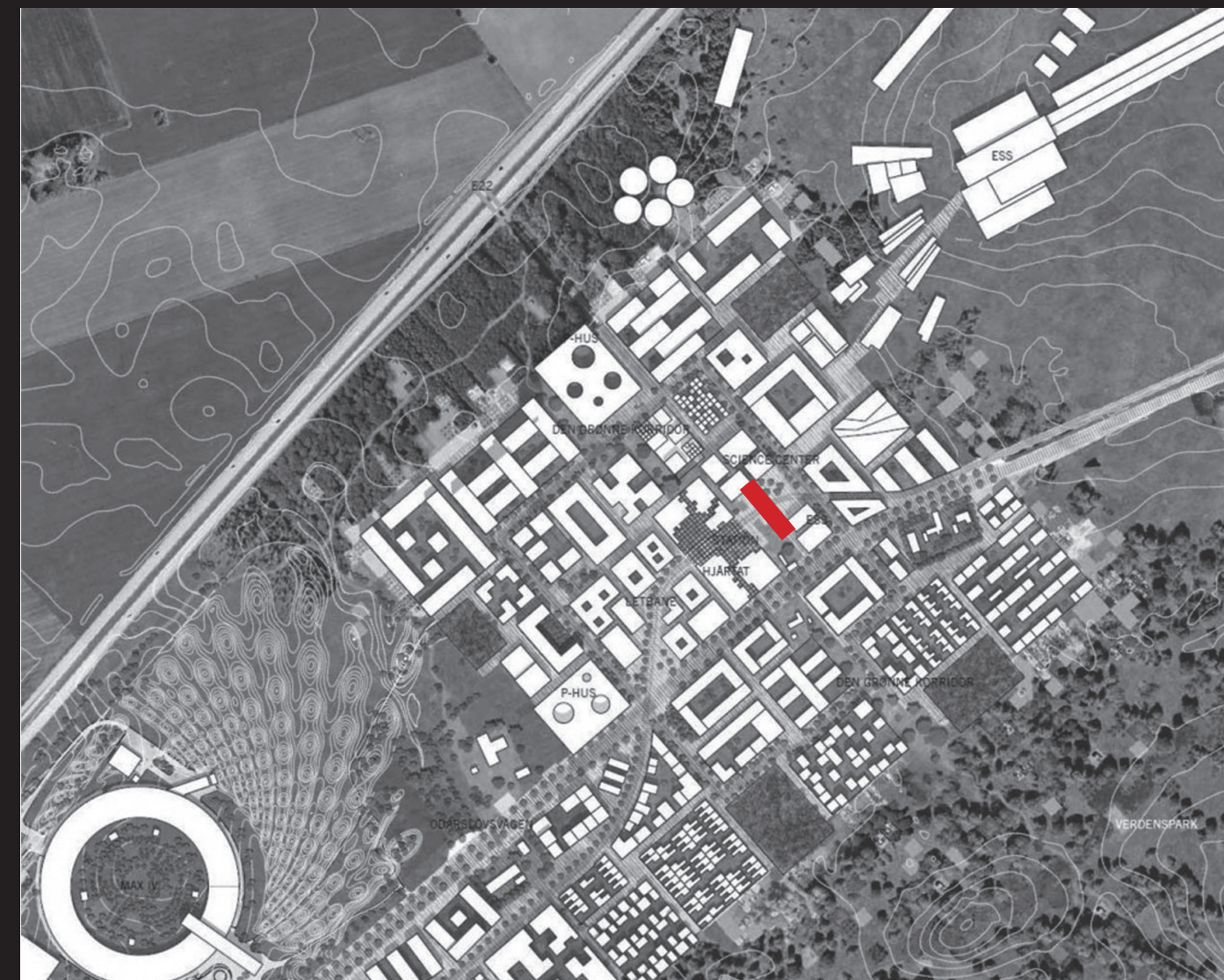


The proposal in its context

The science village is in between the ESS and MAX IV. These two buildings are made of strong geometrical forms. They are mainly built up by circles in light colors. The proposal aims to give a coherence architectural expression to the two main buildings.

The proposal is close by the square and tram station in the science village. The the procession road together with the tram station and square, are going to be the centrum of the area.

The Park of Knowledge park is placed below the proposal. The proposal therefore also going to be an entrance and connect the Park of Knowledge to the Science village.



Collage: map done by Fojab Architects, illustration done by Siri Allard



Reconstruction sketching: Richard Holmgren

The entrance has the form of a cylinder, placed horizontal. The reason why is to focus the gaze to something important 400 generations back, the view of the the midwinter sunrise. The view is the same today as then, and by means of the cylinder the history become present to the visitors of the place today. The midwinter sunrise was the reason to the direction of the procession road. The cylinder is also the only part of the proposal that is solid, making the present and past divided.

In the evening the road is going to be lighted from inside. The light creates a mystical atmosphere on the place and connects the mystical sense history brings. In the evening the procession road might be most realistic; the procession road is going to look like an illusion. The illusion is maybe as close we can reach history. In the dark, the lighted road has another clear function: making people feel safe in the dark.