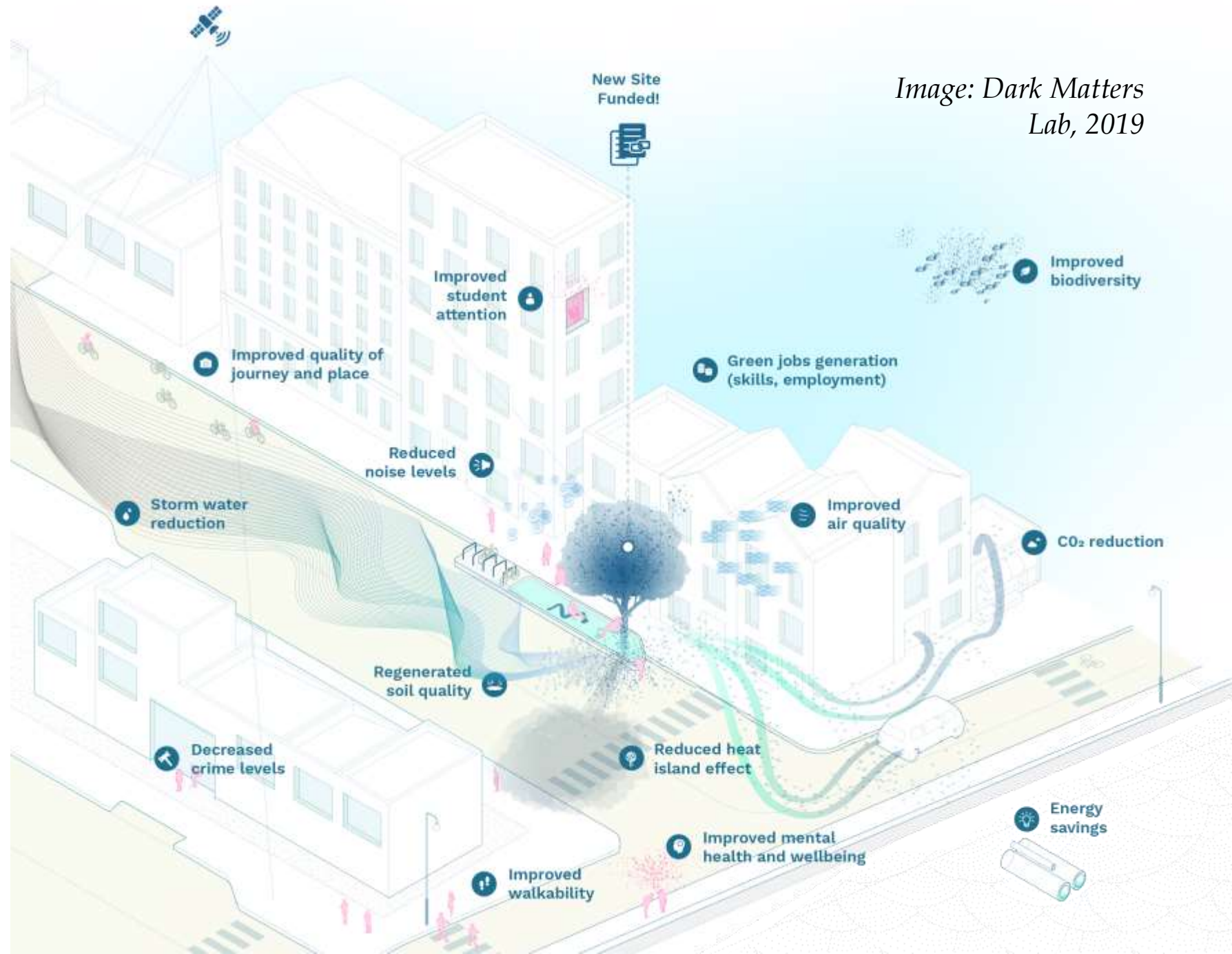


# A QUESTION OF CARE

*Exploring care as a critical concept for the future of  
the urban forest, the case of Parkstad (NL)*

# Ecosystem services urban forest

Image: Dark Matters Lab, 2019



Urban forestry

TU Delft

# Challenges for the urban forest

Image: Lokalkompass



Climate change

Image: Tree builders



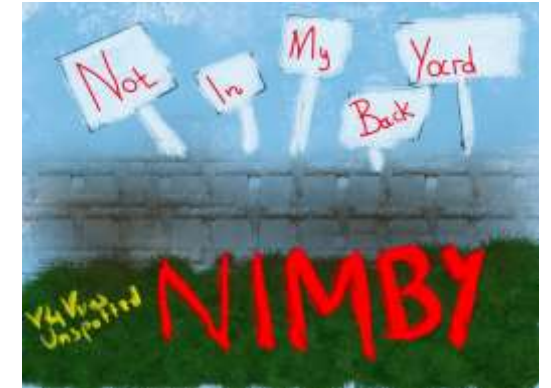
Lack of space

Image: Boom



Policy and  
management

Image: Unspotted

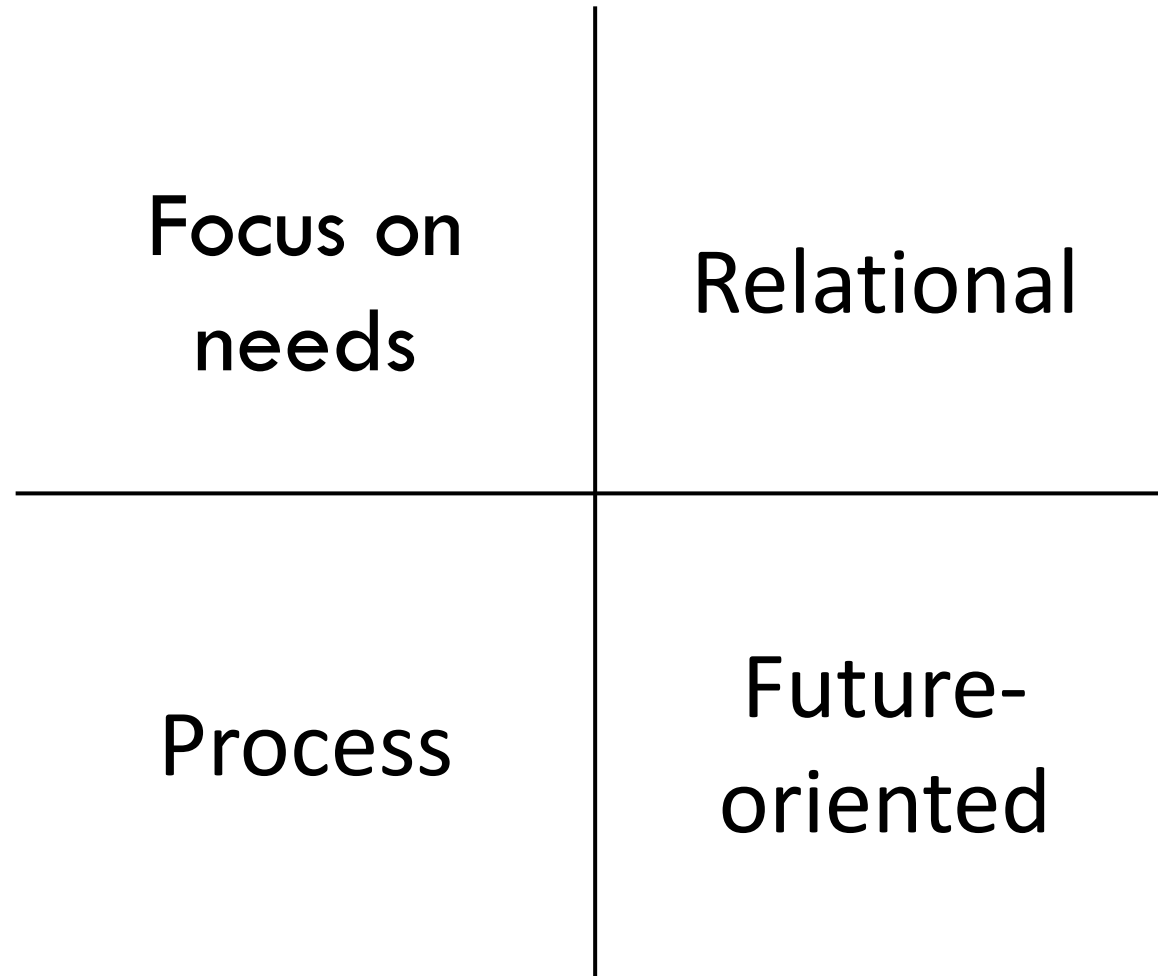


Acceptance

# *Rethinking human-forest relationships*



# Care and design



## *Care in a multi-species world*

Care as “a species activity that includes everything we do to maintain, **continue**, and **repair** our ‘world’ so that we can live in it as well as possible.

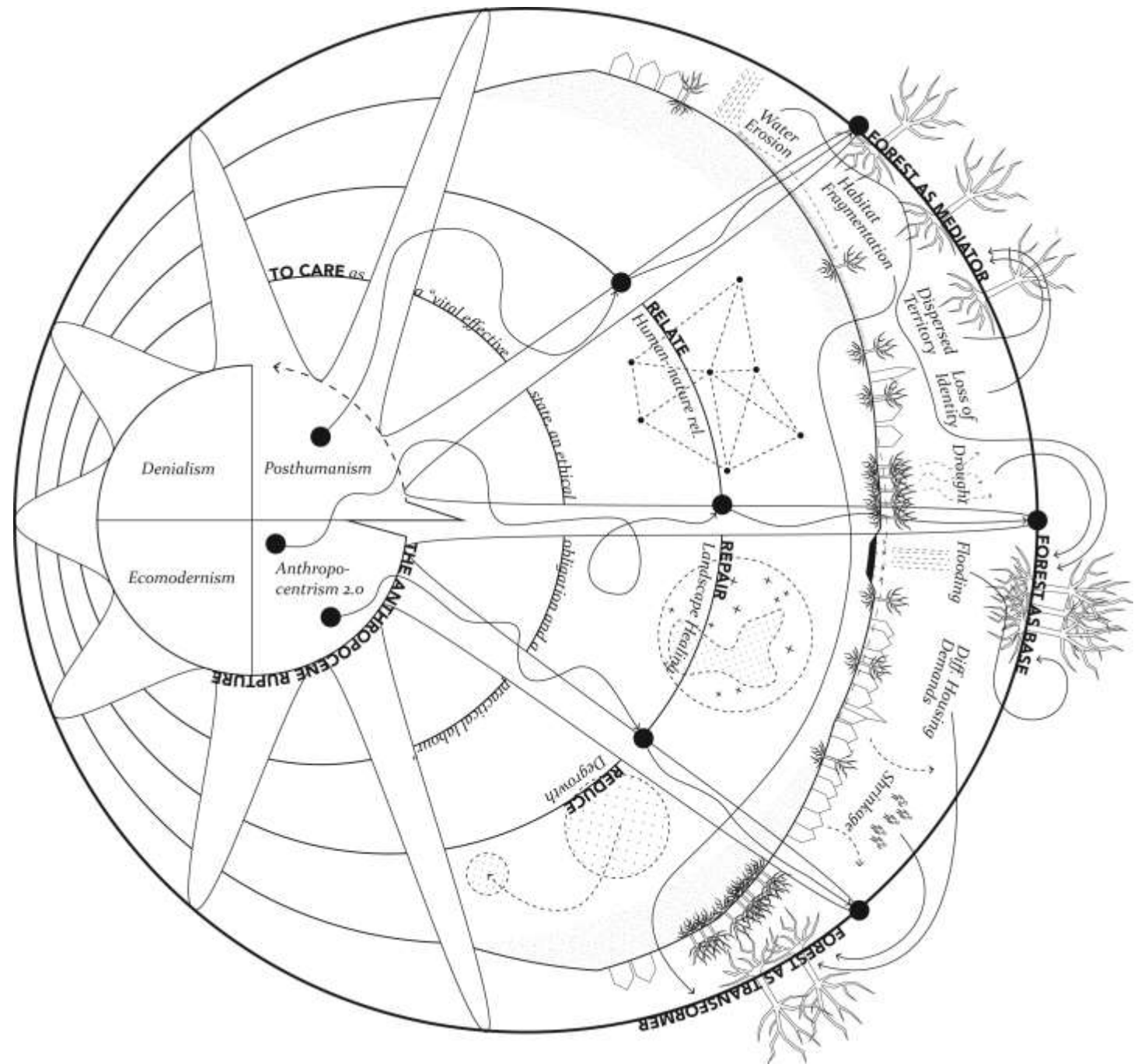
That world includes **our bodies, ourselves, and our environment**, all of which we seek to interweave in a **complex, life-sustaining web.**”

## *Care and design*

**“Today’s crisis reality asks architecture and urbanism to start from the interdependence of planetary inhabitation and continued liveability.”**

## Characterizing landscape care relations

- **Repair:** Re-establish healthy ecosystems
- **Relate:** Strengthen nature-culture relationships
- **Reduce:** Limit anthropogenic pressures





*Research question*

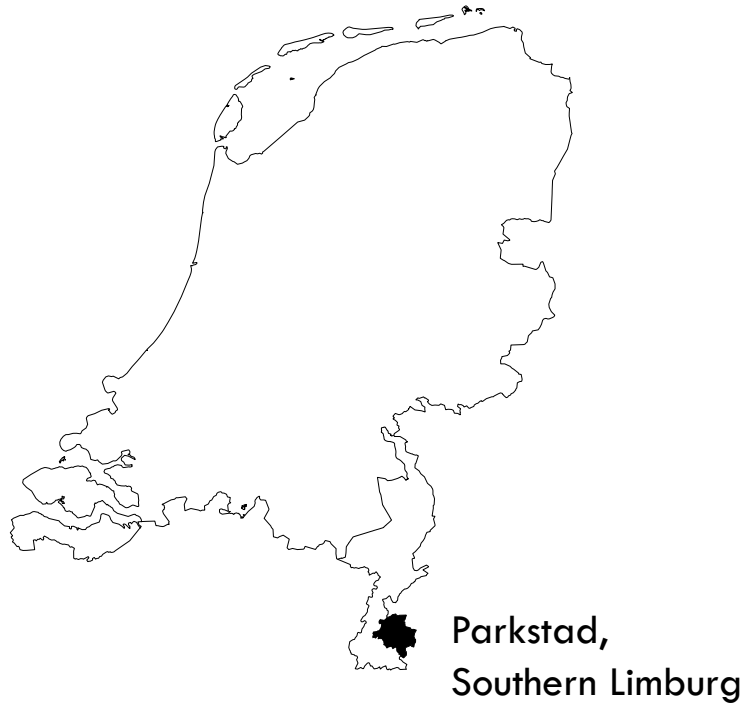
How can  
**care** as a critical concept  
reconfigure  
the **planning,**  
**design,**  
and **management**  
of the **urban forest?**



Urban  
forestry

TU Delft

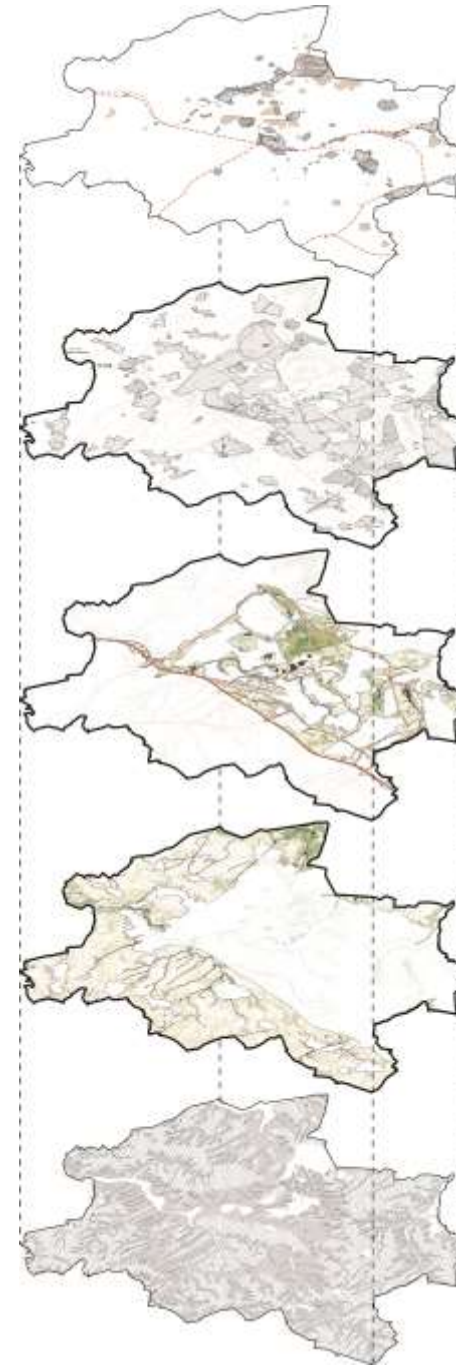
# Research by design project



Urban  
forestry

TU Delft

# *Parkstad, a dispersed territory*



**Lost landscape |**  
*Mining landscape*

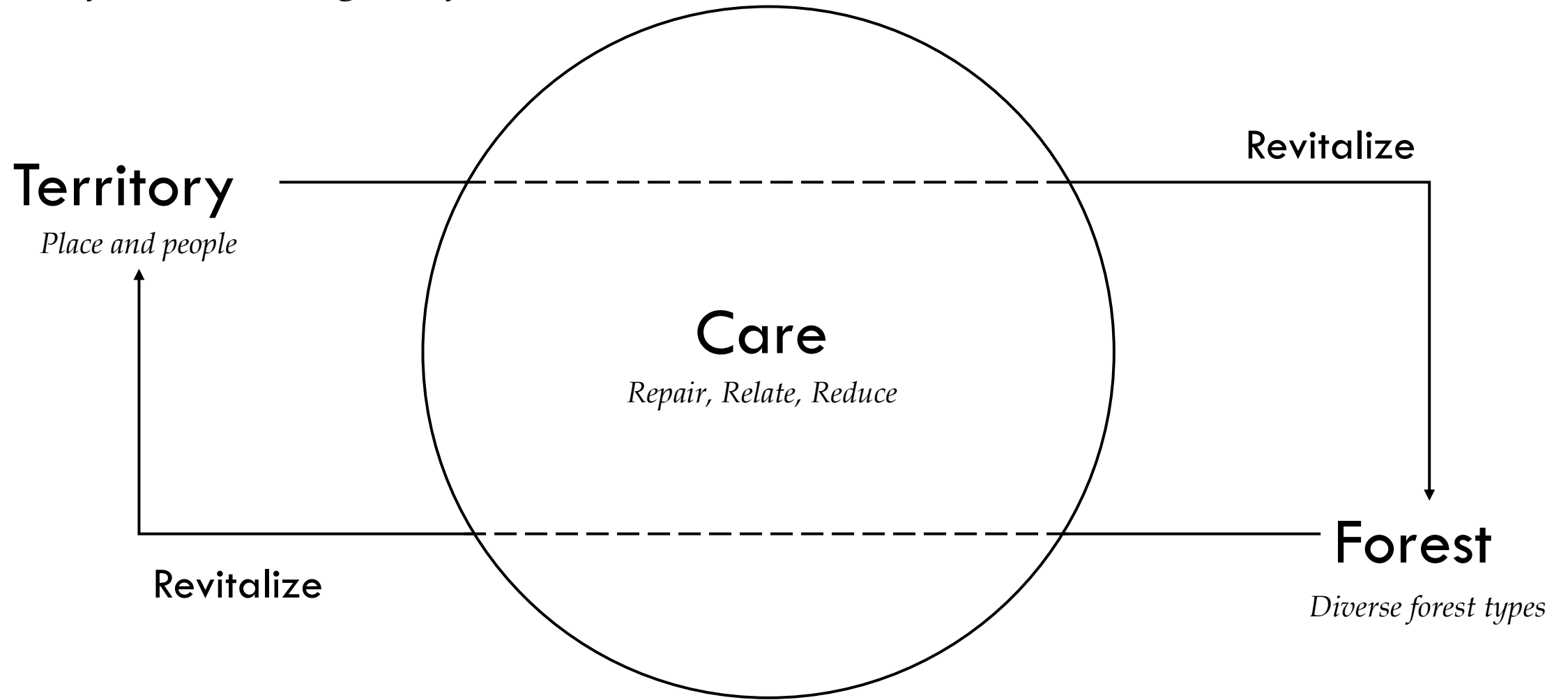
**Patchwork landscape |**  
*Urban landscape*

**Fragmented landscape |**  
*Interurban landscape*

**Ancient landscape |**  
*Cultural landscape*

**Plastic landscape |**  
*Natural landscape*

# *The forest as an agent of care*



## *Five starting points for a caring urban forest design practice*

	<b>Care considerations</b>	



## *Five starting points for a caring urban forest design practice*

	<b>Care considerations</b>	<b>Caring methods and tools</b>



## *Five starting points for a caring urban forest design practice*

<b>Notions on care</b>	<b>Care considerations</b>	<b>Caring methods and tools</b>



## *Five starting points for a caring urban forest design practice*

<b>Notions on care</b>	<b>Care considerations</b>	<b>Caring methods and tools</b>
	Position	
	Pattern and Structure	
	Use	
	Responsibility	
	Development	



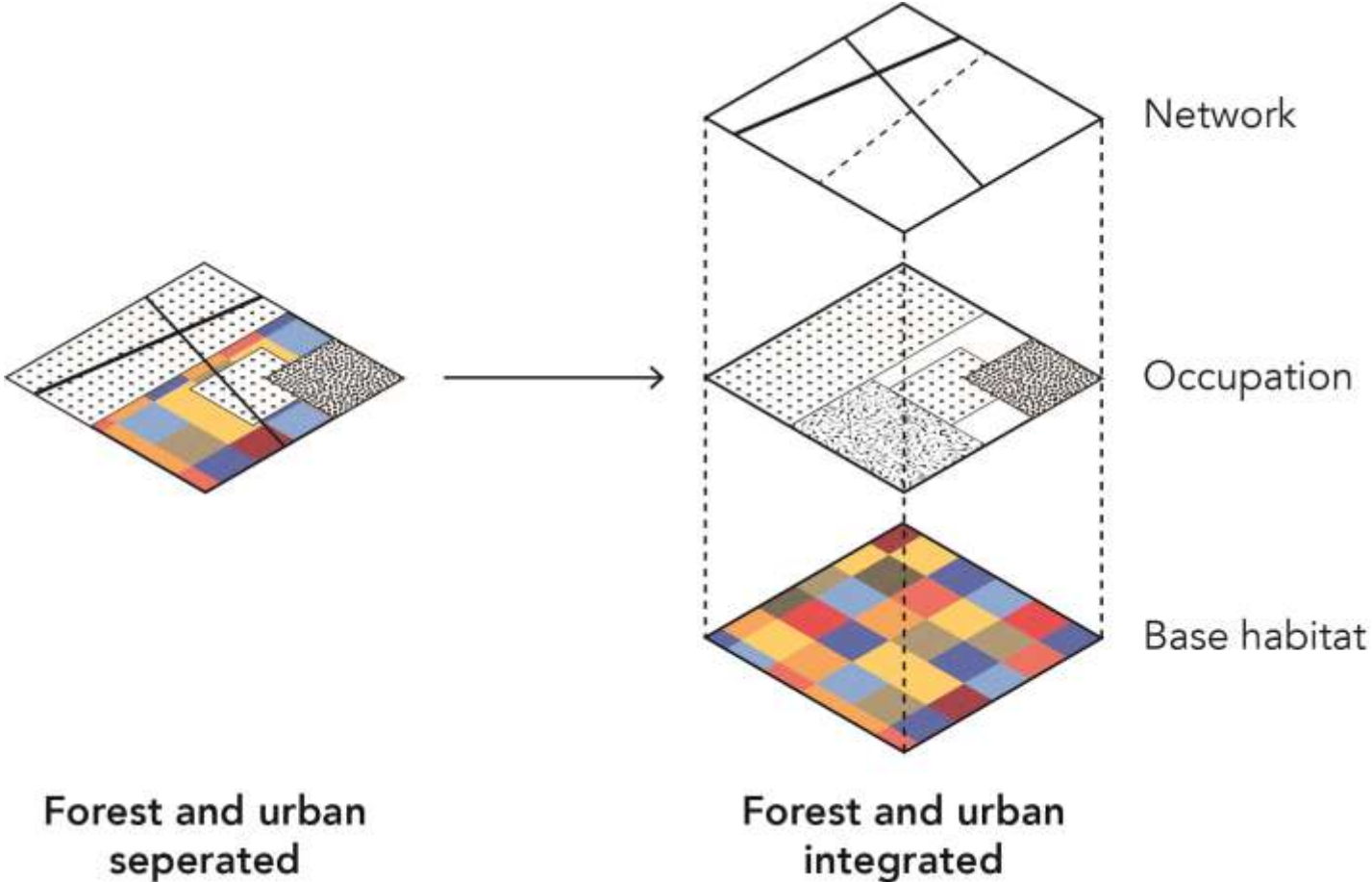


## *Five starting points for a caring urban forest design practice*

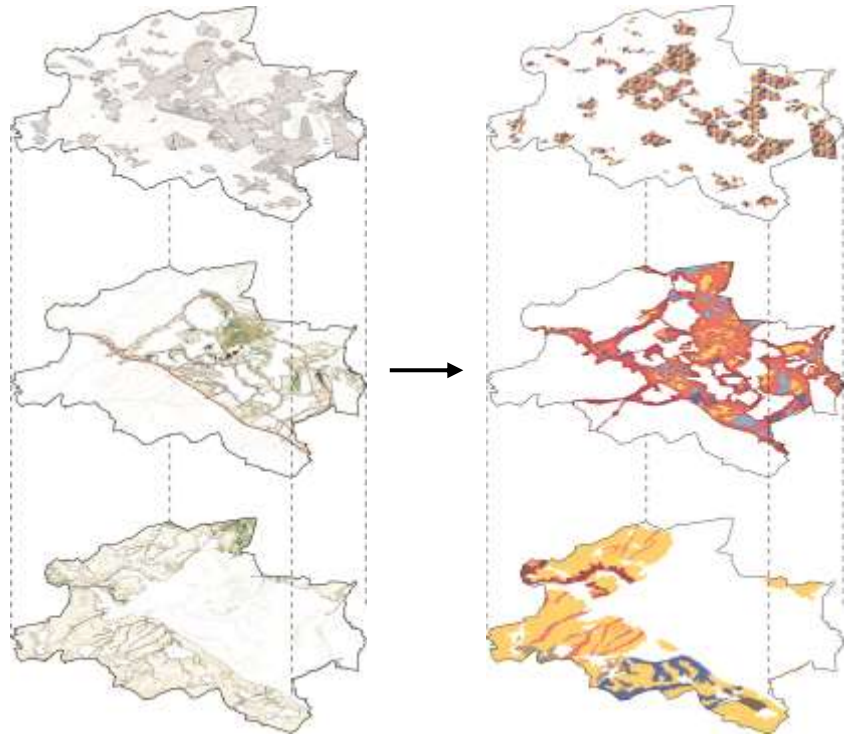
<b>Notions on care</b>	<b>Care considerations</b>	<b>Caring methods and tools</b>
	<b>Position</b>	
	Pattern and Structure	
	Use	
	Responsibility	
	Development	



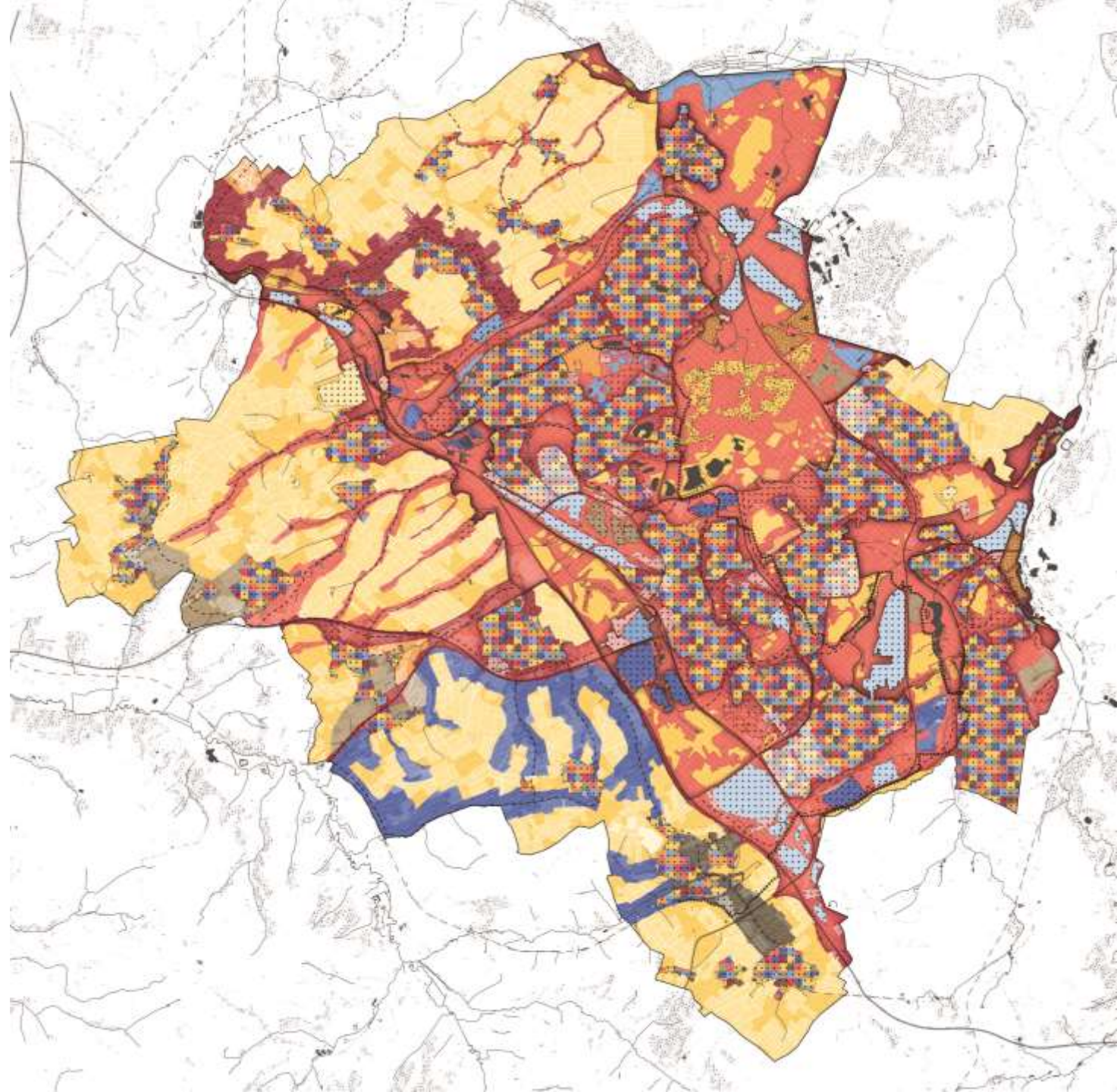
# *A horizontal, yet layered territory*



## *The all-forest territory*



The forest as a reading of the territory



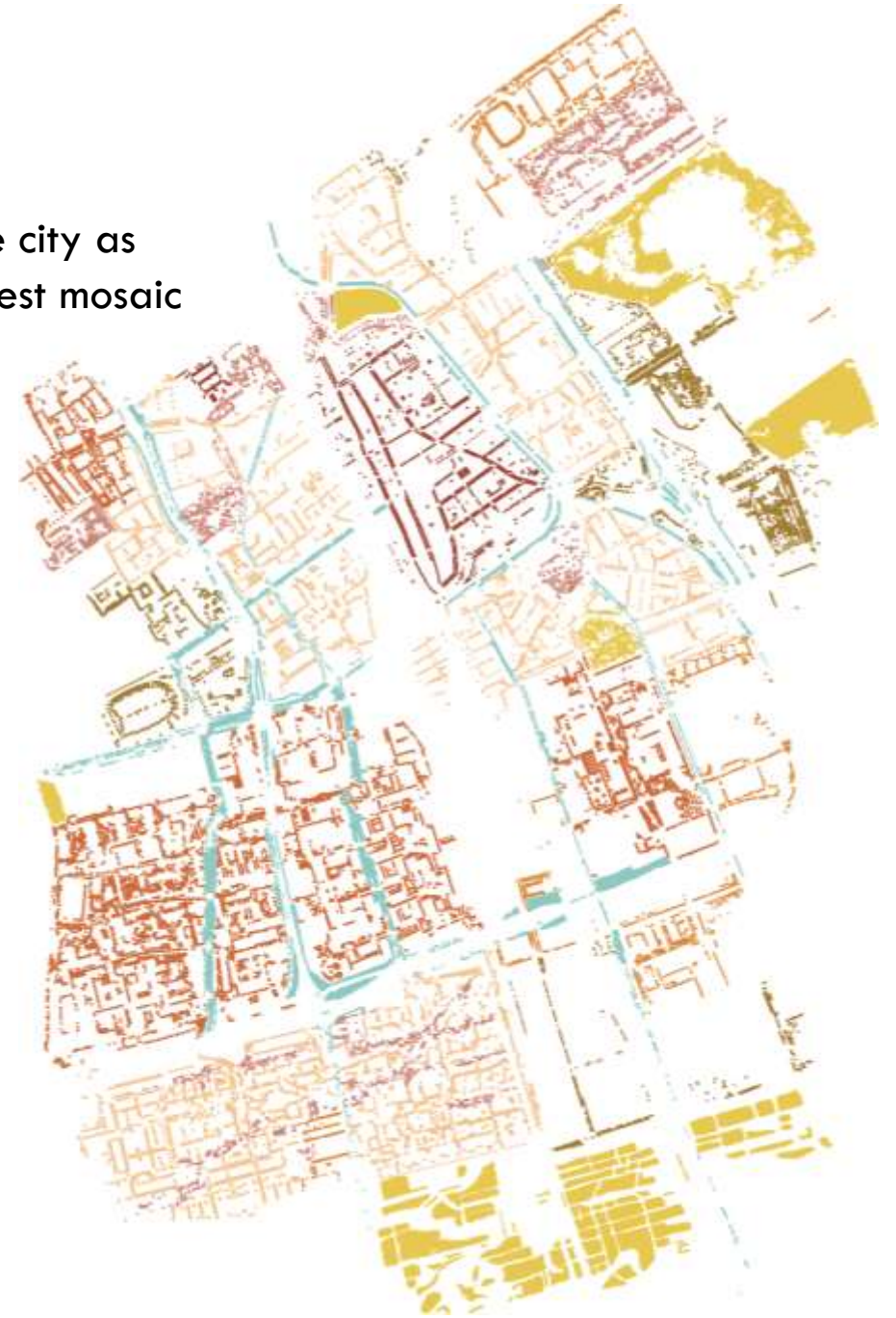
Urban  
forestry

TU Delft

# Reference: *De Delftse Bomenatlas*



The city as  
forest mosaic



Images: *Saskia de Wit, René van der Velde*



Urban  
forestry

TU Delft

## *Five starting points for a caring urban forest design practice*

<b>Notions on care</b>	<b>Care considerations</b>	<b>Caring methods and tools</b>
	<b>Position</b>	All forest plan
	Pattern and Structure	
	Use	
	Responsibility	
	Development	



## *Five starting points for a caring urban forest design practice*

<b>Notions on care</b>	<b>Care considerations</b>	<b>Caring methods and tools</b>
Connectedness, situatedness, future orient.	<b>Position</b>	All forest plan
	Pattern and Structure	
	Use	
	Responsibility	
	Development	



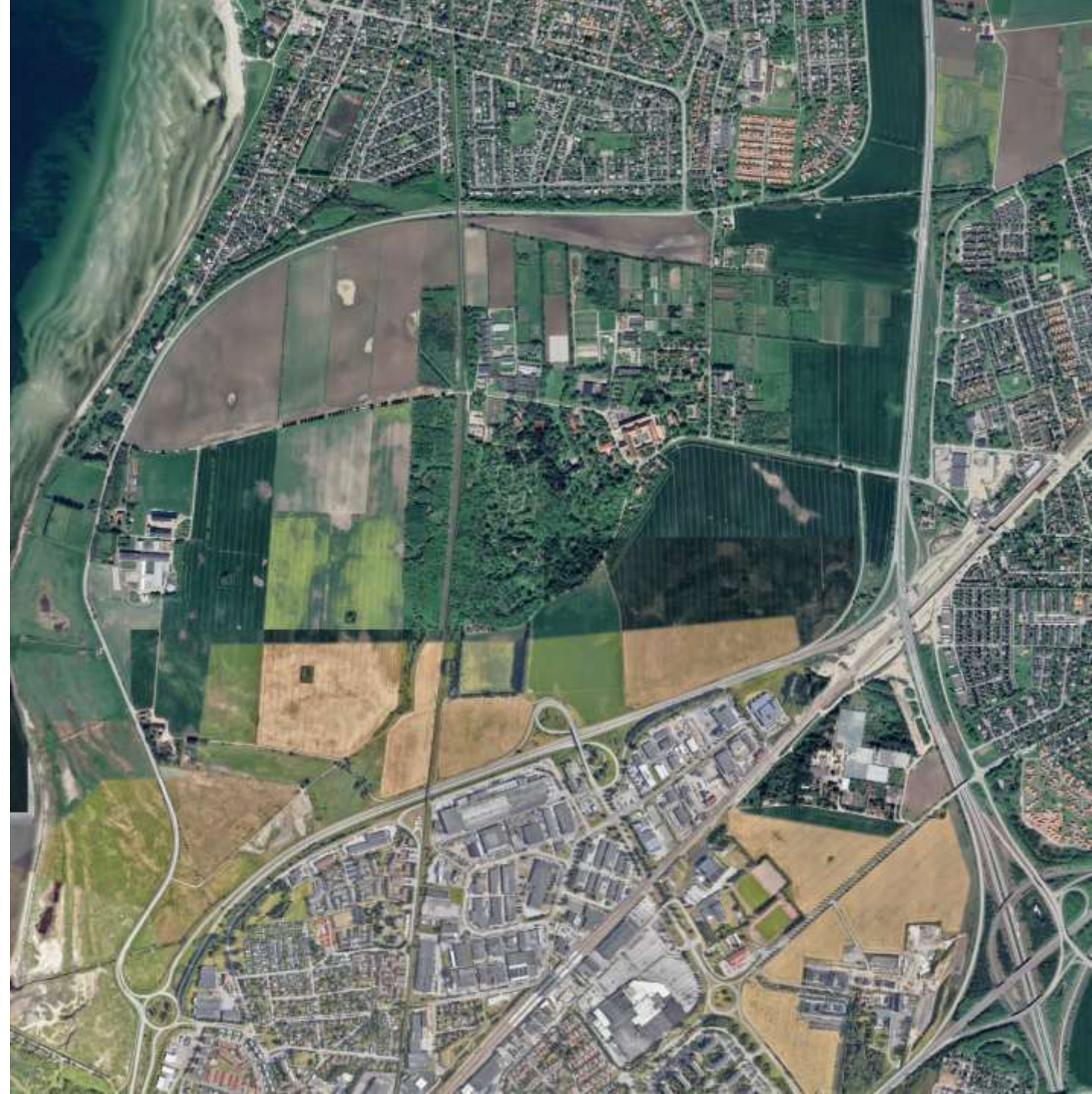
## *Five starting points for a caring urban forest design practice*

<b>Notions on care</b>	<b>Care considerations</b>	<b>Caring methods and tools</b>
Connectedness, situatedness, future orient.	Position	All forest plan
	<b>Pattern and Structure</b>	
	Use	
	Responsibility	
	Development	



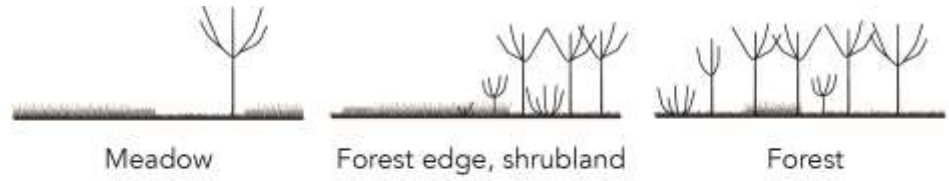
# *Reference: Landscape Laboratory Alnarp*

*Image: Google Earth*

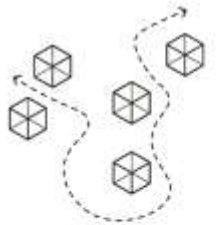




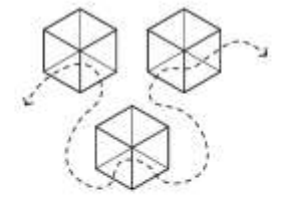
# A new forest typology



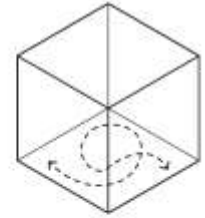
Environmental, ecological development directions



Moving around

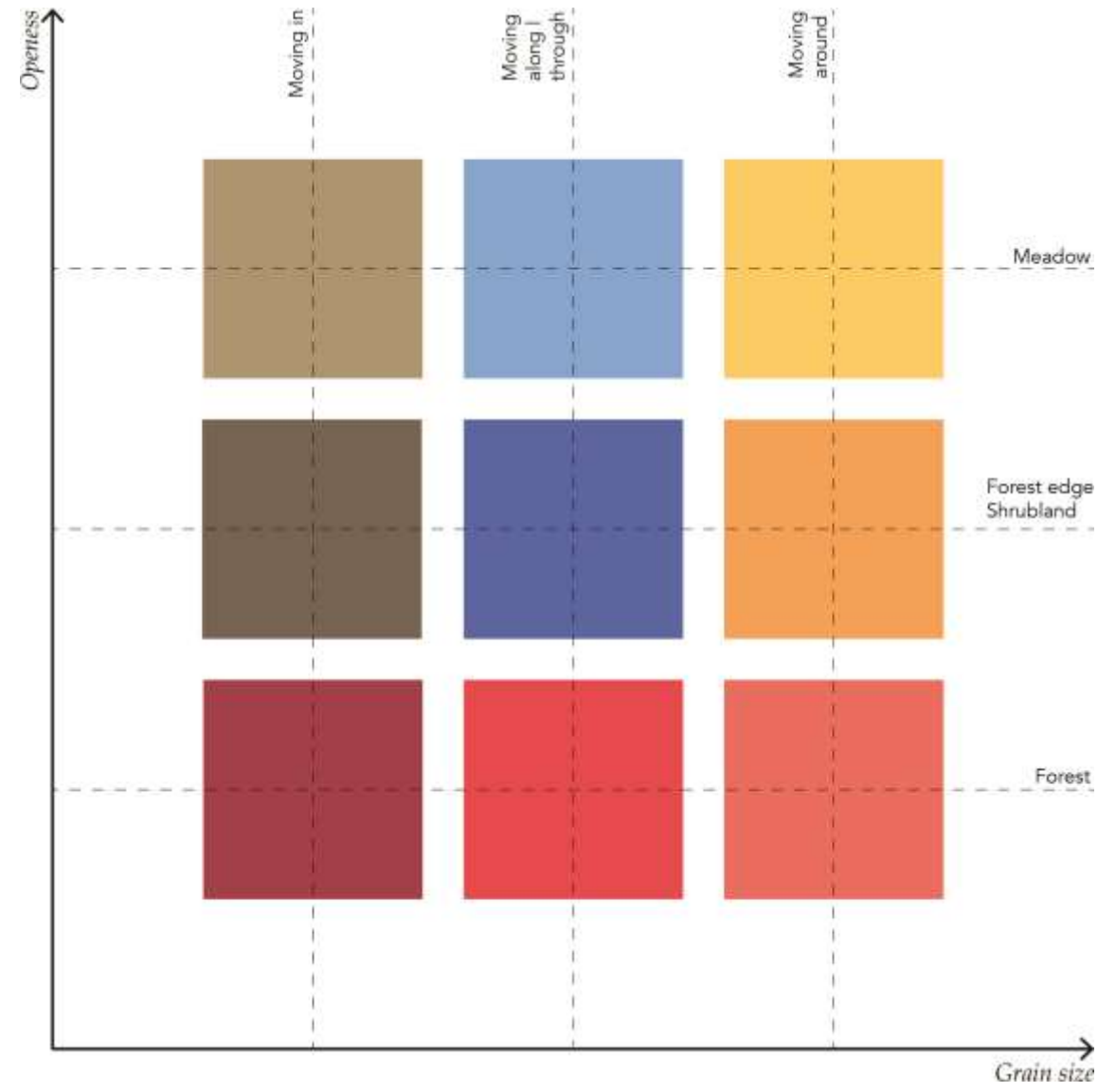


Moving along, through

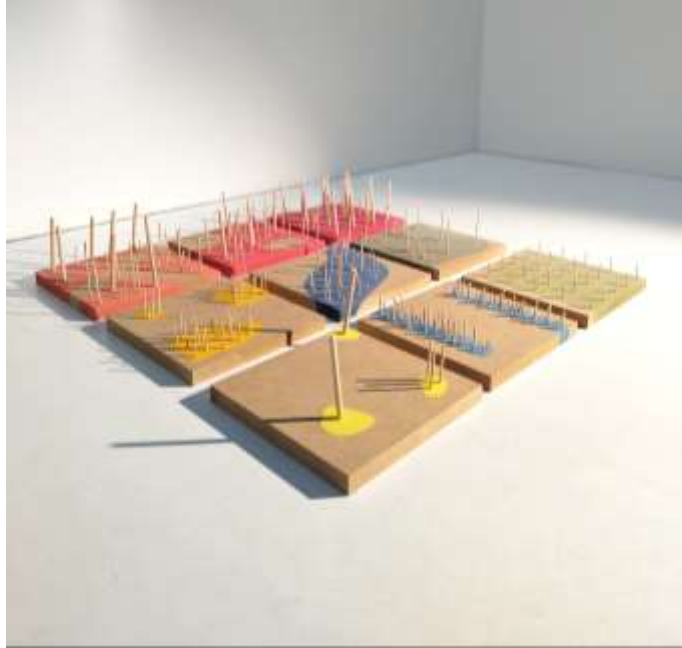


Moving in

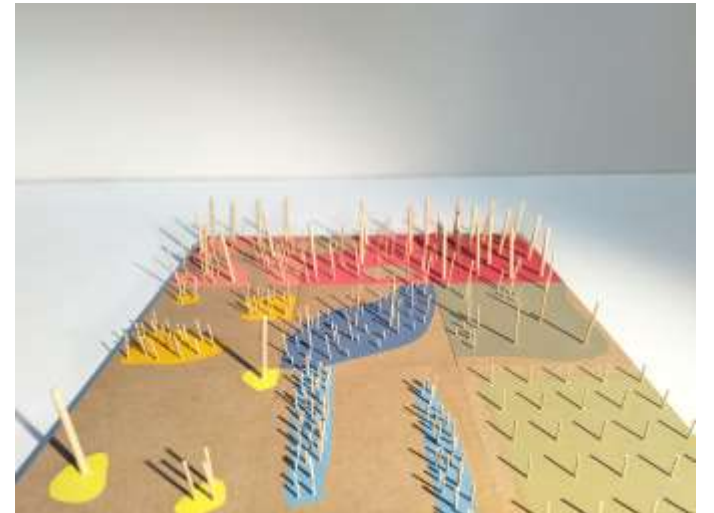
Spatial development directions



# *Distinguishing nine types*

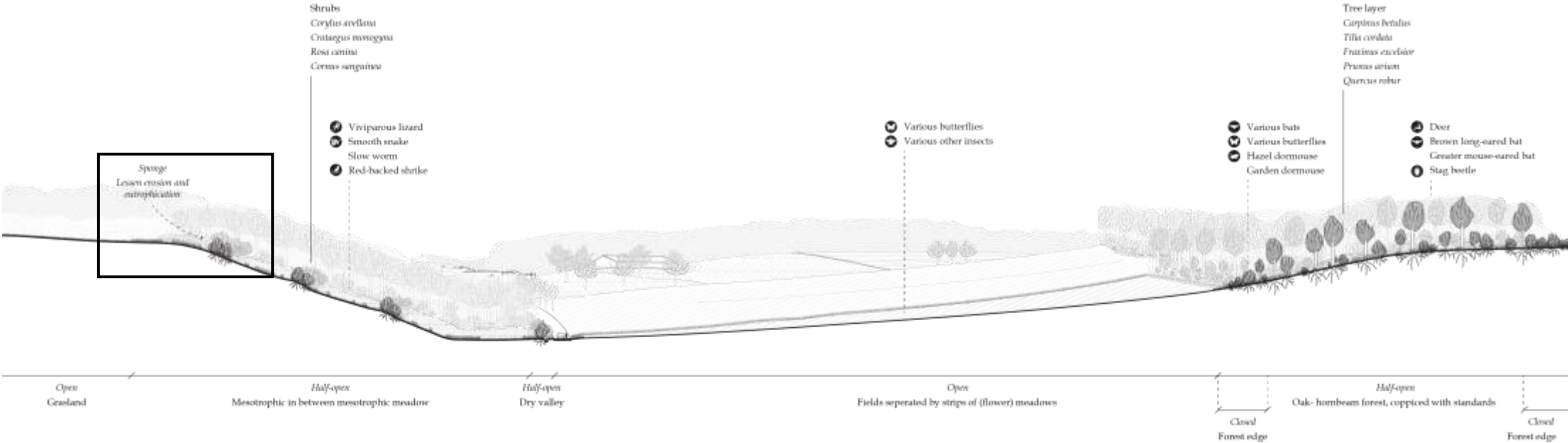
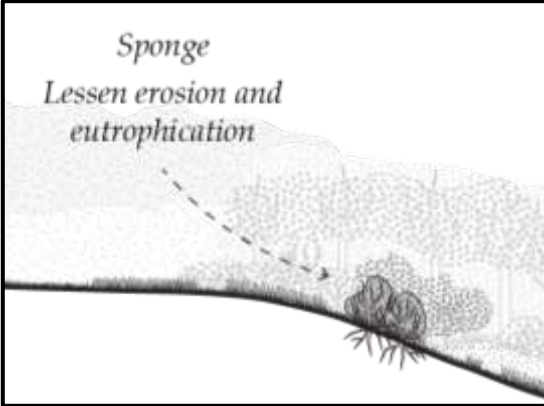


Each type can be developed further throughout time and space



# Applying forest types

Each type can be further developed to respond to different needs



## *Five starting points for a caring urban forest design practice*

<b>Notions on care</b>	<b>Care considerations</b>	<b>Caring methods and tools</b>
Connectedness, situatedness, future orient.	Position	All forest plan
	<b>Pattern and Structure</b>	Forest typology
	Use	
	Responsibility	
	Development	



## *Five starting points for a caring urban forest design practice*

<b>Notions on care</b>	<b>Care considerations</b>	<b>Caring methods and tools</b>
Connectedness, situatedness, future orient.	Position	All forest plan
Liveability, situatedness, latency, attachment	<b>Pattern and Structure</b>	Forest typology
	Use	
	Responsibility	
	Development	

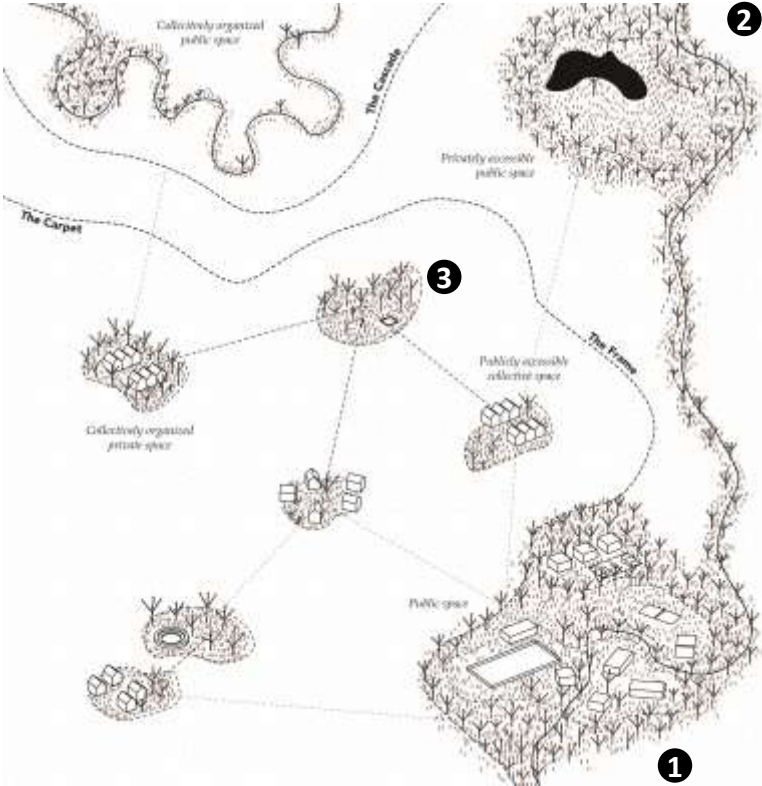


## *Five starting points for a caring urban forest design practice*

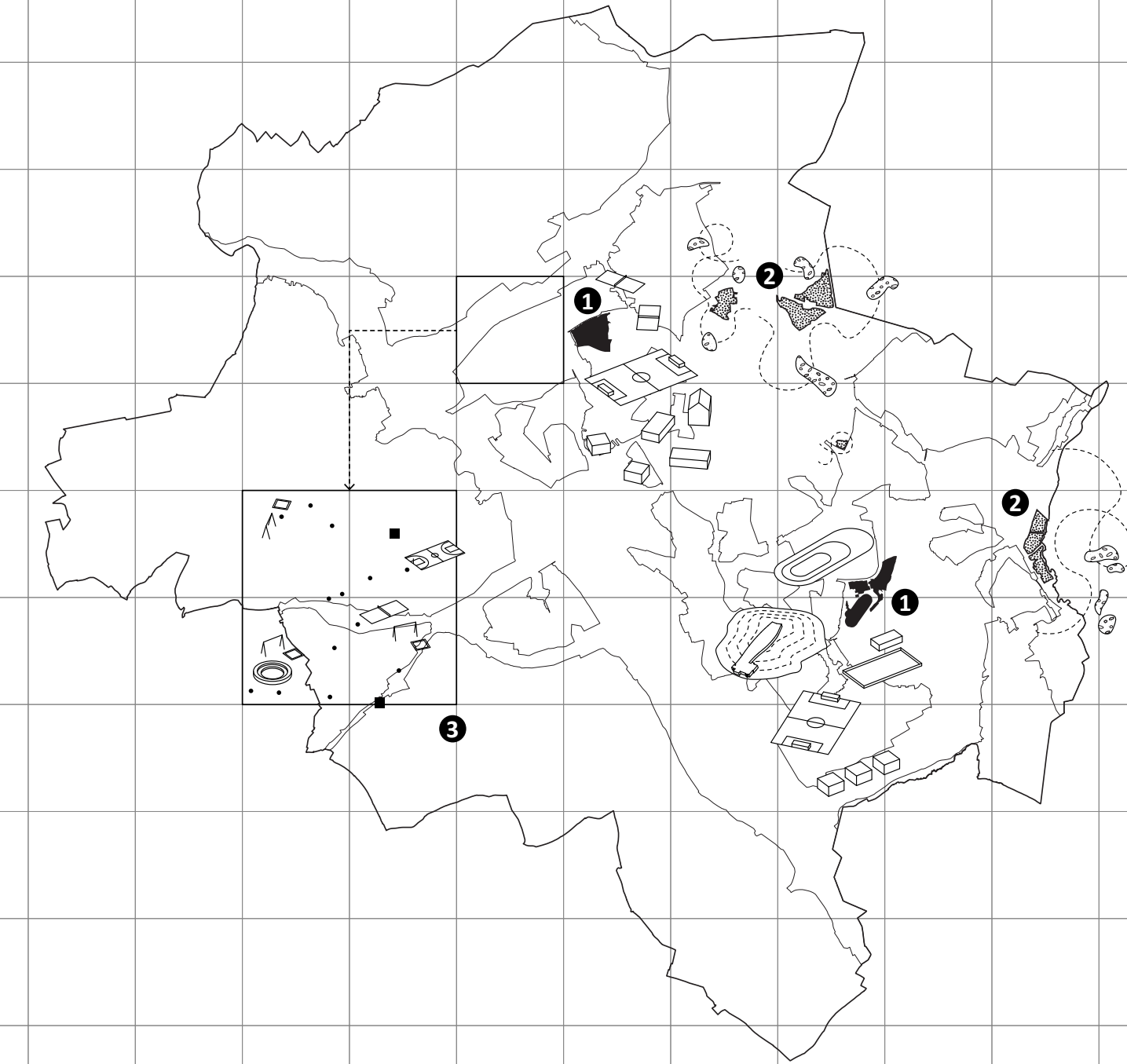
<b>Notions on care</b>	<b>Care considerations</b>	<b>Caring methods and tools</b>
Connectedness, situatedness, future orient.	Position	All forest plan
Liveability, situatedness, latency, attachment	Pattern and Structure	Forest typology
	<b>Use</b>	
	Responsibility	
	Development	



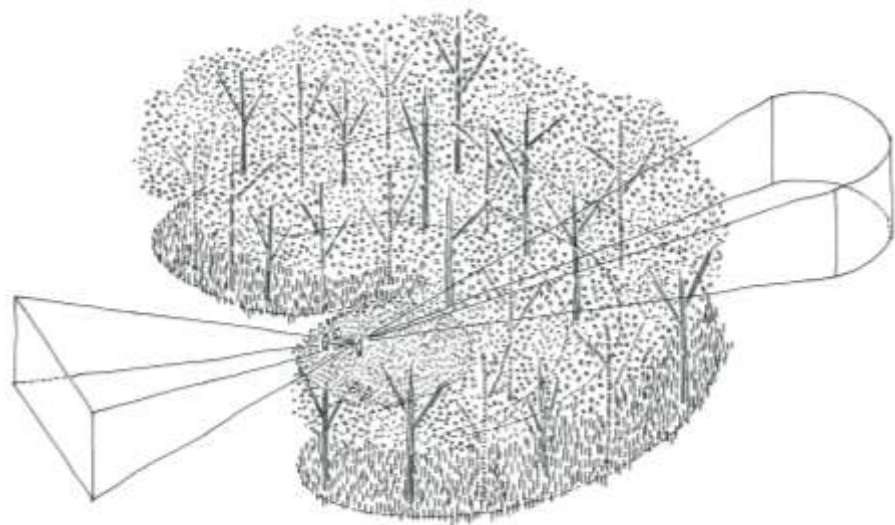
# Alternative public space provision



Cascade of public and collective forest spaces



# *Privately accessible public space*



## **Park meets protected forest structure**

Forest structure creates public space  
elements like seating covers



Urban  
forestry

TU Delft





# Alternative housing development



**Situation 2023**



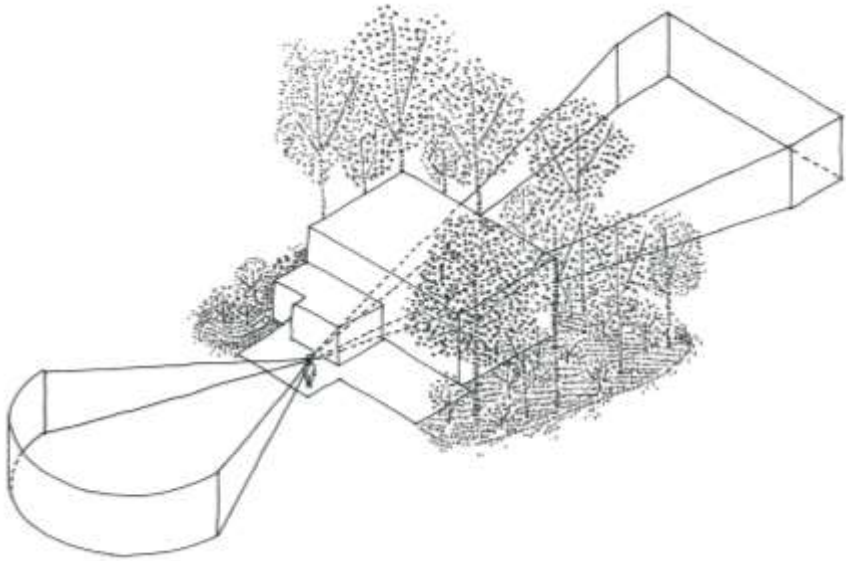
**Proposed situation 2023 | ~25% shrinkage**



Urban  
forestry

TU Delft

# *The forest neighbourhood*



## **Living with the forest**

Forest structure merges with the building into a new hybrid typology

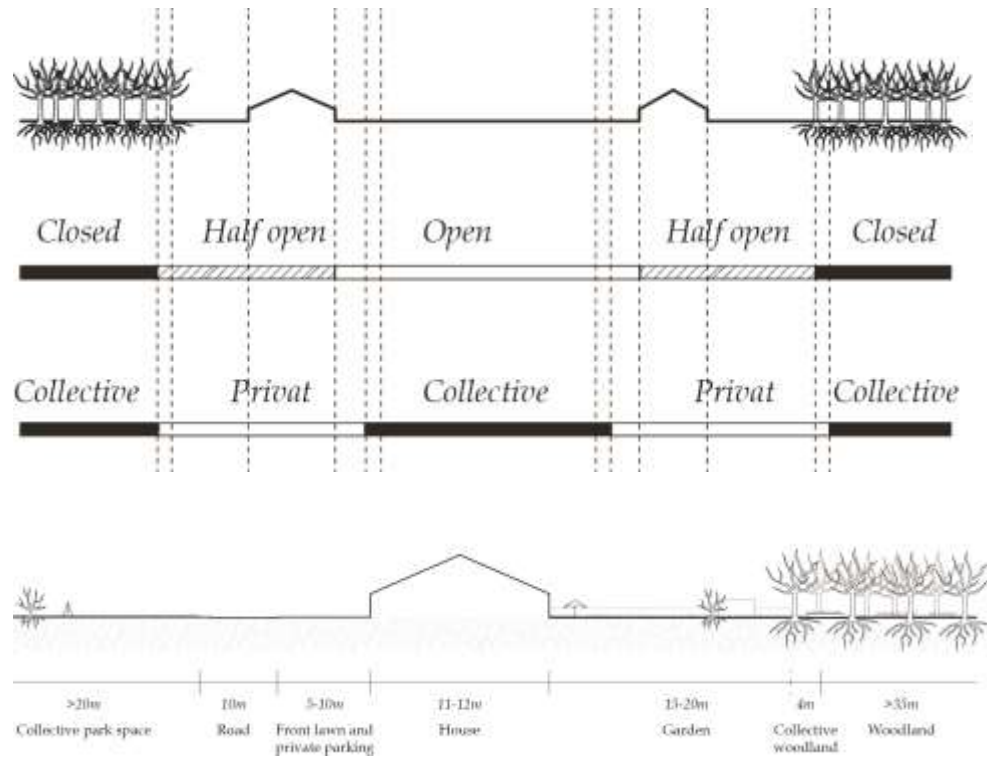


Urban  
forestry

TU Delft



# Reference: Landscape laboratory Sletten



The building blocks of a forest neighbourhood

Image: Google Earth

## *Five starting points for a caring urban forest design practice*

<b>Notions on care</b>	<b>Care considerations</b>	<b>Caring methods and tools</b>
Connectedness, situatedness, future orient.	Position	All forest plan
Liveability, situatedness, latency, attachment	Pattern and Structure	Forest typology
	<b>Use</b>	Structural drawings, immersive drawings
	Responsibility	
	Development	



## *Five starting points for a caring urban forest design practice*

<b>Notions on care</b>	<b>Care considerations</b>	<b>Caring methods and tools</b>
Connectedness, situatedness, future orient.	Position	All forest plan
Liveability, situatedness, latency, attachment	Pattern and Structure	Forest typology
Liveability, attachment, future orientation	<b>Use</b>	Structural drawings, immersive drawings
	Responsibility	
	Development	

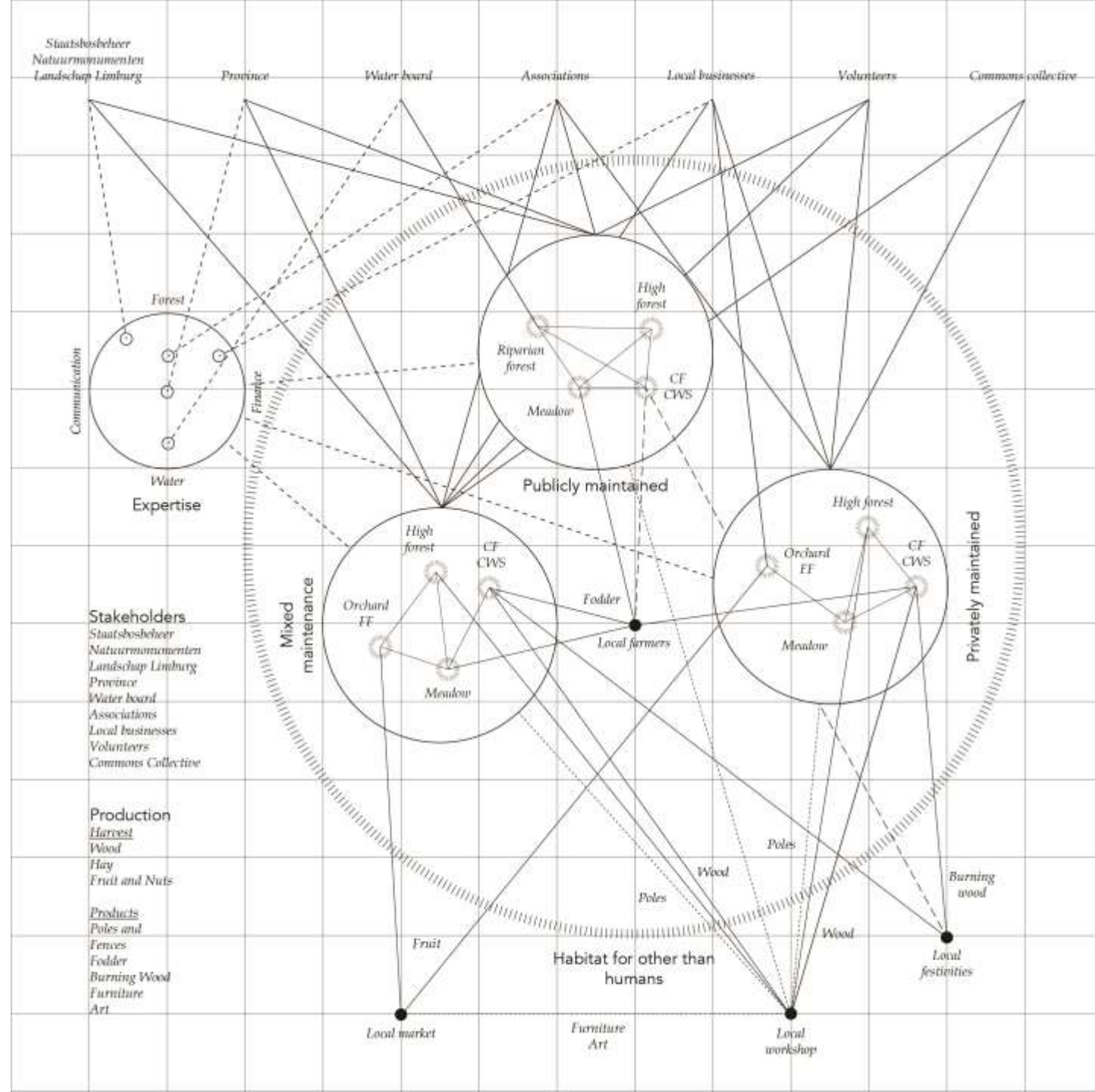


## *Five starting points for a caring urban forest design practice*

<b>Notions on care</b>	<b>Care considerations</b>	<b>Caring methods and tools</b>
Connectedness, situatedness, future orient.	Position	All forest plan
Liveability, situatedness, latency, attachment	Pattern and Structure	Forest typology
Liveability, attachment, future orientation	Use	Structural drawings, immersive drawings
	<b>Responsibility</b>	
	Development	



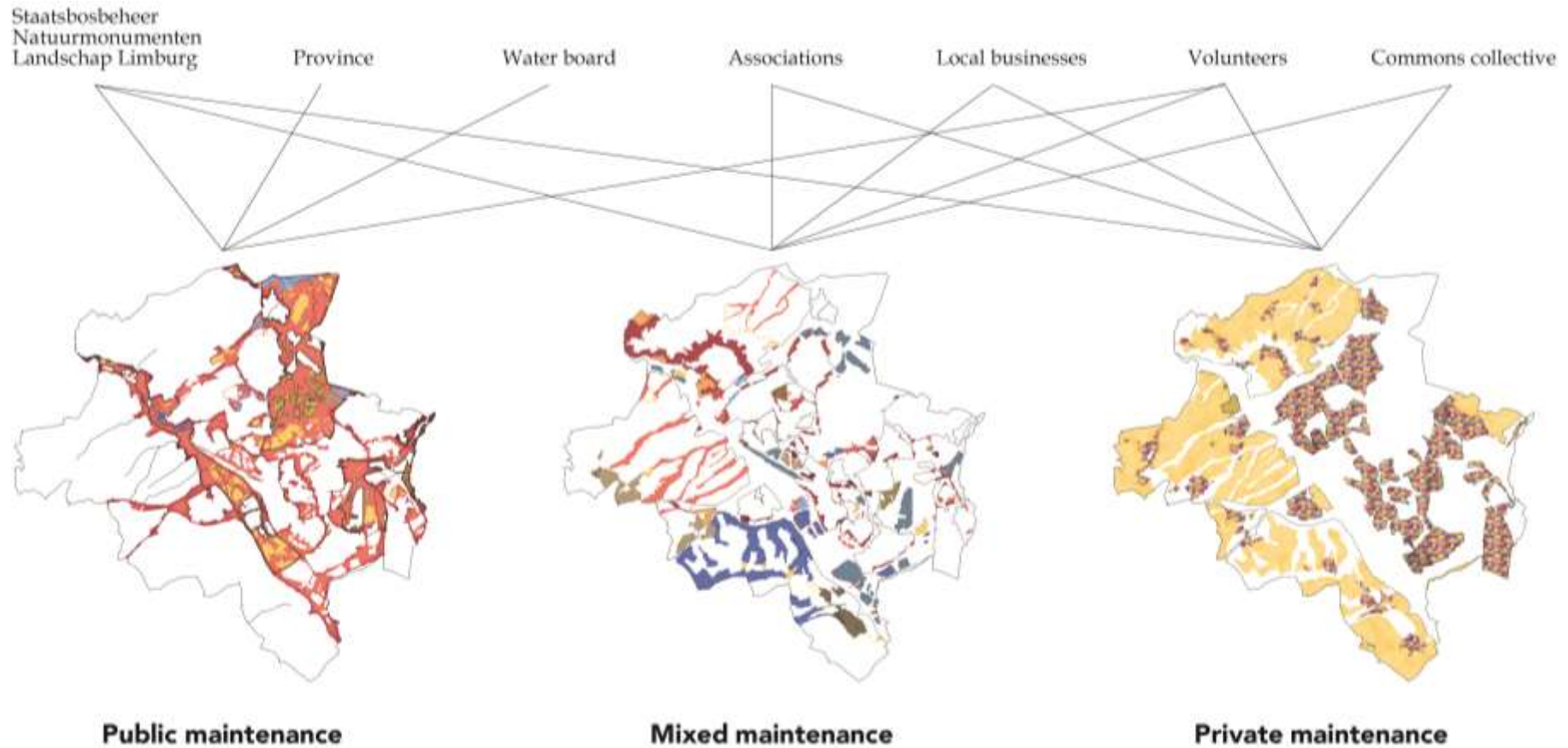
# Redefining ownership, fostering responsibility



Urban  
forestry

TU Delft

# *Interweaving webs of stakeholders with forest type*





## *Reference: Bos op poten*



Building a co-caring station and routine with the neighbourhood

*Picture: Tom van der Wijngaard*

## *Five starting points for a caring urban forest design practice*

<b>Notions on care</b>	<b>Care considerations</b>	<b>Caring methods and tools</b>
Connectedness, situatedness, future orient.	Position	All forest plan
Liveability, situatedness, latency, attachment	Pattern and Structure	Forest typology
Liveability, attachment, future orientation	Use	Structural drawings, immersive drawings
	<b>Responsibility</b>	Forest -stakeholder scheme
	Development	



## *Five starting points for a caring urban forest design practice*

<b>Notions on care</b>	<b>Care considerations</b>	<b>Caring methods and tools</b>
Connectedness, situatedness, future orient.	Position	All forest plan
Liveability, situatedness, latency, attachment	Pattern and Structure	Forest typology
Liveability, attachment, future orientation	Use	Structural drawings, immersive drawings
Connectedness, liveability, future orientation	<b>Responsibility</b>	Forest -stakeholder scheme
	Development	

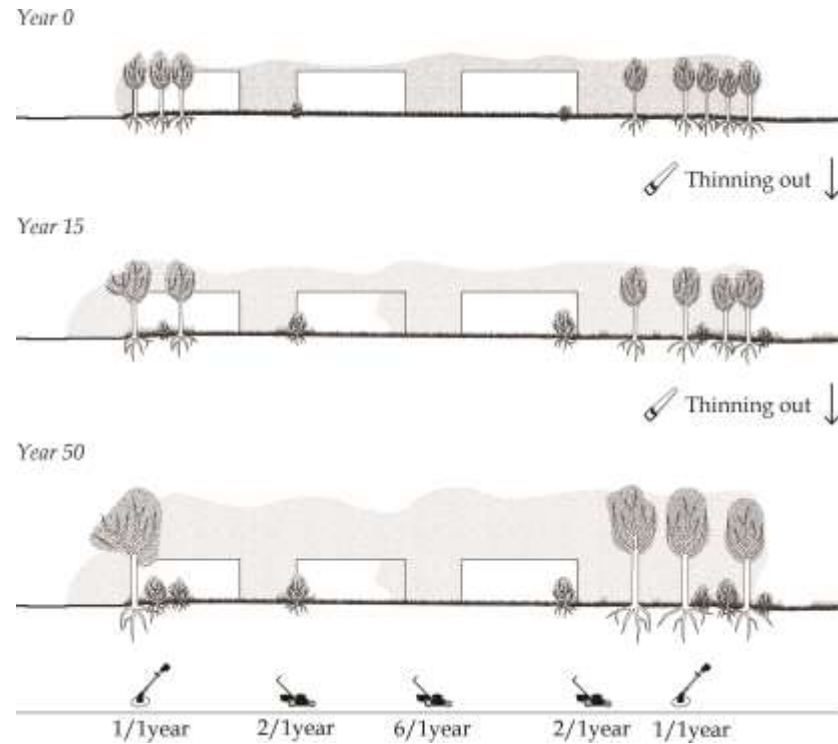


## *Five starting points for a caring urban forest design practice*

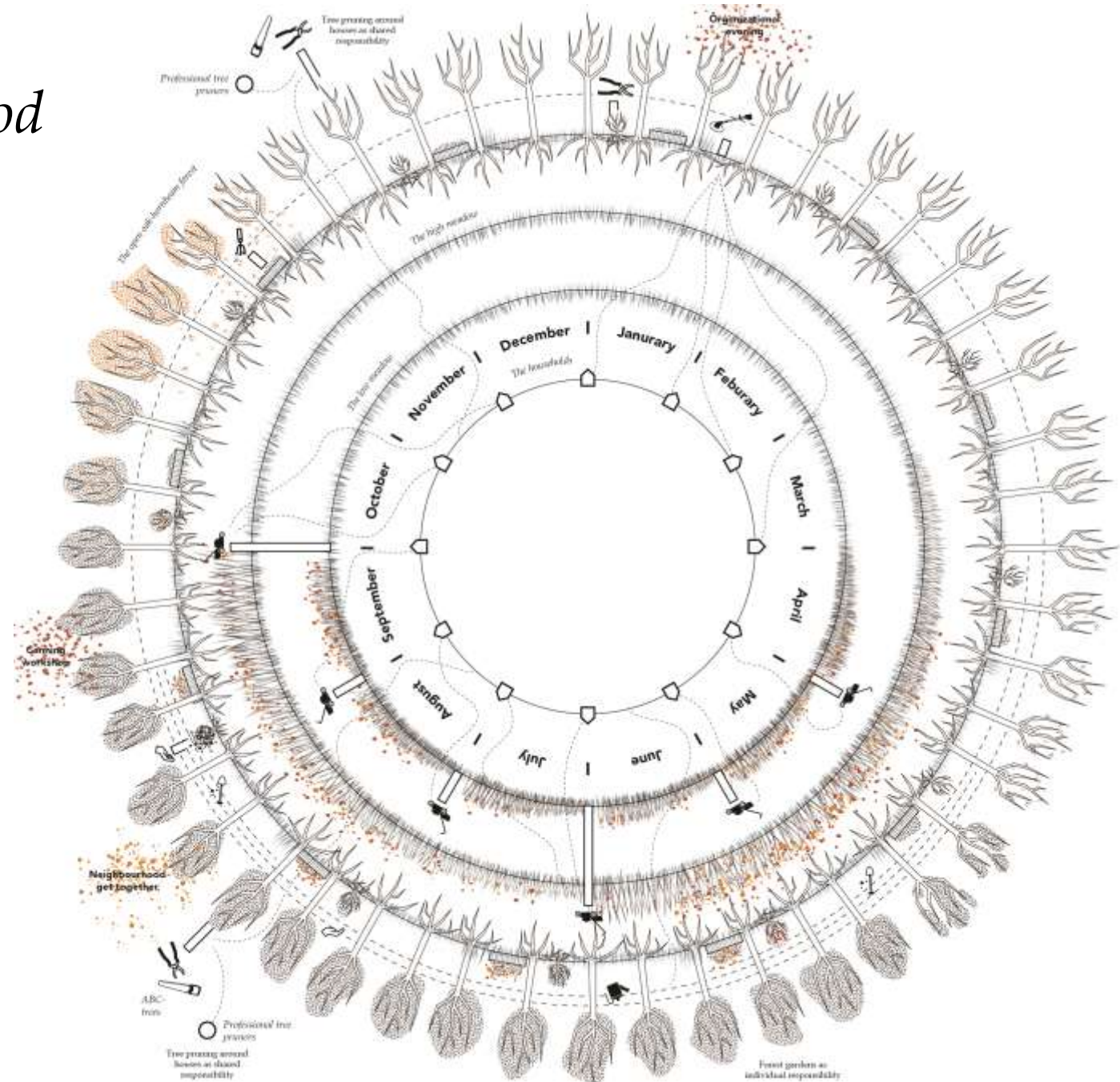
<b>Notions on care</b>	<b>Care considerations</b>	<b>Caring methods and tools</b>
Connectedness, situatedness, future orient.	Position	All forest plan
Liveability, situatedness, latency, attachment	Pattern and Structure	Forest typology
Liveability, attachment, future orientation	Use	Structural drawings, immersive drawings
Connectedness, liveability, future orientation	Responsibility	Forest -stakeholder scheme
	<b>Development</b>	



# Growing a forest neighbourhood



Designing with progressive and circular management schemes

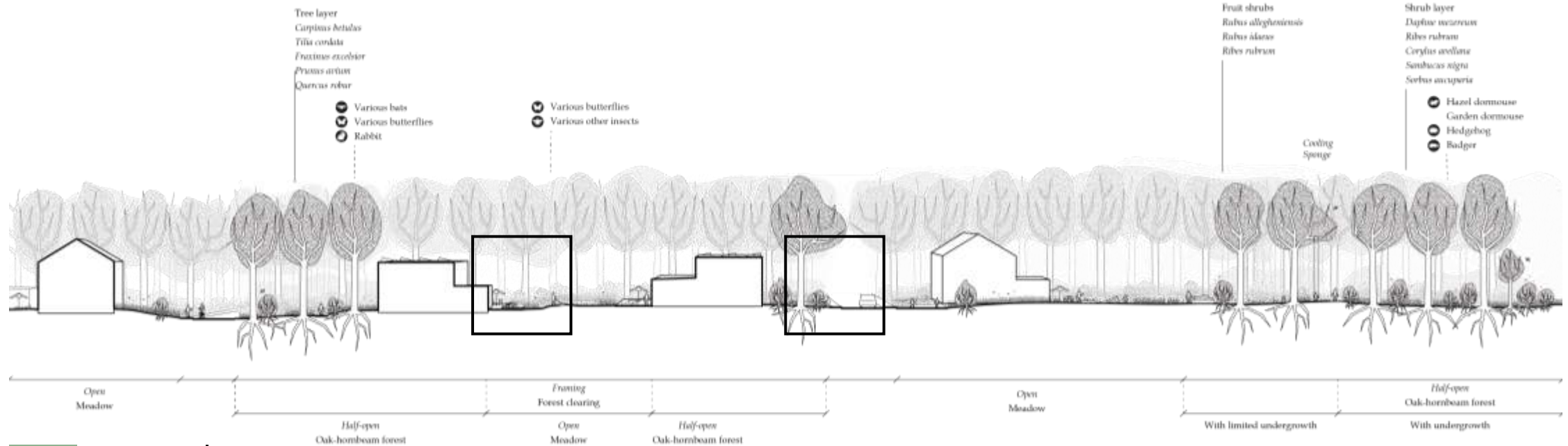
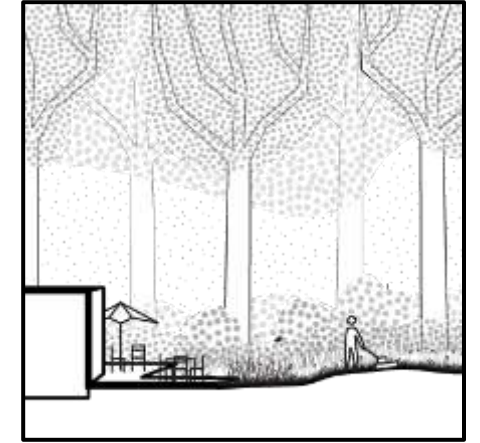
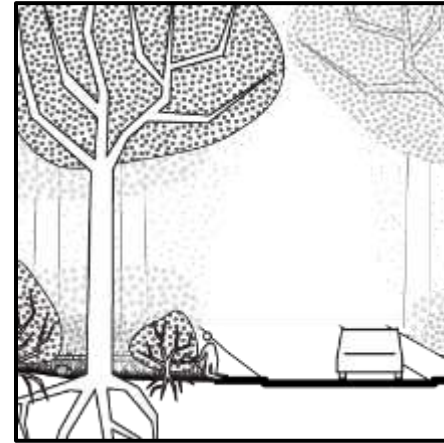


Urban forestry

TU Delft

# Care as an embodied phenomena

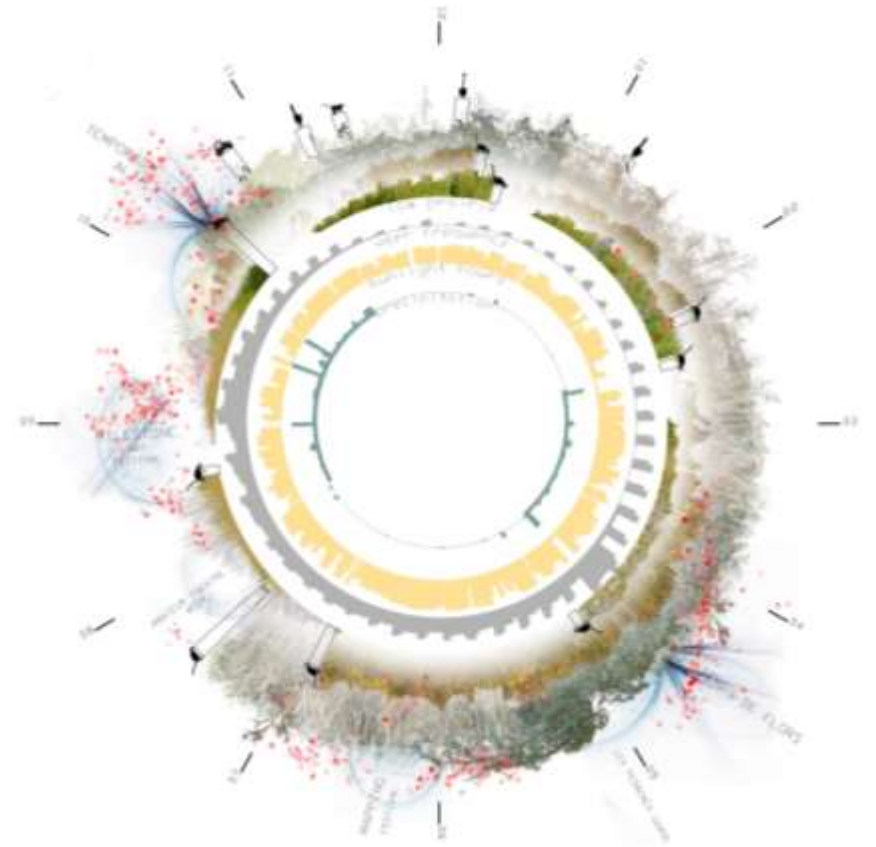
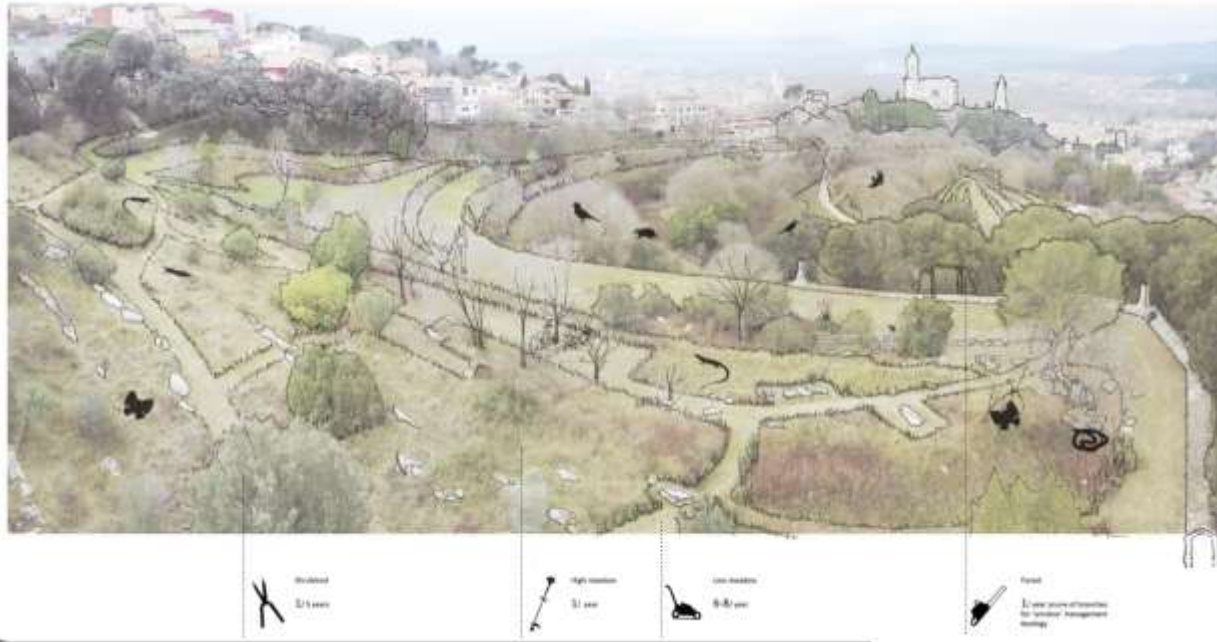
Care as specific and embodied doings



Urban forestry

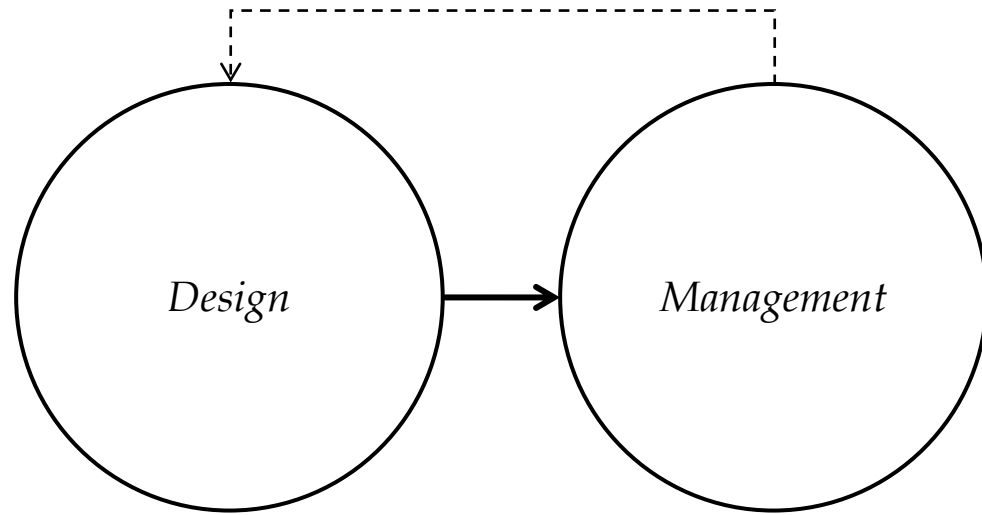
TU Delft

# Reference: Girona's Shores

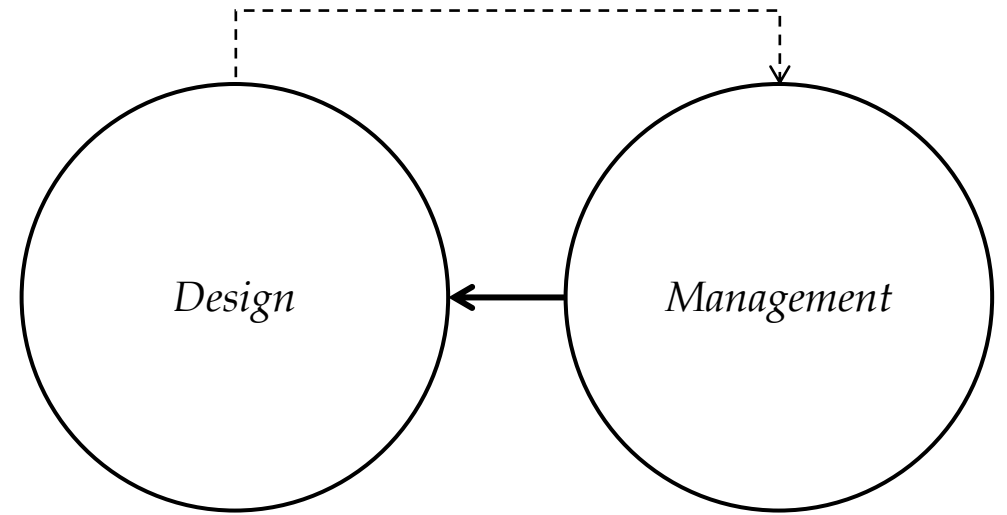


Designing with management

# *Designing with management*



How can we manage what we design?



How can we design what we can manage?



## *Five starting points for a caring urban forest design practice*

<b>Notions on care</b>	<b>Care considerations</b>	<b>Caring methods and tools</b>
Connectedness, situatedness, future orient.	Position	All forest plan
Liveability, situatedness, latency, attachment	Pattern and Structure	Forest typology
Liveability, attachment, future orientation	Use	Structural drawings, immersive drawings
Connectedness, liveability, future orientation	Responsibility	Forest -stakeholder scheme
	<b>Development</b>	Temporal management schemes (circ. and prog.)



## *Five starting points for a caring urban forest design practice*

<b>Notions on care</b>	<b>Care considerations</b>	<b>Caring methods and tools</b>
Connectedness, situatedness, future orient.	Position	All forest plan
Liveability, situatedness, latency, attachment	Pattern and Structure	Forest typology
Liveability, attachment, future orientation	Use	Structural drawings, immersive drawings
Connectedness, liveability, future orientation	Responsibility	Forest -stakeholder scheme
Connectedness, latency, attachment	<b>Development</b>	Temporal management schemes (circ. and prog.)



# *Reflecting on starting points*

Position

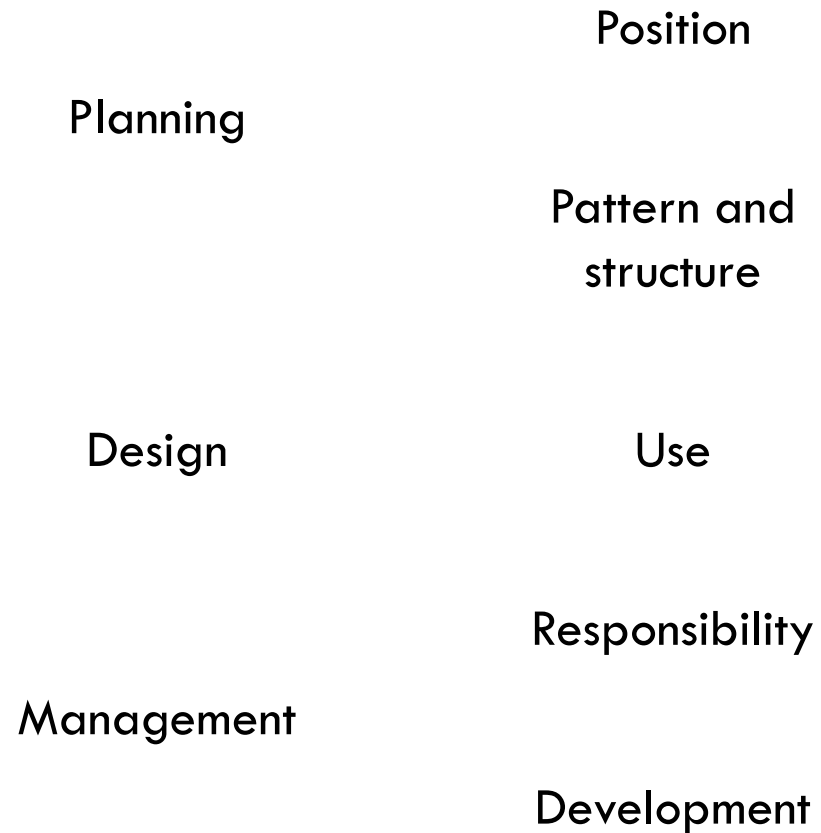
Pattern and  
structure

Use

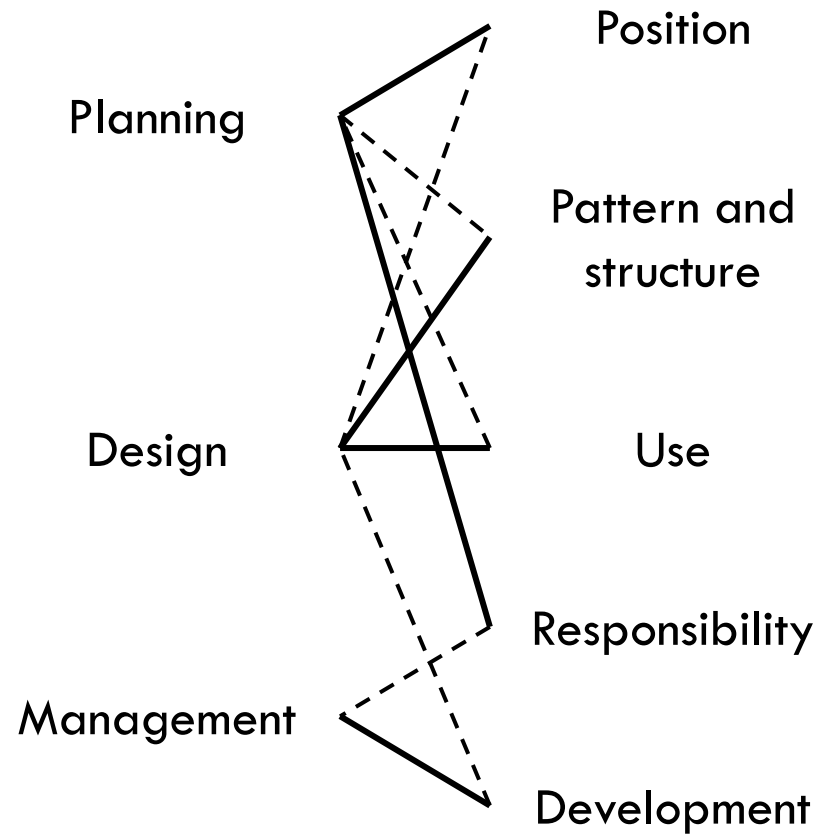
Responsibility

Development

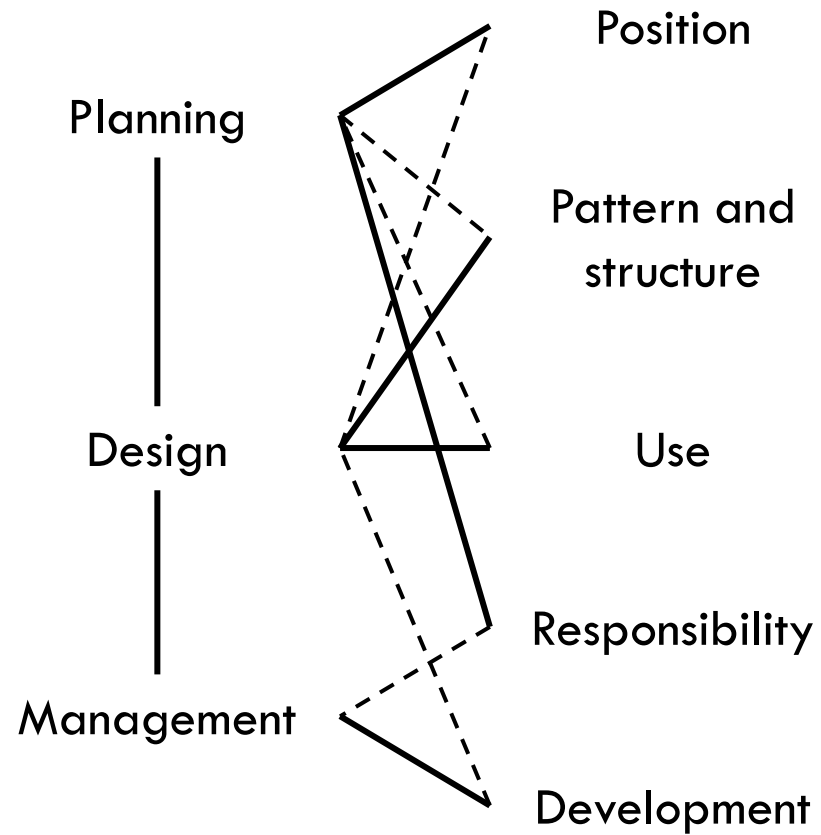
# *Reflecting on starting points*



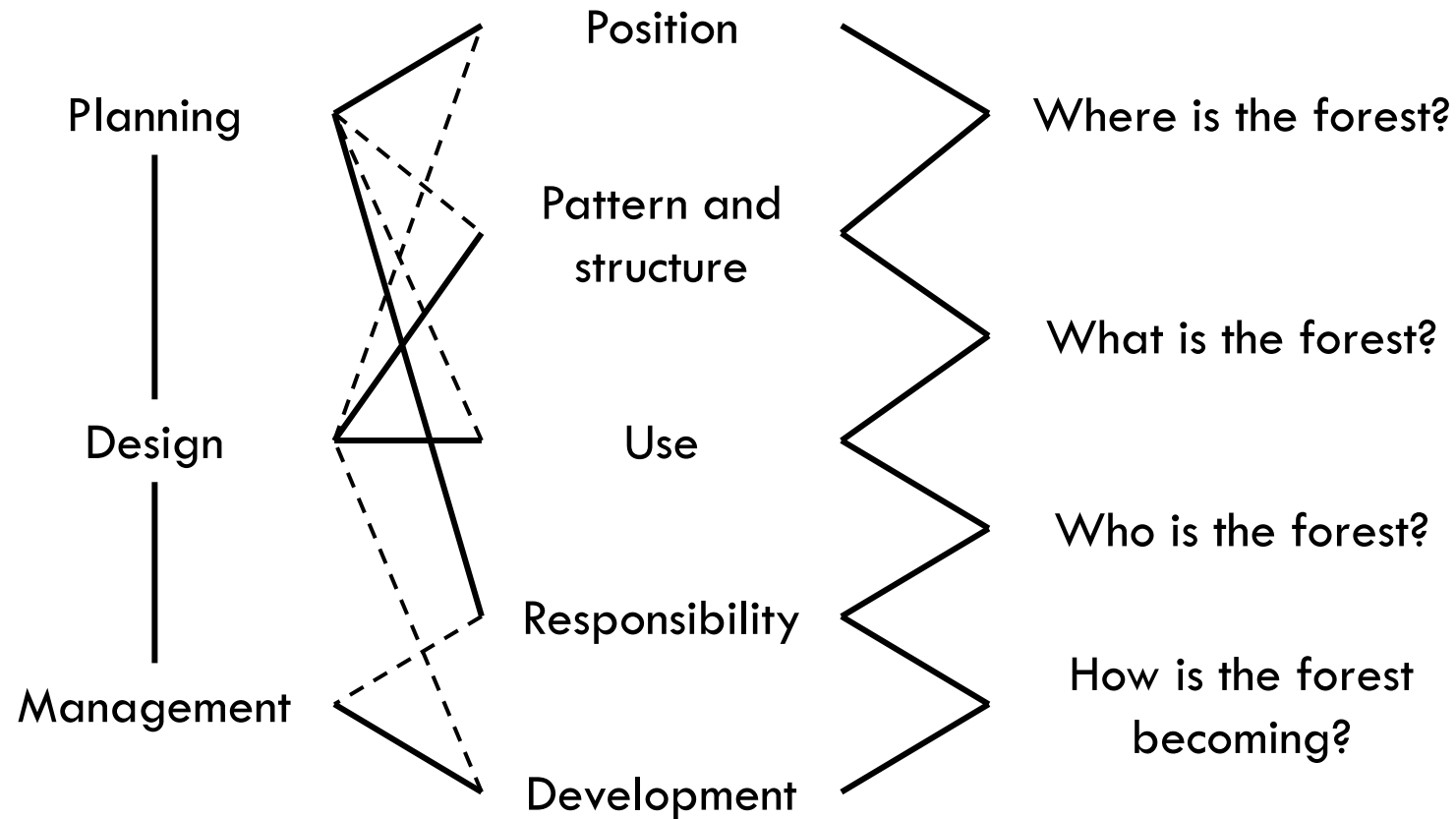
# *Reflecting on starting points*



# *Reflecting on starting points*



# Reflecting on starting points



# Reflecting on starting points

