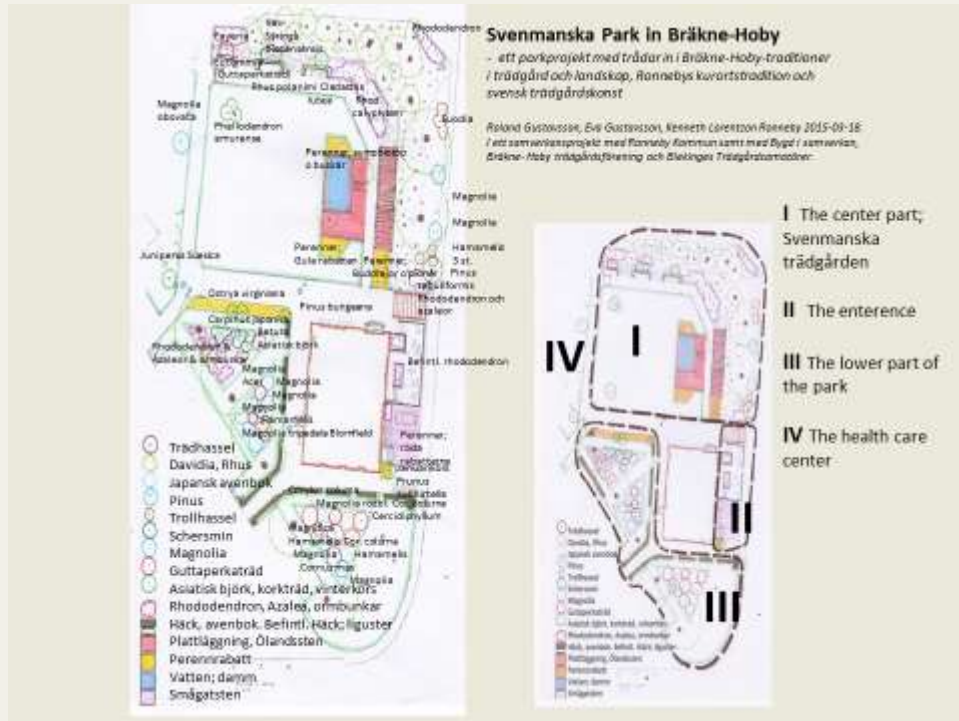
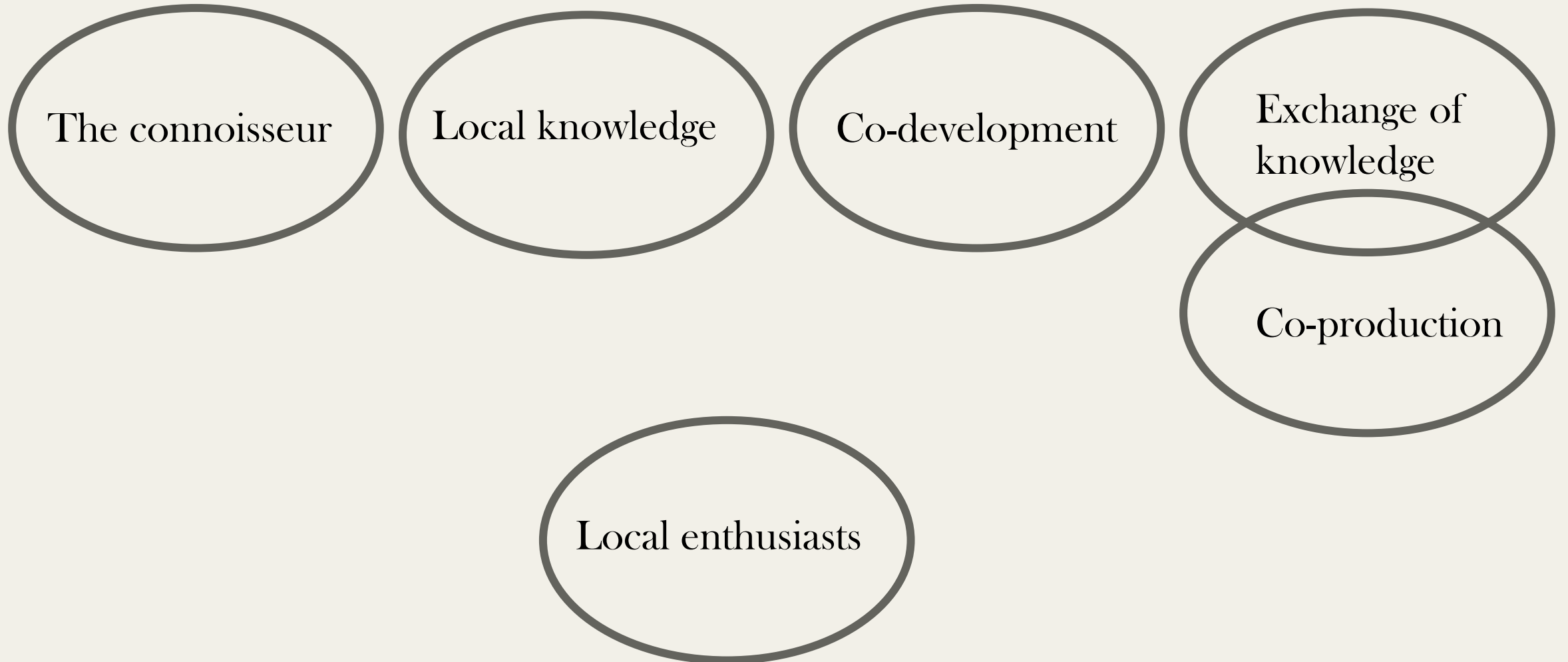


The Connoisseur method – an alternative strategy for managing green spaces in peri-urban settings





Co-management or citizen led management? - the role of the local enthusiasts

Problem definition and outline

Changed societal demands on local associations, their activities and engagement

The importance of **local associations** in smaller communities

ELC - local landscapes, **local knowledge**, connoisseurs

The connoisseurs and the **connoisseur method**

Alternative strategies for managing green spaces in small scale peri-urban projects.
- the locals society's role and the municipality's role

The Svenmanska park in Bräkne-Hoby

26 September 2015 it
was time to re-inaugurate
the Svenmanska parken

The becoming of the park, the
developing, and what it means
for the region

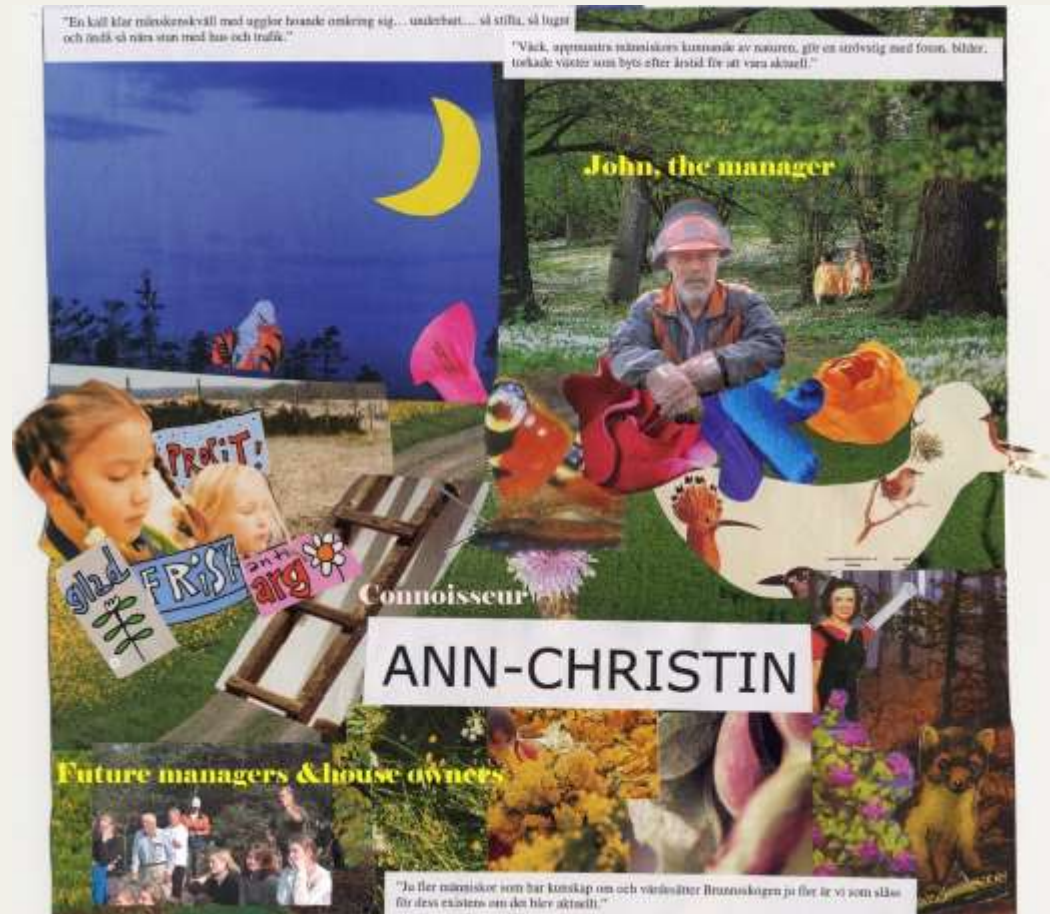


Landscape connoisseurs

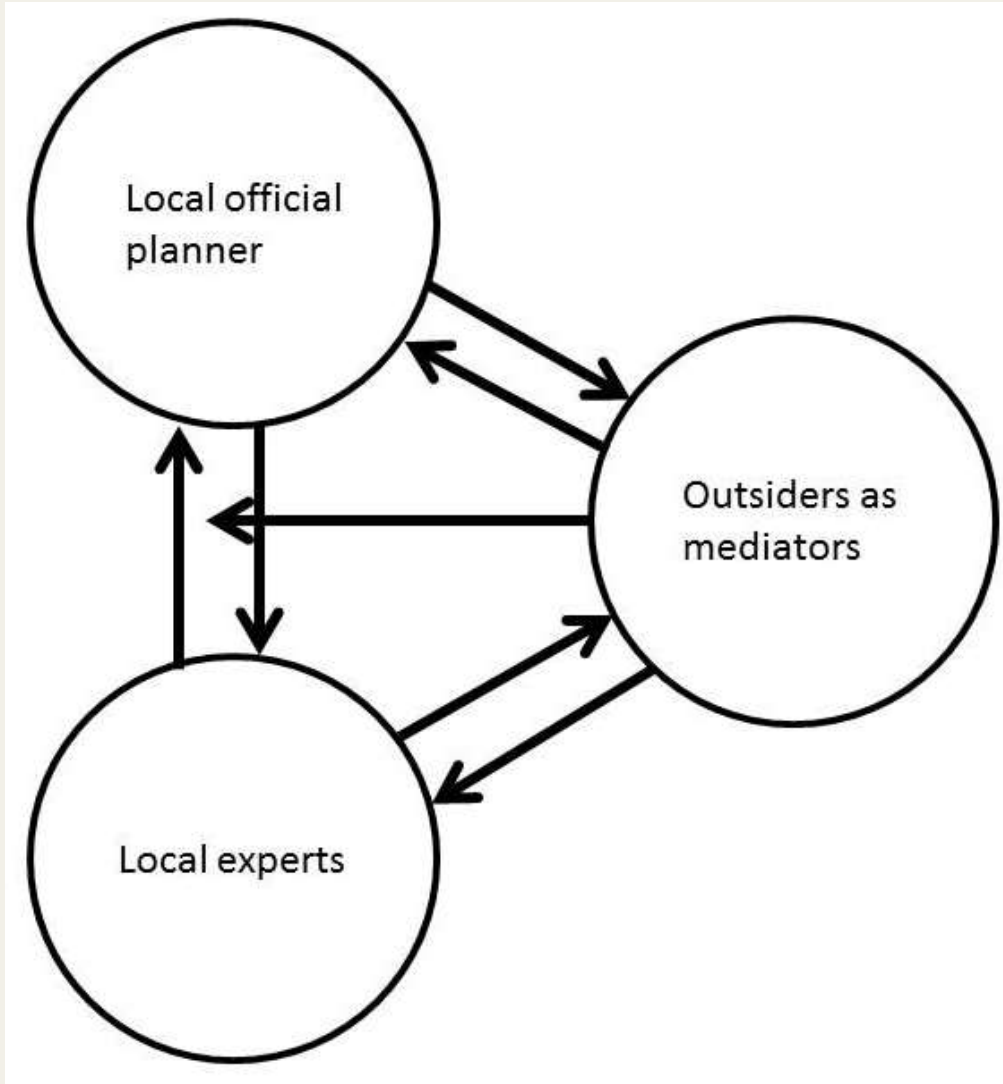


Landscape knowers

The connoisseur method, a way of working with collaboration in different scales



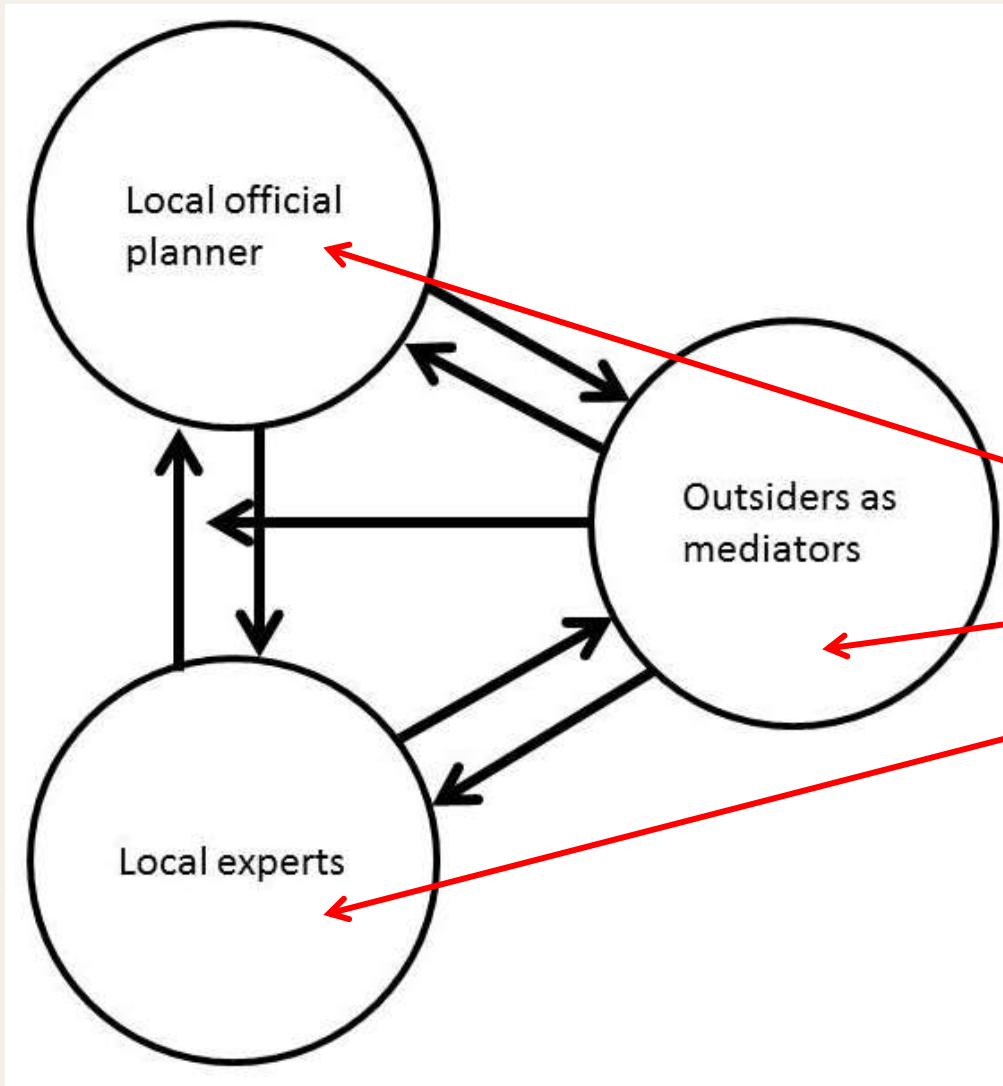
A method for *long-term* participation in planning and management



Planning model illustrating the dialogue between involved actors

TIME
PLACE
ENGAGEMENT

A method for *long-term* participation in planning and management



Planning model illustrating the dialogue between:

- Project coordinator
- Process leader and
- Local experts as connoisseurs

Local experts, **the connoisseurs**

The term connoisseur is introduced into a peri-urban landscape planning context to designate a knowledgeable person (Arler 2000).

Connaître.

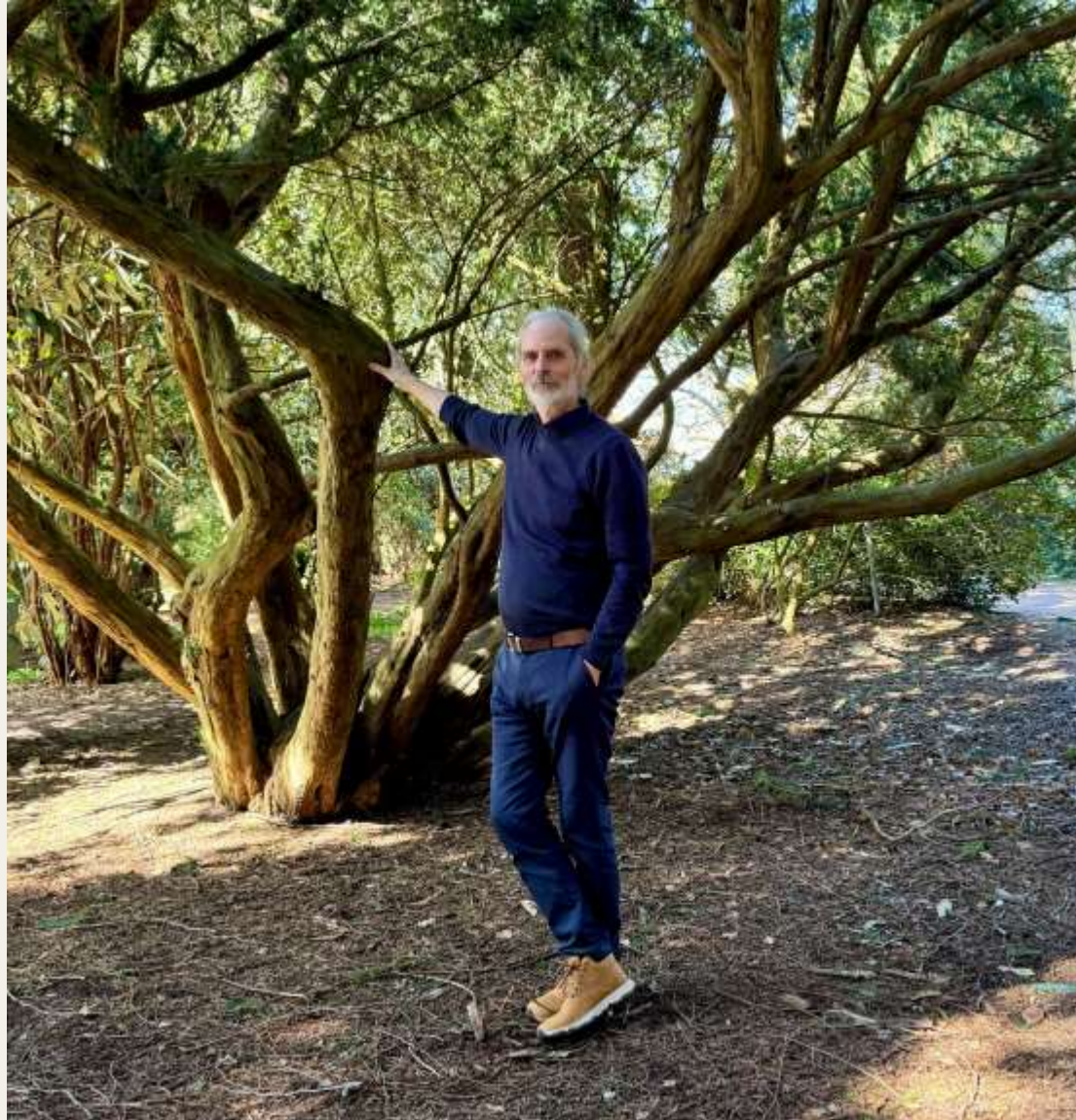
Wine and music

Everyday users of the landscape: local residents, summerhouse owners, people working there, or people passing through on regular basis.

Strong embodied relation to a place (Tuan 1974) used in the process since 1975.

The **connoisseur** is a person who has a specific interest in the area, who knows how the area is used all year around etc. Like refined wine connoisseurs, they are experts in their area, with their particular perspective.

(Arler 2000)



The Svenmanska park in Bräkne-Hoby





The Svenmanska park
in Bräkne-Hoby

Cultural center
in Bräkne-
Hoby

2014 local
associations
moved in



The Garden
Society of Bräkne-
Hoby

Wet feet!

Approached the
municipality



3 years Partnership

The municipality of Ronneby
SLU

Bygd i samverkan and more
local associations

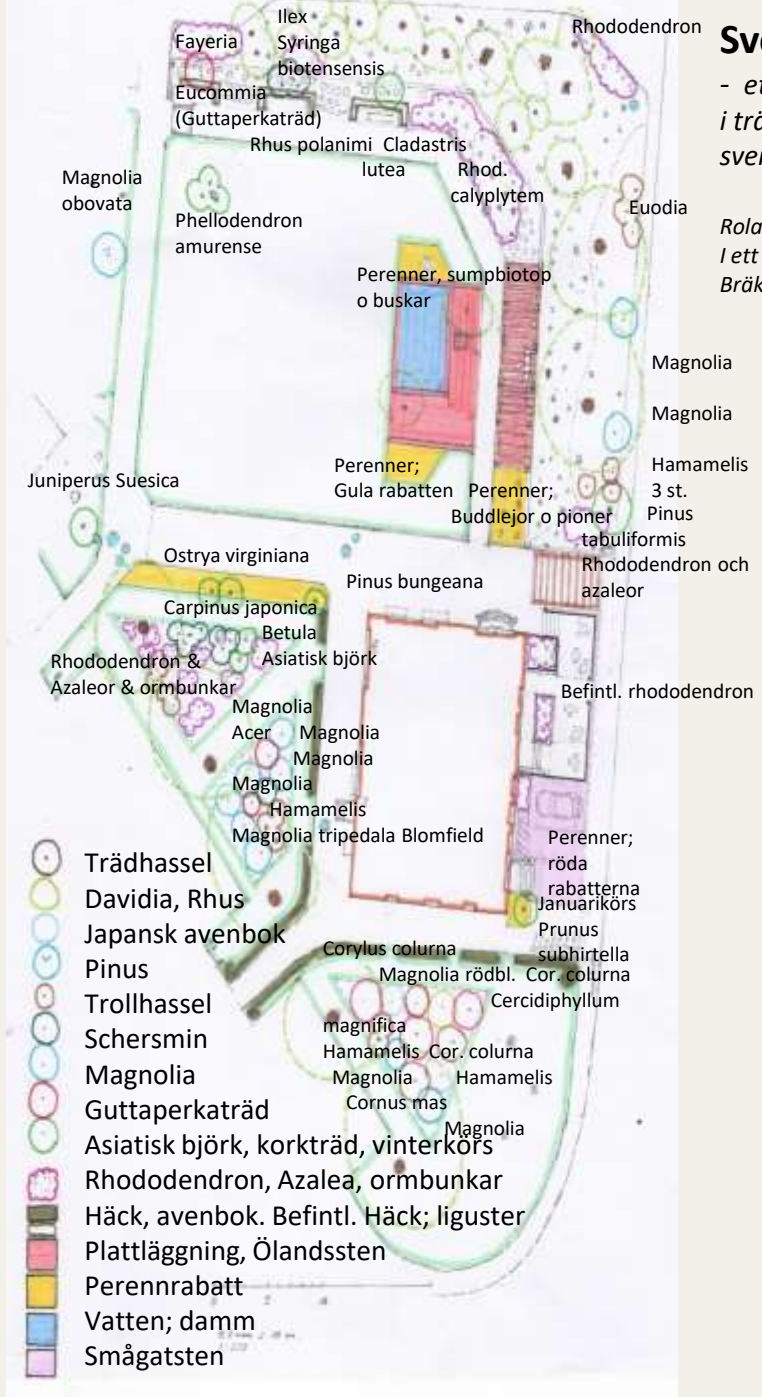


!
RISK FÖR
Trafikolycka med
maskiner eller
utrustning
→

P
♿

P
→
BESÖKANDE
KULTURHUS

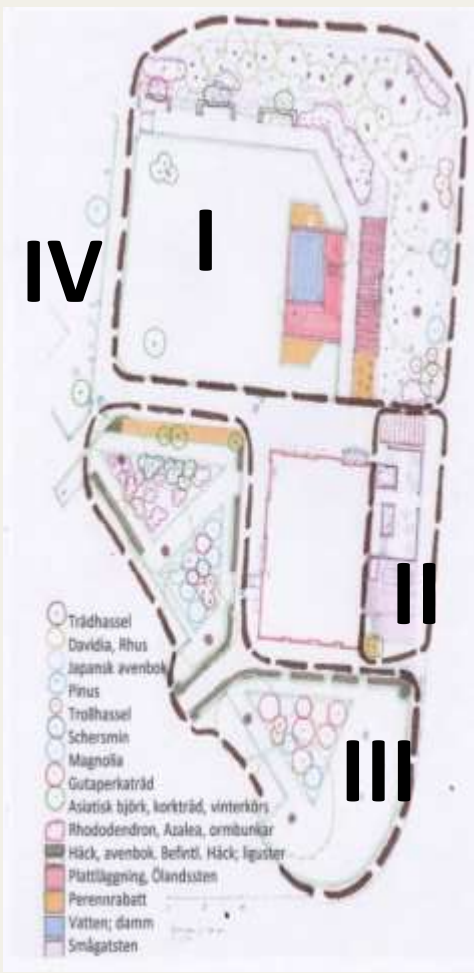




Svenmanska Park in Bräkne-Hoby

- ett parkprojekt med trädar in i Bräkne-Hoby-traditioner i trädgård och landskap, Ronnebys kurortstradition och svensk trädgårdskonst

Roland Gustavsson, Eva Gustavsson, Kenneth Lorentzon Ronneby 2015-03-18.
 I ett samverkansprojekt med Ronneby Kommun samt med Bygd i samverkan, Bräkne- Hoby trädgårdsförening och Blekinges Trädgårdsamatörer.



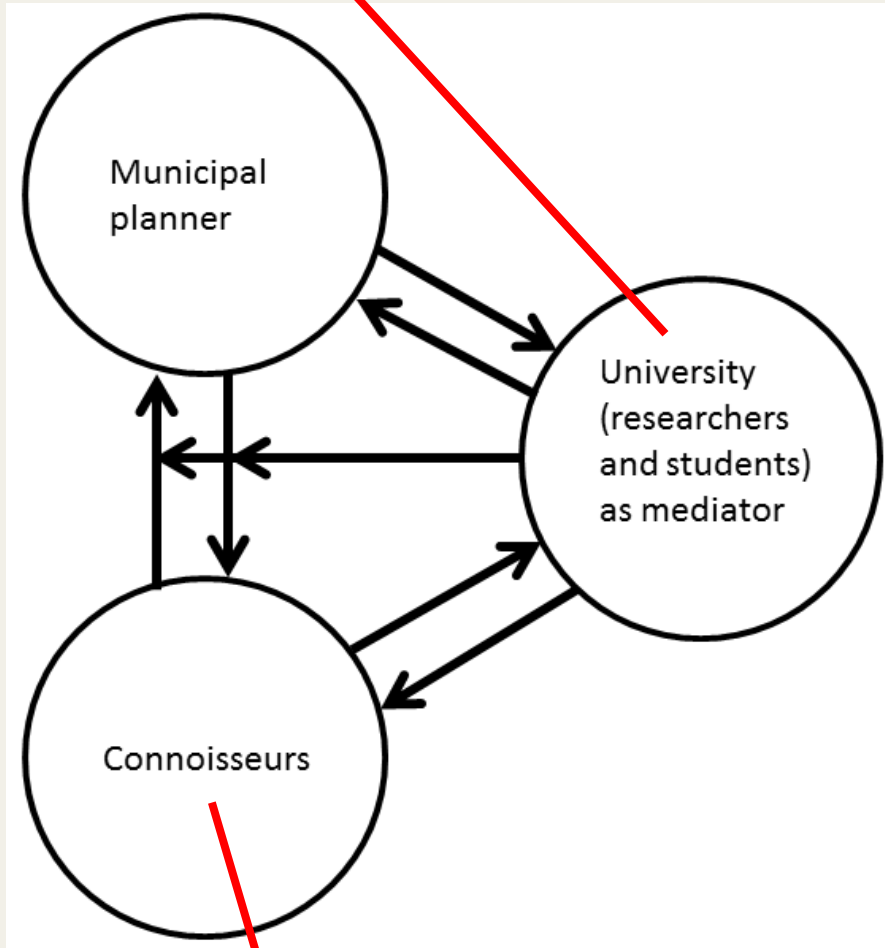
I The center part;
 Svenmanska trädgården

II The entrance

III The lower part of
 the park

IV The health care
 center

SLU, Eva, Roland and Kenneth



The Garden Society

The Svenmanska park

The partnership ended but the park manager was charmed by their design.

Everything was supposed to be finalized in 2015 though...













Organization

Maintenance - **The fikagroup!** Garden society of Bräkne-Hoby, the garden amateurs Blekingekretsen and Bygd i samverkan

The municipality - Beautification money and assistance every Monday!







FIKA

PHYSICAL
WORK

SOCIAL
CONTACT

CONTRIBUTE
TO THE
LOCAL
SOCIETY



Local enthusiasts in pri-urban place-making

There are two perspectives on local enthusiasts engagement

- local engagement for **providing service** where such is deficient
- civil society's ability to **create a community**, to strengthen other citizens self-esteem and strengthen their local identity

Roland and Eva contribute with

- continuity
- knowledge on park and garden design as well as local traditions and local plant material
- experience from previous collaboration i.e. the green structure plan

Local enthusiasts in Svenmanska park

”To light up the rural” – Emelie Johansson and Maja Ivansson,
masterstudent, Sustainable Urban Management (SLU)

Purpose:

to understand the concept of 'driving spirits', their role in sustainable rural development, and how they can be supported by municipal organisations.

Driving spirits

Definition:

deeply dedicated

works nonprofit

have the ability to engage others

Driving spirits

Definition:

deeply dedicated

works nonprofit

have the ability to engage others

Driven by:

improving spaces

impossible tasks

make others happy

Driving spirits

Definition:

deeply dedicated

works nonprofit

have the ability to engage others

Driven by:

improving spaces

impossible tasks

make others happy

Achieving:

a thriving countryside with widespread
social cohesion.

Municipal solutions

Beutification money in Ronneby municipality

'Citizen budget' in Eslövs municipality

Adapt a knowledge-giving role

Village council



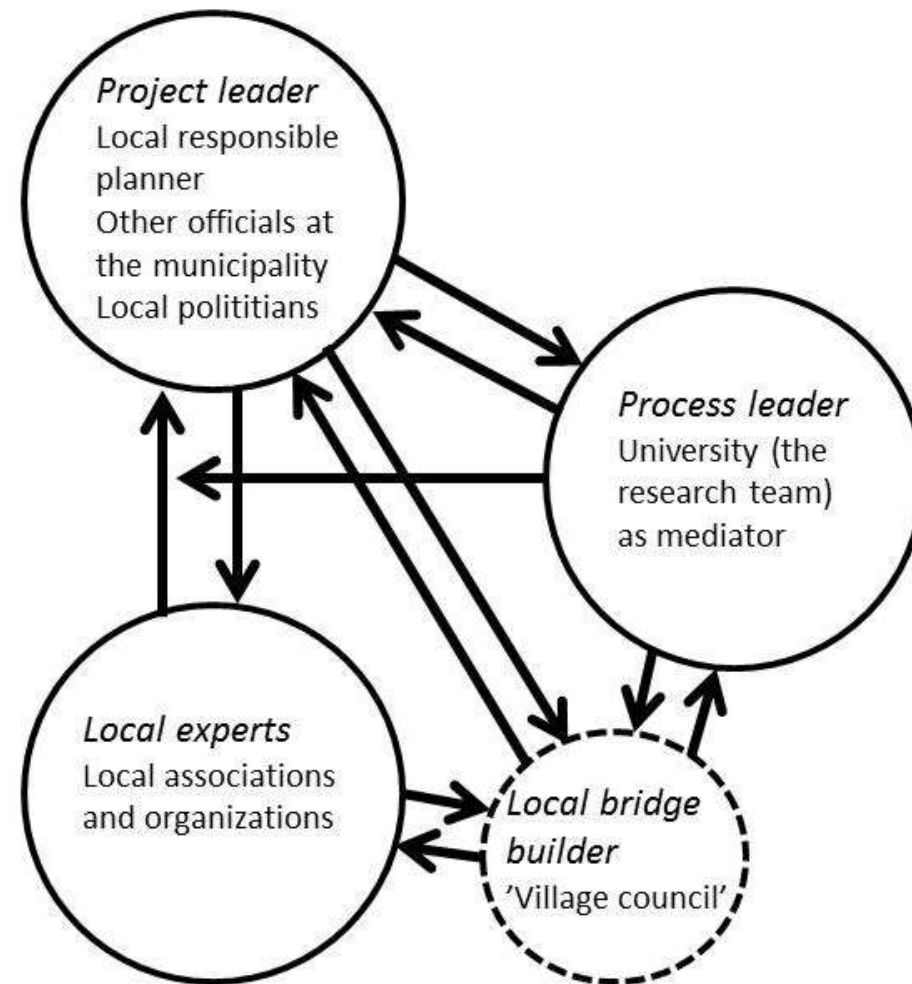
Municipal solutions

Beutification money in Ronneby municipality

'Citizen budget' in Eslövs municipality

Adapt a knowledge-giving role

Village council



Driving spirits = connoisseurs?

Had local knowledge

Knew everyone in their community

Personal connections

A complement to municipal organisations



Driving spirits = connoisseurs?

Had local knowledge

Knew everyone in their community

Personal connections

A complement to municipal organisations

To be sustainable:

Mutual trust and personal connection

Realise the positive impact driving spirits have



