



WELCOME TO OUR FIRST WECAN-NEWSLETTER!



Artwork created using Canva AI, from the prompt “researcher exploring the outdoors”

WECAN - the “Worldwide Environmental Communication Alumn* Network” - is a network created to connect current and former students of the masters’ program Environmental Communication and Management (short ECM) at SLU. Our goal is to establish a platform for students and alumni to exchange knowledge and inspiration about environmental communication (EC) as well as to network. The events and communication channels of WECAN will serve as a platform to communicate/discuss EC-related questions such as: What are the newest developments in our field? What are the work opportunities after the ECM program? What are your old study colleagues doing now? What are interesting opportunities for you to develop yourself or your career in EC?

WECAN was launched in 2018 and revitalized in the autumn semester of 2023 after some period of inactivity. The new board is now working to rebuild the network and bring together students and alumni of the ECM program with new events. In that sense, let us introduce the new board members of WECAN on the next page.

CONNECT ON SOCIALS!



[wecan_alumni](https://www.instagram.com/wecan_alumni)



[WECAN - Worldwide Environmental Communication Alumn* Network](#)

WEBPAGE



<https://www.slu.se/wecan>

CONTACT

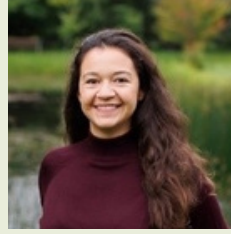


wecanslu@gmail.com

MEET THE BOARD MEMBERS



Miron M. Arljung
Research Assistant, EC division, SLU.
Geographer and environmental communicator. You can find me out there exploring the world, playing music or at the usual tabletop rpg/boardgame night with friends.



Ana Maria Mutis
2nd-year student, SLU, ECM
32-year-old Colombian re-discovering my love for communication! After working in the advertising field for quite a long time, I'm thrilled to have found a new way to understand and make use of communication.



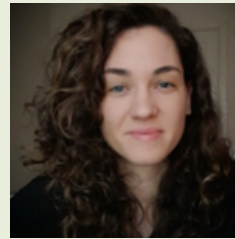
Hanna Tabea Mönning
2nd-year student, SLU, ECM
Originally from Germany. I want to use the knowledge from my studies to help create a more sustainable use of resources and support communication between stakeholders to find solutions for environmental challenges.



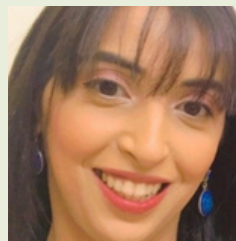
Seyifunmi Adebote
2nd-year student, SLU, ECM
When not studying, doing WECAN stuff or recreationally writing; Seyifunmi loves to run, play Scrabble/Sudoku, waste time on LinkedIn/Twitter, listen to podcasts/reggae music and sleep!



Alejandra Figueredo
Research Assistant, EC division, SLU.
I've worked both in government, NGOs and with research. I enjoy a good cup of Colombian coffee and am a geek of every series you can imagine. My favorite things from Sweden are fika and the forest.



Daniela Kreber
Research Assistant, EC division
A sea enthusiast, grounded in Environmental Sciences, fueled by a passion for exploring human-nature relations through phenomenology and posthumanism.



Arwa Abutaleb
2nd-year student, SLU, ECM
Having worked in the industrial sector with a background in microbiology and biotech, I'm committed to contributing valuable research and insights into environmental aspects and promoting a sustainable future.



Merle Gemke
2nd-year student, SLU, ECM
I'm from Germany and 24 years old, Like some theories in ECM turned my understanding of the world upside down, I enjoy to do that myself in my free time with pole dance and aerial hoop.



Vera Brandes
2nd-year student, SLU, ECM
EC complements my interdisciplinary environmental science background and sparks my wonder about the world. Otherwise, I love all things creative, with knitting being my newest obsession.

February 2024

NEWS

Great news from EC division

How should we communicate to create a more sustainable society? The Mistra Environmental Communication research programme has been investigating this question for four years. **In January 2024, the project will enter a new phase having just been granted SEK 54 million over four years** to build on the work carried out in the first phase between 2020-2023.

[READ MORE >>](#)

Invitation from MISTRA EC

MISTRA EC organizers invite you to join a session during the annual program days where you can learn more about and discuss the latest research in environmental communication! To “read more”, make sure to become our [FB group](#) member.

[READ MORE >>](#)

[REGISTER>>](#)

Former ECM-ers

Two of the former ECM students have been listed as one of **Aktuell Hållbarhet's sustainability talents shaping the future!** Congratulations to Ash Farber and Anna Lönnemar!

[READ MORE >>](#)

What's going on in WECAN?

We have become members of the **International Environmental Communication Association (IECA)** which brings great new opportunities for our board to network and learn. We plan to take part in their 24-hour Virtual Expo Networking event. Interested in joining? Read more about the event and how to register below!



[READ MORE >>](#)

We are starting with **WECAN Creative!** A series of events aimed at creating an informal and safe space for conversations, discussion, and other forms of expression about environmental topics. One of our first events “**Threads of Thought**” combines knitting and discussing. Visit our [Facebook page](#) to find the details!



February 2024

RESEARCH

Project in focus



The Public Perceptions hub (led by Klara Fischer at SLU and Glenn Stone at Washington University in St Louis) explores how gene editing technologies are received in society, with a focus on emerging media debates. A key component of the hub is also the production of the podcast A CRISPR bite. Click on the heading to read more about the project and the podcast!

[READ MORE >>](#)

Selected Division Publications

Click to read!

[How justice shapes transition governance - a discourse analysis of Swedish policy debates](#)

[Between authority and argumentation: facilitators' use of power in collaborative governance.](#)

[The quest for "nature" in selfies: how platforms shape nature/society relationships](#)

[Google Search and the creation of ignorance: The case of the climate crisis](#)

[In-store apparel shopping and sustainability communication: The interplay between attitudes and context.](#)

[Dagens samtalsklimat är ett hot mot omställningen. Aktuell Hållbarhet, 08/05.](#)

[\(Un\)sustainable everyday practices Sociomateriality shaping sustainability in an Urban district](#)

[The knowledge politics of genome editing in Africa.](#)

[Performing the Circular economy: How an ambiguous discourse is managed and maintained through meetings](#)

[Storytelling to save the planet: who gets to say what is sustainable, who tells the stories, and who should listen and change?](#)

[FIND MORE PUBLICATIONS >>](#)

[DROP YOUR SUGGESTIONS >>](#)