



SCIENCE AND
EDUCATION **FOR**
SUSTAINABLE
LIFE



Get started with your data management plan!

Welcome to a webinar with Data Management Support (DMS)
Hanna Lindroos, Jürg Brendan Logue, Hanna Östholm, 2021-12-15



This webinar is recorded to be made available on SLU play

- You may turn your camera on if you wish, but please keep your microphone turned off.
- Ask questions in the chat, and we will get to them during the last 15 minutes of the webinar.



A basic attendance survey will be performed, using Mentimeter

- Answering the Menti-questions is voluntary
- Mentimeter AB will store your network address for two weeks. As a visitor, you never have to give your e-mail-address to Mentimeter
- DMS will only show and save the aggregated results, disclosing no names

Who is attending the webinar?

- Web page: menti.com
- Pass code: 3363 4771 (*also in chat*)

Our questions:

1. What kind of employment do you have?
2. Have you received a research grant?





Contents

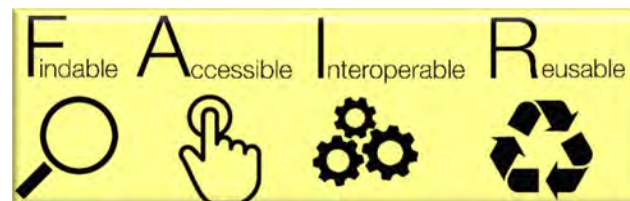
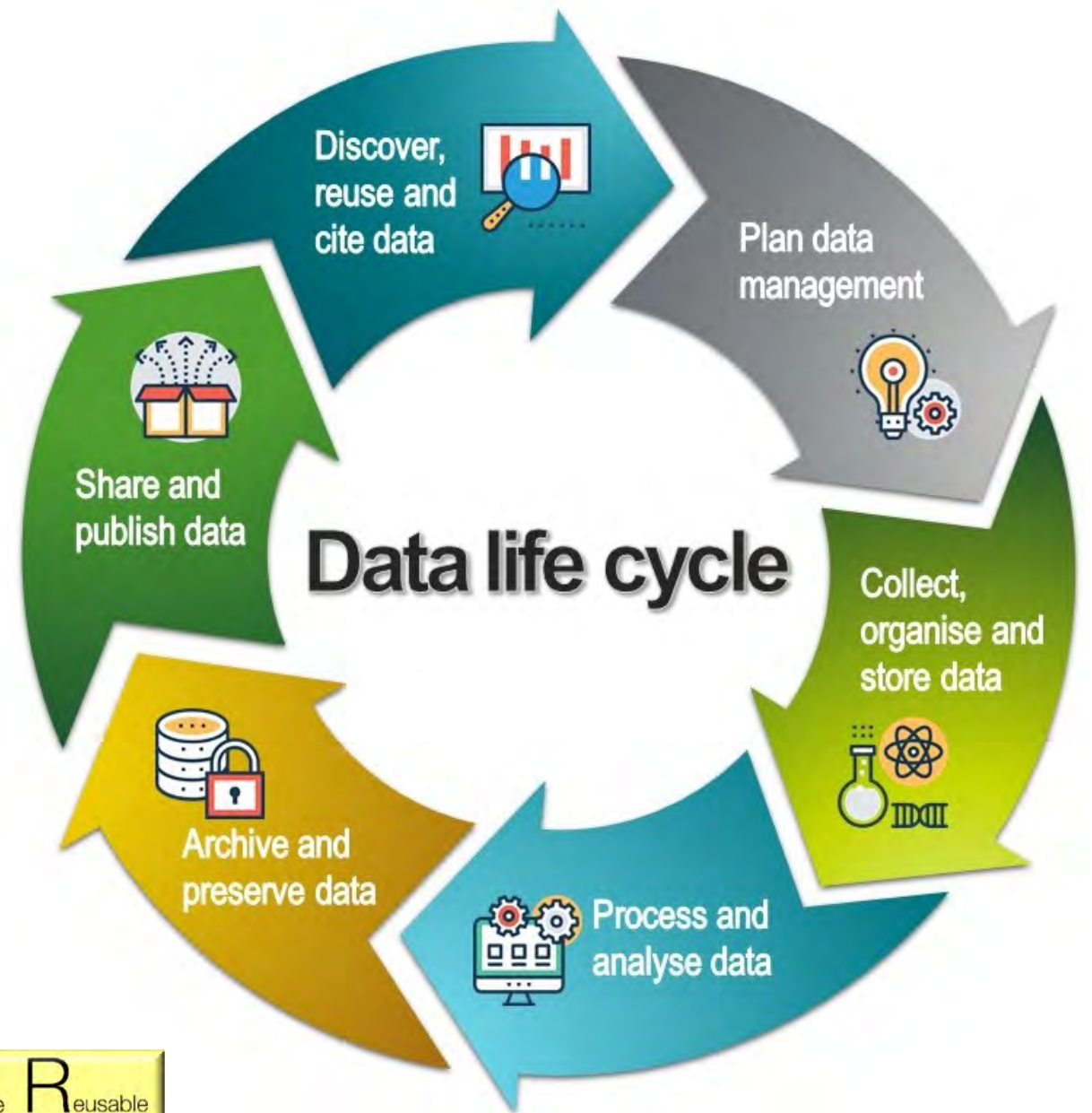
1. Introduction
2. Presenting Data Management Support (DMS)
3. Funders' instructions on data management
4. To write a data management plan
5. Presenting Swedish National Data Service (SND)
6. Questions



Data management – something you already do!

Good data management is not a goal in itself, but rather is the key conduit leading to knowledge discovery and innovation, and to subsequent data and knowledge integration and reuse by the community after the data publication process.

Ref. Wilkinson, M., Dumontier, M., Aalbersberg, I. *et al.* The FAIR Guiding Principles for scientific data management and stewardship. *Sci Data* 3, 160018 (2016), <https://doi.org/10.1038/sdata.2016.18>



Data Management Support: Our competence

- Domain expertise on environmental data
- Work experience from public agencies
- PhD education



What can DMS do for you?



General data management

- Individual and team appointments
- Questions about e.g. FAIR data, Open data, data publication, archiving, documentation, file formats

Data management plans

- Help to set up a DMP (Word template or DMPonline)
- Feedback on draft DMPs

Data publication

- Advice on appropriate data repositories
- Advice on preparation of data before publication
- Review and curation of data submissions to SND

Web page www.slu.se/en/dcu

Team inbox dms@slu.se



Contents

1. Introduction
2. Presenting Data Management Support (DMS)
3. Funders' instructions on data management
4. To write a data management plan
5. Presenting Swedish National Data Service (SND)
6. Questions

Formas and Swedish Research Council (VR)

FORMAS 

- When you receive a grant: develop a data management plan, that can be presented at request
- Research results must be published with immediate open access
- Make scientific data from the project openly available



- When you receive a grant and if the research generates data: keep a data management plan, that can be presented at request
- Research articles must be published with open access
- The recommendation from VR is to publish research data



Contents

1. Introduction
2. Presenting Data Management Support (DMS)
3. Funders' instructions on data management
4. To write a data management plan
5. Presenting Swedish National Data Service (SND)
6. Questions

Data Management Plan (DMP)



Data Management Plan (DMP) – the ‘What’



Data Management Plan (DMP) – the ‘What’



A **plan** that documents

Data Management Plan (DMP) – the ‘What’



A **plan** that documents



how to **manage**



Data Management Plan (DMP) – the ‘What’



A **plan** that documents



how to **manage**



data during and after a project.



Data Management Plan (DMP) – the ‘What’



A **plan** that documents



how to **manage**

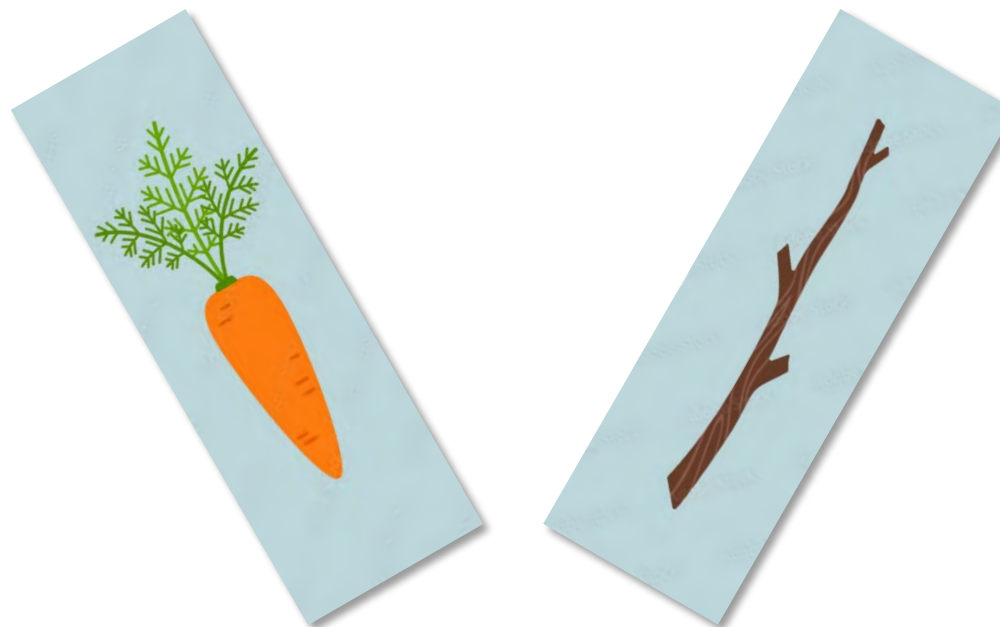


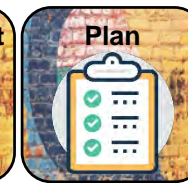
data during and after a project.



A **plan** that documents how to **manage** data.

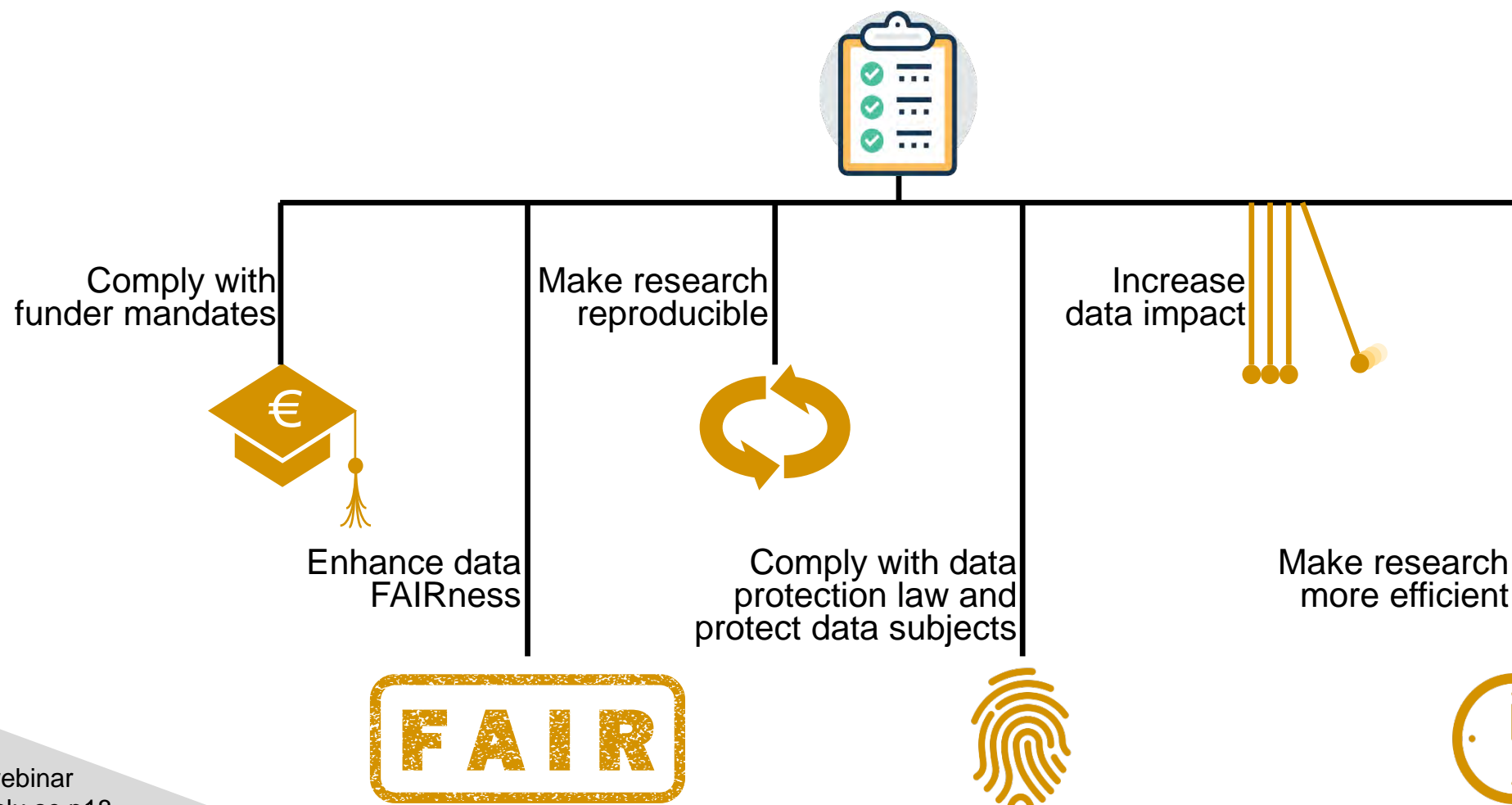
Data Management Plan (DMP) – the ‘Why’

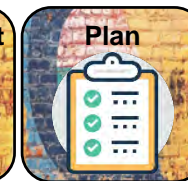




A **plan** that documents how to **manage data**.

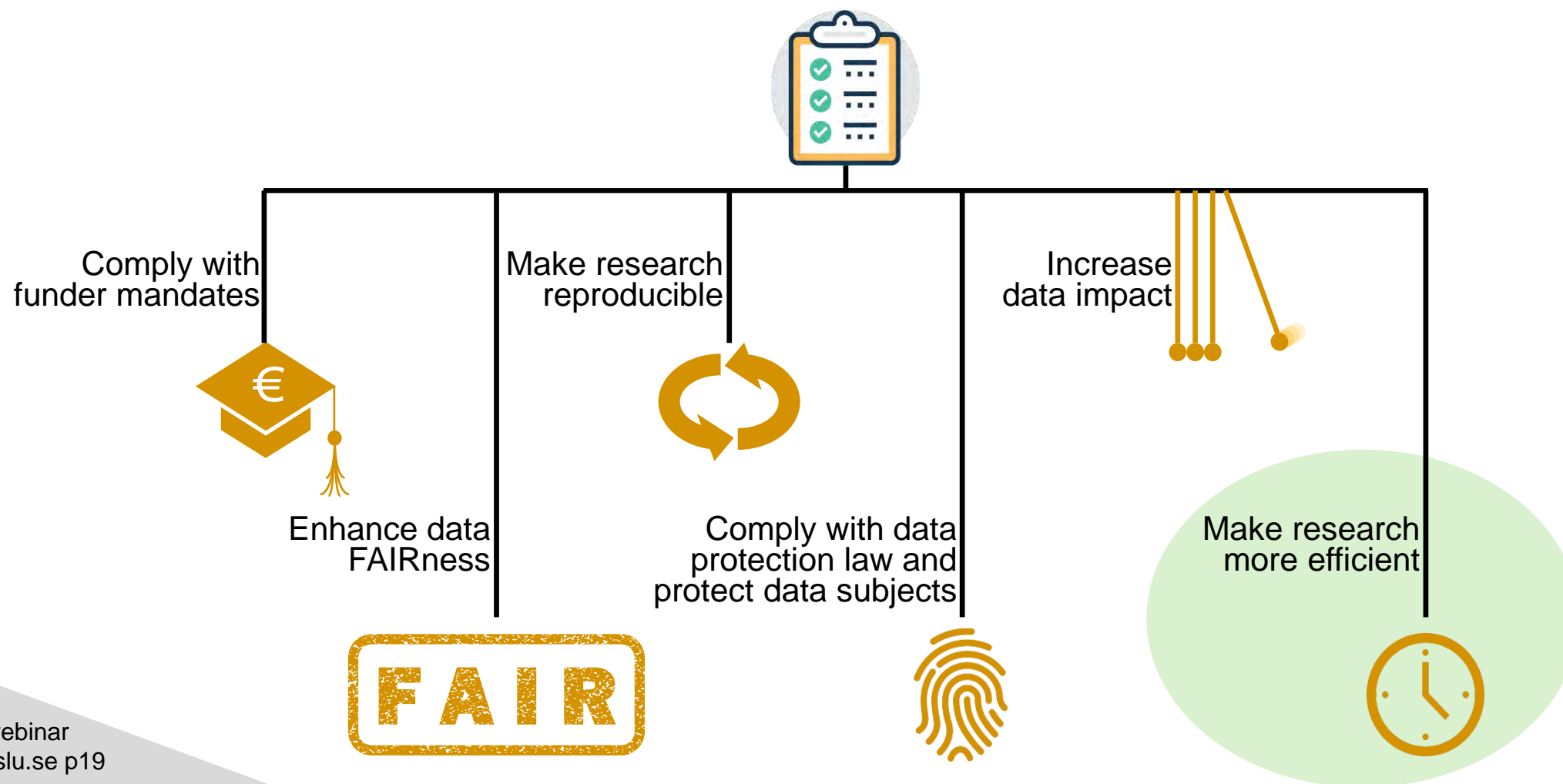
Data Management Plan (DMP) – the ‘Why’

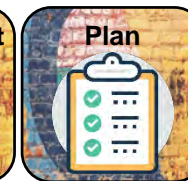




A **plan** that documents how to **manage** data.

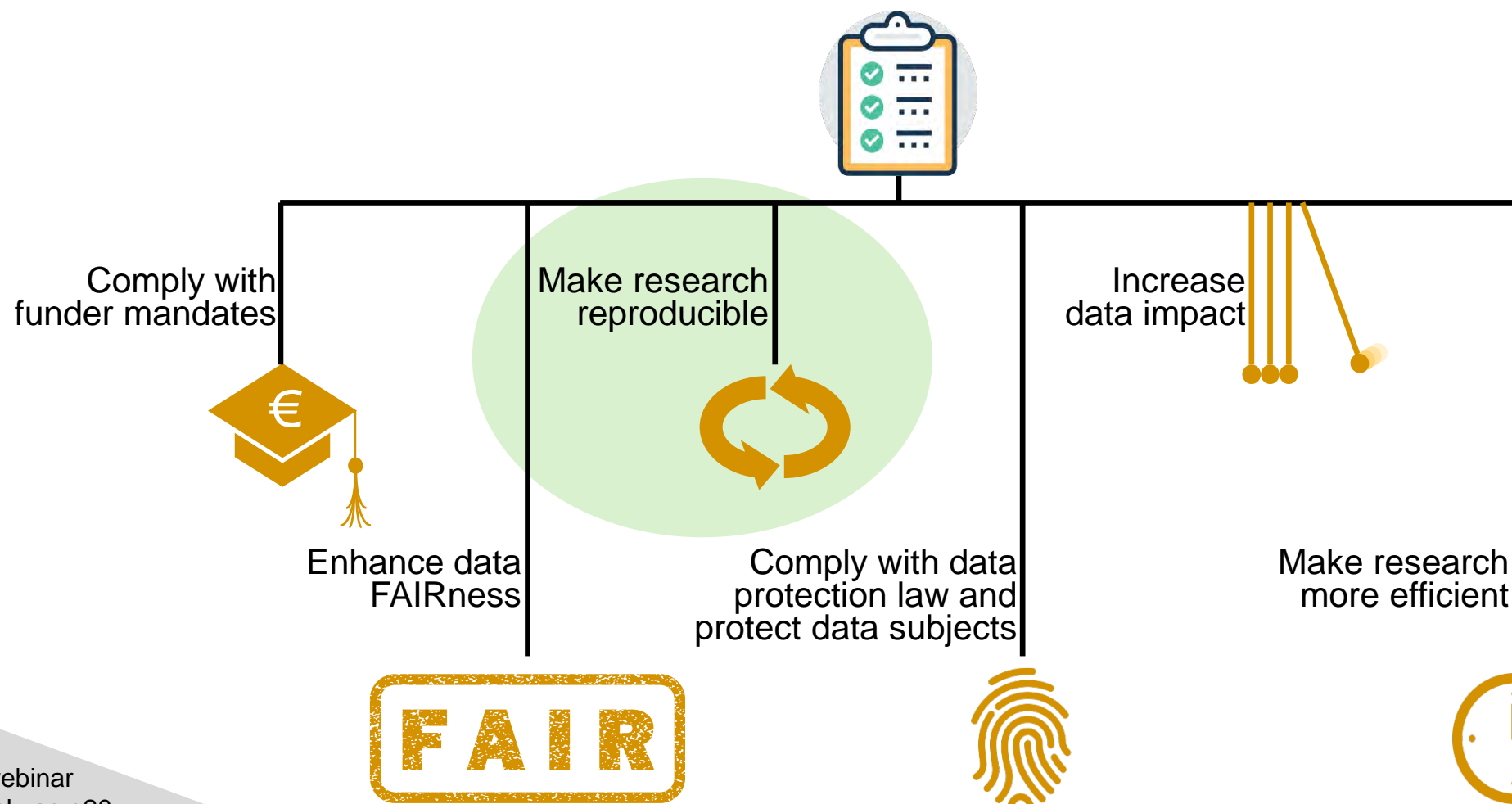
Data Management Plan (DMP) – the ‘Why’

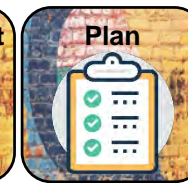




A **plan** that documents how to **manage data**.

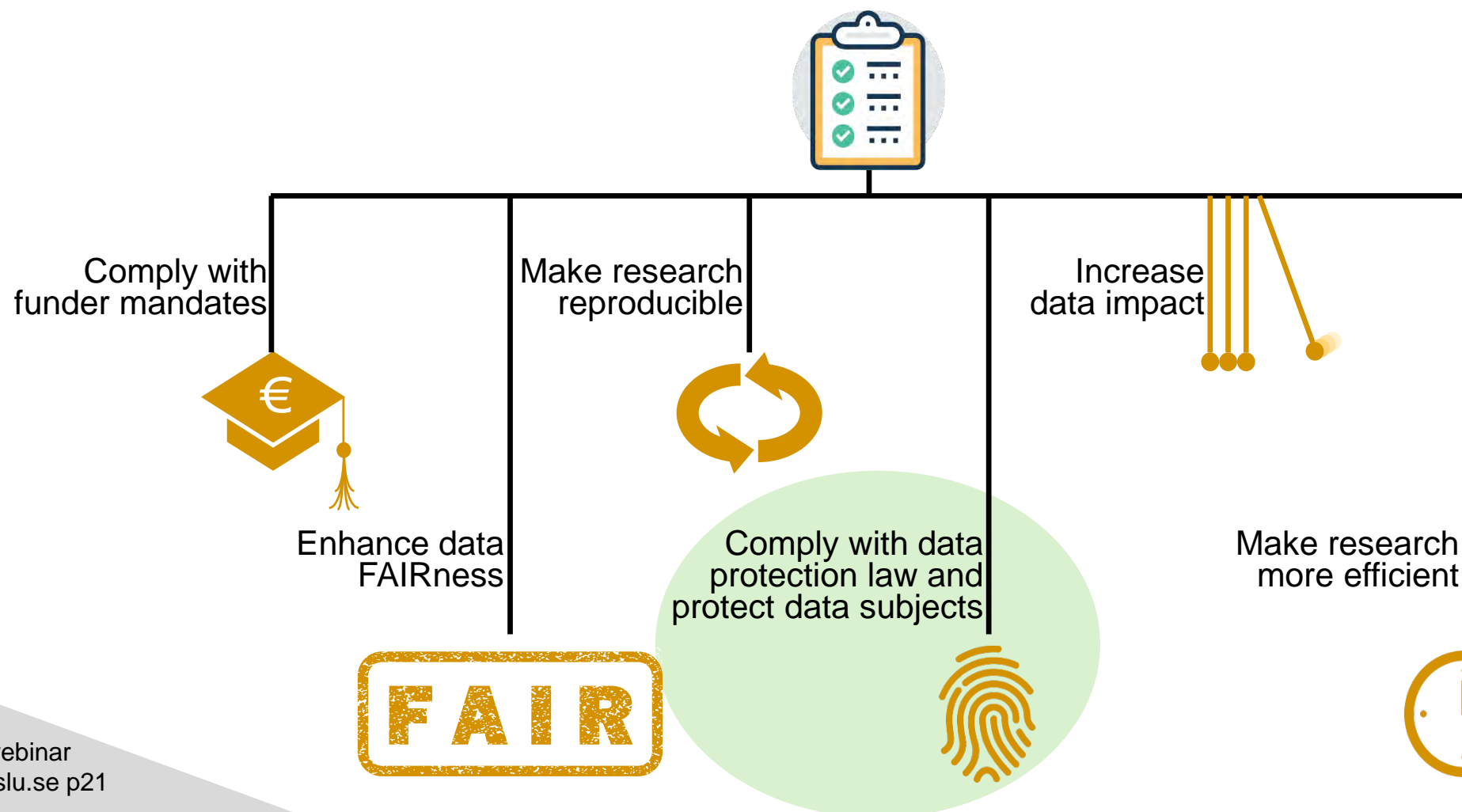
Data Management Plan (DMP) – the ‘Why’





A **plan** that documents how to **manage data**.

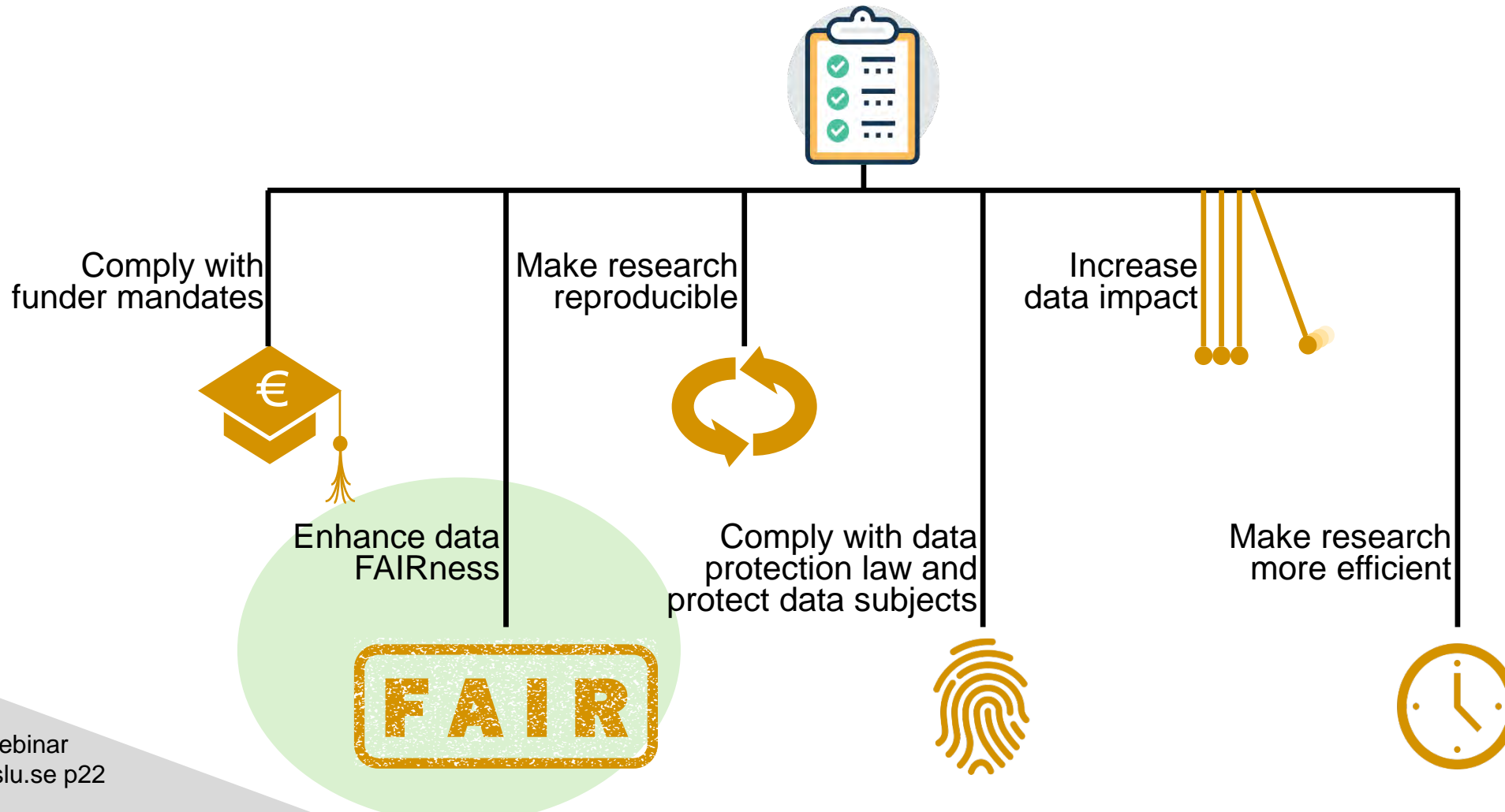
Data Management Plan (DMP) – the ‘Why’

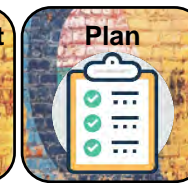




A **plan** that documents how to **manage data**.

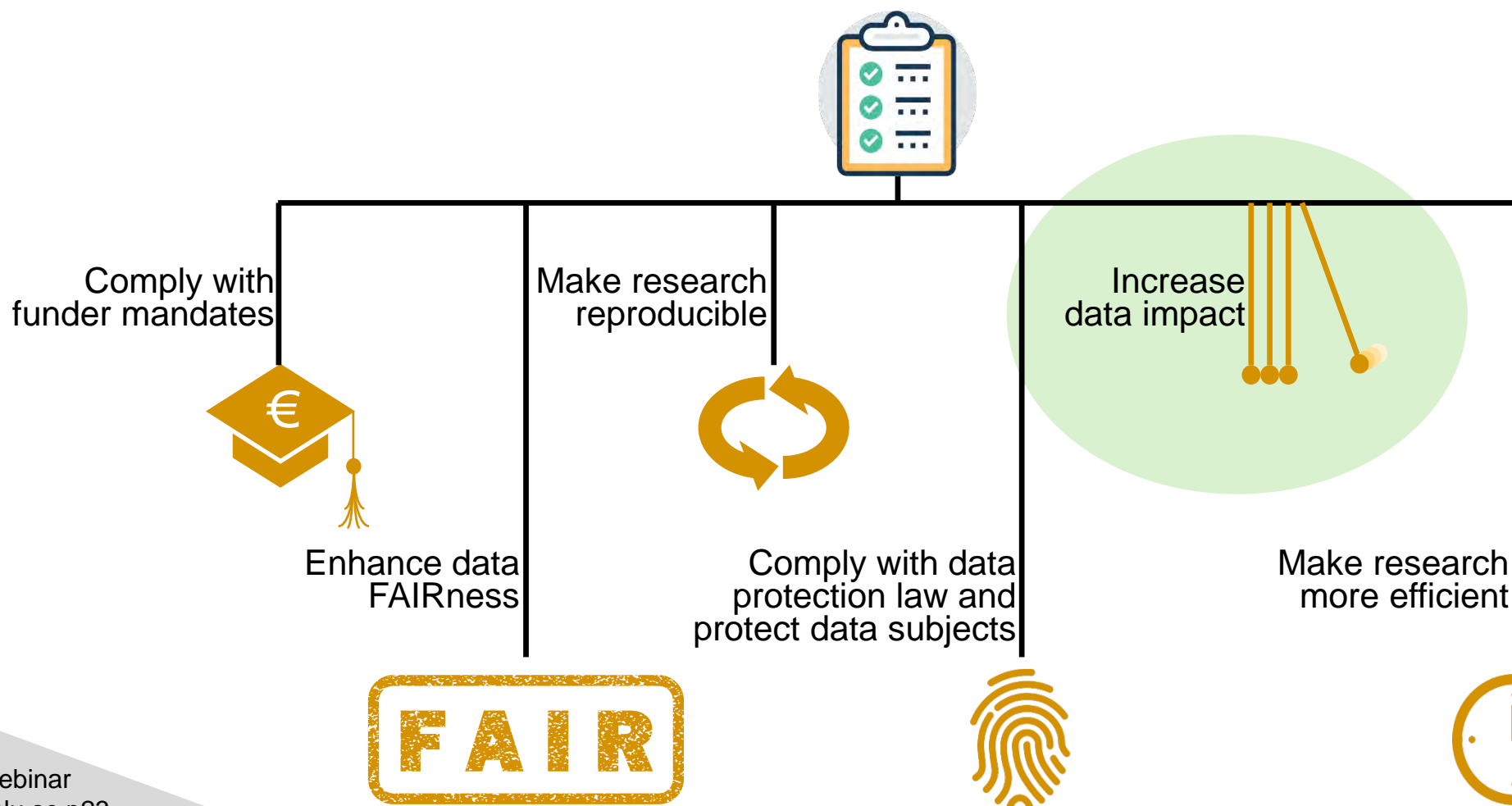
Data Management Plan (DMP) – the ‘Why’

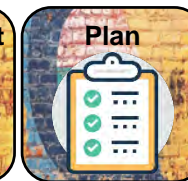




A **plan** that documents how to **manage** data.

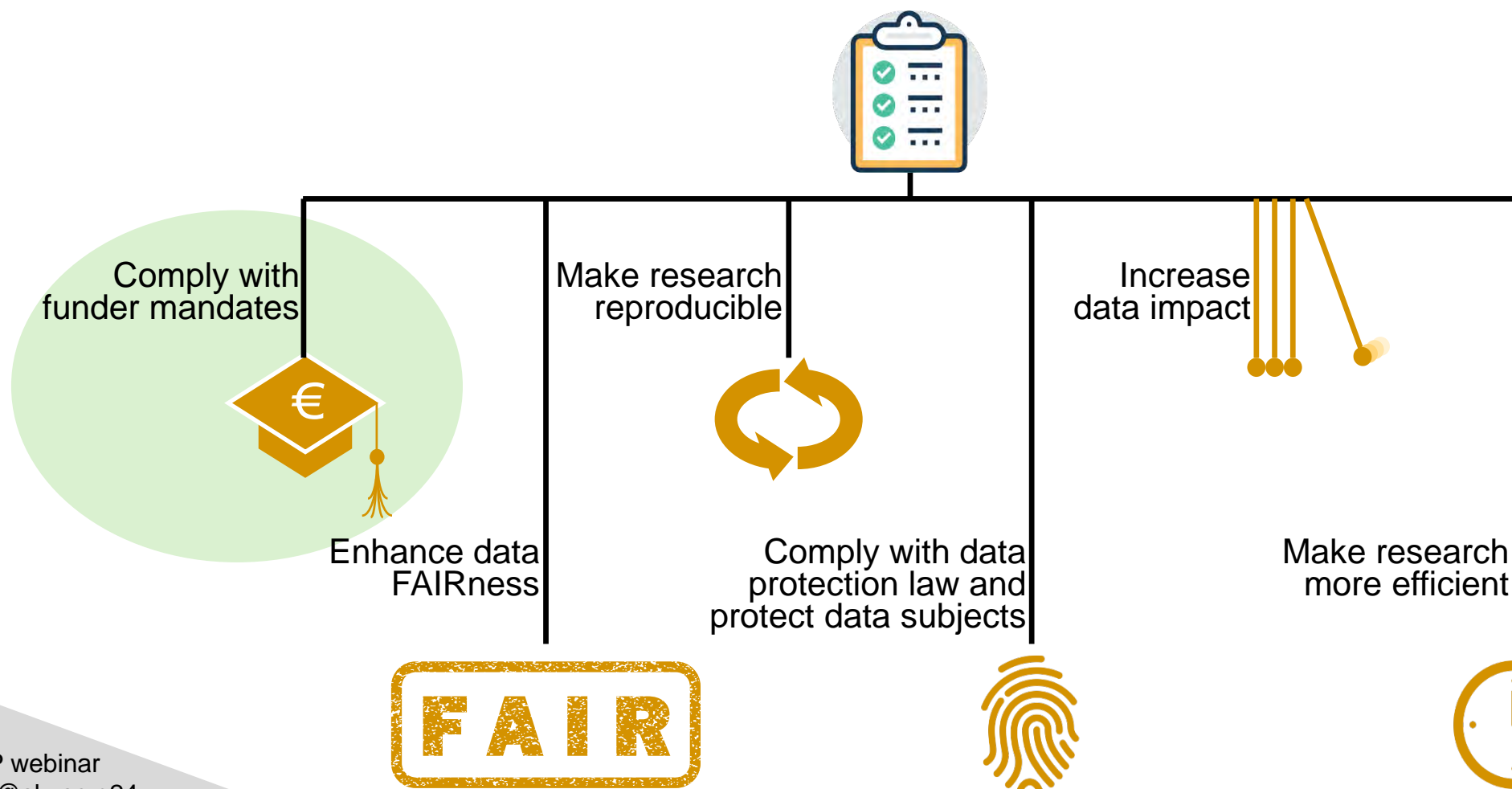
Data Management Plan (DMP) – the ‘Why’





A **plan** that documents how to **manage data**.

Data Management Plan (DMP) – the ‘Why’





Data Management Plan (DMP) – the ‘Why’



“All who are awarded a grant from the Swedish Research Council must have a data management plan if the research generates research data.”



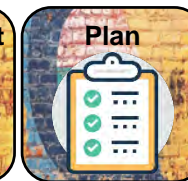
“You must have a data management plan that describes how the data produced in the project will be managed after the project ends.”



A **plan** that documents how to **manage data**.

Data Management Plan (DMP) – the ‘How’

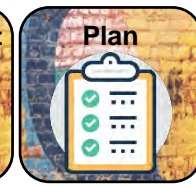




A **plan** that documents how to **manage** data.

Data Management Plan (DMP) – the ‘How’





A **plan** that documents how to **manage data**.

Data Management Plan (DMP) – the ‘How’

description and collection

documentation and quality

storage and backup

legal and ethical aspects

sharing and preservation

responsibilities and resources



A **plan** that documents how to **manage data**.

Data Management Plan (DMP) – the ‘How’

description and collection

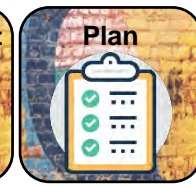
- **Data description and collection or re-use of existing data**
 - a. How will new data be collected or produced and/or how will existing data be re-used?
 - b. What data will be collected or produced?



Data Management Plan (DMP) – the ‘How’

documentation and quality

- **Documentation and data quality**
 - a. What metadata and documentation will accompany the data?
 - b. What data quality control measures will be used?



Data Management Plan (DMP) – the ‘How’

storage and backup

- **Storage and backup during the research process**
 - a. How will data and metadata be stored and backed up during the research?
 - b. How will data security and protection of sensitive data be taken care of during the research?



Data Management Plan (DMP) – the ‘How’

legal and ethical aspects

- **Legal and ethical requirements, codes of conduct**
 - a. If personal data are processed, how will compliance with legislation on personal data and on security be ensured?
 - b. How will other legal issues be managed? What legislation is applicable?
 - c. What ethical issues and codes of conduct are there, and how will they be taken into account?



Data Management Plan (DMP) – the ‘How’

sharing and preservation

- **Data sharing and long-term preservation**
 - a. How and when will data be shared? Are there possible restrictions to data sharing or embargo reasons?
 - b. How will data for preservation be selected, and where will data be preserved long-term?
 - c. What methods or software tools are needed to access and use data?
 - d. How will the application of a unique and persistent identifier to each data set be ensured?



Data Management Plan (DMP) – the ‘How’

responsibilities and resources

- **Data management responsibilities and resources**
 - a. Who will be responsible for data management?
 - b. What resources will be dedicated to data management and ensuring that data will be FAIR?



A **plan** that documents how to **manage data**.

Data Management Plan (DMP) – the ‘Template’



Data Management Plan (DMP) – the ‘Template’



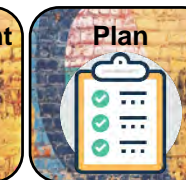
one template



compliant with **VR, Formas, RJ, and Science Europe**



in **Microsoft Word** or **DMPonline**



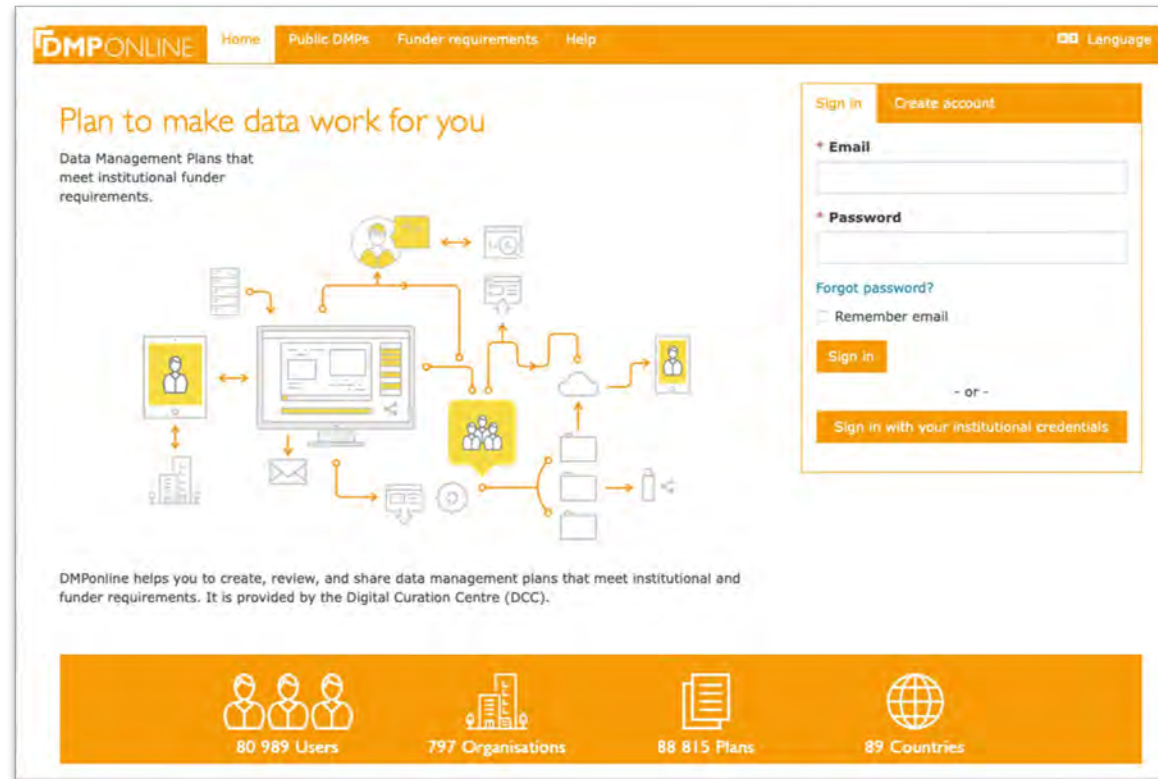
Data Management Plan (DMP) – the ‘Template’





A **plan** that documents how to **manage data**.

Data Management Plan (DMP) – the ‘Template’





A **plan** that documents how to **manage** data.

Data Management Plan (DMP) – the ‘Template’



Writing a Data Management Plan (DMP) in DMPonline – Instructions on how to use DMPonline

Jürg Brendan Logue, Data Curation Unit (DCU)



Contents

1. Introduction
2. Presenting Data Management Support (DMS)
3. Funders' instructions on data management
4. To write a data management plan
5. Presenting Swedish National Data Service (SND)
6. Questions

Where to publish research data?



General
repositories

e.g. **SND**
dryad ([link](#))
zenodo ([link](#))

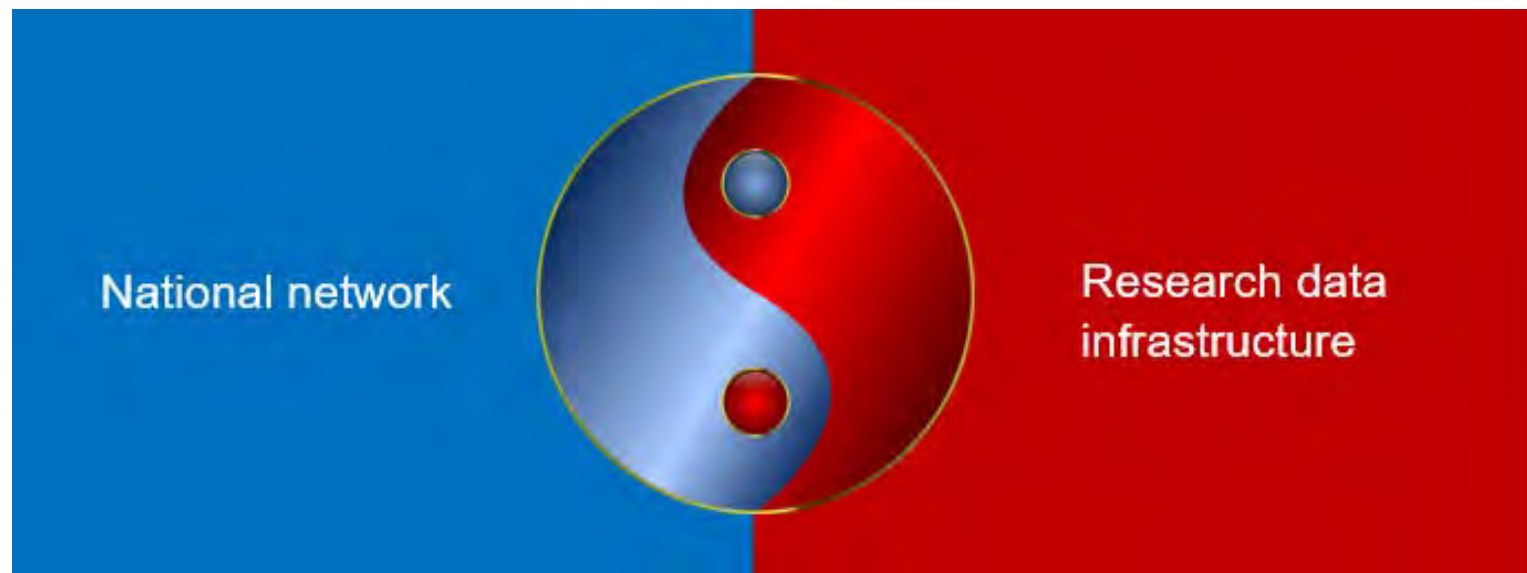


Topical or
subject specific

see **re3data.org**
([link](#))

Swedish National Data service

Web page: <https://snd.gu.se>



SND objectives: Open Science, national coordination and support

- To actively promote Open Science
- To coordinate the development of a trustworthy system of research data repositories
- To assist and benefit users through education, support and technical prerequisites



SND

Svensk nationell datatjänst

SND: system

- Log in with your SLU account
- Create a data description in the web form
- Submit it for publication
- Go through the review process
- Get a DOI to facilitate references and citation



SND's data organisation and information system

New data description

Title *

Enter a descriptive, preferably unique, name for the data description, both in Swedish and in English. If no title is available in Swedish, or if it is difficult to translate, the English title can be entered in both fields.

Title (in Swedish)

Title (in English)

Data accessibility level *

Access to data through SND or other external actor *

Specify where data will be available. You choose whether the data is made available through SND's research data portal, via downloading or ordering, or through an external ser.. [Show more](#)

☐ Access to data through SND

☐ Access to data through an external actor

Q&A



Photo: CC by Evans Dennis (Unsplash)
Illustration: CC by Peggy Marco (Pixabay)



Thank you for your attention!

CONTACT DETAILS

Team inbox: dms@slu.se

Web page: www.slu.se/en/dcu