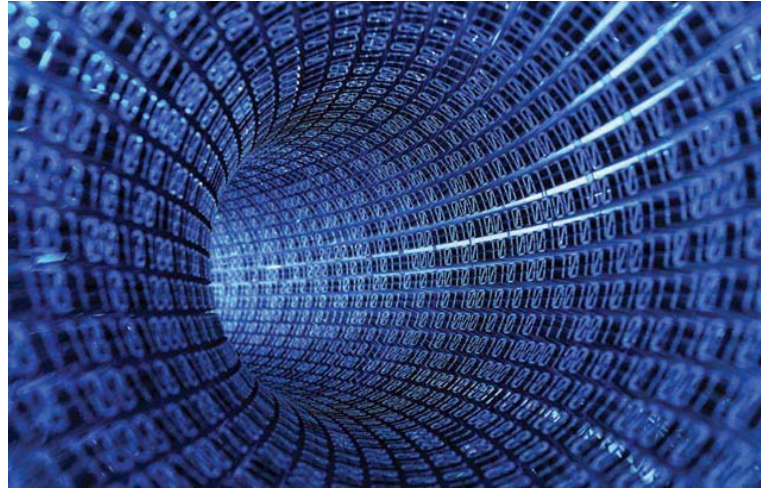
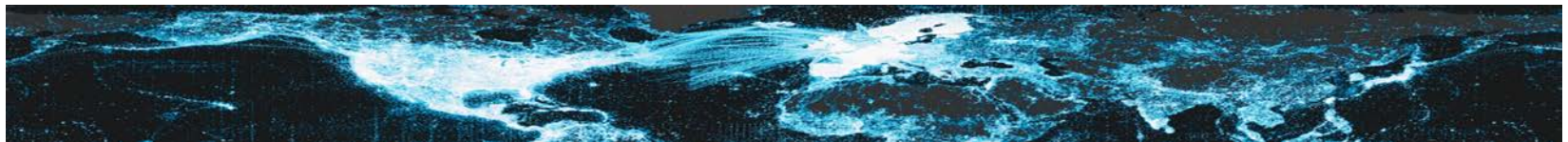


ALA4R & Mirroreum

A gateway to reproducible research



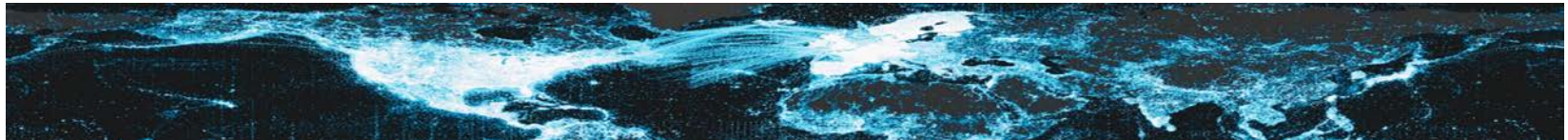
Christian Svindseth



ALA4R & Mirroreum

A gateway to reproducible research

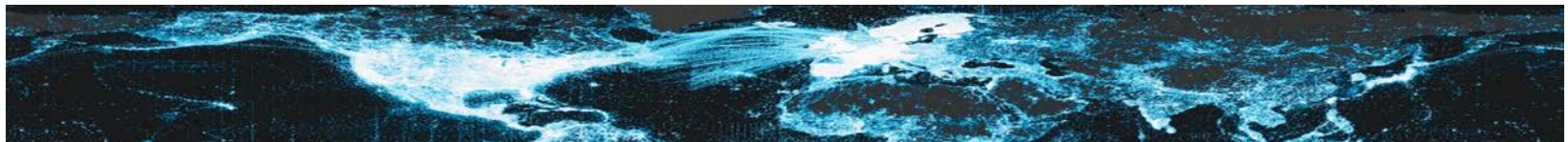
- Reproducible research is being increasingly established within the research community as good practice and involves sharing of data and code, enabling results to be peer-reviewed.
- R package for programmatic data access from a Living atlas instance-ALA4R
- Customizable, and hence a custom package for various national instances <https://github.com/raymondben/livingatlases>



ALA4R & Mirroreum

A gateway to reproducible research

- Web-enabled Reproducible Research
- A national node can deploy a web-enabled version of RStudio with ALA4R and relevant R packages pre-installed.
- This software bundle can be run using Docker in the cloud or locally and is called "Mirroreum"
- Access to a fully fledged web-enabled analysis platform for biodiversity data.



ALA4R & Mirroreum

A gateway to reproducible research

<https://mirroreum.bioatlas.se/auth-sign-in>

<https://github.com/bioatlas/mirroreum>

<https://hub.docker.com/r/bioatlas/mirroreum/>

<https://github.com/atlasoflivingaustralia/ala4r>

[https://cloud.r-
project.org/web/packages/ALA4R/index.html](https://cloud.r-project.org/web/packages/ALA4R/index.html)

