

The VMF PhD council



Introduction for PhD students, 2019-11-13
Daniel Bergman, chairperson

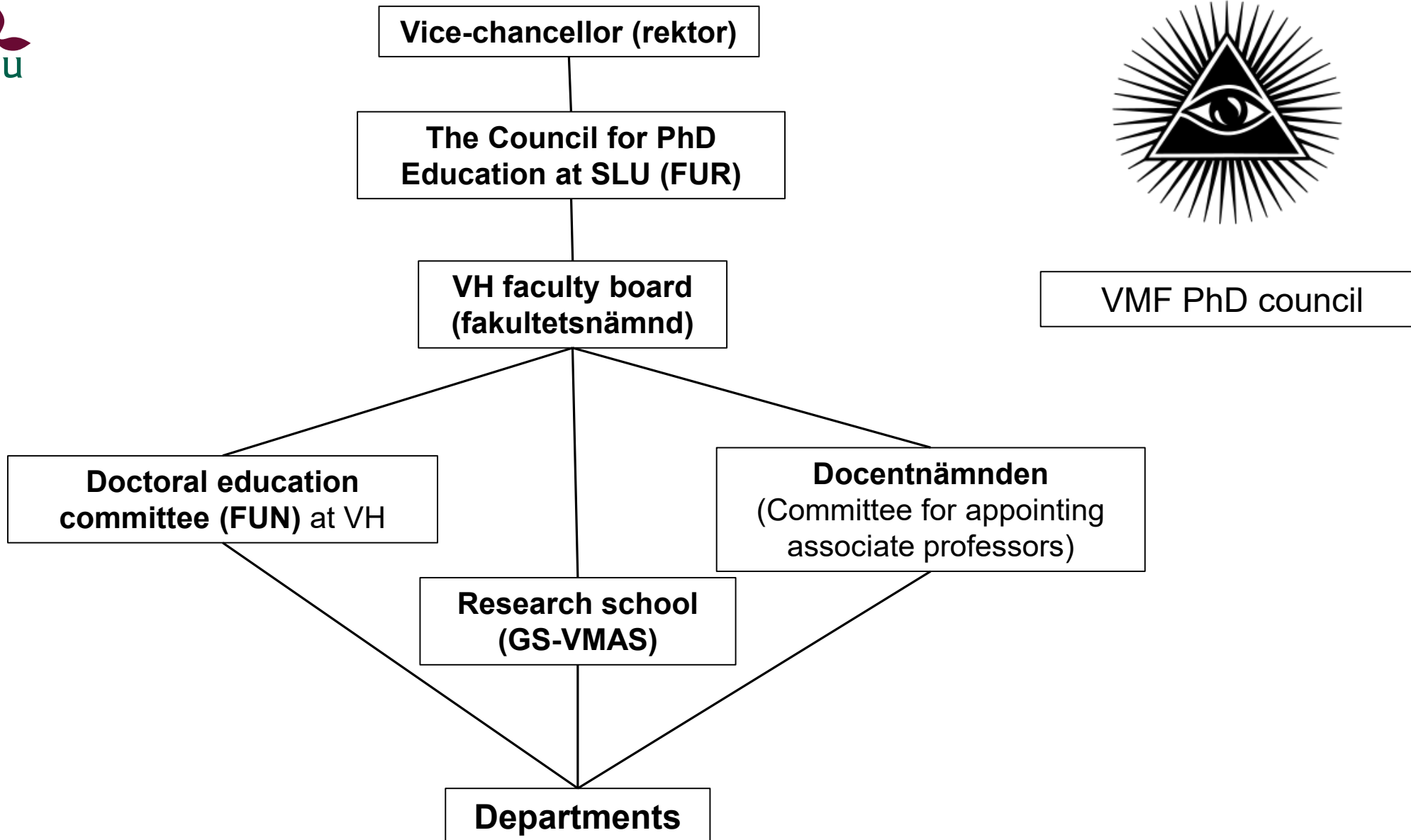
Purpose of the PhD council

- Forum for PhD students at the VH-faculty
- Gathers ~150 PhD students within 8 departments and 7 research subjects
- Representation in education committees, councils
- Quality assurance of the PhD education
- Social activities
- Seminars
- Workshops

Council board 2019

- Daniel Bergman, chairperson
- Anja Pedersen, vice-chairperson
- Lisa Ekman, secretary
- Suvi Mäkeläinen, webmaster
- Pontus Öhlund, secretary





Whole day seminars

- * Communicating science
- Programming in R
- Stress management
- Career guidance

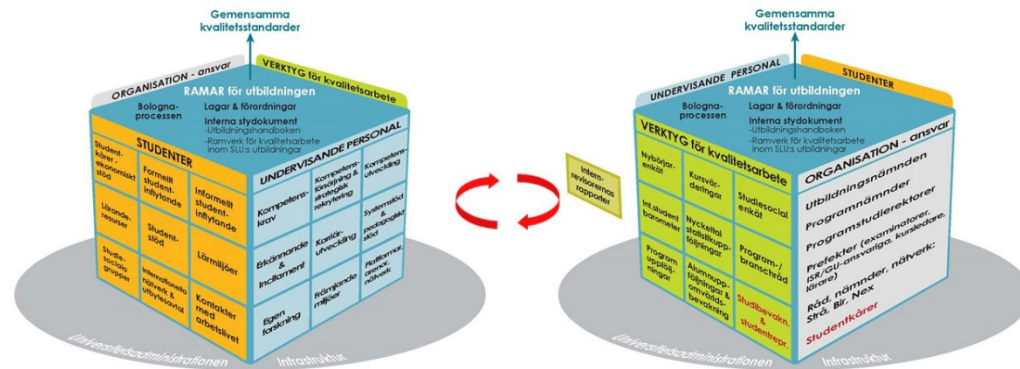
Invited speakers / workshop

Suggestions?



Quality assurance

SLU:s kvalitetssystem (GU)



- The faculty does a self-evaluation of the PhD education every year
- Strengths and weaknesses are discussed in quality dialogues
- Amendments of PhD education guidelines

Lunch seminars

- Get feedback on your project
- Practice your defense
- Presentation technique

Contact: Pontus Öhlund (pontus.ohlund@slu.se)



PhD fika

Fika is a social institution in Sweden and the practice of taking a break with a beverage and snack that is widely accepted as central to Swedish life. (...) *fika* may also function partially as an informal meeting between co-workers and management people, and it can even be considered **impolite** not to join in.

Occasionally on Monday afternoons

Also occasional after works

Advertised via the doktorand-djur mailing list



Don't be a stranger!

Council work is **not** some kind of "academic housekeeping"



You don't *need* "permission" from your supervisor to do council work

Prolongation

- Chairperson: 25 days/year
- Vice-chair: 15 days
- Doctoral education committee representative: 10 days
- Faculty board representative: 10 days



Thank you!

For more information, see:

<https://internt.slu.se/en/support-services/education/doctoral-education1/phd-student-councils/vmf-phd-council/>

Or search for "VMF PhD council"

Or e-mail: daniel.bergman@slu.se

