



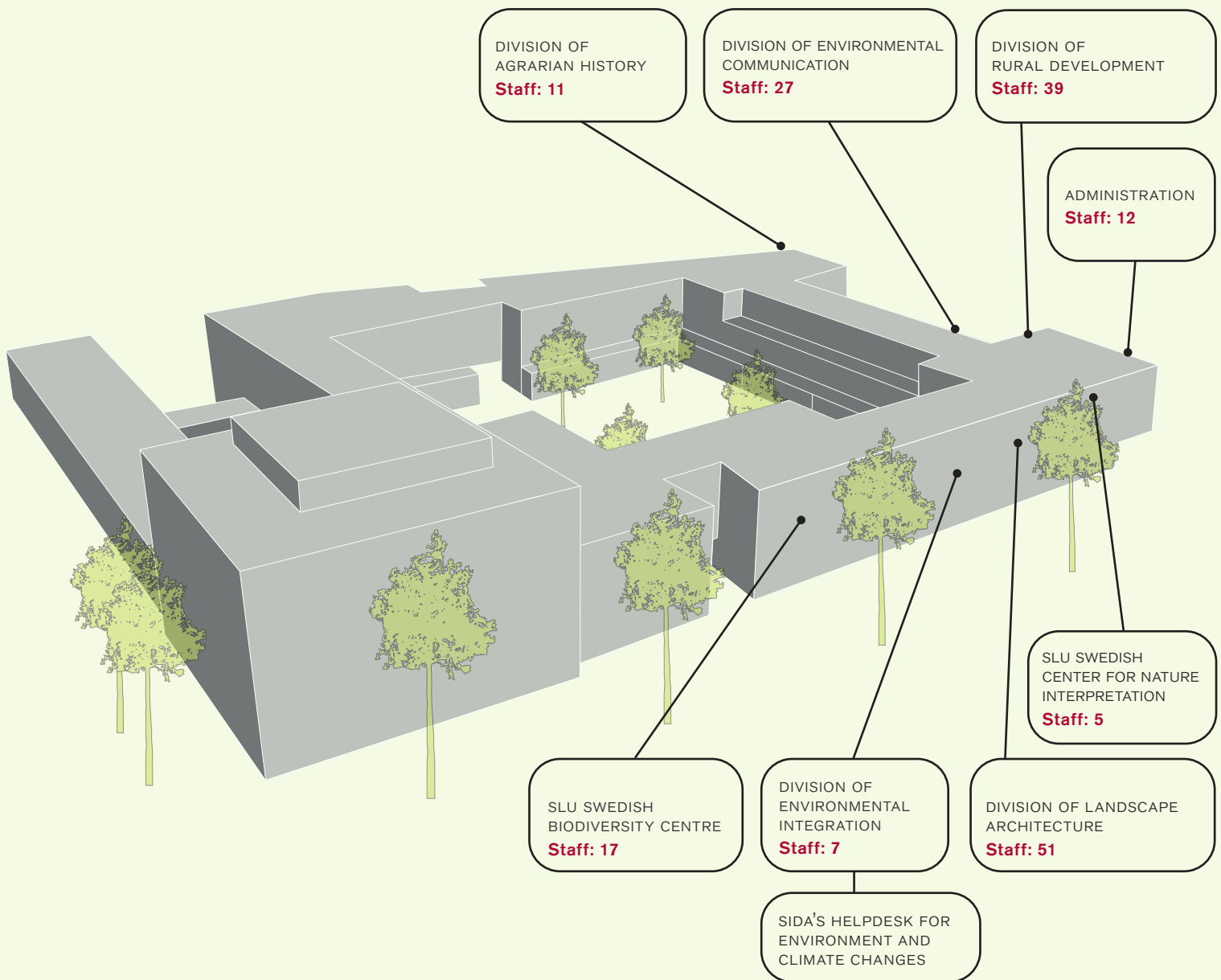
URBAN AND RURAL
DEVELOPMENT



ANNUAL REPORT 2021

Department of Urban and Rural Development

Department of Urban and Rural Development 2021



AN ENVIRONMENT OF SOCIAL SCIENCES, HUMANITIES AND LANDSCAPE DESIGN PRINCIPLES enriches students and researchers with different perspectives—that when mixed creates a successful breeding ground for excellence.

**27.7 MSEK
IN RESEARCH
ASSIGNMENTS**

The national centres and Sida's Helpdesk each year carry out a large number of external research assignments.

**12% OF ALL
STUDENTS AT SLU**

We educate **12%** of the total number of undergraduate students at SLU. We administer **7** education programmes, offer about **80** courses and we run **2** research schools.

**EXPANSIVE EXTERNAL
COLLABORATION**

We see collaboration with actors in society as a tool to contribute to a sustainable development, and as a method to conduct and continuously develop our research and education.

**61.7 MSEK IN NEW
RESEARCH GRANTS**

In 2021, our external research applications had a **20.6%** degree of approval.

**PROGRESSIVE
ENVIRONMENTAL
WORK**

We have a strong commitment to environmental, climate and sustainability issues. By taking own initiatives, we wish to inspire and engage—to contribute to the transition to a more sustainable society.

Message from the heads of the department



PHOTO: ROGER ELG.

KRISTINA MARQUARDT, VICE HEAD OF DEPARTMENT
AND LARS JOHANSSON, HEAD OF DEPARTMENT
OF URBAN AND RURAL DEVELOPMENT.

A second pandemic year has passed and we are so proud to lead a department with such committed employees who have managed to handle the pandemic and its effects so well. Now we look forward with confidence and hope that we in 2022 will be able to return to campus and the new normal.

Despite tough working conditions in 2021, we have been very successful on all fronts. In this year's research application process, we had a dividend of just over 60 MSEK, with an approval rate over 20%, which shows the hard work we have put in and the high quality in our applications.

We have produced many new exciting publications during the year and the number of peer-reviewed research articles increased by an impressive 47% in 2021 compared to 2020.

More good news are the three dissertations we had during the year and that the department received two new associate professors. We have also welcomed a new professor of landscape architecture—read more about Marcus Hedblom on page 16.

» ... the number of peer-reviewed research articles increased by an impressive 47% in 2021 compared to 2020.

Our educational assignment is now just over 12% of the SLU's total educational volume (548 out of 4,579 full-time equivalent students). It is an incredibly important assignment and we have, despite continually changing conditions between distance and physical education during the year, done fantastically well. The course evaluations from period 1 in the autumn of 2021, show that of the 13 courses given at the department, 10 had an average value

above 4.0. Especially fun is that the overall impression for the introductory course on the new Bachelor's programme in political science with a focus on sustainable development was as much as 4.5.

The department's collaboration with the surrounding society is extensive in research and teaching as well. Much through the SLU Swedish Biodiversity Centre (CBM), the SLU Center for Nature Interpretation (CNV) and the Division of Environmental Integration. CBM is developing towards more teaching and research, CNV has continued assignments from both the Swedish Environmental Protection Agency and the Swedish Marine and Water Authority and the Division of Environmental Integration has, in collaboration with the University of Gothenburg, a new four-year agreement of 48 MSEK with Sida regarding a help desk for environmental and climate integration.

*Lars Johansson, Head of department &
Kristina Marquardt, Vice Head of department*

Some key events 2021

19 MARCH

HARRY FISCHER gives his docent lecture in rural development: "Democratizing Climate Adaptation: Exploring the subnational political architectures of responsive climate support".



HARRY W. FISCHER, ASSOCIATE PROFESSOR AND SENIOR LECTURER AT DIVISION OF RURAL DEVELOPMENT.

31 MARCH



LAZARO MNGUMI, DOCTORAL STUDENT AT DIVISION OF LANDSCAPE ARCHITECTURE, HERE AT THE WORLD URBAN FORUM IN ABU DHABI.

LAZARO MNGUMI defends his doctoral thesis in landscape architecture: "Climate Change Resilience: Exploring socio-ecological system resilience for livelihood effects of climate change in peri-urban areas".



ANDREW BUTLER, ASSOCIATE PROFESSOR AND SENIOR LECTURER AT DIVISION OF LANDSCAPE ARCHITECTURE.

20 APRIL

ANDREW BUTLER gives his docent lecture in landscape architecture, titled "Hot Topics and Burning Issues in Landscape Planning".



ANKE FISCHER BEING INTERVIEWED, RIGHT BEFORE HER INAUGURATION LECTURE.

28 APRIL

Professor **ANKE FISCHER** gives her inauguration lecture in environmental communication: "The Struggle over Sustainability: On the co-construction of meaning in environmental governance".

19 MAY

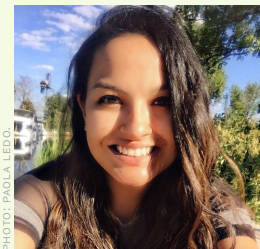
SAID NUHU defends his doctoral thesis in landscape architecture: "Rethinking Land Access Governance in Global South Cities: Understanding the dynamics and contentions of land access processes and governance mechanisms in peri-urban areas of Dar es Salaam, Tanzania".



SAID NUHU, DOCTORAL STUDENT AT DIVISION OF LANDSCAPE ARCHITECTURE.

15 JUNE

PAOLA LEDO defends her doctoral thesis in landscape architecture: "A Southern Perspective: Northern and indigenous influences on the establishment of a hybrid culture of participatory planning, the story of Sacaba".



PAOLA LEDO, DOCTORAL STUDENT AT DIVISION OF LANDSCAPE ARCHITECTURE.

1 SEPTEMBER



PHOTO: ANDERS ESSELIN.

MARCUS HEDBLOM takes on the position as new professor of landscape architecture with a focus on landscape management. The professorship is the first of its kind in Uppsala.

13-15 SEPTEMBER

ECLAS 2021—STOP AND THINK The annual international ECLAS conference for teachers, researchers and professionals in the area of landscape architecture, is this year hosted by Division of Landscape Architecture, SLU. The conference is digital and gathers 700 participants from 52 countries world-wide.



PARTICIPANTS IN ONE OF THE PANEL SESSIONS OF THE CONFERENCE. FROM THE LEFT: ALEXANDRA D'URSO, ELLEN FETZER, MUSTAFA DIKEÇ AND VERA VICENZOTTI.



ILLUSTRATION: IDA WENDT.

11 NOVEMBER

ATT SPRIDA RINGAR PÅ VATTNET

The annual conference in water pedagogics, organised by SLU Swedish Centre for Nature Interpretation — this year with the theme »To tell about water«.



THE CONFERENCE TEAM. FROM THE LEFT: EMMA SAHLSTRÖM, AMANDA BENGTTSSON, PATRIK CRAS, IZABEL NORDLUND, THOMAS NORRBY, NORA WAHLSTRÖM AND EMIL PLANTING MOLLAOGLU, ALL FROM DIVISION OF RURAL DEVELOPMENT.

11-12 NOVEMBER

RURALITIES AND REGIONS IN TRANSITION

Division of Rural Development, together with Nordregio, gathers researchers from all over Sweden to exchange experiences and discuss current topics connected to regional and rural development in Sweden.

16-17 NOVEMBER

ENVIRONMENTAL COMMUNICATION DAYS 2021 organised by the research programme SLU Mistra Environmental Communication — an annual web conference for people working with environmental communication.

16 NOVEMBER

LANDSCAPE ARCHITECT PROGRAMME

50 YEARS ANNIVERSARY this is celebrated with round table talks, review of the programme's dynamic history, a film premiere and a mingle — in both Alnarp and Ultuna as well as in Zoom.



ON STAGE IN ALNARP, HÅKAN SCHRÖDER WITH THE ULTUNA CROWD IN THE SCREEN.

25 NOVEMBER

MÅNGFALDSKONFERENSEN 2021

An annual conference, organised by SLU Swedish Biodiversity Centre, gathers 70 people on site at SLU Campus Ultuna.



AMMIE BERGLUND AND TORBJÖRN EBENHARD DISCUSSING THE EXTINCTION OF SPECIES.

6 DECEMBER

SLU Swedish Centre for Nature Interpretation appoints **NATURE INTERPRETER 2021**. Winners are Äventyrsgruppen at Miljöverkstan Flaten and Utbildningsplats skärgården.



PHOTO: CIVU

Subject chairs 2021

Agrarian history



PHOTO: JENNY SVENNÅS-GILLNER.

PATRICK SVENSSON
PROFESSOR AND CHAIR
AGRARIAN HISTORY

AGRARIAN HISTORY is a historical discipline that encompasses a development from ancient times to the present. The subject is about agricultural production and technological development, social and economic conditions, people in the rural society and their relation to nature, the landscape and to society at large.

At present, four main research themes are at the center of the research agenda:

- Transhumance, commons and property rights;
- Early modern climate adaptation;
- Agricultural growth and transformation;
- Socio-economic conditions in the rural society.

To this, several other topics are studied, such as garden history, medieval agriculture and the emergence of the servant system, historical inequality, the commercialization of agriculture, and landscape and settlement history. Research at the division combines theories and methods from both the humanities and natural science, and by using Swedish contexts and sources to address general problems it contributes to the international research agenda.

The division is also engaged in collaboration with the surrounding society. One example is the external consultancy for the County Administrative Board in terms of the cultural reserve of Linnés Hammarby that have resulted in a long-term management plan for the reserve, and the reserve being used for teaching and for research on e.g. swidden agriculture and the cultivation of land race grains.

Knowledge of history increases the understanding of the landscape and agriculture we encounter today. Because history enables analyses of long-term processes, it also contributes to knowledge of how people act in and react to societal transformations, something that is difficult to study in a short-term current perspective.

Subject chairs 2021

Rural development

With the subject areas: Global North and Global South

The Division of Rural Development engages in international research, teaching and cooperation that contributes to scholarship and practice on broad aspects of development and sustainability in rural areas. Across the globe, rural areas are undergoing rapid transformations caused by social and economic policies, globalization and climate and environmental change. We engage with issues of justice, knowledge and power in agriculture, forestry, development and environmental politics. By bringing to bear intersectional perspectives of power on the issues we study, we combat mainstream imaginations of the rural as residual, uninhabited, spaces for extraction and passive providers of food and natural resources. Our strength lies in our commitment to probing how development processes unfold through interdisciplinary conceptualizations and participatory methodologies.

The subject is an interdisciplinary field of study based in the social sciences, in which we pay special attention to how ideas about development have material consequences in the specific contexts of the **GLOBAL NORTH** (Sweden and Europe) and **GLOBAL SOUTH**. We nonetheless collaborate across our subjects to approach rural areas as dynamic material spaces made up of networks of relations that span between the rural and the urban, the Global North and South, paying attention to the particularities of the two contexts but also to the connections.



SEEMA ARORA-JONSSON
PROFESSOR AND CHAIR
GLOBAL NORTH (SWEDEN AND EUROPE)

PHOTO: MAYA ARORA-JONSSON



FLORA HAJDU
ASSOCIATE PROFESSOR AND ACTING CHAIR
GLOBAL SOUTH

PHOTO: FREDRIK ÖBERG

Subject chairs 2021

Landscape architecture

With the subject areas: Design Theory, Profession and Practice, Spatial Planning and Landscape Management



PHOTO: JENNY SVENNÄS-GILLNER.

THOMAS OLES
PROFESSOR AND SUBJECT CHAIR
DESIGN THEORY

The purpose of **DESIGN THEORY** is to reflect on, and explore ›design‹ as a specific way of creating knowledge, with a view toward understanding and improving the wider educational setting of which the subject area is a part.



PHOTO: ANDERS INGVARSSON.

CAROLA WINGREN
PROFESSOR AND SUBJECT CHAIR
PROFESSION AND PRACTICE

In **PROFESSION AND PRACTICE**, methods and theories are developed in relation to the landscape architect's role, professional practice, landscape architectural processes and the landscape's change over time. With a focus on factors such as form, scale or materiality, aesthetic issues and the physical landscape's significance for meaning and identity in the landscape are processed. Profession and Practice works with landscapes regardless of scale, character or spatial position. Exploration and communication through sketch and model is an important focus, as is the use of various architectural tools and representational methods when communicating about the landscape.

Subject chairs 2021

The subject area **SPATIAL PLANNING** studies the interplay between the landscape, spatial planning and (other forms of) governance. Much of our work is characterised by a landscape perspective, which facilitates studies of the complex interplay between land-use, law, ecology, everyday practices of the inhabitants, and planning processes.

Landscape planning, environmental assessment, sustainable urban development, landscape justice, landscape analysis, and planning for recreation and health, are key themes within our research and education.

LANDSCAPE MANAGEMENT focuses on how urban open space management contributes to biodiversity, climate change adaptation and other ecosystem services. How design-oriented maintenance affects experience-values, creates conditions for recreation, urban outdoor life and play and learning among the people of different ages and social contexts, who use urban landscapes, is a vital part in research and education.

Sustainable urban »soil, water and plant-systems« is a branch of business to develop knowledge about biochar-based plant beds that optimize vegetation growth and contribute to capture and drain storm water.



MATTIAS QVISTRÖM
PROFESSOR AND SUBJECT CHAIR
SPATIAL PLANNING

PHOTO: VERA VICENZOTTI



MARCUS HEDBLÖM
PROFESSOR AND SUBJECT CHAIR
LANDSCAPE MANAGEMENT

PHOTO: FREDRIK FUNCK

Subject chairs 2021

Environmental communication



ANKE FISCHER
PROFESSOR AND SUBJECT CHAIR
ENVIRONMENTAL COMMUNICATION

At the Division of **ENVIRONMENTAL COMMUNICATION**, a diverse team with roots in political sciences, sociology, geography, science and technology studies and social psychology investigates the communication challenges associated to environmental and sustainability issues.

We consider communication as the joint construction of meaning, and conduct

primarily qualitative social science research concerned with themes such as legitimacy, participation, power, resistance, conflict and learning in decision making and transformation processes.

Traditionally, environmental communication has often been understood from an instrumental perspective that focuses on the transmission of information, rather than considering communication as the social negotiation of knowledge, values, emotions and embodied experiences. Through our work, we aim to promote such a broader and more nuanced understanding of communication in research, policy and practice.

Our research spans a wide range of contexts such as nature conservation, forestry, food production, climate change, game management, mining, sustainable production and consumption, and urban planning. We work closely with practitioners, including public agencies, NGOs and industry, to inform processes of public participation and collaboration.



THE ULTUNA STUDENT UNION'S PEDAGOGICAL PRIZE WAS ESTABLISHED IN 1993 AND IS AWARDED A TEACHER WHO HAS EXCELLED PEDAGOGICALLY. THE CHALLENGE PRIZE CONSISTS OF AN GLASS APPLE ON A PEDESTAL WHERE THE WINNER'S NAME AND DEPARTMENT IS ENGRAVED.

Winner of Ultuna Student Union's pedagogical prize

Each year the Ultuna Student Union appoints a teacher for their annual pedagogical prize. The teachers are nominated by students who send their motivations for the winner. This year the prize was given to Kjell Hansen, from Division of Rural Development.

Kjell Hansen is associate professor in ethnology and senior lecturer in rural development. He teaches in courses on the theories and methods of social sciences and supervises students in their Bachelor's and Master's theses on rural development.

The motivation from the nominating students states that his great passion for his subject area, and his ability to convey this to others, creates a great learning for the student. His teaching, both in the classroom and at zoom, is inclusive and adapted to the group.

He sees the students as the individuals they are and never gives up, whether it's about supporting them in finishing their thesis, or helping them understand Bourdieu's tricky theories.



PHOTO: KJELL HANSEN.

KJELL HANSEN, ASSOCIATE PROFESSOR IN ETHNOLOGY AND SENIOR LECTURER IN RURAL DEVELOPMENT.

» **He sees the students as the individuals they are and never gives up, whether it's about supporting them in finishing their thesis, or helping them understand Bourdieu's tricky theories.**

As one of the students declares:

»No other teacher has made me feel so confident that I have dared say that I did not understand—not just once, but twice.« ■



PHOTO: ADRIAN SPARENBOORN



ONE OF FLORA'S PRIVATE PROJECTS DURING 2021, WAS TO MAKE A LARGER KITCHEN GARDEN, THAT INCLUDED A GREENHOUSE.

Environmental motivator 2021

Every year a staff member at the department is rewarded for being the »Environmental motivator of the year«. The award was established in 2018 by the department's transition group. This year's award went to Flora Hajdu, researcher at Division of Rural Development, for her long and solid environmental commitment, both at work and in her private life.

Congratulations on this year's environmental award! How does it feel?

»Thanks! It is of course great fun and the price is so nice and unique! Right now I have it in my home office.«

Why do you think it is so important to get involved in environmental issues in particular?

»We are currently not living in a long-term sustainable way and our lifestyle is unnecessarily using many different kinds of resources, which destroys both the earth's various systems and our own health. On top of this come global justice issues where those that are hardest hit are not the ones that use most of the resources. In my research, I have often interacted with people who are struggling for their livelihood despite increasingly difficult

conditions and I feel that I must try to do something, no matter how small, in order for the world to become a better place.«

Which environmental issues are you most passionate about and why?

»The climate issue is a part of my research, and over the past year I have been more involved in trying to influence the public and politicians to take the issue more seriously, by joining the *Researcher's desk* network, with researchers from different disciplines who are interested in climate issues, arranging lectures, writing debate articles and supporting the climate-striking young people by answering questions in connection with demonstrations. Privately, I am most interested in questions about food production and its impact on the environment, and in the question of food waste. Kristina Marquardt at Division of Rural Development has for several years been holding cooking events with different countries' food as a theme. Kristina and I have now talked about arranging a cooking event around the theme of food waste at the department, given that our gatherings can start again after the pandemic!«

PREVIOUS AWARD WINNERS

2020 Karin Gerhardt and Torbjörn Ebenhard, both researchers at SLU Swedish Biodiversity Centre
2019 Daniel Valentini, doctoral student at Division of Landscape Architecture
2018 Helena Nordström Källström, researcher at Division of Environmental Communication

What would you like to say to your colleagues at the department and at SLU about how we can all help create a more environmentally sustainable development?

»Then I would like to say: Do not think that you can not make any difference, because all kinds of commitments are good. No matter how much or how little you do in your everyday life right now, you are part of the solution instead of part of the problem—if you do not close your eyes to the problems but show that you are committed to finding more sustainable solutions. *Researcher's desk* is open to all researchers who are interested in learning more and getting involved. Even on social media, you have more influence than you think, through what you like, dislike and share. Feel free to think about how you can reduce environmentally harmful behaviours, but also focus on how nice and fun it will be to have more time for environmentally friendly behaviours such as enjoying nature experiences, spending time with friends and family, reading a book, cooking more from scratch or growing something that makes the pollinators happy!« ■



THE CHALLENGE PRIZE
—A RECYCLE ART OBJECT
CREATED BY YLVA DAHLMAN,
FORMER SENIOR LECTURER
IN GRAPHIC ARTS AT THE
DEPARTMENT AND ALSO
AN ARTIST.



PHOTO: FREDRIK FUNCK

The green city is the golden thread

DURING HIS YEARS AS A RESEARCHER, MARCUS HEDBLOM HAS SWITCHED THE PERSPECTIVE FROM FAUNA AND FLORA TO AN ANTHROPOCENTRIC ONE – FROM LOOKING AT HOW ANIMALS AND PLANTS ARE AFFECTED BY HUMANS, TO HOW HUMANS ARE AFFECTED BY THEIR SURROUNDINGS, SOUNDS AND SMELLS AND HOW BIODIVERSITY AFFECTS WELL-BEING AND ATTITUDES TO NATURE.

In September, Marcus Hedblom took on the new position as professor of landscape architecture with a focus on landscape management. A common thread through much of his previous research has been the green city.

The Professorship is completely new at SLU Uppsala. The subject area deals with the making of better living conditions for both people and nature, in harmony.

»If we are to manage the transition to a sustainable society and achieve the set climate goals, we need to protect and govern what we have,« says Lars Johansson, Head of department. With the new subject area, established by the LTV Faculty, the department also wants to implement a stronger element of landscape management into the education of landscape architects and landscape engineers.

Marcus Hedblom has a background in ecology and nature conservation but has

worked interdisciplinary over the past decade. A common theme has been to bridge planning, shaping and managing environments, so that they benefit both people and biodiversity.

The completely new professorship allows a certain degree of freedom in determining the direction for the future.

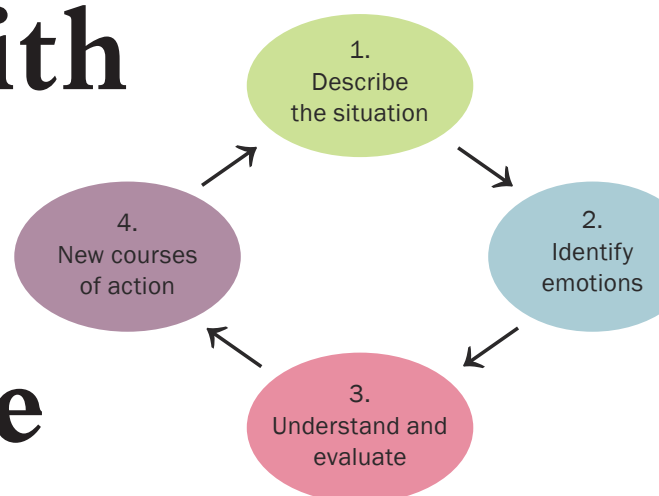
»I want to develop and expand the subject in terms of research, and integrate it further into teaching and also strengthen the relation to collaboration,« says Marcus Hedblom. ■



PHOTO: FREDRIK FUNCK

MARCUS HEDBLOM, THE NEW PROFESSOR IN LANDSCAPE ARCHITECTURE WITH A FOCUS ON LANDSCAPE MANAGEMENT.

Collaboration with urban planners in developing a tool for reflective practice



Researchers at the Division of environmental communication have, in collaboration with urban planners in Uppsala municipality, developed a tool for reflective practice—The Reflection cycle (Reflektionscykeln).

Martin Westin, Amelia Mutter, Fanny Möckel and Camilo Calderon from SLU and Alexander Hellquist from Uppsala university are engaged in ongoing collaboration with urban planners in Uppsala municipality in view of supporting the development of the Gottsunda district. The collaboration has resulted in development of a tool for reflective practice (*Reflektionscykeln*) and a scientific paper published in the Nordic Journal of Urban Studies.



PHOTO: VIKTOR JACOBSSON.

MARTIN WESTIN, RESEARCHER AT DIVISION OF ENVIRONMENTAL COMMUNICATION, WITH A FOCUS ON COLLABORATION AND LEARNING RELATED TO COMPLEX AND CONTESTED SOCIETAL CHALLENGES, SO CALLED WICKED PROBLEMS.

The Reflection cycle was developed through a series of focus groups based on stories shared by two of the city planners. This tool was initially intended to be used by planners to draw lessons from previous difficult experiences of collaborative planning. However, the tool can also be applied in other areas, to develop leadership by reflecting on significant situations and experiences and examining how one could and should act.

The tool includes a structured process where planners (i) describe the situation at hand without valuing it; (ii) identify the emotions at play; (iii) describe and evaluate the actions taken and (iv) identify new action alternatives.

The work is part of the research programme *Mistra Environmental Communication*. ■

Westin, M. (2021). »Let us be led by the residents«: Swedish dialogue experts' stories about power, justification and ambivalence. *Nordic Journal of Urban Studies*, 1 (2), ss. 113-130.

Artikeln finns att läsa här: pub.epsilon.slu.se/26364/1/westin_m_et_al_211221.pdf

Lessons learned from Sweden's development cooperation with Afghanistan



STREET VIEW FROM A SMALL MARKET TOWN IN BADAKSHAN, NORTH-EASTERN AFGHANISTAN.

Afghanistan was Sweden's largest country aid programme before the Taliban takeover in August 2021. What conclusions and lessons might Sweden draw from its long term engagement in the country?

The Afghanistan intervention after 2001 was ambitious but flawed. It challenged Sweden's ability to pursue its principles. It failed to achieve the outcomes that it wanted. Part of the problem was Sweden's strategies. They were strong on a vision of a future Afghanistan but lacked understanding of its history or how interventions engaged with the way things worked. Sweden contributed to improving the supply of basic health and primary education and these will have long term benefits.

ADAM PAIN, RESEARCHER AT DIVISION OF RURAL DEVELOPMENT. HE HAS WORKED WITH THE AFGHANISTAN RESEARCH AND EVALUATION UNIT (AREU) IN KABUL SINCE ITS FOUNDATION IN 2001. HE HAS LED LONG TERM RESEARCH PROGRAMMES FUNDED BY THE EU AND THE UK GOVERNMENTS ON RURAL LIVELIHOODS UNDER CONDITIONS OF INSECURITY AND THE RURAL ECONOMY. HE IS CURRENTLY PART OF A RESEARCH TEAM LED FROM THE SCHOOL OF ORIENTAL AND AFRICAN STUDIES, LONDON INVESTIGATING DRUGS AND BORDERLAND ECONOMIES.



PHOTO: THORA PAIN.

But projects designed to address and reduce the country's many deficits – the lack of gender equality, limited access to education and health, the absence of democracy and low levels of poverty had less effect. They focussed on technical means and top down approaches to address complex social behavioural change issues that were not fully understood.

Many Afghan live under conditions of acute physical, emotional and nutritional insecurity. They do not have freedom from fear, and to survive they live under conditions of dependent security on others, primarily the family and community. This limits individual abilities to exercise choice, challenging a core assumption of much of Sweden's programming. This can only change incrementally through locally negotiated processes that are not amenable to prescriptive project formulations. ■

Pain, A. (2021). *Punching Above its Weight or Running with the Crowd? Lessons from Sweden's development cooperation with Afghanistan 2002–2020* EBA Working Paper August 2021. The report can be downloaded here: https://eba.se/wp-content/uploads/2021/08/Afghanistan_webb-2.pdf.



MOUNTAIN REINDEER (RANGIFER TARANDUS TARANDUS), DEPICTED IN 1695 (PUBLIC DOMAIN).
ILLUSTRATION FROM THE BOOK. THE IMAGE IS CROPPED.

Self-governance perspective on Sami land use 1550–1800

A new book from the Division of Agrarian History describes how the right to use land was determined among Sami in Sweden, from the middle of the 16th century until the end of the 18th century.

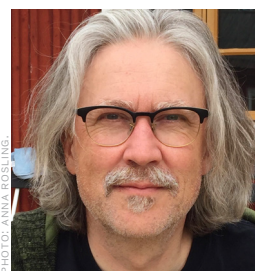
By combining Nobel laureate Elinor Ostrom's theories on collectively used resources, with a close reading of historical source material, the authors show how skillfully and purposefully the Sami negotiated among themselves how the rights to grazing land, fishing waters and hunting areas should be distributed. They also show how different natural conditions, such as forests and mountains, affected the rights of Sami households to different resources.

In the forest areas, the rights to hunt and fish were more exclusive, often with exclusive rights for individual Sami households to catch fish and prey in specific lands and waters. As many Sami households changed to large-scale reindeer

husbandry during the 17th century, the need for summer grazing in the mountains and winter grazing in the forest increased. An intense discussion arose between Sami households about who was entitled to which grazing areas.

The book uses an interdisciplinary approach that not only focuses on the Sami's social organization but also analyzes how the Sami society and the ecological conditions were intertwined. ■

Larsson, J. & Päiviö Sjaunja, E.-L. (2021). *Self-Governance and Sami Communities. Transitions in Early Modern Natural Resource Management*. Palgrave Macmillan. Available for free download: <https://link.springer.com/content/pdf/10.1007%2F978-3-030-87498-8.pdf>.



JESPER LARSSON, ASSOCIATE
PROFESSOR AND SENIOR LECTURER
AT DIVISION OF AGRARIAN HISTORY.



EVA-LOTTA PÄIVIÖ SJAUNJA,
RESEARCHER AT DIVISION OF AGRARIAN
HISTORY.

National project aims at better routines around genetic resources

During the year, the collaboration project Sikta-ABS started at SLU Swedish Biodiversity Centre (CBM). It investigates how regulatory frameworks about genetic resources affect personnel and activities at higher education institutions, as well as needs for support.

As a signatory to the UN Convention on Biological Diversity and the Nagoya Protocol on access and benefit-sharing, Sweden is obliged to consider countries' sovereign rights over their natural resources. The aim is a higher value on biodiversity and a fair and equitable sharing of benefits arising from utilization of genetic resources and knowledge held by indigenous and local communities. The legal meaning of this is interpreted differently between countries; Swedish researchers need to be aware of the implications of a country's legislation but also requirements on how permits and legal agreement processes are documented, as regulated by the EU ABS Regulation (EU 511/2014).

Scarlett Szpryngiel, project manager of Sikta-ABS: »In the beginning of the project, very few had started with work routines or information initiatives about the EU ABS

regulation. But that changed in a flash, we already see a difference. The project has been very well received.«

The target group is mainly research advisory staff and university lawyers.

»Researchers are crucial for supporting each other, but it's not always sufficient. The target group have an interest in the topic and an understanding of both the problem and possible solutions. In addition, they are not intimidated by processes of administrative law and processing routines,« says Scarlett.

At the end of 2021, the planning was in full swing and activities for exchange of experience and knowledge between universities scheduled. ■

Swedish Initiative for ABS Knowledge Transfer within Academia — Sikta-ABS
Read more on the project website: <https://www.slu.se/sikta-abs/>

SCARLETT SZPRYNGIEL, RESEARCHER AT SLU SWEDISH BIODIVERSITY CENTRE, WORKS TRANSDISCIPLINARY WITH RESEARCH, INVESTIGATION, EDUCATION AND COLLABORATION ASSIGNMENTS. SHE HAS A SPECIAL INTEREST IN ISSUES CONCERNING BIODIVERSITY AND HOW WE HUMANS RELATE TO IT IN OUR EVERYDAY LIVES. SCARLETT COMBINES KNOWLEDGE-BASED WORKING METHODS FROM THE ACADEMY WITH PERSPECTIVES FROM THE CULTURE AND NATURE CONSERVATION SECTOR.



PHOTO: ANNIKA BORG



COURSE PARTICIPANTS IN VÄXJÖ. A SESSION ABOUT LEARNING SWEDISH WITH NATURE AS A CLASSROOM. THEY ARE LOOKING FOR OBJECTS THAT ARE ADJECTIVES AND NOUNS, FOR EXAMPLE *PRICKLY* AND *PINE NEEDLE*.

In-demand training of multilingual nature interpreters

In 2021, SLU Swedish Centre for Nature Interpretation (CNV) carried out three courses where the target group was new Swedes. The training was based on the training package for multilingual nature interpreters developed during 2019–2020.

It all took place on behalf of the Swedish Environmental Protection Agency, within the government initiative Nature Close to Work, which aims to increase employability for people who have been outside of the labor market for a long time.

The County Administrative Boards and the Swedish Forest Agency, CNV's partners in the project, testify to the very positive response from the participants. Gaining an increased knowledge of Swedish nature and understanding how they themselves can pass on the knowledge to others, has really strengthened the participants. There has been a high demand for further courses, and CNV is planning a continuation in 2022.

»It is important to have multilingual interpreters with a background in other

countries. Nature interpreters who know both Swedish and their own mother tongue, act as bridge-builders between Swedish society and newly arrived groups. Being able to identify with the person standing in front of you and ask questions in your own language, about nature and its various phenomena, is important! It makes the culture, nature and society more intelligible,« says Katrin Jones Hammarlund at CNV, who has been working in the education project.

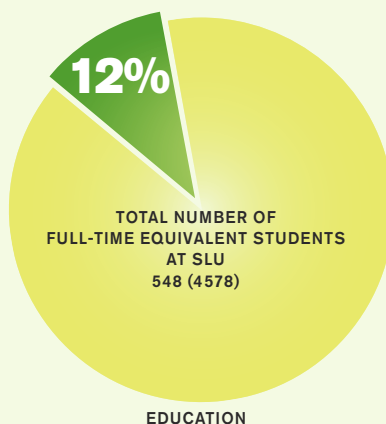
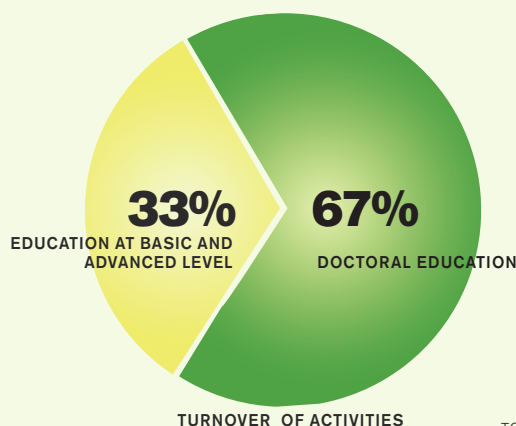
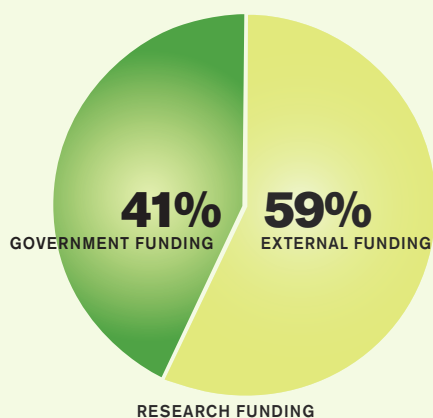
The education project will also in 2022—2023 be part of a new research project at Division of Rural Development: *Migrant Relations and Rural Environments: A neglected dimension of sustainable development*. ■



KATRIN JONES HAMMARLUND, PROJECT LEADER AT SLU SWEDISH CENTRE FOR NATURE INTERPRETATION (CNV), WORKS WITH NATUR INTERPRETATION, ACCESSIBLE NATURE AREAS, CLIMATE, MARINE ENVIRONMENTS AND SUSTAINABLE URBAN DEVELOPMENT.

Facts & Figures

- » Education at basic and advanced level
- » Doctoral education
- » Research schools
- » Awards
- » Research projects
- » Publications
- » Conferences organised at the department
- » The department in the media
- » Representation within SLU
- » Financial performance



173
TOTAL TURNOVER MSEK

169
STAFF MEMBERS

548
FULL-TIME EQUIVALENT STUDENTS

24
NUMBER OF ACTIVE DOCTORAL STUDENTS

7
EDUCATION PROGRAMMES

2
RESEARCH SCHOOLS

Education at basic and advanced level 2021

Within the main subjects: environmental science, landscape architecture and rural development

Full-time equivalent students (HST): 548

Annual performance equivalent (HPR): 482

Supervised/examined Bachelor's theses in: Environmental science: 2 Landscape architecture: 37 Rural development: 19

Supervised/examined Master's theses in: Environmental science: 24 Landscape architecture: 38 Rural development: 20

Programmes

Landscape Engineer, 3 years

Rural Development—Societal Change, 3 years

Political Science—Sustainable Development, 3 years

Landscape Architect—Uppsala, 5 years

Environmental Communication and Management, international Master's programme, 2 years

Rural Development and Natural Resource Management, international Master's programme, 2 years

Landscape Architecture for Sustainable Urbanisation, international Master's programme, 2 years

Doctoral education 2021

Within the subjects: agrarian history, environmental communication, landscape architecture and rural development

Director of studies: Ann Grubbström, Researcher at Division of Environmental Communication

Total number of active students: 24

Agrarian history: 3 Environmental communication: 5 Landscape architecture: 13 Rural development: 5

Number of doctoral dissertations: 3 Number of licentiate theses presented: - Number of admitted licentiate students: -

Number of doctoral degrees: 6 Number of admitted doctoral students: 4 Number of 50% seminars held: 4

Associate Professor's (Docent) Degrees

Andrew Butler, Landscape architecture

Harry W Fischer, Rural development

Research schools 2021

The research school Society and Landscape

Director of studies: Emil Sandström, Senior Lecturer at Division of Rural Development

COURSES

Rural Development in the Global South, 7.5 hp. Course leaders: Harry Fischer and Flora Hajdu (17 students)

Uneven Geographical Development, 5 hp. Course leaders: Örjan Bartholdson, Don Mitchel and Katarina Landström (13 students)
(Collaboration with Department of Social and Economic Geography at Uppsala University)

Methods of Analysis: Narratives and Discourses, 6 hp. Course leaders: Seema Arora Jonsson and Arvid Stiernström (4 students)

A short introduction to Geographic Information Systems (GIS) with a focus on making choropleth maps, 3 hp.
Course leader: Brian Kuns (6 students)

Analytical Writing, 5 hp. Course leaders: Andrew Butler and Harry Fischer (10 students)

Creative Research Methodologies for Urban Contexts, 7.5 hp. Course leader: Burcu Yigit Turan (24 students)
(Collaboration with LTV Faculty Research School)

The research school Social Science Perspectives on Sustainable Development (SSPSD)

A collaboration with the Department of Economics, SLU

Director of studies: Gordana Manevska-Tasevska, Associate Professor at Department of Economics

COURSES

Theoretical topics, 7,5 hp (6 students)

Cross-disciplinary perspectives, 2 hp (9 students)

Scientific writing, 3 hp (5 students)

ACTIVITIES

Seminar: How to become a postdoc (Collaboration with other Research Schools at NJ Faculty) (20 participants)

Seminar: Legacy or driver's license — what does it mean writing a PhD thesis (10 participants)

Seminar: The PhD defence is approaching (10 participants)

Seminar: How to present your work, and how to keep the audience attention (8 participants)

Workshop: Finish on Time: Academic productivity and stress management — the road to effectiveness
(Collaboration with the Research School Sustainable Biomass Systems) (17 participants)

Mobility support (5 participants)

Awards 2021

ULTUNA STUDENT UNION'S PEDAGOGICAL PRIZE

Kjell Hansen, Associate Professor and Senior Lecturer at Division of Rural Development.

UPPSALA MUNICIPALITY'S ANNUAL THESIS SCHOLARSHIP

A Blue-green Development: A design proposal with focus on bluegreen infrastructure concerning the planned district Jakobsberg in Karlstad, by Ylva Ulfbecker and Susanne Hasselberg, students at the Landscape architect programme. Supervisor: Per G Berg.

Regenerative Design: A design proposal for a residential area in södra Gunsta, Uppsala, by Sunniva Wejlemark and Josefin Vidén, students at the Landscape architect programme. Supervisor: Antoinette Wärnbäck.

RAMBÖLLS PRIZE FOR BEST STUDENT THESIS WITHIN LANDSCAPE ARCHITECTURE

Enhanced nature experience: The design element's ability to enhance the experience of natural environments, by Olof Olterman Arvidsson, student at the Landscape architect programme. Supervisor: Gudrun Rabenius.

GLOBAL SWEDE 2021

Semhal Mehari Hadgu, student at the two-year international Master's programme Landscape Architecture for Sustainable Urbanisation.

Research projects 2021

Active projects during 2021

(ordered by subject, project leader at the department)



NEW PROJECTS (GRANTED FUNDING DURING 2021)

61.7 MSEK
IN NEW RESEARCH
GRANTS **2021**

SUBJECT/UNIT	LEADER	PROJECT TITLE & DESCRIPTION	FUNDING	PERIOD
Agrarian History	Martin Andersson	The Rural Working Poor in Sweden, 1300-1600 This project aims at studying how coercive labour institutions structured the rural economy in medieval and early modern Sweden, and will answer the questions of how such institutions were created, upheld, and ideologically justified, as well as how the occupational structure of the rural working poor varied over time and between different regions. (International post-doc.)	The Swedish Research Council (Vetenskapsrådet)	2021–2023
Agrarian History	Jesper Larsson	Cultural History Studies with a focus on Landscape and Settlement History The project studies self-management and globalisation, rural land exploitation and settlement development during the 17 th century Northern Scandinavia.	The Royal Swedish Academy of Letters, History and Antiquities/ Vice-Chancellor, SLU	2015–2021
Agrarian History	Jesper Larsson	Self-Governing and Sami Communities, Transitions in Early Modern Natural Resource Management The project analyses institutional change in natural resource governance in early modern (1550–1780) Sami communities, mainly in Lule Lappmark, Sweden.	The Swedish Research Council (Vetenskapsrådet)	2019–2021
Agrarian History	Patrick Svensson	Social differentiation and economic inequality in Stensjö hamlet This project deals with the rural population during the nineteenth century agricultural and industrial revolutions. During periods of growth and transformation, people's living conditions and living standards were affected. Moreover, to understand how these massive changes were brought about it is necessary to study also the local level, how individuals and households acted and reacted.	Dr. Carl Kempes stiftelse/ The Royal Swedish Academy of Letters, History and Antiquities	2020-2021
Agrarian History	Patrick Svensson	Micro meets macro: peasant diaries and the transformation of Sweden 1840–1920 The project studies a local rural context and its members over the agricultural and industrial revolutions using peasant diaries and other sources. It addresses our overall view of societal transformations generally, this period specifically, and the role of the people living their lives in the midst of change.	The Swedish Research Council (Vetenskapsrådet)	2021–2024
Environmental Communication	Hanna Bergeå	Communication between Hope and Ambiguity: Coordination in transformation of food systems towards circular economy The project investigates how the circular economy (CE) is made sense of in food systems, and suggests methods to facilitate constructive collaboration between multiple players.	Swedish Research Council for Sustainable Development (Formas)	2019–2022
Environmental Communication	Camilo Calderon	A Balancing Act between Swift and Slow Planning: Reimagining deliberative planning in view of the urgency of sustainability challenges This project investigates planners' attempts to balance equally important, yet seemingly contradictory, demands for 'swift' and 'slow' planning. Findings will be used to help design innovative deliberative processes capable of balancing efficiency and deliberation; and to develop deliberative planning theory in view of the urgency of sustainability challenges.	Swedish Research Council for Sustainable Development (Formas)	2019–2022
Environmental Communication	Anke Fischer	Mistra Environmental Communication: Reframing communication for sustainability A four-year research programme that aims to reframe environmental communication, i.e., to mainstream an advanced and inclusive understanding of environmental communication in research, policy and practice such that it can effectively underpin and foster sustainability transformations.	Swedish Foundation for Strategic Environmental Research (Mistra)	2019–2023

SUBJECT/UNIT	LEADER	PROJECT TITLE & DESCRIPTION	FUNDING	PERIOD
Environmental Communication	Anke Fischer	RALENTIR: Reducing land degradation and carbon loss from Ethiopia's soils to strengthen livelihoods and resilience Using several case study areas in Ethiopia, this project aims to improve the design of measures to combat land degradation to enhance local benefits, particularly to marginal population groups, in ways which are seen as equitable and just by the community.	UK Economic & Social Research Council (UKRI-Global Challenge Research Fund)	2019–2022
Environmental Communication	Anke Fischer	Governance, Justice and Resistance: On the way to a fossil-free welfare society The project aims to develop an integrated vision for transition governance that is more likely to be socially accepted and effective.	Swedish Research Council for Sustainable Development (Formas)	2019–2022
Environmental Communication	Lars Hallgren	Beyond Idealistic Glorifications and Categorical Rejections: The co-construction of meaning in dialogue practices in natural resource management The premise of this project is that consultation is a legitimate part of modern natural resource management but we need further understanding of how the communication in a consultation actually works in order to assess the conditions are required where they really contribute to the management in a relevant way, and how consultations should be designed to fulfill realistic goals and at the same time interest both organisers and participants. The objective of this project is to develop this foundation. (Leader of a Work Package in the programme)	Swedish Research Council for Sustainable Development (Formas)	2017–2022
Environmental Communication	Sara Holmgren	Governing the Bioeconomy Transition: Actors, values and trade-offs The aim of this project is to investigate how different stakeholders in the Swedish forest sector perceive the bioeconomy transition, and how different bioeconomy pathways affect different stakeholders. Gaining this knowledge facilitates a more legitimate governing of the bioeconomy transition, where different forest values and interests are balanced in inclusive and transparent decision-making processes. (Cooperation with Linköping University)	Swedish Research Council for Sustainable Development (Formas)	2017–2023
Environmental Communication	Sofie Joosse	Greening Urban Lifestyles through Nudging and Participation In this project we study two governance strategies—nudging and participation—that are thought to be able to advance sustainable urban lifestyles. We investigate power, ethics and potential for change of these governance strategies, and if and how the strategies can be combined. We do so through living labs. The results are meant to inform city planning.	Swedish Energy Agency (Energimyndigheten)	2018–2021
Environmental Communication	Annette Löf	SVALUR—Understanding Resilience and Long-Term Environmental Change in the High Arctic: Narrative-Based Analyses from Svalbard Brings together detailed knowledge and experiences of people living, working and exploring different parts of Svalbard, using in-depth interviews, document analysis and web-based story mapping. We then compare this information with data from environmental monitoring and bring this together through new research methods. (Leader of a Work Package in the programme)	Belmonte	2020–2022
Environmental Communication	Annette Löf	ReiGN—reindeer husbandry in a globalising North The overall aim is to understand how climate change and other processes in the Arctic will affect reindeer husbandry in Fennoscandia and how the industry can adapt to these drivers. (Leader of a Work Package in the programme)	Nordforsk	2016–2021
Environmental Communication	Annette Löf	ReaD-FIRE—Researching and Decolonizing: Forest fires and indigenous landscape relations Our project, ReaD-FIRE, aims to investigate the consequences of forest fires from Sami landscape perspectives and explore if, and if so how, the transformative potential of forest fires can be harnessed and extended to dealing with landscape imbalances and thus contribute in decolonizing the Swedish boreal forest.	Swedish Research Council for Sustainable Development (Formas)	2020–2022
Environmental Communication	Helena Nordström Källström	Research programme Mistra food Futures The overarching vision of the programme is to create a science-based platform to enable transformation of the Swedish food system into one that is sustainable (in all three dimensions: environmental, economic and social), resilient and delivers healthy diets). WP2: Setting targets and identifying barriers & WP7: Developing strategies for transformation. (Collaboration with Research Institutet RISE & Stockholm Resilience Centre at Stockholm University)	Swedish Foundation for Strategic Environmental Research (Mistra)	2020–2023

SUBJECT/UNIT	LEADER	PROJECT TITLE & DESCRIPTION	FUNDING	PERIOD
Environmental Communication	Stina Powell	To Stop Counting Bodies: New ideas for a gender equal forest sector This project concerns how we can achieve gender equality in the forestry sector, focusing on SLU's forestry courses and programmes. The idea is to develop more knowledge about what gender equality means to different groups instead of counting bodies. In this way, we want to challenge what gender equality within forestry actually means.	The Swedish Forest Society Foundation (Stiftelsen Skogssällskapet)	2018–2021
Environmental Communication	Stina Powell	The Value of Stakeholder Participation in Collaborative Research Projects for Sustainable Development: A gender and intersectional analysis Applying gender and intersectional analysis, this research studies three sustainable development research projects ostensibly based on collaborative approaches. This research examines the collaborative objectives and methodologies of these projects. This will reveal insights into using collaborative research approaches to improve the design of future research projects and improve practical application.	Swedish Research Council for Sustainable Development (Formas)	2018–2021
Environmental Communication	Kaisa Raitio	Constructivity and destructivity in NRM conflicts The project aims at developing an analytical framework and methodology for understanding the role of communication and institutions in transforming conflicts.	Swedish Research Council for Sustainable Development (Formas)	2015–2021
Environmental Communication	Kaisa Raitio	Decolonizing Land use Planning: Reimagining Sami-state relations in Sweden and Finland (RE-LAND) This project seeks to understand what decolonization could entail for the everyday practice of land use planning in Sami lands.	Swedish Research Council for Sustainable Development (Formas)	2019–2021
Environmental Communication	Lotten Westberg	Making Sense of Adaptation: The adaptation practice in a governance perspective The project is structured in three, interrelated, parts: zooming in on the adaptation practice to develop understanding of how it is enacted and why; zooming out focusing on how governance struggles and choices are handled (and which are not) and the potential implications for adaptation governance; looking forward by providing input for climate adaptation action.	Swedish Research Council for Sustainable Development (Formas)	2017–2021
Environmental Communication	Martin Westin	Collaboration, Deliberation and Participation in Times of Post-truth Politics: The role of dialogue experts This project aims to analyze, clarify and reformulate the ambivalent relationship between dialogue, expertise and power in the management of change work.	Swedish Research Council for Sustainable Development (Formas)	2022–2024
Environmental Communication	Erica von Essen	License to Cull: Rural and urban geographies of wild animal culling In the study, we unpack the values and calculations (necropolitics) on which pest controllers and hunters rely when they cull undesirable animals in urban and rural geographies respectively. We ask: what values, norms and knowledges guide pest controllers and hunters engaged in culling?	Swedish Research Council for Sustainable Development (Formas)	2020–2023
Environmental Communication	Erica von Essen	Challenges Facing Swedish Hunting Ethics in Post-Modernity The purpose of this research is to outline, deconstruct and problematise the contemporary Swedish hunting ethic and the principal challenges that presently, and in the future, face it.	Viltvårdsfonden / Swedish Environmental Protection Agency	2018–2021
Landscape Architecture	Mattias Qviström	Sustainable Leisure Mobilities in Compact Towns: Changing patterns of outdoor recreation in transit-oriented development (TOD) The project aims to acknowledge the history of the welfare planning and its current role for sustainable TODs, reveal the current use of places for active outdoor recreation of the TOD inhabitants, and explore the possibilities to encourage sustainable mobilities in (TODs), with special emphasis on green structure planning.	Swedish Research Council for Sustainable Development (Formas)	2017–2022
Landscape Architecture	Mattias Qviström	The Welfare Landscape Reassembled: Policies for sustainable outdoor recreation in times of urban densification The project studies the heritage of the welfare state, the welfare landscape, and how it's values can be secured in densification projects.	Swedish Research Council for Sustainable Development (Formas)	2016–2021

SUBJECT/UNIT	LEADER	PROJECT TITLE & DESCRIPTION	FUNDING	PERIOD
Landscape Architecture	Josefin Wangel	Local solar energy communities—a way towards strengthened energy democracy? This project examines the conditions for local solar energy communities to contribute to strengthened energy democracy and increased social sustainability in Sweden. Through case studies and policy analysis we explore what forms of local solar energy communities that contemporary society enables and supports, and if there are any connections between different organisational form and the types of actors that are engaged. (Collaboration with Tema T, Linköping University)	Swedish Energy Agency	2020–2023
Landscape Architecture	Josefin Wangel	Gendered Sustainability: Norm-critical explorations of energy practices for everyday transitions The project explores energy-related structures, practices and everyday decision-making in and between households. The overarching aim of the project is to, through an ethnographic and norm-critical design approach, explore and suggest alternative everyday practices with radically decreased resource use. (Cooperation with KTH Royal Institute of Technology)	Swedish Energy Agency	2018–2021
Landscape Architecture	Carola Wingren (PI from Sweden)	Cemeteries and Crematoria as public spaces of belonging in Europe: A study of migrant and minority cultural inclusion, exclusion and integration The project examines eight large NW European municipalities across six countries, with the purpose of improving understanding of varied meanings, uses and practices through dialogue and co-production of management strategies. This will enhance cross-cultural understanding and interaction, and inform planning for diversity-ready cemeteries. (EU funded HERA project—a collaboration with England, Netherlands, Luxembourg, Norway and Sweden)	The Swedish Research Council (Vetenskapsrådet) (Swedish financier)	2019–2021
Landscape Architecture	Carola Wingren	Mobile Necropolis: The potential, effects and meaning of large scale move of human remains in Sweden The project will contribute to strategies for future relocation of burial sites, by analysing the scale, the problems and impacts of these relocations, and how they can be integrated with people's needs for place identity, individual memories and cultural heritage. (Collaboration with Umeå University)	Swedish Research Council for Sustainable Development (Formas)	2021–2023
Landscape Architecture	Burcu Yigit Turan	Norra Sorgenfri Planned, Populated and Problematised: The role of social sustainability in urban renewal An analysis of the role of social sustainability in the transformation of an urban industrial area in the city of Malmö, Sweden.	Swedish Research Council for Sustainable Development (Formas)	2018–2021
Rural Development	Seema Arora-Jonsson	Migrant Relations and Rural Environments: A neglected dimension of sustainable development The project analyses how migration is changing rural Sweden and through that, the pre-conditions for sustainability and social justice. Focusing on social-environmental relations, the project investigates how migration and nature-based integration could contribute to a sustainable rural development in Sweden.	Swedish Research Council for Sustainable Development (Formas)	2022–2025
Rural Development	Seema Arora-Jonsson	Climate Transitions in Contested Forests: Justice and governance in digital times The project puts the people in focus and investigates how a just and sustainable future forest is possible, in places where the conflicts are both complex and intractable. It does so by studying three cases that highlight different regional and biophysical conditions and forest contestations in relation to climate transitions: nature conservation, reindeer husbandry, mining and wind-power, and the question of who is to be included in the decision-making.	Swedish Research Council for Sustainable Development (Formas)	2021–2025
Rural Development	Ildikó Asztalos Morell	JUSTNORTH: Empowering Equitable and Robust Indigenous Economy through Indigenous Entrepreneurship in the Swedish & Russian Arctic The main purpose of the case study is to enhance the understanding of ethical and value systems of the actors engaged in indigenous economic activities in Russia's Arctic region (with a focus on the Murmansk Region) and to conduct a survey with the same questions in northern Sweden among Sami reindeer herders, where national quotas on reindeer herding place pressures on its future sustainability.	Horizon2020	2020–2023
Rural Development	Ildikó Asztalos Morell	Reindeer Herding: An indigenous food system in transition The project focuses on three reindeer herding indigenous groups: Sápmi in Sweden and Finland, Nenets in Russia. We aim to facilitate indigenous reindeer herders' agency, abilities and ownership of the commodification of reindeer products, increase the awareness and knowhow about traditional food systems and their importance to Nordic food security for the Reindeer herding: An indigenous food system in transition wider public.	SLU FutureFood	2020–2021

SUBJECT/UNIT	LEADER	PROJECT TITLE & DESCRIPTION	FUNDING	PERIOD
Rural Development	Malin Beckman	Integrated methods for climate resilience in the mountain areas of South East Asia The project studies factors influencing the extent to which farmers, communities and local governments include integrated land use (e.g. agroforestry) in their efforts towards adapting to, and mitigating climate risk. Collaboration with World Agroforestry Centre and Hue University in Vietnam.	The Swedish Research Council (Vetenskapsrådet)	2022–2023
Rural Development	Linley Chiwona Karlton	Engendering Rural Transformation for Sustainable Development (ENTRUST) The overall development goal of ENTRUST is to contribute to broad-based national transformation through post-graduate research training and capacity development in collaboration with University of Rwanda.	Swedish International Development Cooperation Agency (Sida)	2019–2024
Rural Development	Linley Chiwona Karlton	Engendering Agribusiness Entrepreneurship (ENGAGE) A postgraduate research training program in cooperation with University of Dar es Salaam Business School, Tanzania.	Swedish International Dev.Coop. Agency (Sida)	2015–2021
Rural Development	Linley Chiwona Karlton	Market Driven Afforestation: Trajectories in social resilience and environmental sustainability under land-use intensification The aim of the project is to identify and describe positive and negative trajectories in (i) rural household income and gender equity, (ii) agricultural production and food security, (iii) water-balance at landscape level and downstream, (iv) carbon sequestration in biomass and soil at landscape level and (v) soil fertility and long-term sustainability of agricultural and forest production, in the Amhara region in Ethiopia. (Cooperation with Department of Soil and Environment, SLU)	The Swedish Research Council (Vetenskapsrådet)	2019–2021
Rural Development	Nathan Clay	AFTER—Agri-Food Transformation for Equitable Resilience: Towards social, economic, and environmental sustainability in Spain's almond sector The project studies how food system actors, institutions and policies, can bring about equitable food system transformation. The project examines the almond sector in Spain—rapidly changing due to the global increase in demand for nuts by consumers seeking healthy and sustainable food.	Swedish Research Council for Sustainable Development (Formas)	2022–2025
Rural Development	Patrik Cras	Civil society, collaborative governance platforms and local climate change policy The project investigates how climate focused local collaborative governance platform influence roles and functions of civil society organisations with a climate agenda—what practices in methods, approaches and strategies for collaborative work, as well as visions for future new ways of working, can be identified among the participating organisations?	MUCF—Swedish Agency for Youth and Civil Society	2022–2024
Rural Development	Alexandre Dubois	Innovation far from Major Growth Centres: Policy and Practice to support economic development in Europe's northern periphery How appropriate are theoretical perspectives developed in core regions when applied to the study, policy and practice of innovation in the periphery? This question will be answered by this project, which proposes two case studies of peripheral regions in the far north of Europe and thereby contributing to a re-balancing of the discourse around regional innovation and establish the periphery as a crucial element in our overall conception of economic development.	Swedish Research Council for Sustainable Development (Formas)	2019–2021
Rural Development	Alexandre Dubois	Farming Futures in Borderline Communities of Sweden and Australia The project investigates how changing local climatic conditions and urbanisation affects the transformation of agriculture-community linkages (ACL) in small communities that are located on critical climatic 'lines'.	Swedish Research Council for Sustainable Development (Formas)	2018–2021
Rural Development	Linda Engström	Towards land equality? Exploring how cancelled land deals affect smallholder farmers' land access and livelihoods in Eastern Africa. (Collaboration with University of Dar es Salaam)	The Swedish Research Council (Vetenskapsrådet)	2022–2024
Rural Development	Harry Fischer	Institutional Networks and Self-organized Adaptation: Tracing the democratic architectures of climate response This project develops the concept of self-organized adaptation to explore how democratic political systems—comprised of multiple actors, institutions, and forms of state support—shape local responses to climate risk and change in Himalayan Nepal and India.	The Swedish Research Council (Vetenskapsrådet)	2019–2021

SUBJECT/UNIT	LEADER	PROJECT TITLE & DESCRIPTION	FUNDING	PERIOD
Rural Development	Harry Fischer	Creating evidence for forest based resilience during Covid-19 The project studies the role of forests in contributing to livelihood security at a time of unprecedented distress in order to identify policy mechanisms that can help build more secure and sustainable human-environment systems over the longer term.	Swedish Research Council for Sustainable Development (Formas)	2020–2021
Rural Development	Harry Fischer	Impacts of the COVID-19 Pandemic on Forest Resource Use by Rural Communities in India This project aims to study the role of forest policy in helping to promote more secure and sustainable livelihoods in the context of the present shock, by building on an existing large dataset on forest use in north India.	Swedish Research Council for Sustainable Development (Formas)	2020–2021
Rural Development	Klara Fischer	Improved Disease Control by Community Participation: The case of African swine fever in northern Uganda Using multidisciplinary participatory methods, this project investigates the multiple reasons for farmer's responses to disease, such as social pressures, poverty-related constraints, and lack of health and veterinary infrastructure. The project seeks to enable more effective policies for disease control, including promotion of control interventions that are feasible to self-sustainably implement. (Collaboration with Swedish National Veterinary Institute SVA)	The Swedish Research Council (Vetenskapsrådet)	2018-2021
Rural Development	Noemi Gonda	Exploring Governance Regimes through Agricultural Land Grabbing Dynamics This three-year project investigates to what extent agricultural land grabbing processes affecting rural areas are inserted in broader governance struggles over power relations and identities. Case studies are in Hungary and Nicaragua.	Swedish Research Council for Sustainable Development (Formas)	2019-2021
Rural Development	Marien González Hidalgo	Learning from forest fires: Analysing unequal impacts, well-being and local knowledge and action An analysis of how forest fires unequally shape the well-being of local communities in three cases in Sweden, Spain and Chile.	Swedish Research Council for Sustainable Development (Formas)	2021–2024
Rural Development	Flora Hajdu	»We are Planting Trees in Africa«: Swedish discourses and local effects of carbon forestry projects in African localities The project explores how Swedish consumers and actors perceive carbon compensation-motivated tree planting projects in African localities, and how imagined local social impacts relate to the realities in host countries.	Swedish Research Council for Sustainable Development (Formas)	2019–2024
Rural Development	Flora Hajdu	Towards more Sustainable Consumption of Carbon Emissions: A tool for assessing social dimensions of carbon forestry in low-income countries In close collaboration with Swedish private and public actors, the project aims to develop a practically useful tool for integrating relevant social scientific knowledge into assessments of the social consequences of tree planting projects in low-income countries, thereby facilitating the possibility for these actors to control that their consumption of carbon emission reductions do not have negative local consequences, as well as securing that the expected carbon uptake is not over-estimated.	Swedish Research Council for Sustainable Development (Formas)	2019–2022
Rural Development	Alin Kadfak	Sweatshops at Sea: Labour reform in the Thai seafood supply chain via hybrid global governance The project investigates the implementation of hybrid global governance in the Thai seafood supply chain focusing on labour standards.	Swedish Research Council for Sustainable Development (Formas)	2020–2022
Rural Development	Alin Kadfak	Sustaining fish and fishworkers? Human rights for migrant Burmese fishworkers in the EU-initiated sustainable fisheries reform in Thailand This research project aims to understand how EU's fishing policy, as a global governance mechanism, addresses both sustainability and human rights using Thailand's fisheries reform as empirical case. (Collaboration with University of Gothenburg)	The Swedish Research Council (Vetenskapsrådet)	2019–2021
Rural Development	Stephanie Leder	Revitalizing Community-managed Irrigation Systems in the Context of Out-migration in Nepal This project seeks to identify the pathways through which a greater engagement of marginal groups can help to revitalize collective natural resource management. Such bottom-up processes of change could be a vital part of a long-term transition towards more equal access to resources and improved food security in rural households of the Global South.	Swedish Research Council for Sustainable Development (Formas)	2019–2022

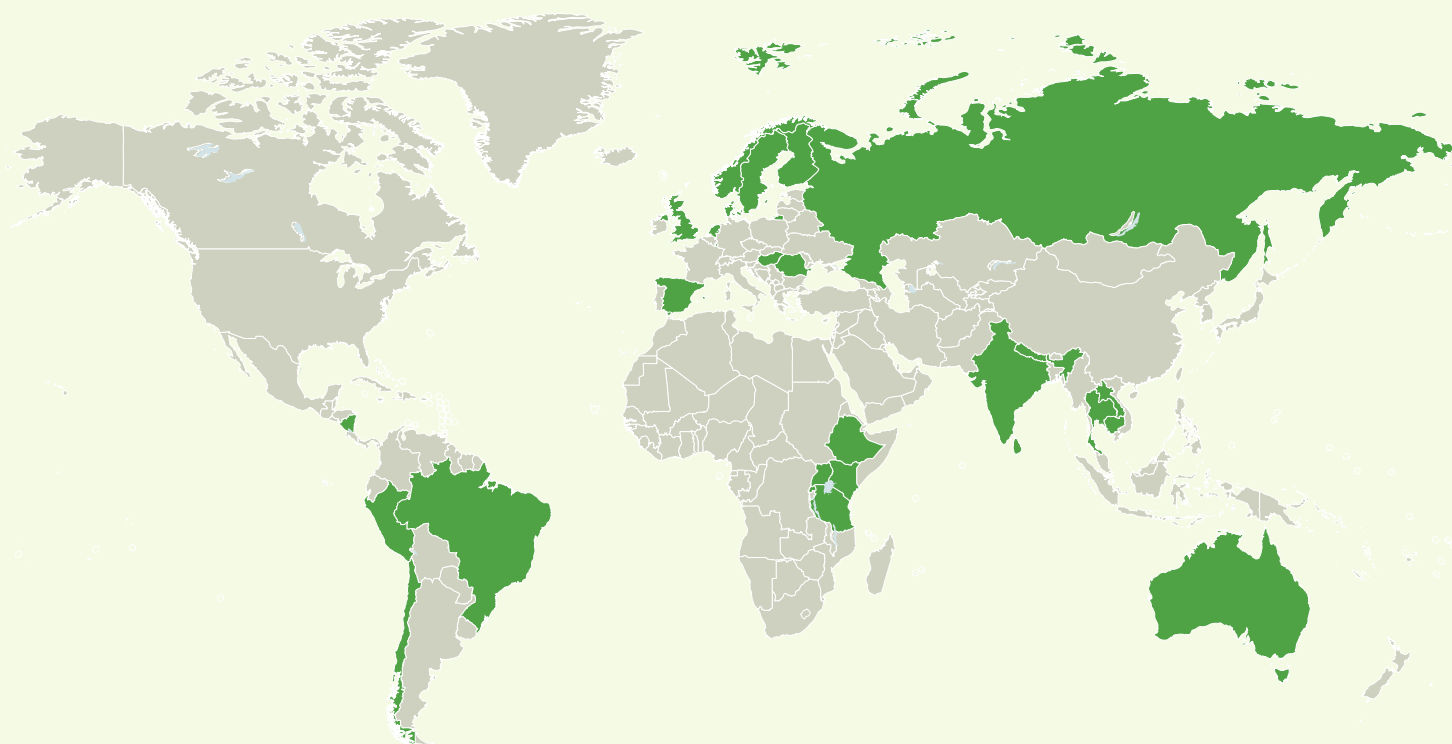
SUBJECT/UNIT	LEADER	PROJECT TITLE & DESCRIPTION	FUNDING	PERIOD
Rural Development	Kristina Marquardt	What is secondary about secondary forest? Building smallholder forest futures in Peru's Amazonian frontier The project investigates what forest futures can be built, by whom and how, at the forest frontiers in the Peruvian Amazon, and what the role of forest conservation policies is in this.	Swedish Research Council for Sustainable Development (Formas)	2021–2023
Rural Development	Kristina Marquardt	The Practice of Resilience in Mountain Landscapes: Exploring risk and landscape investments in rural Nepal This project investigates long-term landscape investments in order to understand how people's landscape use and economic and social structures are mutually constituted with very different outcomes for different social groups in a hierarchical society such as Nepal contributing to the growing body of socio-political nuanced understandings of resilience and adaptive capacity, as well as analyse and reflect on development and environmental changes in an integrated manner.	The Swedish Research Council (Vetenskapsrådet)	2019–2021
Rural Development	Andrea Nightingale	Governing Climate Resilient Futures: Gender, justice and conflict resolution in resource management This research probes the link between gender and social inequalities, conflict, and how they affect sustainable and resilient climate development pathways.	The Swedish Research Council (Vetenskapsrådet)	2019–2021
Rural Development	Patrik Oskarsson	Planning for a just coal energy transition from the ground up: Engaging coalfield communities in India for a fossilfree future This research project engages coalfield communities in India to develop a replicable framework for a just energytransition that is participatory, bottom-up and socially inclusive.	Swedish Research Council for Sustainable Development (Formas)	2022–2024
Rural Development	Patrik Oskarsson	Participatory Environmentalism: Mobilising citizens for air pollution mitigation and improved environmental health in India This project examines the conditions which enable citizens to become actively engaged in pollution control for improved environmental health. It does this by enabling research participants to monitor household air pollution levels for a better understanding of local sources of pollution and personal exposure. The resulting improved knowledge of what pollution is and where it comes from is expected to support community mobilisation to mitigate pollution. The project is expected to add to our understanding of the factors which support citizens becoming active in pollution control and management activities.	Swedish Research Council for Sustainable Development (Formas)	2018–2021
Rural Development	Adam Pain	Access to Land Resources Vulnerability and HIV/AIDS in Tanzania A capacity building programme, that intends to assess the contribution of the existing policies, instruments and legal frameworks on access, use and ownership rights on land resources by people living with HIV/AIDS in Tanzania. (Cooperation with the International Science Programme at Uppsala University)	Swedish International Development Cooperation Agency (Sida)	2015–2021
Rural Development	Adam Pain	Forest and Agrarian Transition, Smallholder Practices and the New Forms of Land Governance: Building research collaboration among Brazil, Nepal and Peru This project supports an existing four country research partnership investigating issues of forest land governance. Joint activities include analytical workshops, field work and networking.	The Swedish Research Council (Vetenskapsrådet)	2018–2021
Rural Development	Katarina Pettersson	Entrepreneurship as Empowerment? Gendered opportunities and challenges in entrepreneurial urban and peri-urban agriculture in Tanzania This project will develop our understanding of entrepreneurial urban and peri-urban agriculture (UPA) in Dar es Salaam, Tanzania and how it is gendered.	Swedish Research Council for Sustainable Development (Formas)	2018–2021
Rural Development	Emil Sandström	Back-to-the-land and the cultivation of a renewed countryside? Exploring the scope and impact of back-to-the-land migration in rural Sweden The project analyses the past decades of back-to-the-land migration in Sweden— its underpinning motives, practices and ideals and discusses its relevance for understanding contemporary rural change in Sweden and for broader food systems transformations?	Swedish Research Council for Sustainable Development (Formas)	2021–2025
SLU Swedish Biodiversity Centre	Johnny de Jong	Bats in Cambodia—Inventory and nature conservation Research collaboration on bats and conservation supporting the work of Royal University of Phnom Penh. (Collaboration with Royal University of Phnom Penh)	Swedish International Development Cooperation Agency (Sida)	2019–2022

SUBJECT/UNIT	LEADER	PROJECT TITLE & DESCRIPTION	FUNDING	PERIOD
SLU Swedish Biodiversity Centre	Johnny de Jong	Bats and insects on high altitude Occurance of bats and insects are measured on 100 meters altitude and are related to the lighting on windmills and the climate variation. (Collaboration with Dept. of Ecology, SLU)	Swedish Energy Agency	–2021
SLU Swedish Biodiversity Centre	Johnny de Jong	Forestry and the quality of habitats for bats Focussing on the relevance of the vegetation structure for bats living in the forest, and how common forestry methods are affecting the habitat quality for the bats.	The Swedish Forest Society Foundation (Stiftelsen Skogssällskapet)	2018–2021
SLU Swedish Biodiversity Centre	Johnny de Jong	Bats and infrastructure Investigating how roads and railroads are barriers for bats in the landscape, and what measures can be taken to counteract negative effects.	The Swedish Transport Administration	–2021
SLU Swedish Biodiversity Centre	Johnny de Jong & Håkan Tunón	Bats in the landscape The project is aiming to produce a hands-on handbook on how to combine consideration of bats, with different types of nature use and infrastructure.	The Swedish Forest Society Foundation (Stiftelsen Skogssällskapet)	2019–2021
SLU Swedish Biodiversity Centre	Urban Emanuelsson	Landscape history of Skåneland An expansion of the book »Det skånska kulturlandskapet«, revised 2002, now expanding to also Blekinge and Halland. (Collaboration with Blekinge Institute of Technology)	Strategic funds, CBM	2017–2022
SLU Swedish Biodiversity Centre	Urban Emanuelsson	Landscape and water color paintings A collection of essays about 70 landscapes, both in Sweden and globally, illustrated with water color paintings by the artist Maria Petersson.		2017–2022
SLU Swedish Biodiversity Centre	Urban Emanuelsson	Sustainable meat production Aims to show how meat production from cattle can be sustainable, from a climate and biodiversity point of view. (Collaboration with Dept. of Department of Soil and Environment, SLU)	Föreningen Naturbeteskött	2014–2022
SLU Swedish Biodiversity Centre	Urban Emanuelsson	Culture heritage farms in south Sweden A book describing the Cultural heritage farms in south Sweden.	Region Skåne	2017–2021
SLU Swedish Biodiversity Centre	Åsa Fahlman	Welfare aspects of trap capture of wild boar The aim of this transdisciplinary project is to study the behavior and physiology (blood sample analysis of chromogranin A, a new biomarker of stress) of wild boar captured in a trap, for improved animal welfare evaluation of live-trapping (Collaboration with Dept. of Clinical Sciences, SLU; Swedish Centre for Animal Welfare, SCAW; Dept. of Animal Environment and Health; Dept. of Ecology, SLU; SLU Grimsö Wildlife Research Station; Dept. of Medical Sciences, Uppsala Univ.; Dept. of Zoology, Stockholm Univ.; Dept. of Pathology and Wildlife Diseases, SVA).	The Swedish Association for the Protection of Animals, Swedish EPA	2018–2021
SLU Swedish Biodiversity Centre	Åsa Fahlman	Improved welfare during capture and immobilization of wild wolves Research and management of wild wolves often include capture and immobilization, which can lead to physiological changes that may influence animal welfare and survival. Data has been collected for evaluation and improvement of handling and will be analysed and published. (Collaboration with SLU Grimsö Wildlife Research Station; Inland Norway University of Applied Sciences; Kolmården Wildlife Park).	Marie-Claire Cronstedts Stiftelse	2020–2022
SLU Swedish Biodiversity Centre	Åsa Fahlman	A One Health approach to strengthening capacities for detection of emerging zoonoses in Asian wildlife and People The project goal is to enhance the capability for detection of zoonotic and emerging pathogens in Asian wildlife and people through surveillance and screening of elephants and wildlife workers for tuberculosis, along with sampling primates and rodents for other zoonotic pathogens. Safe and efficient immobilization techniques are developed to enable optimal sample collection and to ensure human safety and animal welfare during handling of wildlife. The research supports local livelihoods, wildlife resource management and biodiversity conservation. (Collaboration between Dept. of Clinical Sciences, Dept. of Biomedical Sciences and Veterinary Public Health, Dept. of Animal Breeding and Genetics (SLU); Dept. Medicine, Karolinska Institutet; Kolmården Wildlife Park; Swedish Defence Research Agency; Dept. of Clinical Microbiology, Umeå Univ.; Dept. of Medical Microbiology, Faculty of Medicine, Univ. of Kelaniya, Dept. of Wildlife Conservation, Univ. of Peradeniya, Dept. of National Zoological Gardens (Sri Lanka))	Swedish Research Council (Vetenskapsrådet)	2018–2022

SUBJECT/UNIT	LEADER	PROJECT TITLE & DESCRIPTION	FUNDING	PERIOD
SLU Swedish Biodiversity Centre	Maria Forsberg, Johnny de Jong	Landscape Planning for Forest Biodiversity and Diverse Forestry The objective of this interdisciplinary project is to demonstrate a model for legal implementation of a landscape approach in forest management, complemented by the development of new economic policy tools.	Swedish EPA	2016–2021
SLU Swedish Biodiversity Centre	Karin Gerhardt	Sustainable organic bread from heritage cereals: using history to farm the future The aim of the project is to investigate the potential in organically farmed heritage cereals, to contribute to a more sustainable production of tasty and healthy bread and grain products. Are there additional values in the old varieties that the modern grains don't have? (Cooperation with med Kristianstad University, Allkorn and Eldrimner Associations, millers, bakers and farmers)	Swedish Research Council for Sustainable Development (Formas)	2019–2023
SLU Swedish Biodiversity Centre	J-O Helldin	Swedish IENE Secretariat Infra Eco Network Europe (IENE) is a network of experts working with various aspects of transportation, infrastructure and ecology. Their Swedish secretariat is hosted by SLU, and the activities arranged are conferences, workshops, spreading information and knowledge to the members of the network. (Collaboration with med The Swedish Transport Administration, Calluna AB, EnviroPlanning AB)	The Swedish Transport Administration, Calluna AB, EnviroPlanning AB	2019–2022
SLU Swedish Biodiversity Centre	J-O Helldin	TRIEKOL 3 — Applied Road and Rail Ecology A research program of the Swedish Transport Administration (STA) on the impact of transport infrastructure on biodiversity and landscape ecology. The aim is to develop knowledge and methods that can help the transport sector to maintain and, where possible, improve the ecological functions and qualities of the landscape. The work has a direct link with ongoing operations of STA, and the results are used to develop new guidelines, planning new investment projects and in the development of maintenance of existing roads and railways. (Collaboration with Dept. of Ecology and Dept. of Wildlife, Fish and Environmental Studies, SLU; Karlstad Univ.; Enviroplanning AB; Swedish Transport Administration; Eocom AB, Naturcentrum, Calluna AB.)	Swedish Transport Administration	2017–2022
SLU Swedish Biodiversity Centre	Tuija Hilding-Rydevik	Strategic Environmental Assessment of the Swedish Strategic Plan for the Common Agricultural Policy (CAP) 2023-2027 The aim of the project is to promote integration of environmental perspectives in the process of producing the Swedish Strategic plan through a Strategic Environmental Assessment. And to document the work in an Environmental Impact Assessment document according to EU demands. Work was conducted through Professional Management in cooperation with Gunilla Björklund, Mats Denninger, Arne Svensson and Lina Lenefors.	Swedish Board of Agriculture	2020–2021
SLU Swedish Biodiversity Centre	Tommy Lennartsson	Transport Infrastructure and Invasive Alien Species (TRIAS) Together with the Swedish Transport Administration and external researchers at Karlstad University and Mid Sweden University, CBM has developed a 4-year research program on the management of invasive plants in transport infrastructure. The program is an independent program under TRIEKOL. The research will be conducted in close collaboration with the Swedish Transport Administration and, among other things, study projects in the Swedish Transport Administration's ongoing activities as large-scale trials. This may involve controlling invasive plants, maintaining existing roads, or rebuilding / rebuilding infrastructure. Collaboration between actors is also studied in a special project. The results will be implemented to best support the Swedish Transport Administration's work with invasive species.	The Swedish Transport Administration	2021–2024
SLU Swedish Biodiversity Centre	Tommy Lennartsson	EPIC roads: Ecology in practice—Improving infrastructure habitats along roads The project provides an overview of published studies on the established effects of road infrastructure on biodiversity and ecosystem services in transport infrastructure habitats.	Norwegian Institute of Bioeconomy Research (NIBIO)	2018–2021
SLU Swedish Biodiversity Centre	Tommy Lennartsson & Anna Westin	Management of culturally shaped nature A transdisciplinary knowledge investment about ecology, history and landscape management containing courses, knowledge compilation and guidelines for specific habitats and land use types. The over all aim is to obtain better management of biodiversity and cultural heritage through locally adapted knowledge, founded in ecology and history of management dependent habitats. (Collaboration with Swedish National Heritage Board, Swedish EPA, Swedish Forest Agency, County Administrative Boards).	Swedish National Heritage Board & Swedish EPA	2016–

SUBJECT/UNIT	LEADER	PROJECT TITLE & DESCRIPTION	FUNDING	PERIOD
SLU Swedish Biodiversity Centre	Scarlett Szpryngiel & Håkan Tunón	Nagoya Protocol and the EU ABS-Regulation within the Swedish Academia The aim is to encourage knowledge transfer and exchange of experiences regarding the use of genetic resources and traditional knowledge related to genetic resources among Swedish universities. This is the first national attempt to map the needs of the Swedish academia when it comes to the EU ABS Regulation, (EU) 511/2014. The idea is to create platforms for collaboration and develop a correct and relevant material for the use of staff in research support services. The project will highlight working routines that can increase the rule of law and reduce the administrative burden for individuals.	Swedish Environmental Protection Agency	2021–2022
SLU Swedish Biodiversity Centre	Håkan Tunón	Lives of the pioneer settlers in Vilhelmina The project aims to present a systematic view of the use of biological resources among settlers in Vilhelmina, northern Sweden, during 19 th and 20 th century. So far the project has resulted in seven books. (Collaboration with The Royal Gustavus Adolphus Academy for Swedish Folk Culture, and Rolf Kjellström)	Göran Gustafssons stiftelse för natur och miljö i Lappland, among others.	2006–2022
SLU Swedish Biodiversity Centre	Håkan Tunón	The tree book project The aim is to present the biodiversity of some of the most common trees in Sweden. The author has a deep knowledge concerning various organisms that are depending of these trees for their survival, and the books are illustrated with water colour paintings. The visualize the true meaning of biodiversity. During 2022 a book on the biodiversity of oak trees will be published. (Collaboration with Swedish Society for Nature Conservation and Swedish WWF)	The Swedish Forest Society Foundation (Stiftelsen Skogssällskapet), C.F. Lundströms stiftelse	2008–
SLU Swedish Biodiversity Centre	Håkan Tunón & Tuija Hilding-Rydevik	Anthology about biodiversity and ecosystem services The project emanated from the Environmental Protection Agency's scientific council for biodiversity and ecosystem services with the aim to produce a book about Swedish research within the field. The result was an illustrated anthology with more than fifty chapters and spreads addressed from different academic disciplines..	Swedish Environmental Protection Agency	2020–2021
SLU Swedish Biodiversity Centre	Håkan Tunón	Swedish Saami Parliament as thematic focal point for CBD, art. 8j During 2021–2023 the Saami Parliament has a governmental assignment to act as thematic focal point for traditional knowledge and customary use (art. 8(j)). CBM contributes with experiences from Naptek (National Programme for Local and Traditional Knowledge related to Conservation and Sustainable Use of Biological Diversity), a project at CBM between 2006 and 2015. CBM is advising the Saami Parliament in the process and will act as node for non-Saami knowledge traditions.	Swedish Saami Parliament	2021–2023
SLU Swedish Biodiversity Centre	Håkan Tunón (reference group)	Bridging diverse knowledges for improved salmon management (SALCUL) A multidisciplinary and partnership-based research project investigating and comparing different practices, knowledge and values related to Atlantic salmon. The project will develop processes for sharing and co-producing indigenous and local knowledge (ILK) and scientific knowledge based on social science traditions as well the natural sciences.	Norwegian Research Council	2018–
SLU Swedish Biodiversity Centre	Anna Westin & Tommy Lennartsson	Comparative Historical Ecology in European Landscapes Combining anthropology, ecology, bicultural heritage and agrarian history, to advance the historical ecology knowledge on the connections between man and nature, resource use and ecosystemservices in Sweden, France, Rumania and Baskia.	Strategic funds, CBM	2015–
SLU Swedish Biodiversity Centre	Anna Westin & Tommy Lennartsson	Traditional land use, biodiversity, sustainability and local traditions in present Romania and historical Sweden Anthropology, ecology and agrarian history are combined to create understanding of the connections between the use of grasslands and biodiversity, in today's Transsylvania and in pre-industrial Sweden. (Collaboration with National Museum of the Romanian Peasant, Dept. of Sociology, National School of Political Science and Administration, Bukarest)	Strategic funds, CBM	2013–
SLU Swedish Biodiversity Centre	Anna Westin & Tommy Lennartsson	Biological cultural heritage of roads Plants in road verges and old roads is a biological cultural heritage. They are often rich in species that were common in the past landscapes but are now decreasing. Links between species rich road verges and the surrounding landscape, can both contribute with new knowledge in landscape history and better management tools for species conservation. (Collaboration with Swedish National Heritage Board, Swedish Transport Administration)	Swedish National Heritage Board	2020–2021
SLU Swedish Biodiversity Centre	Anna Westin & Tommy Lennartsson	Species rich road verges in a landscape perspective Road verges is an important environment for species that are rare in the today. They may also contain biological cultural heritage from past landscape that were rich in these species. This project studies the significance of present and past landscapes for creating and maintaining road verges rich in biodiversity and biological cultural heritage.	The Swedish Transport Administration	2020–2023

SUBJECT/UNIT	LEADER	PROJECT TITLE & DESCRIPTION	FUNDING	PERIOD
SLU Swedish Biodiversity Centre	Jörgen Wissman	Information project: Invasive species To create a customized information material about the worst of the invasive terrestrial plant species in Sweden. This will be a help to the target group of municipal ecologists/environmental strategists and the target group urban garden masters / landscape architects.	Swedish EPA	2020–2021
SLU Swedish Biodiversity Centre	Jörgen Wissman	Maintenance in railroad station areas A project to examine the effects of different treatments to keep vegetation low and ensure that low growing plant species and wild bees can survive in railroad station yards. (Collaboration with The Swedish Transport Administration, Naturcentrum and Ecocom)	The Swedish Transport Administration	2018–2025
SLU Swedish Biodiversity Centre	Jörgen Wissman	Capturing multifunctional dairy production: Indicators for ecosystem services and biodiversity The overall aim of this project is to investigate how relevant and reliable indicators and tools for ecosystem services and biodiversity can be applied to dairy production on different levels and used for steering towards sustainability. (Collaboration with Department of Energy and Technology, SLU)	Swedish Farmer's Foundation for Agricultural Research (SLF)	2019–2022
SLU Swedish Center for Nature Interpretation	Anders Arnell	Nature Interpretation for the Forest Sector—With a focus on the visitors The project will, in collaboration with the forest sector, explore how nature interpretation could be used to raise the public interest for cultivated forests.	The Swedish Forest Society Foundation (Stiftelsen Skogssällskapet)	2018–2021



THE GEOGRAPHICAL DISTRIBUTION OF THE ACTIVE RESEARCH PROJECTS DURING 2021

Australia	Great Britain	Nicaragua	Sri Lanka
Brazil	Hungary	Norway	Sweden
Cambodia	India	Peru	Tanzania
Chile	Kenya	Romania	Thailand
Denmark	Luxemburg	Russia	Uganda
Ethiopia	Nepal	Rwanda	Vietnam
Finland	Netherlands	Spain	

Publications 2021

Doctoral theses

LANDSCAPE ARCHITECTURE

- Ledo, P.** (2021). *A southern perspective: Northern and indigenous influences on the establishment of a hybrid culture of participatory planning, the story of Sacaba*. Diss. Acta universitatis agriculturae sueciae, 2021:44.
- Mngumi, L.** (2021). *Climate change resilience: Exploring socio-ecological system resilience for livelihood effects of climate change in peri-urban areas*. Diss. Acta universitatis agriculturae sueciae, 2021:15.
- Nuhu, S.** (2021). *Rethinking land access governance in Global South Cities: Understanding the dynamics and contentions of land access processes and governance mechanisms in peri-urban areas of Dar es Salaam, Tanzania*. Diss. Acta universitatis agriculturae sueciae, 2021:27.

Peer-reviewed research articles

AGRARIAN HISTORY

- Larsson, J. & Pääviö Sjaunja, E.-L.** (2021). Hunting by Early Modern Lule Sami Households. *Arctic*, 74 (3), pp. 323–338.

ENVIRONMENTAL COMMUNICATION

- Calderon, C. & Westin, M.** (2021). Understanding context and its influence on collaborative planning processes: A contribution to communicative planning theory. *International Planning Studies*, 26 (1), pp. 14–27.
- Barnaud, C. et al. (**Fischer, A.**) (2021). Is forest regeneration good for biodiversity? Exploring the social dimensions of an apparently ecological debate. *Environmental Science and Policy*, 120, pp. 63–72.
- Wardle, J. et al. (**Fischer, A.**) (2021). Seasonal variability of resources: The unexplored adversary of biogas use in rural Ethiopia. *Current Research in Environmental Sustainability*, 3: 100072.
- Fischer, A.** et al. (2021). Exploring the Potential of Citizen Social Science for Environmental and Sustainability Research: Experiences of and with Community-Based Researchers. *Citizen science*, 6 (1), p. 17.
- Arts, I. et al. (**Fischer, A.**) (2021). The Instagrammable outdoors—Investigating the sharing of nature experiences through visual social media. *People and Nature*, 3 (6), pp. 1244–1256.
- Arts, I. et al. (**Fischer, A.**) (2021). Information technology and the optimisation of experience—The role of mobile devices and social media in human-nature interactions. *Geoforum*, 122, pp. 55–62.
- Martin, A. et al. (**Fischer, A.**) (2021). Taming rewilding—from the ecological to the social: How rewilding discourse in Scotland has come to include people. *Land Use Policy*, 111: 105677.
- Grubbström, A. & Joosse, S.** (2021). New Entrants in Agriculture—The case of young immigrant farmers in Sweden. *European Countryside*, 13 (1), pp. 22–37.
- Joosse, S.** et al. (2021). Why are geographical indications unevenly distributed over Europe? *British Food Journal*, 123 (13), pp. 490–510.
- Joosse, S., Hensle, L., Boonstra, W. J., Ponzelar, C. & Olsson, J.** (2021). Fishing in the city for food—A paradigmatic case of sustainability in urban blue space. *npj Urban Sustainability*, 1: 41.
- Clasen, J. et al. (**Nordström Källström, H.**) (2021). Dairy cattle farmers' preferences for different breeding tools. *Animal*, 15 (12): 100409.
- Powell, S.** & Arora Jonsson, S. (2021). The conundrums of formal and informal meritocracy: Dealing with gender segregation in the academy. *Higher Education* (Early Access).
- Powell, S. & Grubbström, A.** (2021). Leading gender equality change in higher education—The case of forestry. *Journal of Agricultural Education and Extension* (Early Access).
- Pölonen, I., Allard, C. & **Raitio, K.** (2021). Finnish and Swedish law on mining in light of collaborative governance. *Nordisk Miljörättslig Tidskrift*, 2, pp. 99–134.
- Starlander, J.** (2021). Conflict and negotiation: Management of forest commons in seventeenth-century Northern Finland. *Scandinavian Economic History Review*, 69 (2), pp. 177–194.
- Peterson, M. et al. (**von Essen, E.**) (2021). Evaluating how Swedish hunters value content in hunter education classes. *Human Dimensions of Wildlife*, 26 (5), pp. 492–500.
- Westin, M.** (2021). The framing of power in communicative planning theory: Analysing the work of John Forester, Patsy Healey and Judith Innes. *Planning Theory* (Early Access).

Westin, M., Mutter, A., Calderon, C. & Hellquist, A. (2021). »Let us be led by the residents«: Swedish dialogue experts' stories about power, justification and ambivalence. *Nordic Journal of Urban Studies*, 1 (2), pp. 113–130.

LANDSCAPE ARCHITECTURE

- Butler, A.** et al. (2021). »There will be mushrooms again«: Foraging, landscape and forest fire. *Journal of Outdoor Recreation and Tourism*, 33: 100358.
- Knez, I. et al. (**Butler, A.**) (2021). »I can still see, hear and smell the fire«: Cognitive, emotional and personal consequences of a natural disaster, and the impact of evacuation. *Journal of Environmental Psychology*, 74: 101554.
- Fang, X. et al. (**Hedblom, M.**) (2021). Soundscape Perceptions and Preferences for Different Groups of Users in Urban Recreational Forest Parks. *Forests*, 12 (4): 468.
- Goddard, M. et al. (**Hedblom, M.**) (2021). A global horizon scan of the future impacts of robotics and autonomous systems on urban ecosystems. *Nature ecology & evolution*, 5 (2), pp. 219–230.
- Shaw, T. et al. (**Hedblom, M.**) (2021). Hybrid bioacoustic and ecoacoustic analyses provide new links between bird assemblages and habitat quality in a winter boreal forest. *Environmental and Sustainability Indicators*, 11: 100141.
- Xiang, Y. et al. (**Hedblom, M.**) (2021). The comparisons of on-site and off-site applications in surveys on perception of and preference for urban green spaces: Which approach is more reliable? *Urban Forestry & Urban Greening*, 58: 126961.
- Josefsson, J. et al. (**Hedblom, M.**) (2021). Compensating for lost nature values through biodiversity offsetting—Where is the evidence? *Biological Conservation*, 257: 109117.
- Ledo, P.** (2021). Peri-urbanization in Sacaba, Bolivia: Challenges to the traditional urban planning approach. *International Planning Studies*, 26 (3), pp. 286–301.
- Mngumi, L.** (2021). Socio-ecological resilience to climate change effects in peri-urban areas: Insights from the Pugu and Kazimzumbwi forest reserves of Dar es Salaam, Tanzania. *GeoJournal*, 86, pp. 339–355.
- Mngumi, L.** (2021). Exploring the contribution of social capital in building resilience for climate change effects in peri-urban areas, Dar es Salaam, Tanzania. *GeoJournal*, 86 (6), pp. 2671–2689.
- Mutter, A.** (2021). Embedding imaginaries: Electric vehicles in Sweden's fossil fuel free future. *Futures*, 129: 102742.
- Mutter, A.** et al. (2021). Competing Transport Futures: Tensions between Imaginaries of Electrification and Biogas Fuel in Sweden. *Science, Technology, and Human Values*, 47 (1), pp. 85–111.
- Evensen, K., Hemsett, G. & **Nordh, H.** (2021). Developing a place-sensitive tool for park-safety management experiences from green-space managers and female park users in Oslo. *Urban Forestry & Urban Greening*, 60: 127057.
- Evensen, K., **Nordh, H.**, Hassan, R. & Fyhri, A. (2021). Testing the Effect of Hedge Height on Perceived Safety—A Landscape Design Intervention Sustainability, 13 (9): 5063.
- Grabalov, P. & **Nordh, H.** (2021). The Future of Urban Cemeteries as Public Spaces: Insights from Oslo and Copenhagen. *Planning Theory and Practice* (Ahead of Print).
- Nordh, H.** et al. (**Wingren, C.**) (2021). Rules, Norms and Practices—A Comparative Study Exploring Disposal Practices and Facilities in Northern Europe. *OMEGA— Journal of Death and Dying* (Online first).
- Nuhu, S.** et al. (2021). Experiences of private firms in delivering land services in peri-urban areas in Tanzania. *International Planning Studies*, 26 (2), pp. 101–116.
- Pries, J. & Qviström, M.** (2021). The patchwork planning of a welfare landscape: Reappraising the role of leisure planning in the Swedish welfare state. *Planning Perspectives*, 36 (5), pp. 923–948.
- Lexén, T. & **Qviström, M.** (2021). Negotiating asymmetric borders in an emerging soft region. *European Planning Studies* (Early Access).
- Torrens, J. et al. (**Wangel, J.**) (2021). Advancing urban transitions and transformations research. *Environmental Innovation and Societal Transitions*, 41, pp. 102–105.

RURAL DEVELOPMENT

- Alarcón Ferrari, C.** et al. (**Chiwona-Karlitun, L.** & Hilding-Rydevik, T.) (2021). Citizen Science as Democratic Innovation that Renews Environmental Monitoring and Assessment for the Sustainable Development Goals in Rural Areas. *Sustainability*, 13 (5): 2762.
- Gebrehiwot, S. et al. (**Alarcón Ferrari, C.**) (2021). Monitoring and assessment of environmental resources in the changing landscape of Ethiopia: A focus on forests and water. *Environmental Monitoring and Assessment*, 193 (10): 624.
- Powell, S. & **Arora Jonsson, S.** (2021). The conundrums of formal and informal meritocracy: Dealing with gender segregation in the academy. *Higher Education* (Early Access).
- Arora-Jonsson, S.**, Pierce Colfer, C. J. & **González-Hidalgo, M.** (2021). Seeing the Quiet Politics in Unquiet Woods: A Different Vantage Point for a Future Forest Agenda. *Human Ecology*, 49 (3), pp. 297–308.
- Arora-Jonsson, S. & Larsson, O.** (2021). Lives in limbo: Migrant integration and rural governance in Sweden. *Journal of Rural Studies*, 8, pp. 19–28.

- Asztalos Morell, I.** (2021). Food sovereignty for whom? Food poverty, innovative public work projects and the authoritarian state. *Österreichische Zeitschrift für Geschichtswissenschaften*, 32 (1), pp. 141–169.
- Bogdanova, E. et al. (**Asztalos Morell, I.**) (2021). Indigenous women's reproductive health in the Arctic zone of Western Siberia: Challenges and solutions. *International Journal of Circumpolar Health*, 80 (1): 1855913.
- Johansson, C. et al. (**Asztalos Morell, I.**) (2021). Spotting good ageing: Using welfare theory of health to frame the agency of older adults with immigrant backgrounds to attain good ageing. *Nordic Social Work Research* (Early Access).
- Bartholdson, Ö., Porro, R. & Pain, A.** (2021). Seeking One's Fortune Elsewhere: The Social Breakdown of a Smallholder Settlement in the Brazilian Eastern Amazon and the Consequences for Its Rainforest Reserve. *Forum for Development Studies* (Early Access).
- Musundire, R. et al. (**Chiwona-Karlton, L.**) (2021). Soil characteristics and nutritional traits of *Macrotermes natalensis* (Isoptera: Macrotermitinae) as indicators of nutritional quality in Zimbabwe. *International Journal of Tropical Insect Science*, 41 (3), pp. 2113–2124.
- Chiwona-Karlton, L.** et al. (2021). COVID-19: From health crises to food security anxiety and policy implications. *AMBIO: A Journal of the Human Environment*, 50 (4), pp. 794–811.
- Semkunda M. A. et al. (**Chiwona-Karlton, L.**) (2021). Rural entrepreneurship and the context: Navigating contextual barriers through women's groups *International Journal of Gender and Entrepreneurship* (Early Access).
- Lindahl Rajala, E. et al. (**Chiwona-Karlton, L.**) (2021). How can agricultural research translation projects targeting smallholder production systems be strengthened by using Theory of Change? *Global Food Security*, 28: 100475.
- Subroto, S. et al. (**Cuadra, M.**) (2021). Dual Governance and the Shadow of State Authority: Co-management realities in Rema-Kalenga protected area of Bangladesh. *Journal of Sustainable Forestry* (Early Access).
- Kristensen, I. & **Dubois, A.** (2021). Social constructing of a rural bioeconomy cluster: The case of the Processum biorefinery complex in northern Sweden. *Journal of Rural Studies*, 86, pp. 87–96.
- Kalaitzoglou, K. et al. (**Dubois, A.**) (2021). Tuning stakeholder expectations in organic strawberry production—A sixteen-year case study of co-development of a strawberry knowledge network in California. *Journal of Cleaner Production*, 323: 129192.
- Pugh, R. & **Dubois, A.** (2021). Peripheries within economic geography: Four 'problems' and the road ahead of us. *Journal of Rural Studies*, 87, pp. 267–275.
- Dutta, A. & **Fischer, H.** (2021). The local governance of COVID-19: Disease prevention and social security in rural India. *World Development*, 138: 105234.
- Fischer, H.** et al. (2021). Decentralization and the governance of climate adaptation: Situating community-based planning within broader trajectories of political transformation. *World Development*, 140: 105335.
- Gupta, D. et al. (**Fischer, H.**) (2021). Dark and bright spots in the shadow of the pandemic: Rural livelihoods, social vulnerability, and local governance in India and Nepal. *World Development*, 141: 105370.
- Fischer, H.** et al. (2021). Rural institutions, social networks, and self-organized adaptation to climate change. *Environmental Research Letters*, 16: 104002.
- Saxena, A. et al. (**Fischer, H.**) (2021). Forest livelihoods and a »green recovery« from the COVID-19 pandemic: Insights and emerging research priorities from India. *Forest Policy and Economics*, 131: 102550.
- Coleman, E. et al. (**Fischer, H.**) (2021). Limited effects of tree planting on forest canopy cover and rural livelihoods in Northern India. *Nature sustainability*, 4 (11), pp. 997–1004.
- Kokko, S. & **Fischer, K.** (2021). A practice approach to understanding the multilevel dynamics of sanitation innovation. *Technology in Society*, 64: 101522.
- Fischer, K.** & Kokko, S. (2021). No legitimacy: A study of private sector sanitation development in the Global South. *Environmental Innovation and Societal Transitions*, 38, pp. 68–78.
- Chenais, E. et al. (**Fischer, K.**) (2021). Perceptions of pastoralist problems: A participatory study on animal management, disease spectrum and animal health priorities of small ruminant pastoralists in Georgia. *Preventive Veterinary Medicine*, 193: 105412.
- Fischer, K.** & Hess, S. (2021). Beyond Cost Minimisation: Farmers' Perspectives on the Adoption of GM Fodder in Sweden. *German journal of agricultural economics*, 70 (2), pp. 84–100.
- Fischer, K.** & Hess, S. (2021). The Swedish Media Debate on GMO Between 1994 and 2018: What Attention was Given to Farmers' Perspectives? *Environmental Communication* (Early Access).
- Fischer, K.** (2021). Why Africa's New Green Revolution is failing—Maize as a commodity and anti-commodity in South Africa. *Geoforum* (In Press).
- Gonda, N., Leder, S., González-Hidalgo, M., Chiwona-Karlton, L., Stiernström, A., Hajdu, F., Fischer, K., Asztalos Morell, I., Kadfak, A. & Arvidsson, A.** (2021). Critical Reflexivity in Political Ecology Research: How can the Covid-19 pandemic transform us into better researchers? *Frontiers in Human Dynamics*, 3: 652968.
- González Hidalgo, M.** (2021). The ambivalent political work of emotions in the defence of territory, life and the commons. *Environment and Planning E: Nature and Space*, 4, pp. 1291–1312.
- Eriksson, C. & **Hajdu, F.** (2021). »You have to focus all your energy on being a parent«: Barriers and opportunities for Swedish farmers to be involved fathers. *Journal of Rural Studies*, 83, pp. 88–95.
- Kadfak, A.** & Linke, S. (2021). More than just a carding system: Labour implications of the EU's illegal, unreported and unregulated (IUU) fishing policy in Thailand. *Marine Policy*, 127: 104445.
- Kadfak, A.** & Antonova, A. (2021). Sustainable Networks: Modes of governance in the EU's external fisheries policy relations under the IUU Regulation in Thailand and the SFPA with Senegal. *Marine Policy*, 132: 104656.
- Marschke, M. et al. (**Kadfak, A.**) (2021). COVID-19, instability and migrant fish workers in Asia. *Maritime Studies*, 20, pp. 87–99.

- Larsson, O. L.** (2021). Meta-governance and the segregated city: Difficulties with realizing the participatory ethos in network governance—Evidence from Malmö City, Sweden. *Policy Studies*, 42 (4), pp. 362–380.
- Sudgen, F. et al. (**Leder, S.**) (2021). Experiments in farmers' collectives in Eastern India and Nepal: Process, benefits, and challenges. *Journal of Agrarian Change*, 21 (1), pp. 90–121.
- Nguyen, T. et al. (**Leder, S.**) (2021). Recontextualising education for sustainable development in pedagogic practice in Vietnam: Linking bernsteinian and constructivist perspectives. *Environmental Education Research*, 27 (3), pp. 313–337.
- Eriksen, S. et al. (**Nightingale, A.**) (2021). Adaptation interventions and their effect on vulnerability in developing countries: Help, hindrance or irrelevance? *World Development*, 141: 105383.
- Kativu, S. & **Oskarsson, P.** (2021). »Our own law is making us beggars»: Understanding experiences of governed, mine-side communities in Mutoko district, Zimbabwe. *The Extractive industries and society*, 8 (4): 101003.
- Oskarsson, P.** et al. (2021). India's new coal geography: Coastal transformations, imported fuel and state: Business collaboration in the transition to more fossil fuel energy. *Energy Research and Social Science*, 73: 101903.
- Chanchani, D. & **Oskarsson, P.** (2021). »If the gas runs out, we are not going to sleep hungry»: Exploring household energy choices in India's critically polluted coal belt. *Energy Research and Social Science*, 80: 102181.
- Sareen, S. et al. (**Oskarsson, P.**) (2021). The pandemic as a rupture that follows rules: Comparing governance responses in India, USA, Sweden and Norway. *Frontiers in Human Dynamics*, 3: 636422.
- Goodhand, J. & **Pain, A.** (2021). Entangled lives: Drug assemblages in Afghanistan's Badakhshan. *Third World Quarterly* (Early Access).
- Pain, A., Marquardt, K.** & Dil, K. (2021). Secondary Forests and Agrarian Transitions: Insights from Nepal and Peru. *Human Ecology*, 49 (3), pp. 249–258.
- Berglund, K. & **Pettersson, K.** (2021). Innovation Beyond Borders: On Alternative Feminist Discourses of Innovation. *Feminist encounters*, 5 (2): 11158.
- Tillmar, M., Ahl, H., Berglund, K. & **Pettersson, K.** (2021). Neo-liberalism translated into preconditions for women entrepreneurs—two contrasting cases. *Journal of Enterprising Communities: People and Places in the Global Economy* (Early Access).
- Tillmar, M., Ahl, H., Berglund, K. & **Pettersson, K.** (2021). The gendered effects of entrepreneurialism in contrasting contexts. *Journal of Enterprising Communities: People and Places in the Global Economy* (Early Access).
- Ilomo, M. et al. (**Pettersson, K. & Bergman-Lodin, J.**) (2021). Doing and undoing gender in rice business and marketplaces in Tanzania. *Cogent Social Sciences*, 7 (1): 1934981.

SLU SWEDISH BIODIVERSITY CENTRE

- Jansson, T. et al. (**Fahlman, Å.**) (2021). Standing sedation with xylazine and reversal with yohimbine in juvenile asian elephants (*Elephas maximus*). *Journal of Zoo and Wildlife Medicine*, 52 (2), pp. 437–444.
- Cordeiro, J. et al. (**Fahlman, Å.**) (2021). Intranasal oxygen reverses hypoxaemia in immobilised free-ranging capybaras (*Hydrochoerus hydrochaeris*). *PLoS ONE*, 16 (11): e0260441.
- Fahlman, Å.** et al. (2021). Measurement of catestatin and vasostatin in wild boar *Sus scrofa* captured in a corral trap. *BMC Research Notes*, 14 (1): 337.
- Alarcón Ferrari, C. et al. (**Hilding-Rydevik, T.**) (2021). Citizen Science as Democratic Innovation that Renews Environmental Monitoring and Assessment for the Sustainable Development Goals in Rural Areas. *Sustainability*, 13 (5): 2762.
- Nacher, M. et al. (**Jones, M.**) (2021). Application of the Adaptive Cycle and Panarchy in La Marjaleria Social-Ecological System: Reflections for Operability. *Land*, 10 (9): 980.
- de Jong, J.** et al. (2021). Activity Pattern and Correlation between Bat and Insect Abundance at Wind Turbines in South Sweden. *Animals*, 11: 3269.
- Singleton, B.** et al. (2021). Toward productive complicity: Applying »traditional ecological knowledge« in environmental science. *The Anthropocene Review* (Early Access).
- Dahlstrom, A. et al. (**Tunón, H.**) (2021). Pathfinders for the Future? Indigenous Rights and Traditional Knowledge in Sweden. *Sustainability*, 13 (20): 11195.

Peer-reviewed editorials

LANDSCAPE ARCHITECTURE

- Vicenzotti, V.** & Waterton, E. (2021). Practicing care in a global pandemic. *Landscape Research*, 46 (1), pp. 1–7.

RURAL DEVELOPMENT

- Chenais, E. & **Fischer, K.** (2021). Power, participation and interdisciplinary tensions: Introducing a special issue on methodological developments in participatory epidemiology. *Preventive Veterinary Medicine*, 196.

Peer-reviewed review articles

RURAL DEVELOPMENT

- Kimanzu, N. et al. (**Chiwona-Karltun, L.**) (2021). What Is the Evidence Base Linking Gender with Access to Forests and Use of Forest Resources for Food Security in Low- and Middle-Income Countries? A Systematic Evidence Map. *Forests*, 12 (8): 1096.
- Musundire, R. et al. (**Chiwona-Karltun, L.**) (2021). Stewardship of Wild and Farmed Edible Insects as Food and Feed in Sub-Saharan Africa: A Perspective. *Frontiers in Veterinary Science*, 8: 601386.
- Fleischman, F. et al. (**Fischer, H.**) (2021). How politics shapes the outcomes of forest carbon finance. *Current Opinion in Environmental Sustainability*, 51, pp. 7–14.
- Nightingale, A., Gonda, N.** & Eriksen, S. H. (2021). Affective adaptation = effective transformation? Shifting the politics of climate change adaptation and transformation from the status quo. *Wires Climate Change* (Early Access).

Other peer-reviewed scientific publications

SLU SWEDISH BIODIVERSITY CENTRE

- Bengtsson, J., Angelstam, P. & **Emanuelsson, U.** (2021). Reserves, resilience and dynamic landscapes 20 years later. *AMBIO: A Journal of the Human Environment*, 50 (5), pp. 962–966.
- Robertson, L. et al. (**Jones, M.**) (2021). Resilience Assessment: International Best Practice Principles. *Special Publications Series 11*. International Association for Impact Assessment IAIA.

Peer-reviewed books

AGRARIAN HISTORY

- Tollin, C.** (2021). *Sveriges kartor och lantmätare 1628 till 1680: Från idé till tolv tusen kartor*. Stockholm: Kungl. Vitterhetsakademien och Riksarkivet, 463 pp.

SLU SWEDISH BIODIVERSITY CENTRE

- Lennartsson, T. & Westin, A.** (2021). *Skötselplanering i skogsbetesmarker: Vägledning*. Riksentikvarieämbetet, 44 pp.

Peer-reviewed books (Editors)

SLU SWEDISH BIODIVERSITY CENTRE

- Tunón, H. & Sandell, H.** (Eds.) (2021). *Biologisk mångfald, naturnyttor, ekosystemtjänster: Svenska perspektiv på livsviktiga framtidsfrågor CBM:s skriftserie 121*. Uppsala: SLU Centrum för biologisk mångfald, Sveriges lantbruksuniversitet; Naturvårdsverket.

Peer-reviewed book chapters

AGRARIAN HISTORY

- Larsson, J.** (2021). Kokonstanten: Kor och smådjur som kapital och inkomster i tidigmodern hushållsekonomi. In: Leibring, K. & Svanberg, I. (Eds.) *Nötkreatur i Sverige: Kulturhistoriska och samtida perspektiv*. Institutet för språk och folkminnen, pp. 41–58.
- Myrdal, J.** (2021). Mirakelberättelser som kulturhistorisk källa. I: *Kyrkohistorisk årsskrift 2021*. Svenska kyrkohistoriska föreningen, pp. 102–104.
- Myrdal, J. & Bäärnhielm, G.** (2021). Katalog över nordiska mirakelberättelser. I: *Kyrkohistorisk årsskrift 2021*. Svenska kyrkohistoriska föreningen, pp. 105–130.

ENVIRONMENTAL COMMUNICATION

Holand, Ø., Moen, J., Kumpula, J., **Löf, A.**, Rasmus, S. & Røed, K. (2021). Project Reign: Reindeer Husbandry in a Globalizing North—Resilience, Adaptations and Pathways for Actions. In: Nord, D. C. (Eds.) *Nordic Perspectives on the Responsible Development of the Arctic: Pathways to Action*. Springer, pp. 227–248.

LANDSCAPE ARCHITECTURE

Butler, A. & Sarlöv-Herlin, I. (2021). Landscape character assessment and participatory approaches. In: Francis, R. A., Millington, J. D. A., Perry, G. L. W. & Minor, E. S. (Eds.) *The Routledge handbook of landscape ecology*. Routledge, pp. 355–351.

Yigit Turan, B. (2021). Superkilen: Coloniality, citizenship, and border politics. In: Waterman, T., Wolff, J. & Wall, E. (Eds.) *Landscape Citizenships: Ecological, Watershed and Bioregional Citizenships*. Routledge, pp. 56–78.

RURAL DEVELOPMENT

Rutashobya, L. et al. (**Chiwona-Karltun, L.**) (2021). Gender and Rural Entrepreneurship in Digitizing Sub-Saharan Africa. In: Abugre, J. B., Osabutey, E. L. C. & Sigué, S. P. (Eds.) *Business in Africa in the Era of Digital Technology: Essays in Honour of Professor William Darley*. Springer, pp. 63–84.

Gonda, N. (2021). Re-Negotiating Rural Masculinities as Vulnerability: Cattle ranchers in climate change affected rural Nicaragua. In: Pulé, P. M. & Hultman, M. (Eds.) *Men, Masculinities, and Earth*. Palgrave Macmillan. pp. 289–307.

SLU SWEDISH BIODIVERSITY CENTRE

Hilding-Rydevik, T. (2021). De osynliga makthavarna — transformation och lärande. In: Tunón, H. & Sandell, K. (Eds.) *Biologisk mångfald, naturnyttor, ekosystemtjänster: Svenska perspektiv på livsviktiga framtidsfrågor CBM:s skriftserie 121*. Uppsala: SLU Centrum för biologisk mångfald, Sveriges lantbruksuniversitet, pp. 259–269.

Hilding-Rydevik, T. & Bengtsson, J. (2021). Att bejaka och respektera vårt ömsesidiga beroende. In: Tunón, H. & Sandell, K. (Eds.) *Biologisk mångfald, naturnyttor, ekosystemtjänster: Svenska perspektiv på livsviktiga framtidsfrågor CBM:s skriftserie 121*. Uppsala: SLU Centrum för biologisk mångfald, Sveriges lantbruksuniversitet, pp. 349–363.

Lennartsson, T. (2021). Naturbetesmarker: En resurs för biologisk mångfald och ekosystemtjänster. In: Tunón, H. & Sandell, K. (Eds.) *Biologisk mångfald, naturnyttor, ekosystemtjänster: Svenska perspektiv på livsviktiga framtidsfrågor CBM:s skriftserie 121*. Uppsala: SLU Centrum för biologisk mångfald, Sveriges lantbruksuniversitet, pp. 169–177.

Lennartsson, T. (2021). Naturbetesmarker som ekosystemresurs, exemplet Roslagshagar. In: Tunón, H. & Sandell, K. (Eds.) *Biologisk mångfald, naturnyttor, ekosystemtjänster: Svenska perspektiv på livsviktiga framtidsfrågor CBM:s skriftserie 121*. Uppsala: SLU Centrum för biologisk mångfald, Sveriges lantbruksuniversitet, pp. 178–179.

Iwarsson, M. & **Tunón, H.** (2021). Bortglömd mångfald? De odlade växterna. In: Tunón, H. & Sandell, K. (Eds.) *Biologisk mångfald, naturnyttor, ekosystemtjänster: Svenska perspektiv på livsviktiga framtidsfrågor CBM:s skriftserie 121*. Uppsala: SLU SCentrum för biologisk mångfald, Sveriges lantbruksuniversitet, pp. 154–155.

Tunón, H. (2021). Att vara inom dig — eller kanske utom dig! Historiska reflektioner om endo- och ektoparasiter. In: Berner, B., Björkman, M., Bondestam, M., Eklöf, M. & Falk, J. (Eds.) *Inom/Utom: Kropp, själ och samhälle i medicinens gränsland förr och nu*. Exempla förlag, pp. 128–135.

Tunón, H. (2021). Folkmedicin över gränserna: främmande nära, långt borta lika. In: Eklöf, M., Fors, H., Gratzner, K., Gustafsson, K. & Gustavsson, A. (Eds.) *Främmande nära: Människor och medicin över gränserna förr och nu*. Exempla förlag, pp. 24–31.

Tunón, H. (2021). Folklig kunskap, lokalt naturbruk och förhållandet till mångfalden. In: Tunón, H. & Sandell, K. (Eds.) *Biologisk mångfald, naturnyttor, ekosystemtjänster: Svenska perspektiv på livsviktiga framtidsfrågor CBM:s skriftserie 121*. Uppsala: SLU Centrum för biologisk mångfald, Sveriges lantbruksuniversitet, pp. 81–91.

Tunón, H. & Öberg Ben Ammar, L. (2021). Samisk traditionell kunskap. In: Tunón, H. & Sandell, K. (Eds.) *Biologisk mångfald, naturnyttor, ekosystemtjänster: Svenska perspektiv på livsviktiga framtidsfrågor CBM:s skriftserie 121*. Uppsala: SLU Centrum för biologisk mångfald, Sveriges lantbruksuniversitet, pp. 95–103.

Tunón, H. (2021). Medicinalväxter och andra huskurer: Reflektioner om botemedel från nybygggartrakterna runt Vilhelmina. I: Haugen, S. & Eckeryd, E. (Red.) *Vardagsliv i kåta och stuga: Bidrag från Vilhelminabiennalen 23–24 september 2019*. Umeå: Johan Nordlandersällskapet.

Books (Editors)

LANDSCAPE ARCHITECTURE

Wangel, J. & Fauré, E. (Eds.) (2021). *Beyond efficiency: A speculative design research anthology in which we seek to deconstruct ecomodern imaginaries of urban sustainability through exploring what more just and sustainable living environments could be like*. AADR, 222 pp.

Book chapters

AGRARIAN HISTORY

- Andersson, M.** (2021). Migration och religion strax före Göteborg. In: Vidén, G. (Ed.) *Årsbok 2021*. Kungl. vetenskaps- och vitterhetssamhället i Göteborg, pp. 101–114.
- Andersson, M.** (2021). How soldiers' women built early modern states: Stockholm 1544–1635. In: Dørum, K., Hallenberg, M. & Katajala, K. (Eds.) *Bringing the People Back In: state building from below in the nordic countries ca. 1500–1800*. Routledge. Chapter 10, 19 pp.
- Andersson, M.** (2021). Fattiga förfäder på 1500-talet? Hur man hittar obesuttna i landskapshandlingarna. In: Rosvall, T. (Ed.) *Släktforskarnas årsbok 2021*. Släkthistoriskt forum. pp. 141–151.

LANDSCAPE ARCHITECTURE

- Wangel, J.** & Fauré, E. (2021). Speculative design explores alternative pasts, presents and futures. In: Wangel, J. & Fauré, E. (Eds.) *Beyond efficiency: A speculative design research anthology in which we seek to deconstruct ecomodern imaginaries of urban sustainability through exploring what more just and sustainable living environments could be like*. AADR, pp. 49–55.
- Wangel, J.** (2021). Troubling speculation. In: Wangel, J. & Fauré, E. (Eds.) *Beyond efficiency: A speculative design research anthology in which we seek to deconstruct ecomodern imaginaries of urban sustainability through exploring what more just and sustainable living environments could be like*. AADR, pp. 191–198.
- Wangel, J.** & Fauré, E. (2021). Why Beyond Efficiency?. In: Wangel, J. & Fauré, E. (Eds.) *Beyond efficiency: A speculative design research anthology in which we seek to deconstruct ecomodern imaginaries of urban sustainability through exploring what more just and sustainable living environments could be like*. AADR, pp. 17–21.
- Hagbert, P. & **Wangel, J.** (2021). The built environment shapes possibilities for sustainable everyday life. In: Wangel, J. & Fauré, E. (Eds.) *Beyond efficiency: A speculative design research anthology in which we seek to deconstruct ecomodern imaginaries of urban sustainability through exploring what more just and sustainable living environments could be like*. AADR, pp. 25–32.
- Wangel, J.** & Fauré, E. (2021). The future is always in the making and the scope for action is greater than we think. In: Wangel, J. & Fauré, E. (Eds.) *Beyond efficiency: A speculative design research anthology in which we seek to deconstruct ecomodern imaginaries of urban sustainability through exploring what more just and sustainable living environments could be like*. AADR, pp. 33–40.

RURAL DEVELOPMENT

- Asztalos Morell, I.** (2021). Indigenous Gender Justice with a Focus on Sámi Reindeer Herding in Sweden. In: Hanrahan, M., Kylli, R., Asztalos Morell, I., Bogdanova, E. & Ackrén, M. (Eds.) *Indigenous Peoples and Gender Equality with Special Reference to Sámi Reindeer Herding: Juridica Lapponia 48*. University of Lapland, pp. 37–72.
- Nielsen, K. B., **Oskarsson, P.** & Becker, S. (2021). Indiens neue Kohlegeographie: Importe, private akteure und neue infrastrukturen. In: Becker, S., Klagge, B. & Naumann, M. (Eds.) *Energiegeographie: Konzepte und Herausforderungen*. Ulmer, pp. 346–356.

Peer-reviewed reports

RURAL DEVELOPMENT

- Sandström, E.** & Sahlström, E. (2021). Building Biospheres Reserves through Collaborative Governance: A study of organisational forms and collaborative processes in Sweden's biosphere reserves. *Rapport 6989*. Naturvårdsverket.

Reports

ENVIRONMENTAL COMMUNICATION

- Berg, C. et al. (**von Essen, E.**) (2021). Jakt med pil och båge. *SLU:s vetenskapliga råd för djurskydd, Sveriges lantbruksuniversitet*, 2. Uppsala: SLU:s vetenskapliga råd för djurskydd, Sveriges lantbruksuniversitet, 80 pp.

LANDSCAPE ARCHITECTURE

- Mårtensson, F., Litsmark, A., Wiström, B., Ode Sang, Å. & **Hedblom, M.** (2021). Utveckling av lekotoper för barns naturmöten. *Landskapsarkitektur, trädgård, växtproduktionsvetenskap: Rapportserie*, 2021:2. Alnarp: Faulteten för landskapsarkitektur, trädgårds- och växtproduktionsvetenskap, Sveriges lantbruksuniversitet, 24 pp.
- Ahlbäck Widenfalk, L. et al. (**Hedblom, M.**) (2021). Ekologisk kunskap för ekologisk kompensation: Syntes av forskningsprojekten Systematisera ekologisk kunskap för att effektivisera ekologisk kompensation och När kan ekologisk kompensation bidra till att bevara biologisk mångfald och ekosystemtjänster? *Rapport 6995*. Naturvårdsverket, 34 pp.
- Ahlbäck Widenfalk, L. et al. (**Hedblom, M.**) (2021). Systematisera ekologisk kunskap för att effektivisera ekologisk kompensation: Slutrapport. *Rapport 7007*. Naturvårdsverket, 60 pp.
- Öckinger, E. et al. (**Hedblom, M.**) (2021). När kan ekologisk kompensation bidra till att bevara biologisk mångfald och ekosystemtjänster? Slutrapport biologisk mångfald och ekosystemtjänster. *Rapport 6996*. Naturvårdsverket, 50 pp.

RURAL DEVELOPMENT

- Cras, P. & Wahlström, N.** (2021). Att sätta fokus på landsbygder del 1: Så gör kommuner och regioner. *Rapport 0373*. Tillväxtverket.
- Cras, P. & Wahlström, N.** (2021). Att sätta fokus på landsbygder del 2: Lärdomar från kommuner och regioner. *Rapport 0377*. Tillväxtverket.
- Albihn, A., Seligsohn, D., Rydhmer, L., Gunnarsson, S., Hansson, P., Johnsson, P., **Kuns, B.** (2021). Klimatanpassning av svensk animalieproduktion – säkrare tillgång på livsmedel under en kris. *SLU Future Food Reports 15*. Uppsala: SLU Future Food, 52 pp.
- Kuns, B.** (2021). A review of recent social science literature on Swedish farming: A research agenda for understanding current and future challenges. *Urban and Rural reports*, 2021:1. Uppsala: Sveriges lantbruksuniversitet, 78 pp.

SLU SWEDISH BIODIVERSITY CENTRE

- de Jong, J.** (2021). Miljöövervakning av fladdermöss i Sverige: Utvärdering av fladdermusdata 1999–2019. *Meddelande 2021:09*. Länsstyrelsen, Jönköpings län, 28 pp.
- Hilding-Rydevik, T.** et al. (2021). *Strategisk miljöbedömning av Sveriges strategiska plan för den gemensamma jordbrukspolitiken (GJP) 2023–2027: slutlig miljökonsekvensbeskrivning*. Professional Management.
- Ebenhard, T.** et al. (**Tunón, H.**) (2021). Utarmning och restaurering av landekosystem: Ett svenskt perspektiv på IPBES-rapporten Land degradation and restoration. *Rapport*, 6948. Naturvårdsverket, 111 pp.

Letters

RURAL DEVELOPMENT

- Oskarsson, P. & Chhotray, V.** (2021). Preparing for a Just Transition Away from Coal: Proposal for a Closed Coalfield Land Rights and Restitution Act. *Economic and Political Weekly*, 56 (32).

Conference abstracts

LANDSCAPE ARCHITECTURE

- Yigit Turan, B.** et al. (2021). What does 'de/anti-colonial thought' bring to planning and design research? *Book of abstracts: STOP AND THINK*, ECLAS conference 13–15/09/2021 SLU / Uppsala / Sweden Online, p. 77.

Conference proceedings (editors)

LANDSCAPE ARCHITECTURE

- Yigit Turan, B. & Westerdahl, S.** (Eds.) (2021). *Book of abstracts STOP AND THINK*, ECLAS conference 13–15/09/2021 SLU / Uppsala / Sweden Online, Uppsala: Department of Urban and Rural Development, Swedish University of Agricultural Sciences.

Other popular science publications

AGRARHISTORIA

Tollin, C. (2021). Lantmätaren Johan Söderling och den geometriska jordeboken M2. *En brokigt blandad bukett: Arkeologisk och bebyggelseantikvarisk blogg Utskrift 18 Kulturmiljö Halland.*

LANDSCAPE ARCHITECTURE

Hedblom, M. (2021). Utopi eller dystopi? Framtidsperspektiv på biologisk mångfald. *Biodiverse*, 26 (4), pp. 18–19.

van Der Wal, R. & **Hedblom, M.** (2021). En grön spegel av vår tid: Betraktelse över gräsmattan som fenomen och habitat. *Biodiverse*, 26 (4), pp. 26–27.

Hedblom, M. & Gunnarsson, B. (2021). Biodiversitet på recept? Mångfalden av arter kan påverka hur vi mår. *Biodiverse*, 26 (4), pp. 20–21.

SLU SWEDISH BIODIVERSITY CENTRE

Borg, A. (2021). Roten till det goda. När stadens träd får fint om fötterna. *Biodiverse*, 26 (3), pp. 12–13.

Borg, A. (2021). Ny föreståndare för CBM. *Biodiverse*, 26 (1), pp. 21–21.

Borg, A. (2021). Han värnar om alla korn. *Biodiverse*, 26 (1), pp. 19–20.

Borg, A. (2021). Övervakning nyckeln till bättre förvaltning av genetisk variation. *Biodiverse*, 26 (1), pp. 16–17.

Borg, A. (2021). Besök på en skogsfastighet: "Det finns inga nackdelar för oss skogsägare att börja diskutera landskapsplanering". *Biodiverse*, 26 (2), p. 5.

Borg, A. (2021). Gener ger viktiga pusselbitar. *Biodiverse*, 26 (1), pp. 12–13.

de Jong, J. & Sundberg, L. (2021). Fladdermössen visar den gröna vägen: Indikerar om den gröna infrastrukturen fungerar. *Biodiverse*, 26 (4), pp. 10–11.

de Jong, J. & Nedinge, M. (2021). Fascinerande fladdermöss: Hur blev de plötsligt så populära? *Fauna och flora*, 116 (4), pp. 2–5.

de Jong, J. & Arnbom, T. (2021). Gåta vart fladdermössen tar vägen på vintern. *Fauna och flora*, 116 (2), pp. 30–37.

de Jong, J. (2021). Landskapsplanering, äganderätten och rätten att bruka sin mark. *Biodiverse*, 26 (2), pp. 6–7.

Tunón, H. & Sandell, K. (2021). Biologisk mångfald och ekosystemtjänster: En antologi blir till. *Biodiverse*, 26 (3), pp. 5–6.

Tunón, H. (2021). Nu har vi spännande tider framför oss! *Svensk fäbodkultur och utmarksbruk*, 2, pp. 4–5.

Tunón, H. (2021). Fäbodkulturens väg mot Paris. *Svensk fäbodkultur och utmarksbruk*, 4, pp. 4–4.

Tunón, H. (2021). Seterkultur i Røros: nordiskt samarbete. *Svensk fäbodkultur och utmarksbruk*, 4, pp. 5–5.

Tunón, H. (2021). Medicin växer på träd. *Ekbladet*, 36, pp. 9–15.

Master's theses 2021

ENVIRONMENTAL SCIENCE

Abeltina, Annija Mara. *Dainas, nature, and interpretation: Portraying nature-human relationships in Latvian folklore.*

Andersson, Anna. *Perspectives on Sámi participation shaping a duty to consult: Investigating problem representations and the opportunities to influence policy-making.*

Baig, Mirza Muhammad Fahad. *Adding meaning to medicine: Taking subjective perspectives of medical doctors on medicine.*

Belly-le Guilloux, Léna. *Understanding new expectations for democratic environmental governance: A policy analysis of an activist movement in the South-East of France.*

Bernro, Mikaela. *Defining sustainability in Swedish forest policy: A WPR-analysis of problem representations in the Forest Inquiry.*

Boesten, Ida. *Neutrality – a cornerstone of facilitation practice? Analysing the use of neutrality within facilitation of sustainability dialogue through identity construction.*

Budiwarman, Caroline. *Instagram and sustainability: How Instagram users make sense of their engagement within the sustainability context on the platform.*

Farschchi, Alina. *Freeman goes green: Stakeholder participation and applied Stakeholder Theory in corporate sustainability strategies.*

Fritz, Diana. *Living against the grain of society: The practice of voluntary simplicity.*

Gunnars, Therese. *Discursive limitations and opportunities in environmental media communication: A critical discourse analysis of the Preemraff Lysekil debate.*

Gustavsson, Sara. *Filmmakers' interpretation of environmental science fiction: An exploration of how movies can be used for change making.*

Hija Uhlås, Asya. *Communicating waste sorting with newly-arrived immigrants.*

Klaus, Anita. *To fill the gap: Drivers and barriers to mitigate the discrepancy between intentions and actual food waste behaviour in private households of environmentally-conscious consumers.*

Kreber, Daniela. *A revised narrative of the Baltic Sea in Sweden: A phenomenological reflection on the multifaceted human-sea interrelations and communication.*

Kumambetova, Nina. *Understanding of eco-shaming phenomena in Kazakhstan.*

Lehtmets, Johanna. *Participatory environmental governance in Estonia: Public participation professionals' understandings and practices of participatory process design.*

Manolakos, Daphne Anna. *Enhancing menstrual hygiene management (MHM) in refugee camps in Greece: An intersectional perspective on "leaving no one behind" in water, sanitation and hygiene (WASH) programmes.*

Pietsch, Klara. *Ambiguous environmental advertising: How brand advertising and consumers frame Rügenwalder Mühle's products.*

Prochno, Sina. *A communicative constructionist perspective on corporate social responsibility: Using software for understanding and attributing meaning to CSR.*

Rostang, Olivier. *GIS modeling of green roof ecosystem services to optimize green infrastructure placement and to map multifunctionality: A case study in Sydöstra staden, Uppsala, Sweden.*

Suslina, Anastasiia. *Sealing the fate of arctic marine mammals: Challenges and opportunities of non-legislative international organisations.*

Varekamp, Linda. *Symbolic coping in Canada's coal phaseout: Applying social representations dynamics to communities in transition.*

Westman, Julia. *Increasing fuel taxes as an identity threat: A case study of the social movement Bensinupproret 2.0.*

Wickström, Joel. *Navigating the delivery of a service: A practice perspective on environmental consultants.*

LANDSCAPE ARCHITECTURE

Algeborg, Molly. *En urban vattendelare: Ett gestaltungsförslag för Rosendals torg.*

Andersson, Emelie. *Urbana kolsänkor: Utformning av kolinlagrande vegetationsytor i staden.*

Axelsson, Lina & Enekvist, Klara. *Havet, träden och människan: Gestaltungsstrategier och principer för klimatanpassning av Societetsparken i Norrtälje.*

Bergman, Märta. *Städernas vilda mellanrum — och deras betydelse för barns fria lek.*

Blomfeldt, Jonna. *Tillfällig oas: Temporär landskapsarkitektur på platser i väntan på exploatering.*

Borén, Erik & Gillsjö, Olle. *Dagvattenhantering som katalysator för urbana ekosystemtjänster: Ett gestaltungsförslag för Timboholmsparken i Skövde.*

Burén, Maria. *Att uppleva regn genom landskapsarkitektur: Två gestaltungsförslag i Karlfeldtsparken, Stockholm.*

Enmarc, Lucas. *Utformning för främjandet av fysisk aktivitet och aktiva transportmedel: Utformningsprinciper för Rosendals huvudstråk.*

Guðmundsdóttir, Anna Kristín. *Attractive rural living: A future vision for Hjalteyri village in North Iceland.*

Hadgu, Semhal Mehari. *Integration of allotment garden in public green space for the social wellbeing of urban residents: A study of Ekebydalen allotment garden, Uppsala, Sweden.*

Hane, Sofia. *Vägskaål: Ett gestaltungsförslag för Resta gårds parkområde med fokus på miljöpsykologi.*

Holmsved, Stina & Lundgren Bladh, Isabelle. *POP-OUT: En gestaltning av ett utomhuskontor för gröna offentliga rum i staden.*

Hult Broman, Ellinor & Yousef, Teresa. *Att skapa upplevelsevärden med dagvatten som resurs: Ett gestaltungsförslag för Nytorps gårde.*

Isaksson, Josefina. *Skogens prioritet i kommunal planering och förvaltning: Skogsvård och skogsskydd i Vallentuna kommun.*

Islam, Sumiya. *Design and uses of green areas in urban environments on the basis of evaluations of people's experience: A study of Hammarby sjöstad, Stockholm, Sweden.*

Johansson, Lisa. *Gestaltning för friluftsliv året runt: Ett gestaltungsförslag på Holmön för att stärka friluftslivet på vintern.*

Johansson, Tove. *Bron till delaktighet: Tillgängliga gröna utomhusmiljöer för personer med autismspektrumtillstånd (AST).*

Jonsson, Frida. *Mellan lekmiljö & vuxenvärld: Hur Uppsala kommuns riktlinjer kan stödja tonåringars användning av utemiljöer.*

Jädnäs, Jennika & Tjernberg, Erika. *Blågröngrå system i kallt klimat.*

Karlborg, Emil. *Förtätning och landskap för välbefinnande – en konflikt i kommunal planering: En analys av Linköpings kommun.*

Karlström, Marta. *Skyfallsanpassning av bostadsnära miljö: Ett gestaltungsarbete av området kring Stjärnhusen i Malmö.*

Karlzén, Niklas. *Promenadvänliga miljöer för ett aktivt stadsliv: En undersökning av möjligheterna för bebyggelsens placering och övergripande utformning inom Cirkus Lorensberg i centrala Göteborg.*

Kettner, Vojtech. *Thematic landscape master plan: Climate-resilient, permeable, and culturally informed landscape master plan for Hostivice municipality, Czechia.*

Kyrö, Agnes. *Torget som en demokratisk plats: Ett gestaltungsförslag för Rosendals torg.*

Lindeberg, Rut. *Skolgårdsgestaltningen påverkar användningen: Gröna kvaliteter stärker ungdomars rätt till lek och vila.*

Mayr, Lisa & Wejlemark, Sunniva. *Loop: Ett gestaltungsförslag för en del av Östra kyrkogården i Malmö.*

Mellström, Caroline & Roth, Lovisa. *Aktiverande landskapsarkitektur: Ett gestaltungsförslag för ökad fysisk aktivitet.*

Mojtabaei, Sharareh. *Conceptual design models for social values of urban forests [in Sundsvall].*

Olsson, Julia. *Nilsemyrens våtmark i Strömstad: Ett gestaltungsförslag med fokus på estetiska och sociala värden.*

Olterman Arvidsson, Olof. *Förstärkt naturupplevelse: Designelementets förmåga att förstärka upplevelsen av naturmiljöer.*

Ratin, Md. *A place-making proposal for Karlholm strand based on a planning ethic, community development ideals and landscape aesthetics.*

Rostami, Marjan. *Designing urban landscapes in a new neighbourhood, focusing on aesthetical, social, and ecological values: A study of the south-eastern neighbourhood, Uppsala, Sweden.*

Soer, Annebel. *The impact of the COVID-19 pandemic on the use of urban green spaces by international youth in Bonn.*

Stenfeldt, Klara Signe. *Ekologisk kompensation — Att balansera stad och natur: Ett gestaltungsforslag.*

Stålnacke, Elias. *Perennparken på Österplan: Naturlika perennplanteringar i Uppsala.*

Svensson, Nils. *Gestaltning av Batteriparken: Förslag för social hållbarhet.*

Taylor, Sofie. *Lyftet: Från flygplats till stadsdelspark.*

Östblom, Josef. *Transformation av Lövholmens industrilandskap.*

RURAL DEVELOPMENT

Botvidsson, Viktor. *Between the lines: A policy analysis of the European Green Deal and its portrayal of rural areas.*

Eriksson, Viktor. *Cooperatives at a crossroads: Trajectories of agricultural cooperatives in Ukraine.*

Gallisai, Francesca. *A pandemic revealing another: Colombian indigenous women in the national COVID-19 discourse.*

Goldhahn, Hedvig. *Family farm and financial asset: External land ownership and family agriculture on the Swedish Plains.*

Hjelm, Anna. *One land, two rights: A study on the conflict between forestry and reindeer herding from an environmental justice perspective.*

Hussen, Mahamoud Hussein. *Walking the tight rope of local conservation practices: The challenge of both preserving wildlife and increasing human well-being simultaneously.*

Hågård Brown, Maximilian. *Values of quality in 'natural' wine production: The study of 'natural' wine in Germany.*

Islam, Md Ariful. *Investigating Monga: Seasonal food insecurity and adaptation strategies in the northern region of Bangladesh.*

Jankus, Tomas. *Immigrant entrepreneurship: The case of Lithuanian immigrant entrepreneurs in rural East of England.*

Karlsson, Lisa. *Fire shed light: A narrative analysis of how media framed the 2018 wildfires in Sweden.*

Kativu, Saymore Ngonidzashe. *'Our own law is making us beggars': Understanding the marginal experiences of governed, mine-side communities in Mutoko district, Zimbabwe.*

Larsson, Claes. *Ömsom möjlighet, ömsom hinder: En kvalitativ studie av de utmaningar skånska jordbrukare möter i sin vardag för ett lönsamt företagande.*

Mukakalisa, Christella. *The role of gender equality on rural women development in agriculture: Case study — koperative duhinge ikigori kanjongo "KODIKA", Nyamasheke district, Rwanda.*

Möller, Anton. *The power in Cooperation: A study of Cards, Vietnam and the EU.*

Olsson, Emelie. *Understanding Swedish prepping: A mixed-method study on resilience, trust, and incentives to prepare for crises.*

Podieh, Kenza. *"It's like having three children when it comes to cooking with my husband".*

Ringström, Olle. *The seasons are changing: A discourse analysis of the challenges facing actors working with climate change adaptation in Västernorrland.*

Rogge, Finn. *Digging for Common Ground: Exploring how Practitioners of Alternative Farming Methods are replicating Principles of Traditional Ecological Knowledge.*

Rådberg, Gabriella. *Research & innovation in the EU bioeconomy strategy: A useful solution or a political buzzword?*

Stopek, Olivia Margareta. *"Nature Gives and Nature Takes": A case study on the experience of farming with a changing water resource.*

Conferences organised at the department 2021

- 28 JAN **Älgen i rummet — konsten att kommunicera allemansrätten**
(The Moose in the room—How to communicate the right of public access)
Digital conference, organised by SLU Swedish Centre for Nature Interpretation (CNV), for nature interpreters and others working with outdoor life. Over 500 participants.
- 07 JUN **A vision for Sami food in the northernmost regions**
A workshop organised within the framework of the research project *Reindeer herding: An indigenous food system in transition* at Division of Rural Development.
- 13–15 SEP **ECLAS 2021 – STOP AND THINK**
The annual international ECLAS conference aimed at researchers and professionals within landscape architecture. This year arranged and hosted by Division of Landscape Architecture.
- 10 NOV **Vitamin N — hur natur och naturvägledning kan bidra till folkhälsa**
(Vitamin N—How nature and nature interpretation can contribute to public health)
Digital conference with its starting point in current research on contact with nature and public health. A contribution to the national initiative *Friluftslivets år*. Collaboration with SLU Future One Health.
- 11 NOV **Att sprida ringar på vattnet 2021**
(Spreading rings on the water)
Annual conference on marine and freshwater pedagogics, organised by SLU Swedish Centre for Nature Interpretation.
- 11–12 NOV **Ruralities and Regions in Transition – A conference for Rural and Regional Researchers in Sweden.**
The Division of Rural Development (SLU) and Nordregio gather scholars from all over the country to meet, share and discuss important issues related to rural and regional development in Sweden.
- 25 NOV **BIODIVERSITY CONFERENCE 2021 – Vital perspectives on biodiversity**
The annual Biodiversity Conference, arranged by SLU Swedish Biodiversity Centre.
- 16–17 NOV **Environmental Communication Days 2021: Communicating for sustainability**
Annual conference organised by the research programme SLU Mistra Environmental Communication, for everybody working with environmental communication.
- 1–2 DEC **Voicing indigenous food sovereignty in the global North: Concerns and struggles in Sweden, Finland, Russia and Canada**
A two days workshop organised within the framework of the research project *Reindeer herding: An indigenous food system in transition* at Division of Rural Development.

The department in the media 2021

- 08 JAN **Bistandsaktuellt**, Norfund tapte 146 millioner kroner på plantasje i Tanzania
Linda Engström (Environmental Integration)
- 08 JAN **Skogen Den obundna skogstidningen**, Våga rikta ljuset mot dig själv
Ann Grubbström & Stina Powell (Environmental Communication)
- 11 JAN **Dala-Demokraten**¹, Det är hög tid att rädda regnskogen — WWF och kändisar i debattupprop för regnskogen
Asa Fahlman (SLU Swedish Biodiversity Centre)
- 13 JAN **Skogsaktuellt**, Ny forskning om skogsbränders sociala aspekter
Marien Gonzalez Hidalgo (Rural Development)
- 22 JAN **SR Vetenskapsradion**, Rapporten som visar hur svensk natur utarmas
Torbjörn Ebenhard (SLU Swedish Biodiversity Centre)
- 26 JAN **SR Nyheter P4 Uppland**, Skogen påverkar vår hälsa
Marcus Hedblom (Landscape Architecture)
- 27 JAN **Upsala Nya Tidning**, Så kan torget bli en plats att vilja vara på
Thorbjörn Andersson (Landscape Architecture)

- 27 JAN **Skogen**, Metoden som når fram
Anders Arnell (SLU Swedish Centre for Nature Interpretation)
- 02 FEB **Blekinge Läns Tidning**², Konflikten om vargen större än någonsin
Erica von Essen (Environmental Communication)
- 04 FEB **Dagens Nyheter**, Klimatet — frågan som splittrar den svenska skogsforskningen
Erik Westholm (Rural Development)
- 04 FEB³ **Dagens Nyheter**, Skogsforskningschef avlönad av Europas största skogsbolag
Erik Westholm (Rural Development)
- 05 FEB⁴ **Dagens Nyheter**, Forskare: Skogsindustrin styrde vår forskning
Erik Westholm (Rural Development)
- 09 FEB **Blekinge Läns Tidning**, Nu är sumphålet framtida fågeloas
Urban Emanuelsson (SLU Swedish Biodiversity Centre)
- 10 FEB **Söderhamns-Kuriren**⁵, Här är de som ska ge Folkteatern goda råd
Erik Westholm (Rural Development)
- 11 FEB **Skogsaktuellt**, Kunskapen om skogen — vart är vi på väg?
Erik Westholm (Rural Development)
- 11 FEB **Skogen Den obundna skogstidningen**, Så berättar du om din skog
Anders Arnell (SLU Swedish Centre for Nature Interpretation)
- 12 FEB **Tidningen Syre**, Världens arter illa ute när COP15 skjuts upp — igen
Torbjörn Ebenhard (SLU Swedish Biodiversity Centre)
- 12 FEB **Skogsaktuellt**, Slutreplik: Skogen behöver tvärvetenskap
Erik Westholm (Rural Development)
- 12 FEB **Skogsverige**, Tomas Lundmark bemöts av Erik Westholm: "Tvivlet ökar om att skogsbruket är på rätt väg"
Erik Westholm (Rural Development)
- 21 FEB **TT**⁶, Konflikten om vargen större än någonsin
Erica von Essen (Environmental Communication)
- 06 MAR **fPlus**⁷, Kärnavfallsrådet: Felaktiga uppgifter — inget beslut än
Tuija Hilding-Rydevik (SLU Swedish Biodiversity Centre)
- 17 MAR **SR p4 Blekinge**, Klart med jättevåtmark i Nättraby
Urban Emanuelsson (SLU Swedish Biodiversity Centre)
- 20 MAR **Falukuriren**, Svenskt skogsbruk under press
Erik Westholm (Rural Development)
- 21 MAR **Göteborgsposten**⁸, Så kan rovdjuren skydda oss från nästa pandemi
Torbjörn Ebenhard (SLU Swedish Biodiversity Centre)
- 26 MAR **Sydsvenskan**, Vellinge kommun bör göra barnkonsekvensanalyser
Marcus Hedblom (Landscape Architecture)
- 08 APR **Dala-Demokraten**, Skogsnäringens självgodhet förhindrar konstruktiv dialog
Erik Westholm (Rural Development)
- 08 APR **TV4**, Den gröna vågen 2.0 — så kallas den trend som pågår just nu som handlar om att lämna storstäderna för att flytta ut på landet
Emil Sandström (Rural Development)
- 16 APR **TV4 Efter fem**, Underbara bilder: Så återhämtade sig naturen under pandemin
Torbjörn Ebenhard (SLU Swedish Biodiversity Centre)
- 24 APR **Norra Skåne**, Fårull sätter stopp för rådjuren
Emil Sandström (Rural Development)
- 28 APR **Universitetslära**, Genomtänkta enkäter ger pålitligare data
Klara Fischer (Rural Development)
- 05 MAY **Falköpings Tidning**, Lärande ute får stöd av forskare
Petter Åkerblom (Landscape Architecture)

- 12 MAY **WWF**, Biologisk mångfald — vägen framåt
Torbjörn Ebenhard (SLU Swedish Biodiversity Centre)
- 15 MAY **Sydsvenskan**, Forskare om miljonprogrammen: "Förstör inte något som fungerar"
Johan Pries (Landscape Architecture)
- 18 MAJ **TV4 Nyheterna**, Krisen för den biologiska mångfalden
Torbjörn Ebenhard (SLU Swedish Biodiversity Centre)
- 19 MAY **Aftonbladet**⁹, Växande naturskydd — med stora luckor
Torbjörn Ebenhard (SLU Swedish Biodiversity Centre)
- 20 MAY **ETC**, Därför behöver vi klimat-emojis
Josefin Wangel (Landscape Architecture)
- 21 MAY **ETC**, Håll tummarna för solparks-emojin
Josefin Wangel (Landscape Architecture)
- 27 MAY **SR P1-morgon**, Jordbrukspolitiken i EU
Jörgen Wissman (SLU Swedish Biodiversity Centre)
- 06 JUN **Dala-Demokraten**, Dags för en ny vision om den svenska skogen!
Erik Westholm (Rural Development)
- 08 JUN **Altinget**, Forskare: Oförmåga att skydda samiska rättigheter hindrar klimatomställningen
Kaisa Raitio (Environmental Communication)
- 08 JUN **Dala-Demokraten**, Skogsbruk är ingen privatsak
Erik Westholm (Rural Development)
- 08 JUN **Dala-Demokraten**, Vad menar Westholm? Ska skogarna förstatligas?
Erik Westholm (Rural Development)
- 09 JUN **Oskarshamns-Tidningen**¹⁰, Skola, butik och kommunikationer viktigast på småorter
Nora Wahlström (Rural Development)
- 09 JUN **SR Uppland**, Picknick-pepp med ovanlig mat: granskott på chokladkaka
Per Bengtsson (SLU Swedish Centre for Nature Interpretation)
- 10 JUN **Sveriges Radio P4 Värmland**, Den invasiva arten Blomsterlupin
Jörgen Wissman (SLU Swedish Biodiversity Centre)
- 11 JUN **Land Lantbruk**, Följ med på en digital fältdag med LRF Skåne
Martin Andersson (Agrarian History)
- 15 JUN **Livsmedel i fokus**, Hallå där!
Karin Gerhardt (SLU Swedish Biodiversity Centre)
- 15 JUN **Sveriges Radio P4 Malmöhus**, Den invasiva arten Blomsterlupin
Jörgen Wissman (SLU Swedish Biodiversity Centre)
- 18 JUN **Värmlandsbygden**, Sveriges unika och storslagna kartarbete
Clas Tollin (Agrarian History)
- 18 JUN **ETC**, På tvärs med kapitalet
Josefin Wangel (Landscape Architecture)
- 21 JUN **Arkitekten**, Ökad utbyggnadstakt av solceller skapar nya utmaningar för gestaltning
Josefin Wangel (Landscape Architecture)
- 22 JUN **ETC**, Klimatmotstånd som går under radarn
Josefin Wangel (Landscape Architecture)
- 23 JUN **Falukuriren**, På flykt från mänsklig värdighet
Erik Westholm (Rural Development)
- 23 JUN **Arkitekten**, Nya byggstenar i gestaltningen
Josefin Wangel (Landscape Architecture)
- 24 JUN **Land Lantbruk**, "Fattiga länder går inte längre med på att andra förbrukar deras resurser" FN-möte ska besluta om global plan för biologisk mångfald
Torbjörn Ebenhard (SLU Swedish Biodiversity Centre)

- 27 JUN **Svensk Historia**, Sveriges kartor och lantmätare 1628–1680
Clas Tollin (Agrarian History)
- 30 JUN **Svenska Dagbladet**, Jag tycker att lupinen ska bort från butik. Det är den mest invasiva art vi har
Jörgen Wissman (SLU Swedish Biodiversity Centre)
- 06 JUL **SVT Nyheter Helsingborg**
Marcus Hedblom (Landscape Architecture)
- 08 JUL **SVT Nyheter**, En ny skogspolitik på väg
Torbjörn Ebenhard (SLU Swedish Biodiversity Centre)
- 30 JUL **ETC**, Hur apokalyppreppar man en sexåring?
Josefin Wangel (Landscape Architecture)
- 03 AUG **TV4 Nyheterna**, Jättebränderna — en dödsfälla för djuren: Dör direkt i lågorna
Åsa Fahlgren (SLU Swedish Biodiversity Centre)
- 07 AUG **Svenska Dagbladet**, "Jordbruksverket ger skev bild av genteknik"
Klara Fischer (Rural Development)
- 11 AUG **Flamman**, Därför är Sverige ett land av kalhyggen
Erik Westholm (Rural Development)
- 17 AUG **Svenska Dagbladet**, "Jordbruksverket begränsar debatten"
Klara Fischer (Rural Development)
- 16 AUG **Upsala Nya Tidning**, Linnés rågåkrar ska långsamt återskapas
Clas Tollin (Agrarian History)
- 18 AUG **Tidningen Syre**, Uppgifter: Inget "Parisavtal" för att rädda den biologiska mångfalden i år
Torbjörn Ebenhard (SLU Swedish Biodiversity Centre)
- 26 AUG **TT**, Nattbelysning stör larver — hotar ekosystem
Jan Olof Helldin (SLU Swedish Biodiversity Centre)
- 29 AUG **Dagens Nyheter**, DN Debatt. "Biståndet har gått i otakt med det afghanska samhället"
Adam Pain (Rural Development)
- 31 AUG **ATL Lantbrukets Affärstidning**, Forskare tar in skogen i staden
Marcus Hedblom (Landscape Architecture)
- 03 SEP **ETC**, Då klappar mitt hjärta extra snabbt
Josefin Wangel (Landscape Architecture)
- 03 SEP **Östgötatidningen**, Macken i Målexander ett minne blott — landsbygden kämpar vidare med allt mindre service
Patrik Cras (Rural Development)
- 09 SEP **SR Vetenskapsradion** — Borta för alltid, Pungvargen — hatad till döds
Torbjörn Ebenhard (SLU Swedish Biodiversity Centre)
- 09 SEP **SR Vetenskapsradion** — Borta för alltid, Vandringsduvan — världens vanligaste fågel som utrotades
Torbjörn Ebenhard (SLU Swedish Biodiversity Centre)
- 09 SEP **SR Vetenskapsradion** — Borta för alltid, Garfågeln — kokad levande i upplysningens namn
Torbjörn Ebenhard (SLU Swedish Biodiversity Centre)
- 09 SEP **Östgötatidningen**, Är Väderstad Östergötlands Gnosjö — och finns det då baksidor med det?
Seema Arora-Jonsson (Rural Development)
- 12 SEP **Newsvoice**, Om människan minskar orörd natur skapas nya livsmiljöer för biologisk mångfald
Urban Emanuelsson (SLU Swedish Biodiversity Centre)
- 15 SEP **Aktuell Hållbarhet**¹², Nu kommer mål och ramverk för biologisk mångfald
Torbjörn Ebenhard (SLU Swedish Biodiversity Centre)
- 16 SEP **SR P1**, Ny rapport varnar för matbrist i klimatförändringarnas spår
Karin Gerhardt (SLU Swedish Biodiversity Centre)
- 23 SEP **Dagens Samhälle**, Arbetsmiljö. Skogsrum på kontoret ska minska stressen
Marcus Hedblom (Landscape Architecture)

- 24 SEP **Aktuell Hållbarhet**, Vi måste ha kakan kvar
Torbjörn Ebenhard (SLU Swedish Biodiversity Centre)
- 27 SEP **Upsala Nya Tidning**, Greta Thunberg pekar på det omoraliska
Erik Westholm (Rural Development)
- 29 SEP **Svalbardsposten**, Svalbard's rich environmental memories / Svalbards rike miljøminner
Annette Löf, Lars Hallgren (Environmental Communication)
- 02 OCT **Tidningen Syre**, Varningen: Så kan ekologisk utarmning bli "det nya normala"
Torbjörn Ebenhard (SLU Centrum för biologisk mångfald)
- 02 OCT **Östgöta Correspondenten**, Mer än ost att hämta i Boxholm
Erik Westholm (Rural Development)
- 03 OCT **Extrakt**, Trixigt när kommuner vill handla närproducerat
Helena Nordström Källström (Environmental Communication)
- 06 OCT **Västerbottens Mellanbygd**¹³, Fler vill flytta till landsbygden
Thomas Norrby (Rural Development)
- 08 OCT **ETC**, Jag blir fly förbannad
Josefin Wangel (Landscape Architecture)
- 08 OCT **Landskrona Posten**¹⁴, "Ingår arten människa i det sjätte massutdöendet?"
Torbjörn Ebenhard, Tuija Hilding-Rydevik, Håkan Tunón (SLU Swedish Biodiversity Centre)
- 11 OCT **Dagens Industri**, Nytt ramverk på gång: Kommer naturen få ett eget Parisavtal?
Torbjörn Ebenhard (SLU Swedish Biodiversity Centre)
- 11 OCT **Tidningen Syre**, COP15: EU vill minska fotavtrycket från konsumtion och produktion
Torbjörn Ebenhard (SLU Swedish Biodiversity Centre)
- 11 OCT **Dagens Nyheter**, Tjänstemän larmar: Hotade skogar huggs ned
Erik Westholm (Rural Development)
- 15 OCT¹⁵ **ETC**, Är det verkligen en klimatallians vi vill ha, till varje tänkbart pris?
Josefin Wangel (Landscape Architecture)
- 20 OCT **Arkitekten**, Redo för regn
Carola Wingren (Landscape Architecture)
- 26 OCT **SVT1, Morgonstudion**, Om utflyttningen från storstäderna
Kjell Hansen (Rural Development)
- 27 OCT **Hallands Nyheter**, Hit vill folk flytta, men var ska de bo?
Emil Sandström (Rural Development)
- 31 OCT **SR, God morgon världen**, Utflyttningen från storstäderna
Kjell Hansen (Rural Development)
- 01 NOV **Din gård**, Begreppet bonde — det finaste vi har
Patrick Svensson (Agrarian History)
- 02 NOV **Falu Kuriren**¹⁶, Nu kan vi inte lulla runt längre
Erik Westholm (Rural Development)
- 02 NOV **Dagens Nyheter**, Avtal om skogsskydd ifrågasätts av forskare
Torbjörn Ebenhard (SLU Swedish Biodiversity Centre)
- 02 NOV **Falukuriren**, Klimatkrisen och frihetsidealet
Erik Westholm (Rural Development)
- 03 NOV **Dagens Nyheter**, "Skogsmaskinerna kommer inte att stanna i morgon"
Torbjörn Ebenhard (SLU Swedish Biodiversity Centre)
- 03 NOV **Aktuell Hållbarhet**, Kunming-deklaration undertecknad
Torbjörn Ebenhard (SLU Swedish Biodiversity Centre)
- 03 NOV **Miljömagasinet**, Moralen får vänta trots klimatkris
Erik Westholm (Rural Development)

- 08 NOV **Dagens nyheter**, Klarsynta tankar och perspektiv om klimatkrisen
Erik Westholm (Rural Development)
- 10 NOV **Hem & Hyra**, "De rör sig i sängar och soffor" — så blir du av med långsprötad silverfisk i lägenheten
Scarlett Szpryngiel (SLU Swedish Biodiversity Centre)
- 11 NOV **ATL Lantbrukets Affärstidning**, "Striden handlade om mycket mer än ost"
Erik Westholm (Rural Development)
- 11 NOV **Landets Fria Tidning**, Naturen — en relaxavdelning eller ett vaccin?
Eva Sandberg (SLU Swedish Centre for Nature Interpretation)
- 12 NOV **ETC**, Är klimataktivisterna verkligen problemet?
Josefin Wangel (Landscape Architecture)
- 23 NOV **Extrakt**, Undersöker kraften i nya gröna vågen
Emil Sandström (Rural Development)
- 25 NOV **Mistra**, Eva Friman värnar om det kritiska tänkandet
Anke Fischer (Environmental Communication)
- 26 NOV **Falu Kuriren**, Ett svagt Dalarna gör att skattepengarna regnar över storstäderna
Erik Westholm (Rural Development)
- 27 NOV **Falu Kuriren**, "Walkover" till storstäderna
Erik Westholm (Rural Development)
- 28 NOV **Nordvästra Skånes Tidningar**¹⁷, Livsmedelsforskare: Vi borde redan gjort det här
Daniel Bergquist (Landscape Architecture)
- 29 NOV **Mora Tidning**, Svagt Dalarna förlorar fajten. Tänk om vi haft en Region Svealand
Erik Westholm (Rural Development)
- 01 DEC **Aktuell Hållbarhet**, Ovisst efter toppmöte om biodiversitet
Torbjörn Ebenhard (SLU Swedish Biodiversity Centre)
- 01 DEC **Jaktjournalen**, Stor klädaktör nobbade jägare
Erica von Essen & Lara Tickle (Environmental Communication)
- 01 DEC **Plan Vivo Foundation**, Co-designing a Community Carbon Project
Klara Fischer (Rural Development)
- 06 DEC **Spotlight Nepal**, Agriculture Or Migration: A National Priority Conundrum
Stephanie Leder (Rural Development)
- 08 DEC **Skogen Den obundna skogstidningen**, Jämställdhetsansvar halkar runt på SLU
Stina Powell & Ann Grubbström (Environmental Communication)
- 14 DEC¹⁸ **Lysekilsposten**, Hur finansierar vi en hållbar framtid i Bohuslän?
Thomas Norrby (Rural Development)
- 17 DEC **ETC**, Vi behöver prata om energirättvisa
Josefin Wangel (Landscape Architecture)
- 21 DEC **Aftonbladet Debatt**, Sex myter som styr dagens klimatpolitik. 20 forskare: Politikerna måste våga fatta de jobbiga besluten
Karin Gerhardt (SLU Swedish Biodiversity Centre) & *Flora Hajdu* (Rural Development)
- 21 DEC **ETC**, Lite tejp räcker inte när huset kollapsar
Flora Hajdu (Rural Development)
- 22 DEC **Aftonbladet**, När dystopierna kom ikapp kulturen
Erik Westholm (Rural Development)
- 23 DEC **Västerviks Tidningen**¹⁹, Forskare ser tecken på en ny grön våg
Emil Sandström (Rural Development)
- 24 DEC **The Print**, Can mass tree plantations help reduce climate change?
Harry Fischer (Rural Development)
- 27 DEC **Skogen**, Citatet
Ann Grubbström & Stina Powell (Environmental Communication)

- 1 Also in: Nya Wermlands-Tidningen, Mariefreds Tidning med Måsen Nykvarn och Måsen Strängnäs, Värmlands Folkblad, Land Skogsbruk, Land Lantbruk.
- 2 Also in: Smålandsposten, Borås Tidning, Sydöstran, Barometern, Ystads Allehanda.
- 3 Also on 05 FEB.
- 3 Also on 06 FEB.
- 5 Also in: Gefle Dagblad, Hudiksvalls Tidning, Ljusnan, Ljusdals-Posten.
- 6 Also in: Aftonbladet, MSN, Skånska Dagbladet, Norra Skåne, Helsingborgs Dagblad, Dagens Industri, Sydöstran, Sydsvenskan, Karlskoga Tidning-Kuriren, Borås Tidning, Blekinge Läns Tidning, Kristianstadsbladet, Smålandsposten, Ystads Allehanda, Oskarshamns-Tidningen, Barometern, Norran.
- 7 Also in: Dagens Nyheter.
- 8 Also in: TTELA, Hallands Nyheter, Bohuslänningen, Hallandsposten.
- 9 Also in: TT, MSN, Tidningen Syre, Västerbottens-Kuriren, Norran, Söderhamns-Kuriren, Örnsköldsviks Allehanda, Hudiksvalls Tidning, Smålandsposten, Barometern, Borås Tidning, Blekinge Läns Tidning, Ystads Allehanda, Helsingborgs Dagblad, Kristianstadsbladet, Sydsvenskan, Sydöstran, Skånska Dagbladet, Norra Skåne
- 10 Also in: Barometern
- 11 Also in: Svenska Dagbladet, Aftonbladet, Karlskoga Tidning-Kuriren, Värnamo Nyheter, Göteborgsposten, Borås Tidning, Sydsvenskan, Skånska Dagbladet, Norran, Barometern, Kristianstadsbladet, Helsingborgs Dagblad, Blekinge Läns Tidning, Norra Skåne, Ystads Allehanda, Hallands Nyheter, Alingsås Tidning, Smålandsposten, MSN, Västerbottens-Kuriren, TTELA, Bohuslänningen, Strömstads Tidning / Norra Bohuslän, Hufvudstadsbladet
- 12 Also in: Expertsvar, Naturvårdsverket, Skogen Den obundna skogstidningen.
- 13 Also in: Västerbottningen, Nordsverige, Lokaltidningen.
- 14 Also in: Sydsvenskan, Nordvästra Skånes Tidningar, Helsingborgs Dagblad.
- 15 Also on 16 OCT.
- 16 Also in: Mora Tidning.
- 17 Also in: Helsingborgs Dagblad, Sydsvenskan, Landskrona Posten.
- 18 Also on 15 DEC.
- 19 Also in: Vimmerby Tidning.

Representation within SLU 2021

Deputy Vice-Chancellor: Karin Holmgren

SLU Web Committee: Petter Åkerblom

NJ Faculty Board: Johanna Bergman Lodin (first deputy member)

NJ Faculty Programme Board of Education at Bachelor's and Master's level: Lotten Westberg & Kristina Marquardt (deputy member)

NJ Faculty Docent Board: Patrick Svensson (deputy member)

NJ Faculty Academic Appointment Board: Seema Arora-Jonsson & Cecilia Waldenström

NJ Faculty Board of Doctoral Education: Jesper Larsson

NJ Faculty Election Committee: Klara Fischer

NJ Faculty Committee for Global Development: Linley Chiwona-Karlton

NJ Faculty Committee for Equal Opportunities: Patrik Oskarsson & Marina Queiroz

NJ Faculty Vice Dean for Equal Opportunities (Working Committee and Faculty Board): Marina Queiroz

NJ Faculty Representative in the Board of Future Animals, Nature and Health: Eva Sandberg

LTV Faculty Board: Maria Wisselgren (first deputy member)

LTV Faculty Election Committee: Ulla Myhr

LTV Faculty Board of Education: Ulla Myhr

Member of the Nomination Board for August T. Larsson Guest Researcher Programme at the NJ Faculty: Hanna Ljunggren Bergeå

Vice-Chancellor's Council of researchers (For): Patrick Svensson

Movium Management Council: Lars Johansson

Financial performance 2021

		2013	2014	2015	2016	2017	2018	2019	2020	2021
Total turnover	MSEK	86	98	110	127	132	144	144	165	173
Whereof government funding	MSEK	56	59	73	77	89	94	75	94	100
Staff										
Full-time equivalent		78	82	89	92	94	102	112	130	131
Total number		112	107	125	120	128	137	148	171	169
Full-time equivalent students										
Basic and advanced level		403	409	439	431	444	463	466	526	548
Annual performance equivalent		334	406	414	397	389	451	431	491	482
Basic and advanced level										
Active doctoral students										
		28	28	42	35	30	32	33	29	24
Dissertations		5	2	3	11	6	3	3	4	3
Doctoral degrees						3	4	2	3	6
Licentiate degrees						2	-	1	-	-
Publications										
Independent and degree projects		106	117	123	134	134	138	128	153	140
Doctoral and licentiate theses		5	2	3	12	6	3	4	4	3
Peer-reviewed research articles		21	16	35	60	74	63	55	56	82
Peer-reviewed book chapters		6	3	10	34	16	24	14	14	14
Books		1	-	2	6	7	4	-	2	1
Reports		2	4	5	9	14	9	15	14	13

LARGEST FUNDING ORGANISATIONS

Swedish Research Council for Sustainable Development (Formas)

Swedish International Development Cooperation Agency (Sida)

Swedish Research Council (Vetenskapsrådet)



RESPONSIBLE PUBLISHER: LARS JOHANSSON

© DEPARTMENT OF URBAN AND RURAL DEVELOPMENT, 2022

SWEDISH UNIVERSITY OF AGRICULTURAL SCIENCES SLU

DEPARTMENT OF URBAN AND RURAL DEVELOPMENT

POSTAL ADDRESS: P.O. BOX 7012, 750 07 UPPSALA SWEDEN

VISITING ADDRESS: ULLS VÄG 27

DELIVERY ADDRESS: ULLS GRÄND 1

PHONE: +4618671000

WWW.SLU.SE/SOL